



UNIVERSITÄTS-
BIBLIOTHEK
PADERBORN

Universitätsbibliothek Paderborn

Studierendenspiegel

Universität Paderborn

**Paderborn, 1980/95(1995); WS 1995/96(1995) - WS
1998/99(1998); WS 2001/02(2001)**

Die Gesamtzahlen (Entwicklung seit 1972)

urn:nbn:de:hbz:466:1-32528

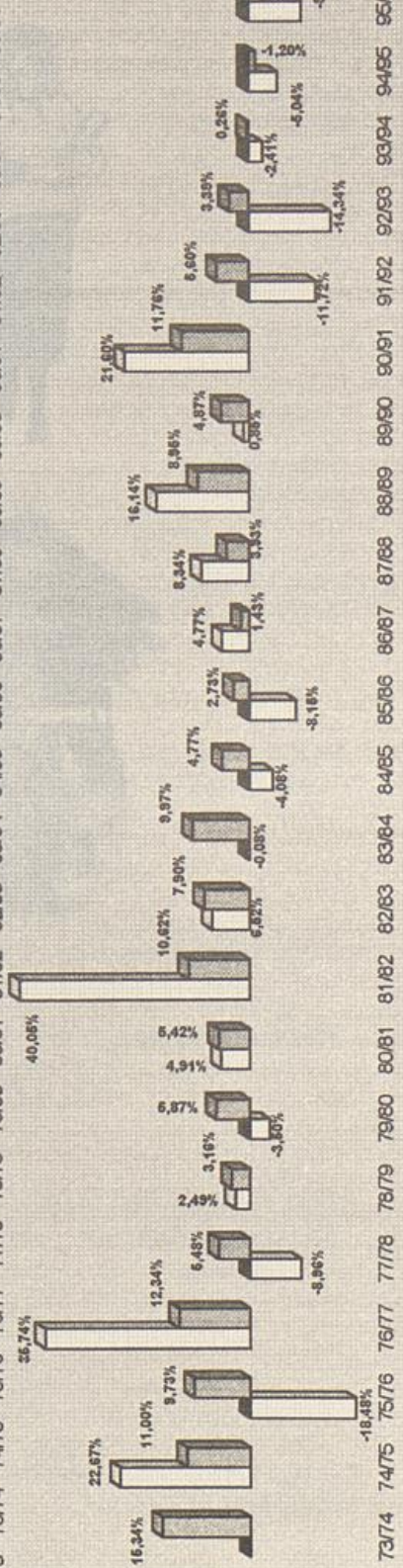
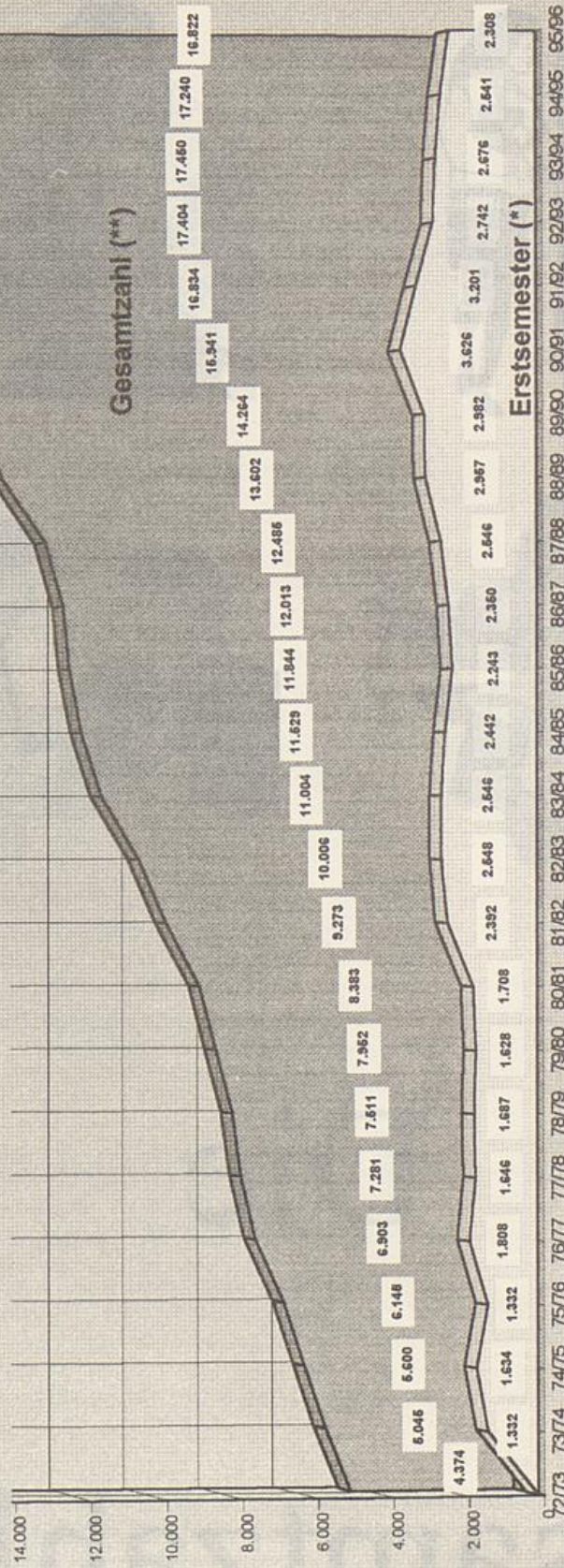


Die Gesamtzahlen

Universität - Gesamthochschule Paderborn

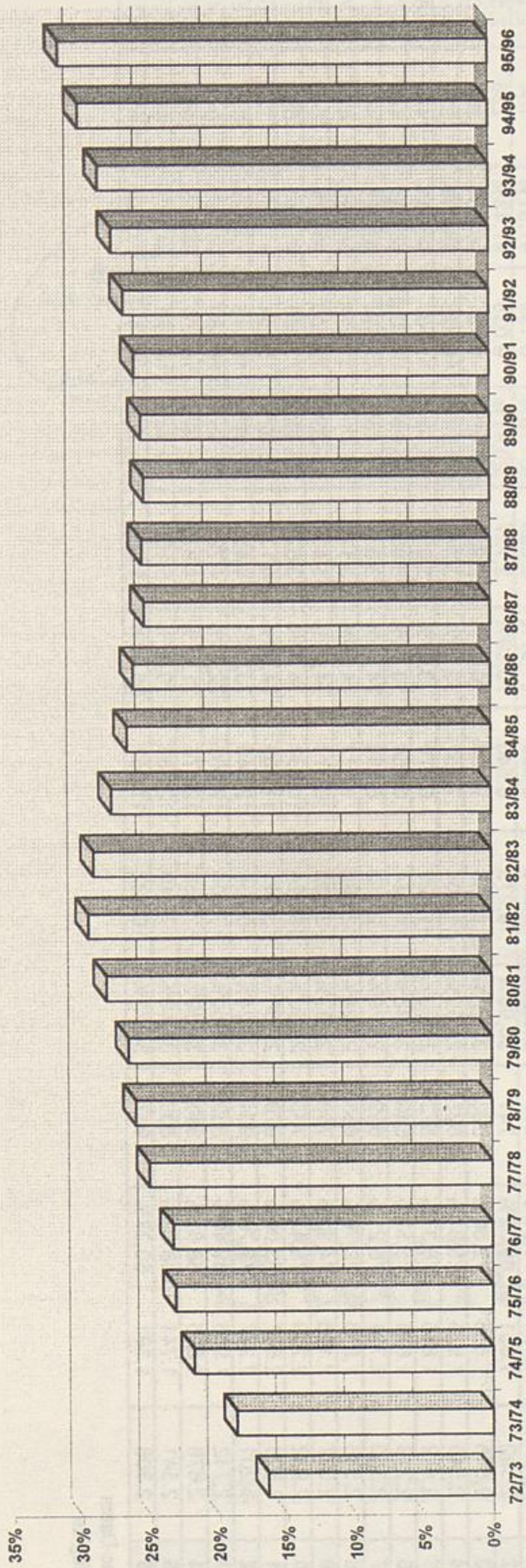
Entwicklung der Studierendenzahlen

Wintersemester 1972/73 - 1994/95

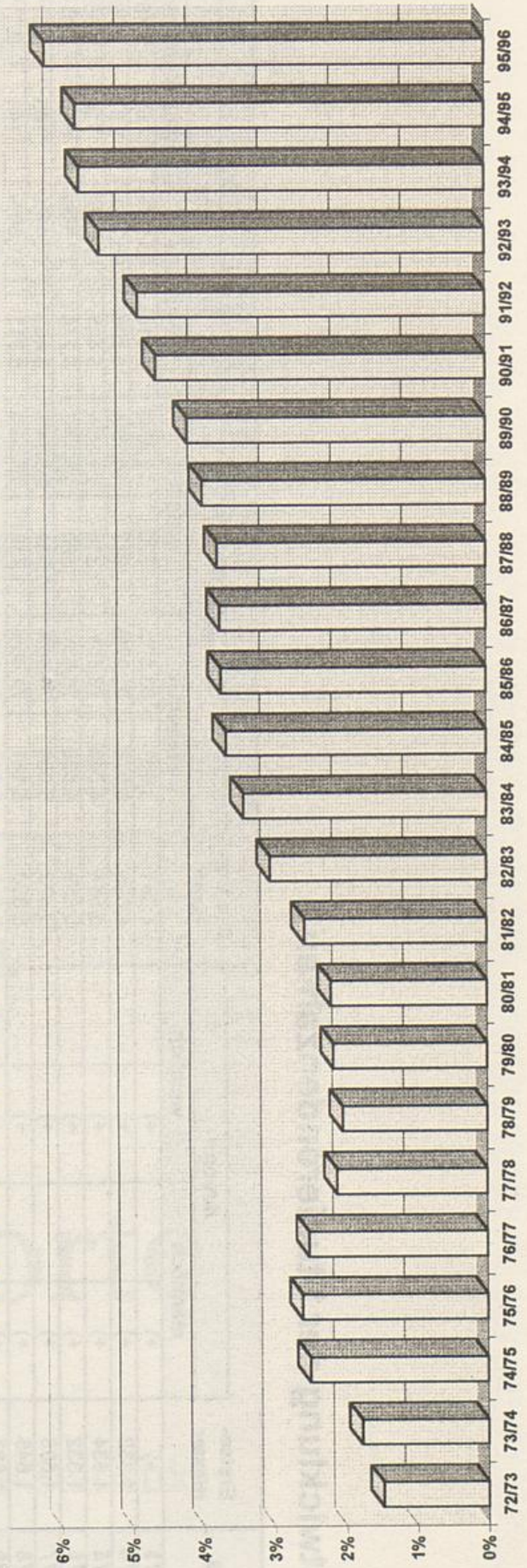


Prozentuale Veränderung im Vergleich zum Vorjahr
Gesamtzahl
Erstsemester

Anteil der Studentinnen an der Gesamtzahl



Anteil der ausländischen Studierenden an der Gesamtzahl



Entwicklung der Studierendenzahlen

WS	Erstsemester	Gesamtzahl				davon:				davon:			
		männlich		weiblich		männlich		weiblich		Deutsche		Ausländer/innen	
		+	%	+	%	+	%	+	%	+	%	+	%
72/73	+			+		3.661	83,57%	720	16,43%	4.316	98,52%	65	1,48%
73/74	1.332	+		+		3.978	81,27%	917	18,73%	4.808	98,22%	87	1,78%
74/75	1.634	+		+		4.348	78,15%	1.216	21,85%	5.425	97,50%	139	2,50%
75/76	1.332	+		+		4.509	76,83%	1.360	23,17%	5.716	97,39%	153	2,61%
76/77	1.808	+		+		5.039	76,66%	1.534	23,34%	6.408	97,49%	165	2,51%
77/78	1.646	+		+		5.141	74,96%	1.717	25,04%	6.713	97,89%	145	2,11%
78/79	1.687	+		+		5.339	74,00%	1.876	26,00%	7.068	97,96%	147	2,04%
79/80	1.628	+		+		5.604	73,50%	2.021	26,50%	7.460	97,84%	165	2,16%
80/81	1.708	1.199	70,20%	509	29,80%	6.025	71,87%	2.358	28,13%	8.199	97,81%	184	2,19%
81/82	2.392	1.651	69,02%	741	30,98%	6.546	70,59%	2.727	29,41%	9.035	97,43%	238	2,57%
82/83	2.548	1.855	72,80%	693	27,20%	7.103	70,99%	2.903	29,01%	9.701	96,95%	305	3,05%
83/84	2.546	1.925	75,61%	621	24,39%	7.957	72,31%	3.047	27,69%	10.628	96,58%	376	3,42%
84/85	2.442	1.865	76,37%	577	23,63%	8.470	73,47%	3.059	26,53%	11.107	96,34%	422	3,66%
85/86	2.243	1.694	75,52%	549	24,48%	8.758	73,94%	3.086	26,06%	11.403	96,28%	441	3,72%
86/87	2.350	1.791	76,21%	559	23,79%	8.980	74,75%	3.033	25,25%	11.564	96,26%	449	3,74%
87/88	2.546	1.878	73,76%	668	26,24%	9.313	74,59%	3.172	25,41%	12.014	96,23%	471	3,77%
88/89	2.957	2.198	74,33%	759	25,67%	10.170	74,77%	3.432	25,23%	13.060	96,02%	542	3,98%
89/90	2.982	2.249	75,42%	733	24,58%	10.636	74,57%	3.628	25,43%	13.666	95,81%	598	4,19%
90/91	3.626	2.647	73,00%	979	27,00%	11.809	74,08%	4.132	25,92%	15.204	95,38%	737	4,62%
91/92	3.201	2.297	71,76%	904	28,24%	12.346	73,34%	4.488	26,66%	16.013	95,12%	821	4,88%
92/93	2.742	1.903	69,40%	839	30,60%	12.609	72,45%	4.795	27,55%	16.463	94,59%	941	5,41%
93/94	2.676	1.836	68,61%	840	31,39%	12.478	71,51%	4.972	28,49%	16.457	94,31%	993	5,69%
94/95	2.541	1.741	68,52%	800	31,48%	12.080	70,07%	5.160	29,93%	16.251	94,26%	989	5,74%
95/96	2.308	1.391	60,27%	917	39,73%	11.553	68,68%	5.269	31,32%	15.784	93,83%	1.038	6,17%

+) keine Daten verfügbar