



UNIVERSITÄTS-
BIBLIOTHEK
PADERBORN

Universitätsbibliothek Paderborn

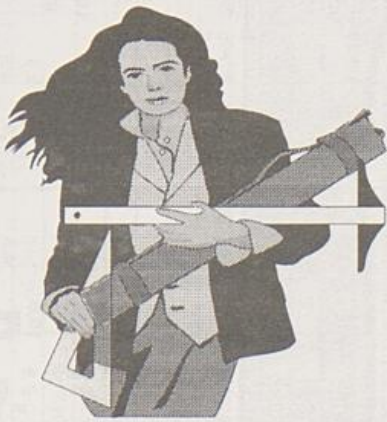
Studierenden- und Absolventenspiegel

Universität Paderborn

Paderborn, Wintersemester 1997/1998

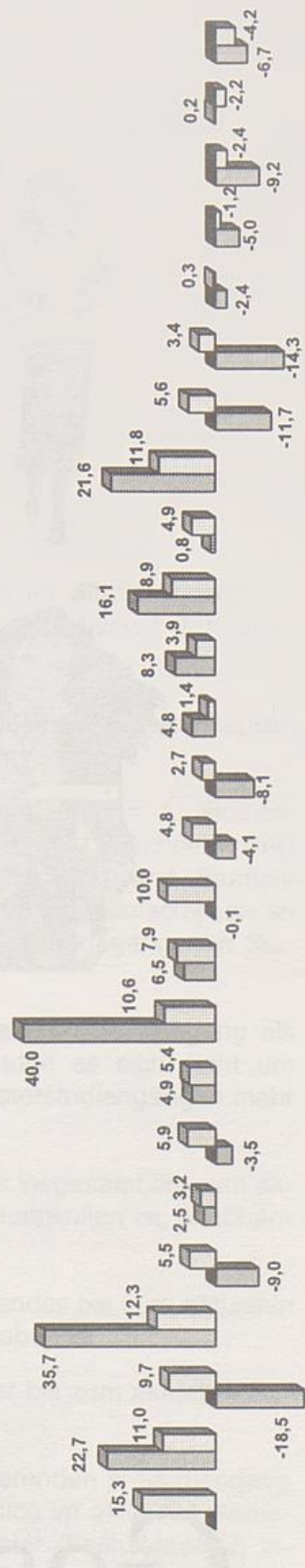
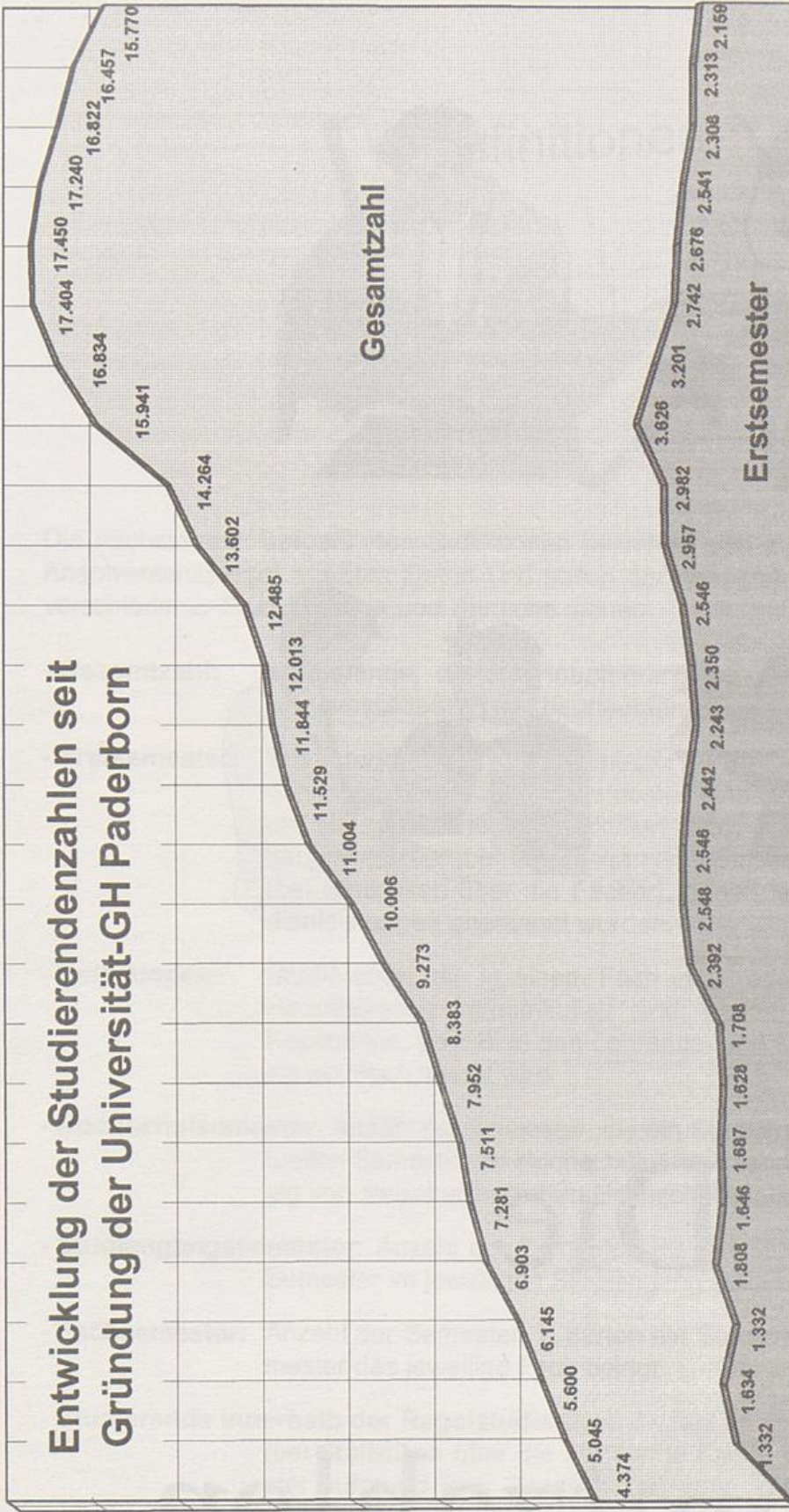
Die Gesamtzahlen (Entwicklung seit 1972)

urn:nbn:de:hbz:466:1-39528



Die Gesamtzahlen

Entwicklung der Studierendenzahlen seit Gründung der Universität-GH Paderborn



Veränderung
i. Vgl. zum
Vorjahr in %

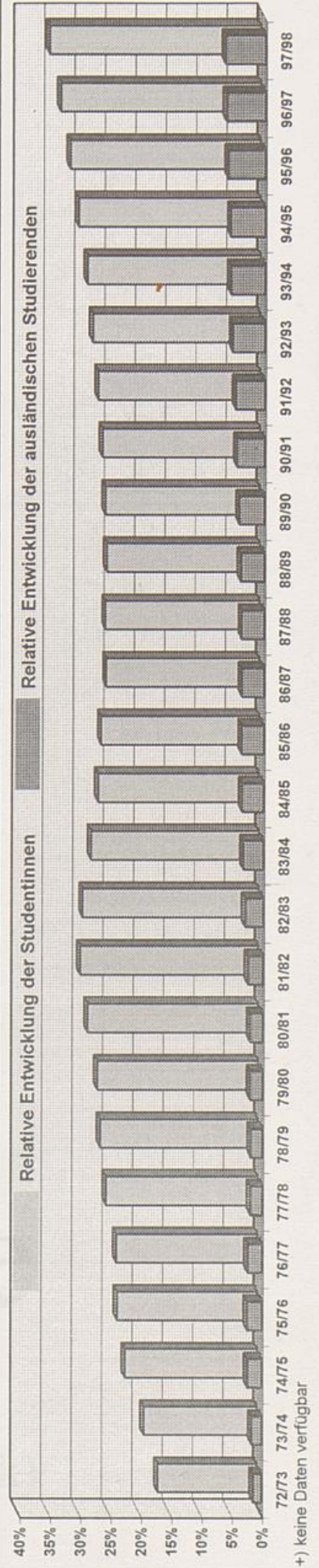
Gesamtzahl

Erstsemester

72/73 73/74 74/75 75/76 76/77 77/78 78/79 79/80 80/81 81/82 82/83 83/84 84/85 85/86 86/87 87/88 88/89 89/90 90/91 91/92 92/93 93/94 94/95 95/96 96/97 97/98

Entwicklung der Erstsemester und Studierendengesamtzahlen

WS	Erstsemester	davon:		Gesamtzahl	davon:		davon:				
		männlich	weiblich		männlich	weiblich	Deutsche	Ausländer			
72/73	+	+	+	4.381	83,57%	720	16,43%	4.316	98,52%	65	1,48%
73/74	1.332	+	+	4.895	81,27%	917	18,73%	4.808	98,22%	87	1,78%
74/75	1.634	+	+	5.564	78,15%	1.216	21,85%	5.425	97,50%	139	2,50%
75/76	1.332	+	+	5.869	76,83%	1.360	23,17%	5.716	97,39%	153	2,61%
76/77	1.808	+	+	6.573	76,66%	1.534	23,34%	6.408	97,49%	165	2,51%
77/78	1.646	+	+	6.858	74,96%	1.717	25,04%	6.713	97,89%	145	2,11%
78/79	1.687	+	+	7.215	74,00%	1.876	26,00%	7.068	97,96%	147	2,04%
79/80	1.628	+	+	7.625	73,50%	2.021	26,50%	7.460	97,84%	165	2,16%
80/81	1.708	1.199	509	8.383	70,20%	29,80%	26,50%	8.199	97,81%	184	2,19%
81/82	2.392	1.651	741	9.273	69,02%	30,98%	28,13%	9.035	97,43%	238	2,57%
82/83	2.548	1.855	693	10.006	72,80%	27,20%	29,41%	9.701	96,95%	305	3,05%
83/84	2.546	1.925	621	11.004	75,61%	24,39%	27,69%	10.628	96,58%	376	3,42%
84/85	2.442	1.865	577	11.529	76,37%	23,63%	26,53%	11.107	96,34%	422	3,66%
85/86	2.243	1.694	549	11.844	75,52%	24,48%	26,06%	11.403	96,28%	441	3,72%
86/87	2.350	1.791	559	12.013	76,21%	23,79%	25,25%	11.564	96,26%	449	3,74%
87/88	2.546	1.878	668	12.485	73,76%	26,24%	25,41%	12.014	96,23%	471	3,77%
88/89	2.957	2.198	759	13.602	74,33%	25,67%	25,23%	13.060	96,02%	542	3,98%
89/90	2.982	2.249	733	14.264	75,42%	24,58%	25,43%	13.666	95,81%	598	4,19%
90/91	3.626	2.647	979	15.941	73,00%	27,00%	25,92%	15.204	95,38%	737	4,62%
91/92	3.201	2.297	904	16.834	71,76%	28,24%	26,66%	16.013	95,12%	821	4,88%
92/93	2.742	1.903	839	17.404	69,40%	30,60%	27,55%	16.463	94,59%	941	5,41%
93/94	2.676	1.836	840	17.450	68,61%	31,39%	28,49%	16.457	94,31%	993	5,69%
94/95	2.541	1.741	800	17.240	68,52%	31,48%	29,93%	16.251	94,26%	989	5,74%
95/96	2.308	1.391	917	16.822	60,27%	39,73%	31,32%	15.784	93,83%	1.038	6,17%
96/97	2.313	1.408	905	16.457	60,87%	39,13%	32,90%	15.384	93,48%	1.073	6,52%
97/98	2.159	1.241	918	15.770	57,48%	42,52%	34,79%	14.720	93,34%	1.050	6,66%





Entwicklung der Ertragsstruktur der Bundesrepublik Deutschland