



Abbildungen

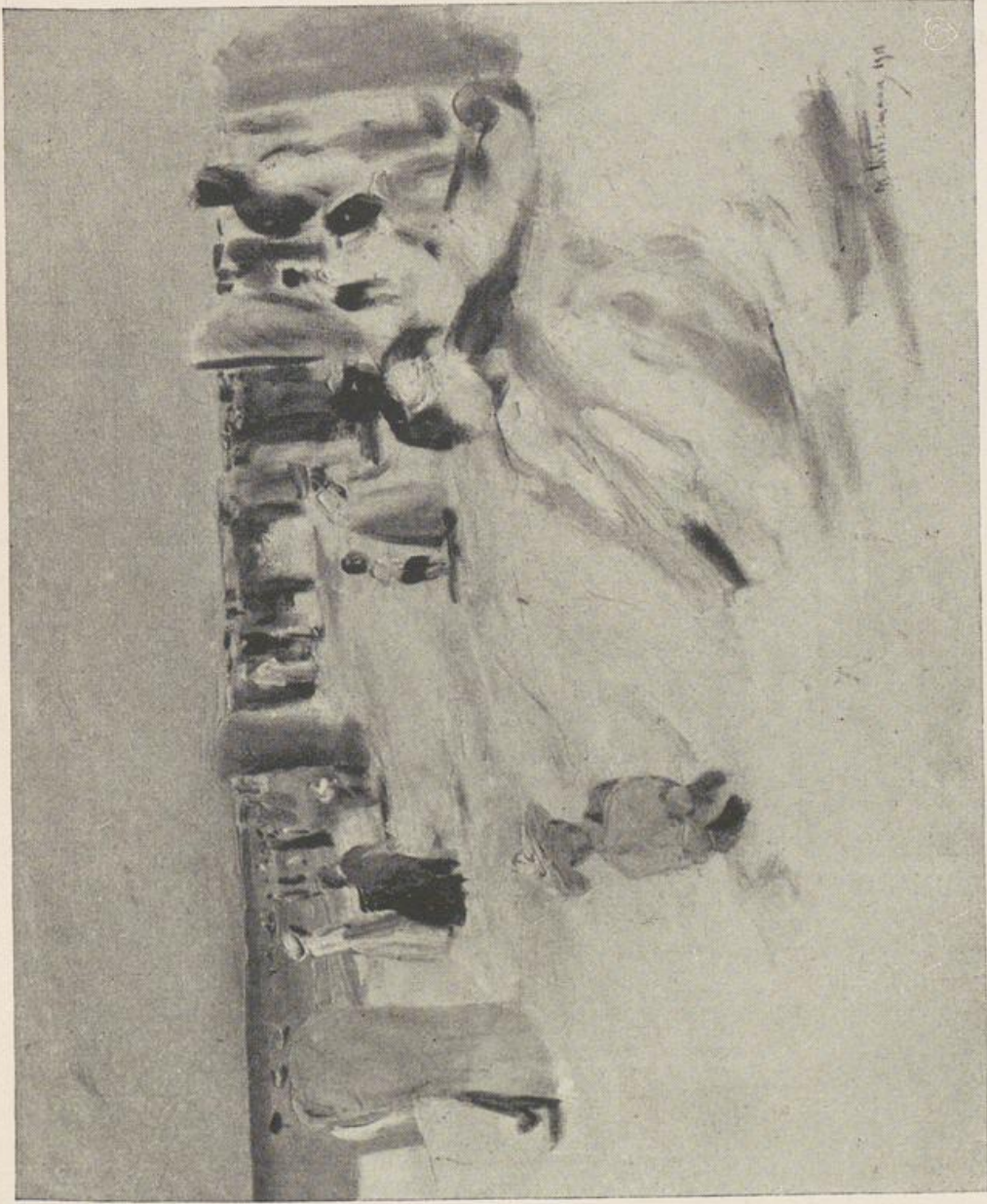


Nutzungsbedingungen

ABBILDUNGEN

AT DEUTSCHEN UNIVERSITÄT

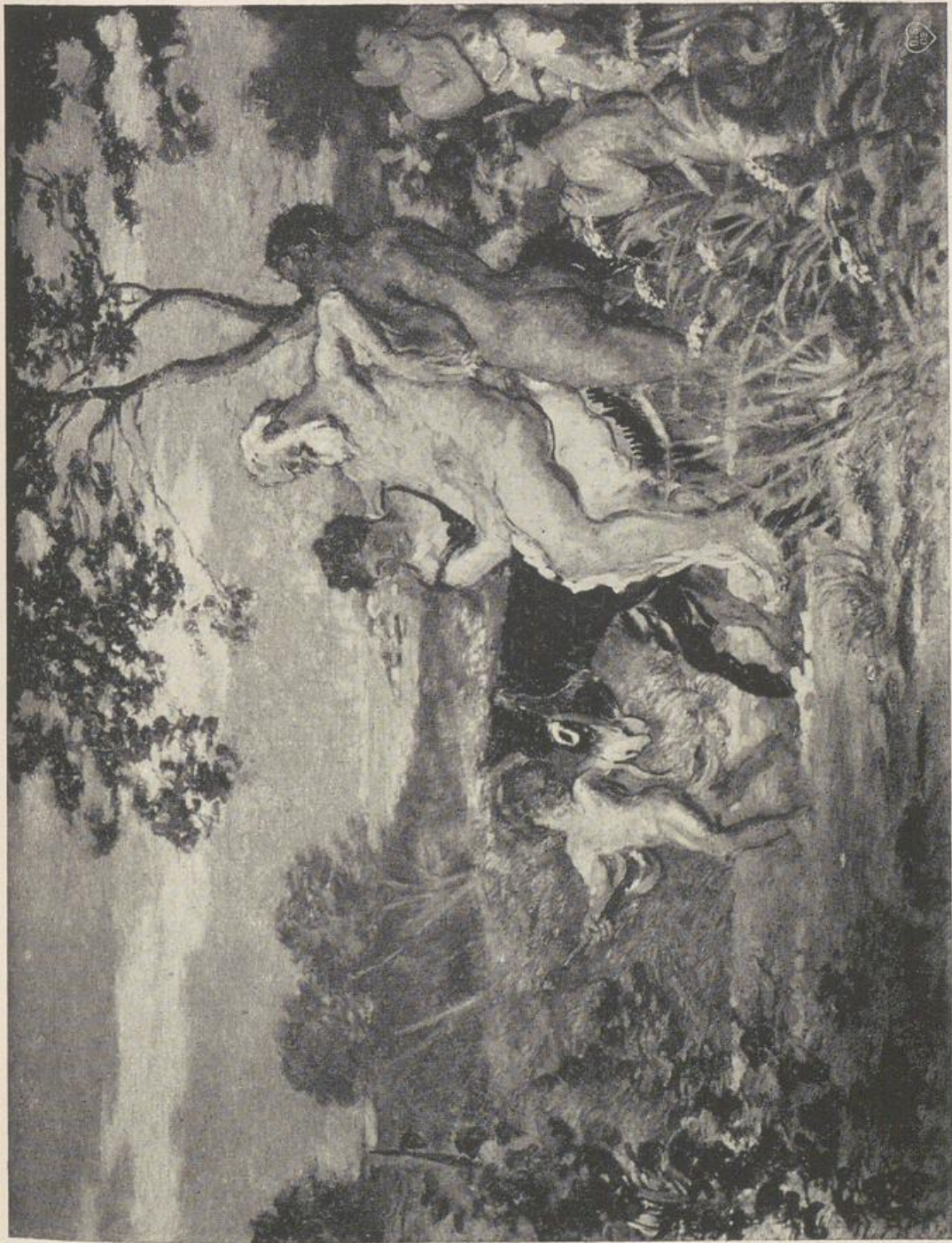
ABBILDUNGEN



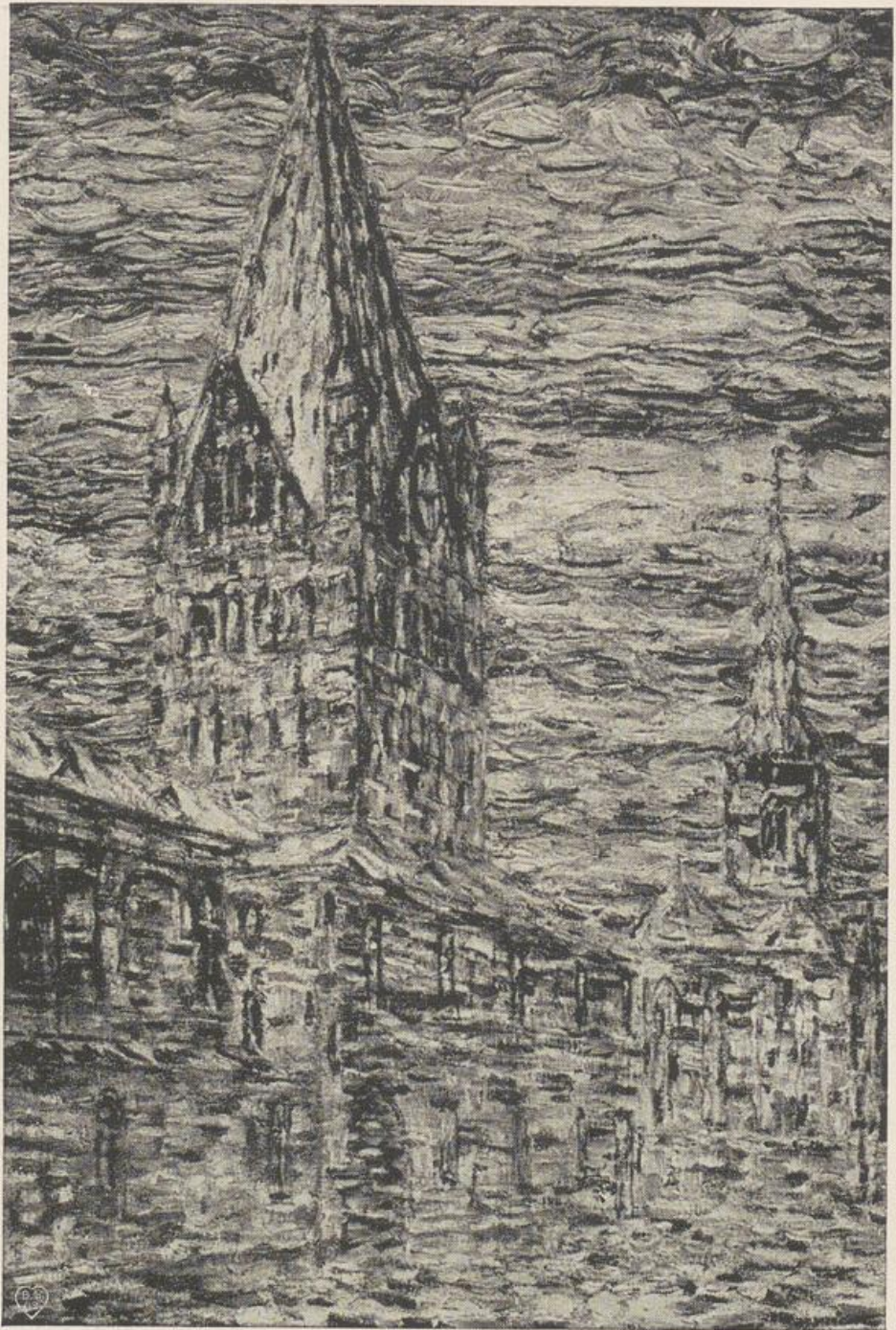
M. LIEBERMANN, STRANDBILD NOORDWIJK



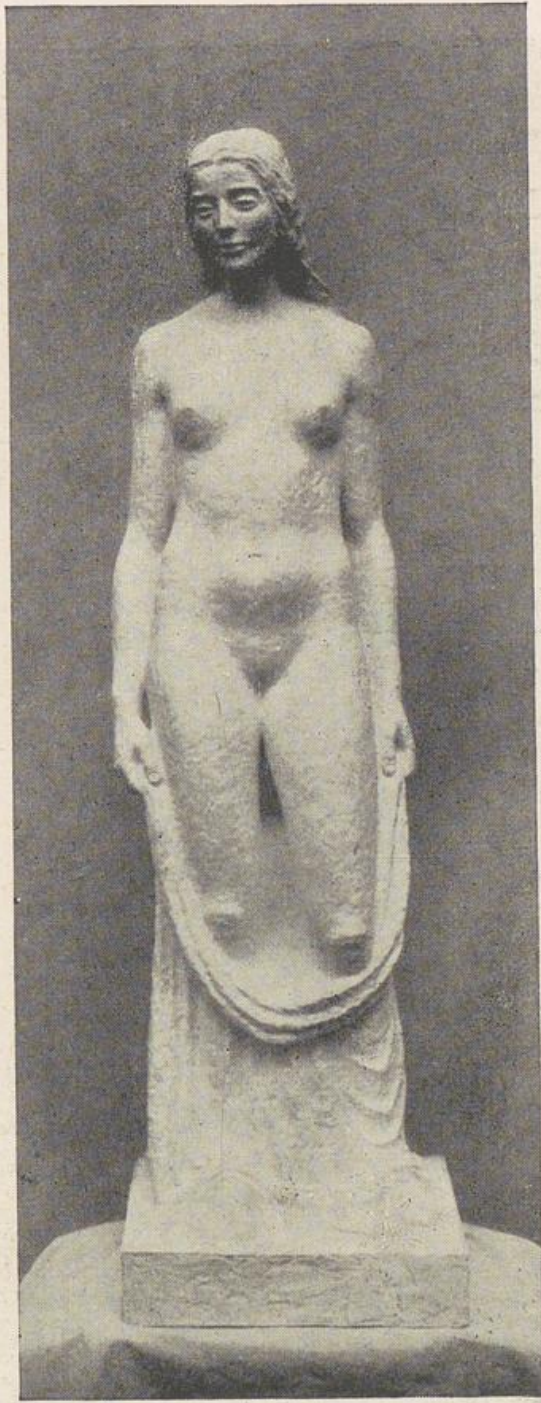
A. VON JAWLENSKY, PIVOINES



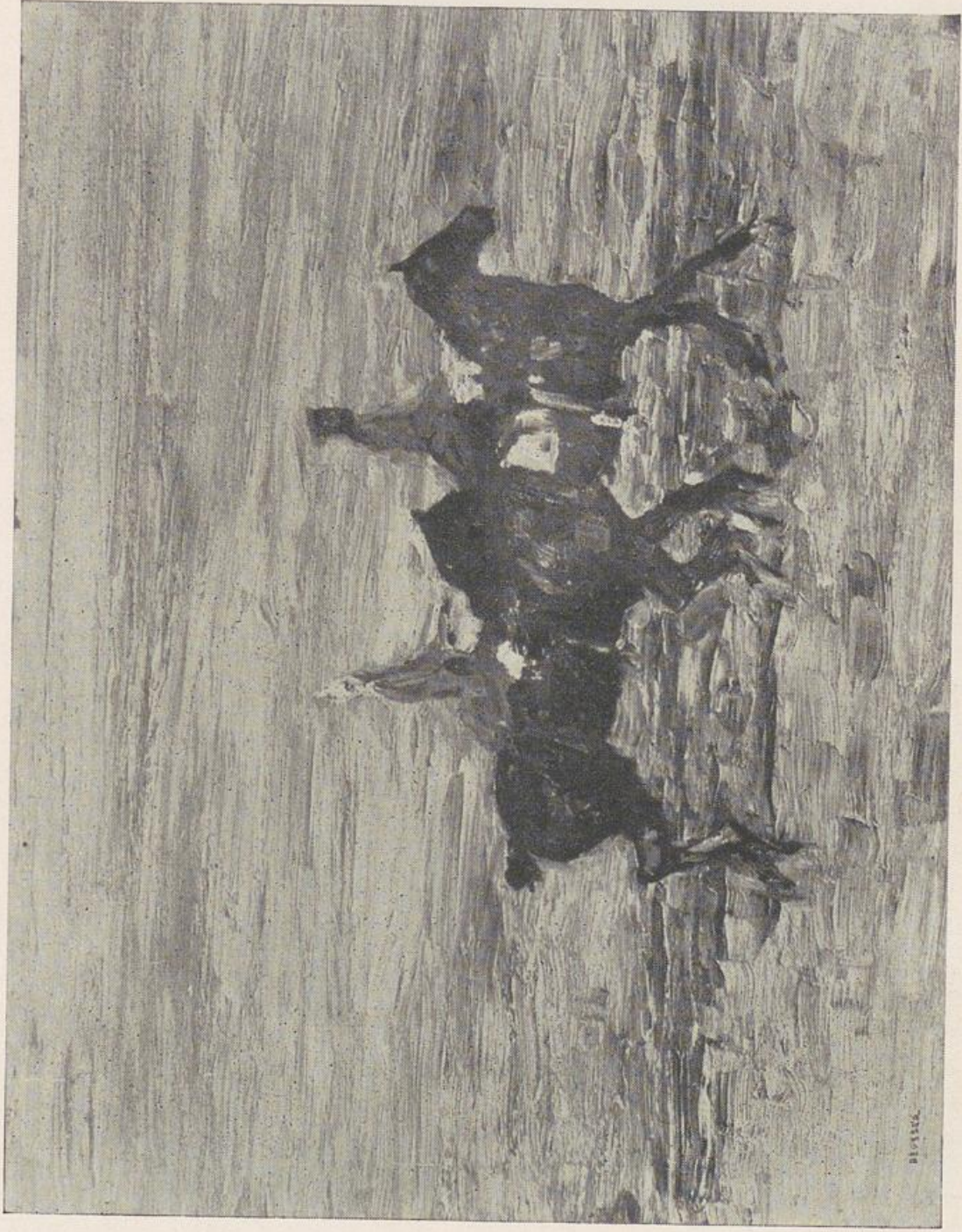
K. X. ROUSSEL, SILEN



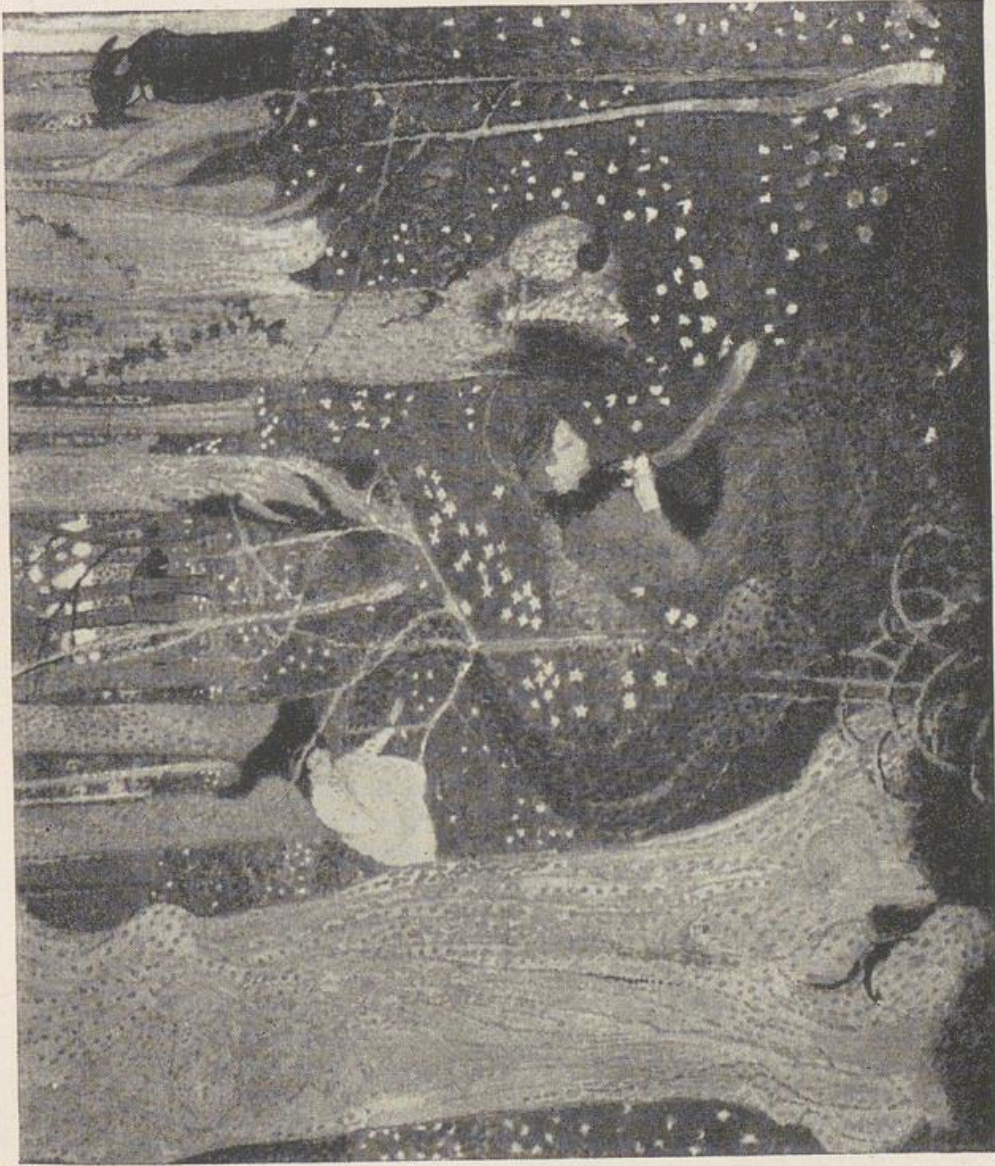
C. ROHLFS, PATROKLUSTURM UND PETERSKIRCHE



H. HALLER
STEHENDES MÄDCHEN



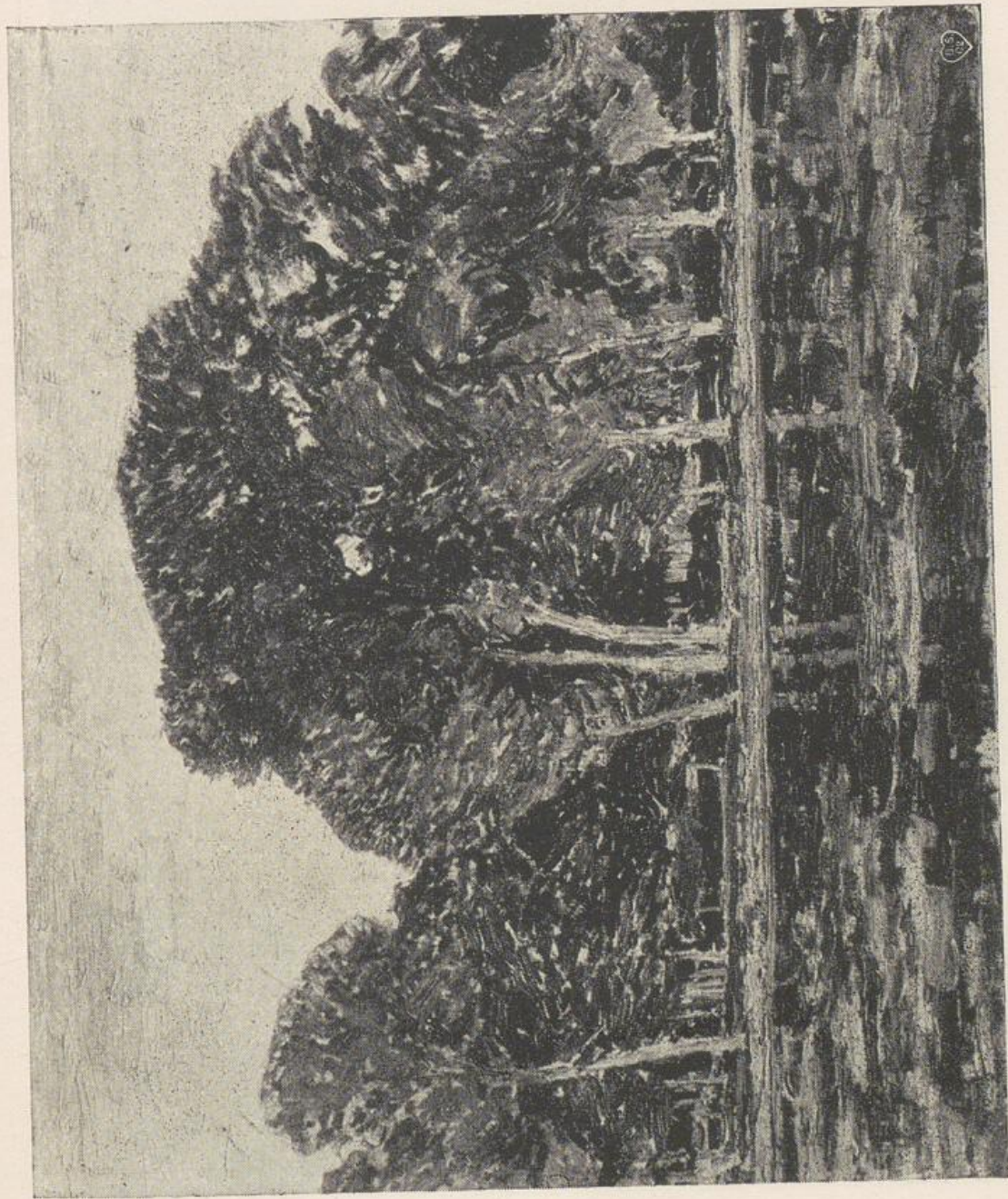
A. DEUßER, GENERAL UND ADJUTANT



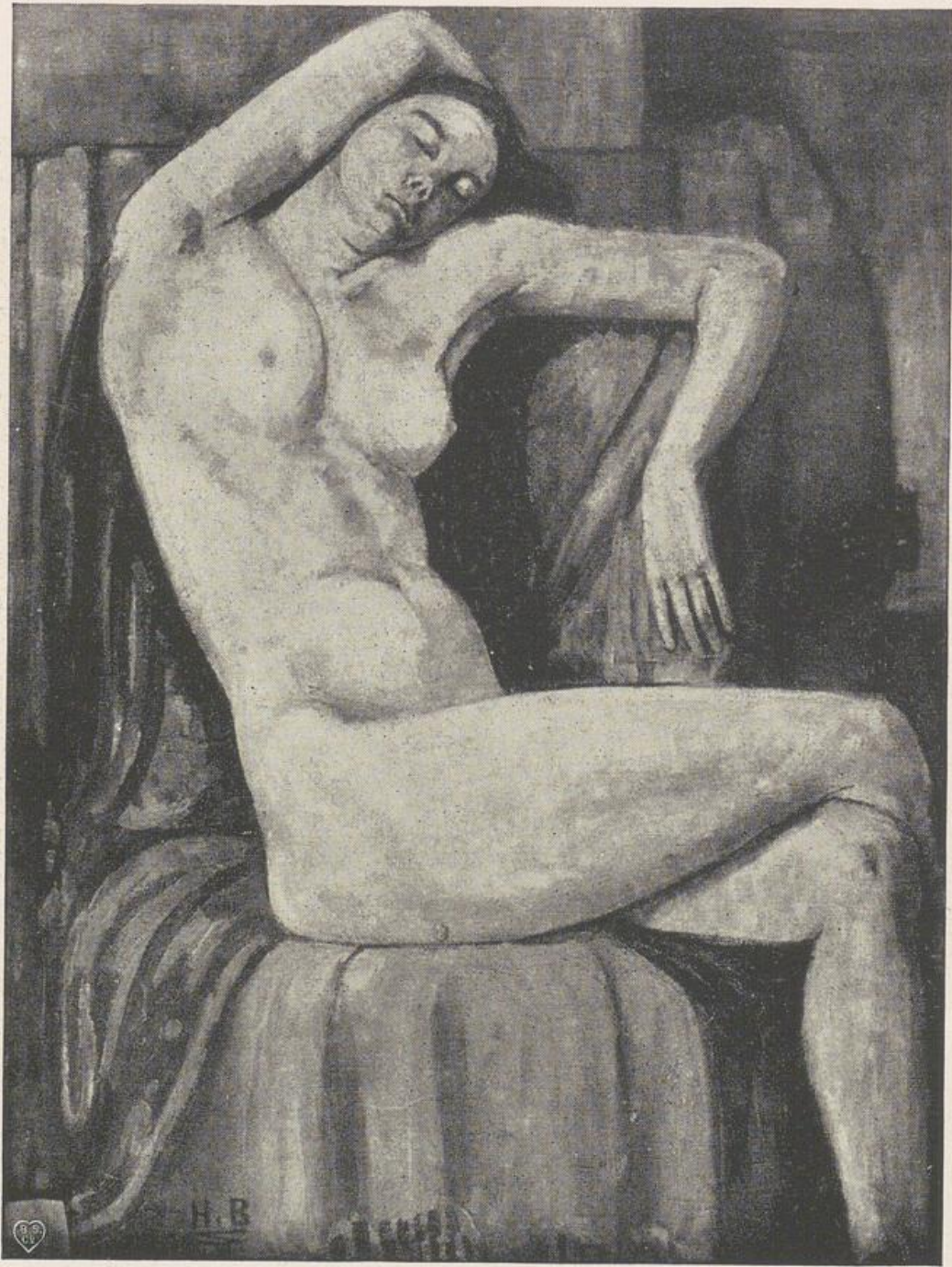
M. DENIS, APRIL



E. BARLACH, DER GELDZÄHLER



M. CLARENBACH, FLUßUFER



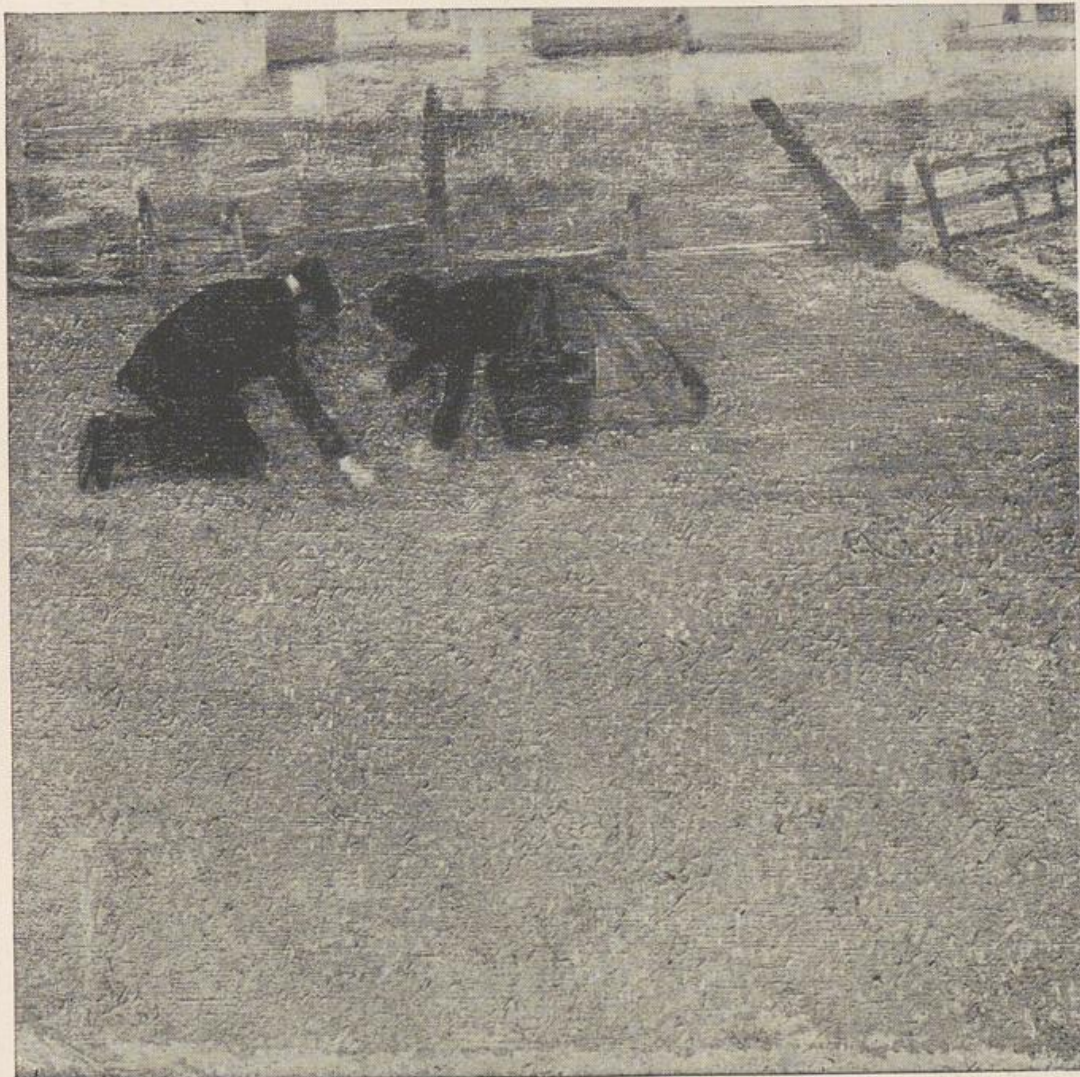
H. BRÜHLMANN, SITZENDE FRAU



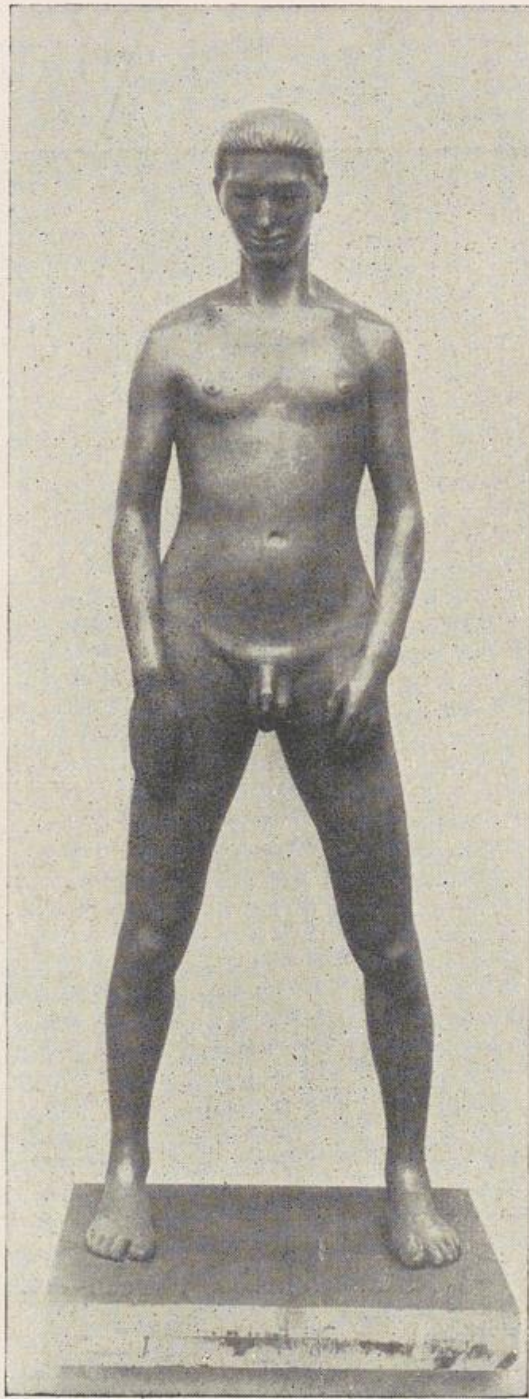
K. WIECK, DEKORATIONENTWURF



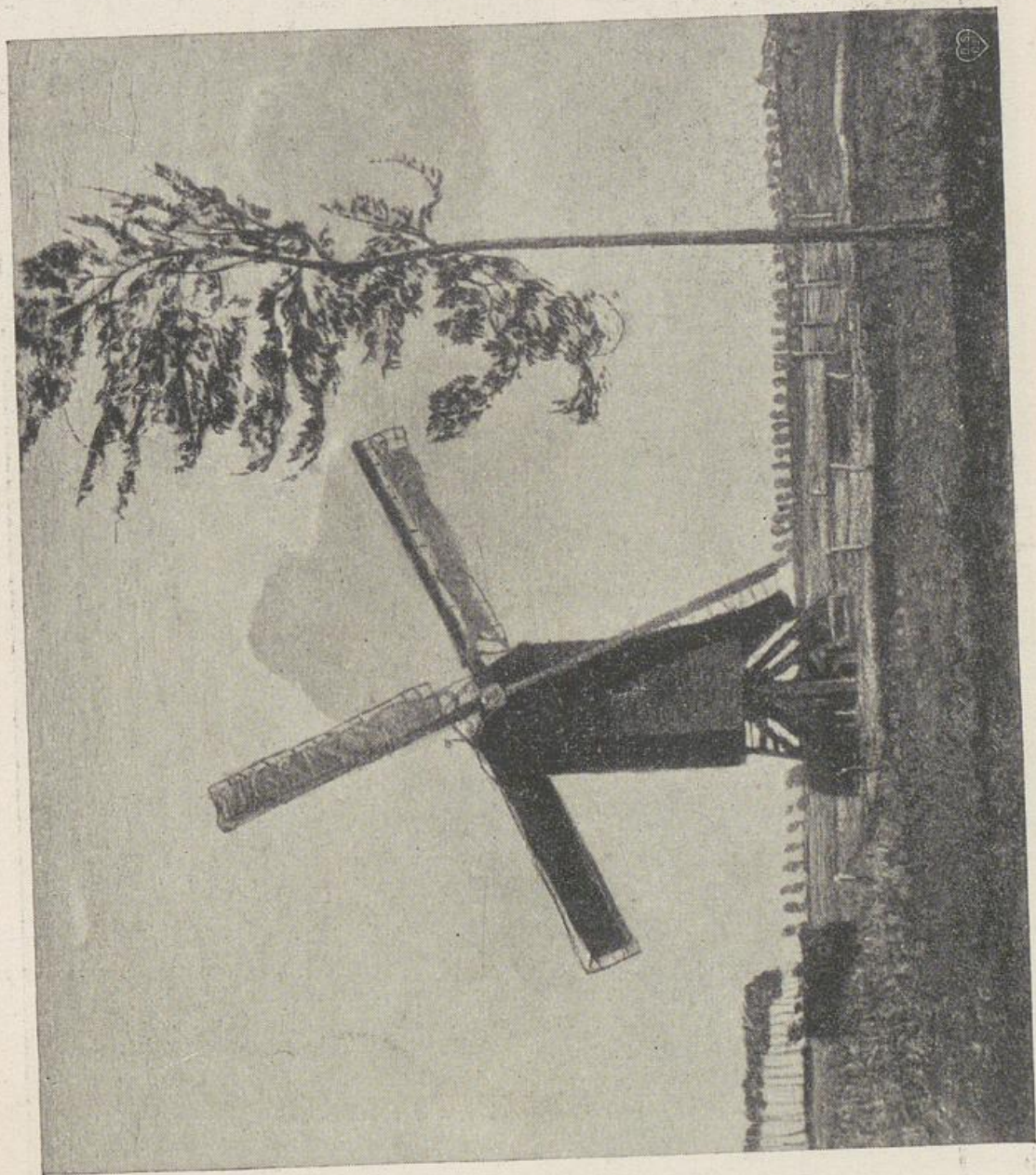
E. DEÜßER-ALBERT, HYAZINTHEN



W. SCHMURR, LANDLEUTE



P. OSSWALD, JÜNGLING



J. BRETZ, MÜHLE

*

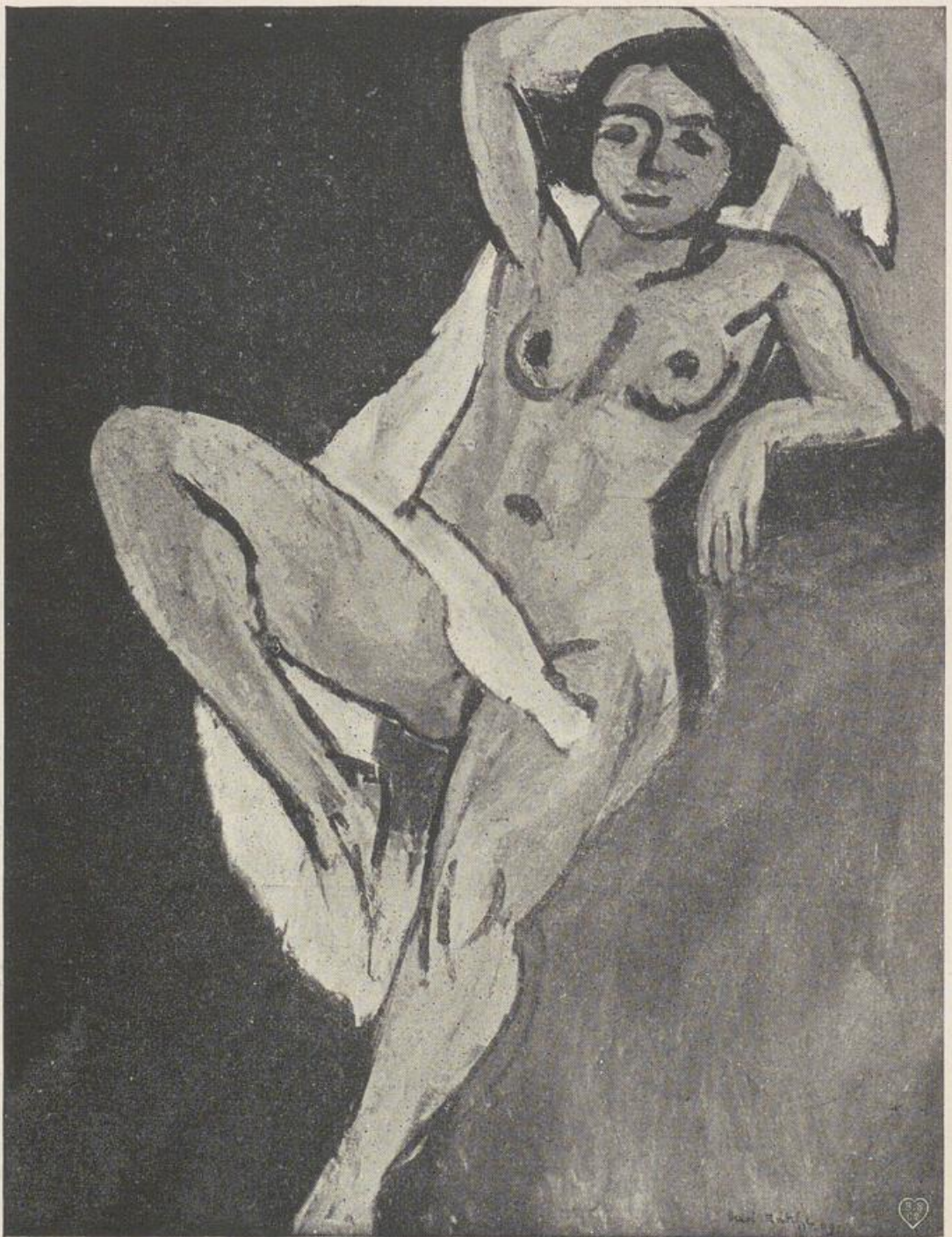


K. VAN DONGEN, FRAUENBILDNIS.



O. FRIESZ, LANDSCHAFT

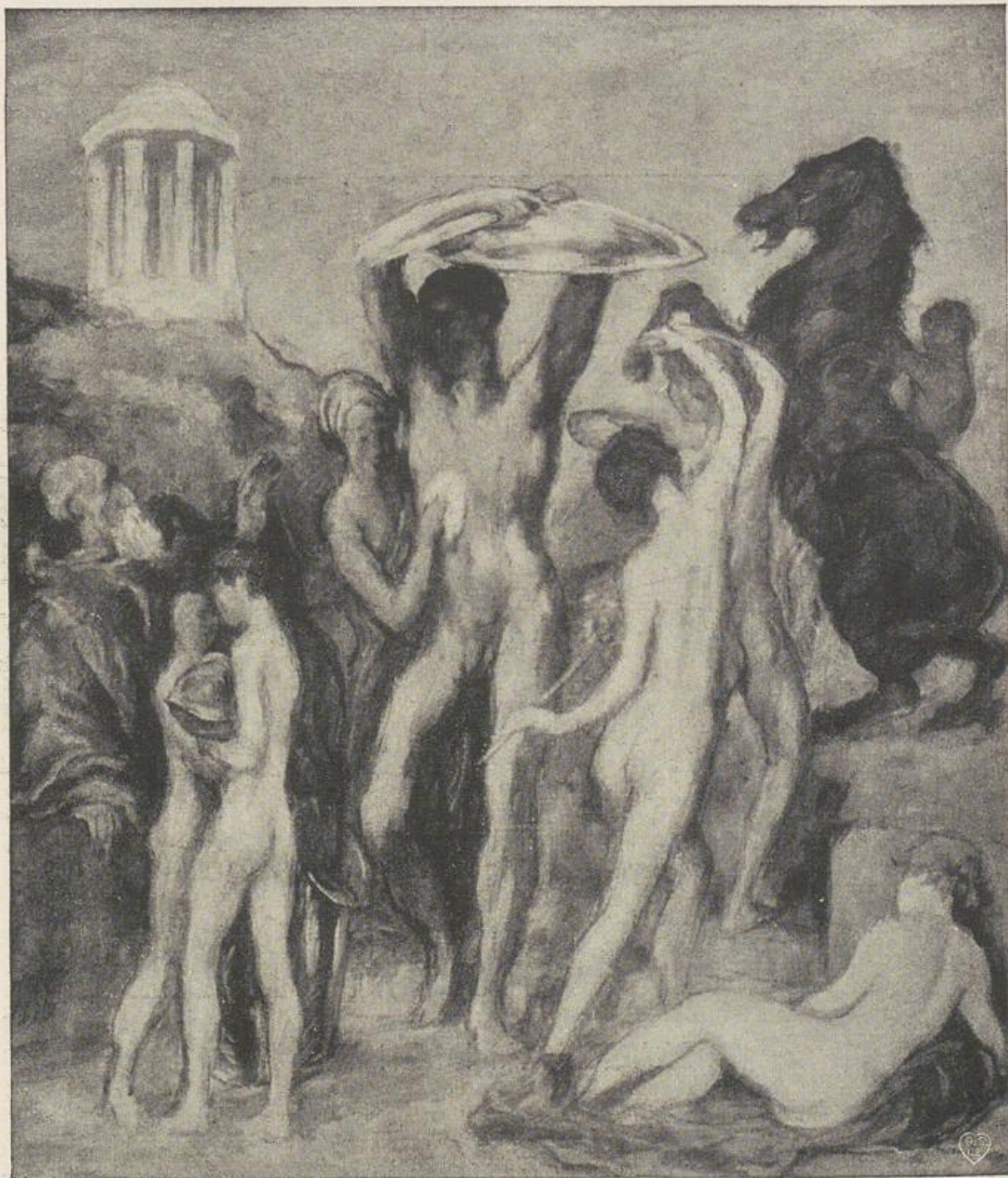
1911/12/13/14/15/16/17/18/19/20/21/22/23/24/25/26/27/28/29/30/31/32/33/34/35/36/37/38/39/40/41/42/43/44/45/46/47/48/49/50/51/52/53/54/55/56/57/58/59/60/61/62/63/64/65/66/67/68/69/70/71/72/73/74/75/76/77/78/79/80/81/82/83/84/85/86/87/88/89/90/91/92/93/94/95/96/97/98/99/100



HENRI-MATISSE, AKT



G. BRAQUE, LANDSCHAFT

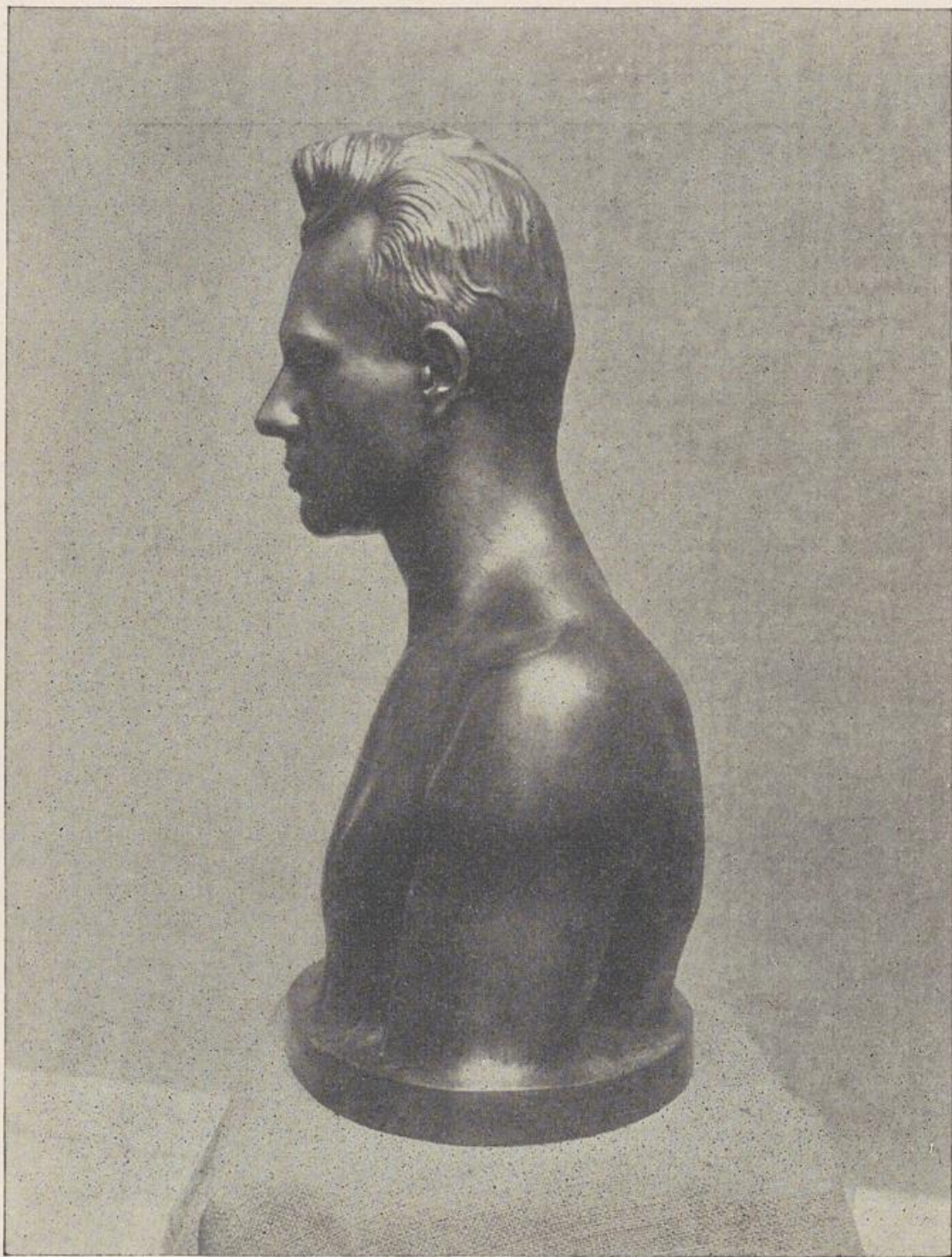


K. HOFER, ANTIKE SZENE

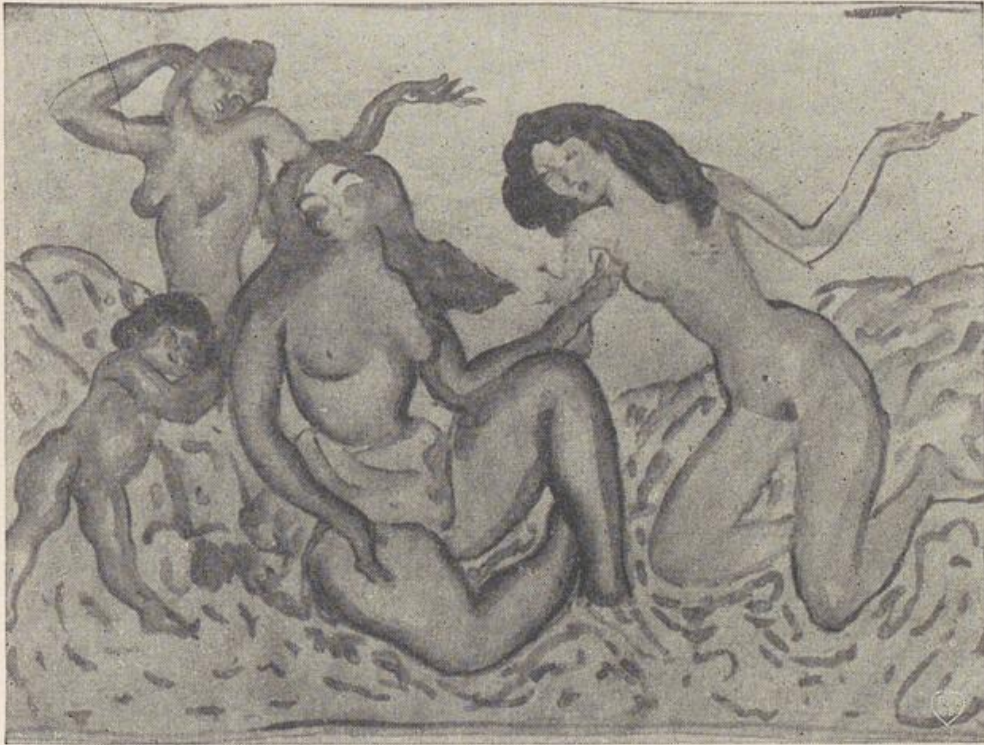


E. TE PEERDT, FELSHALDE

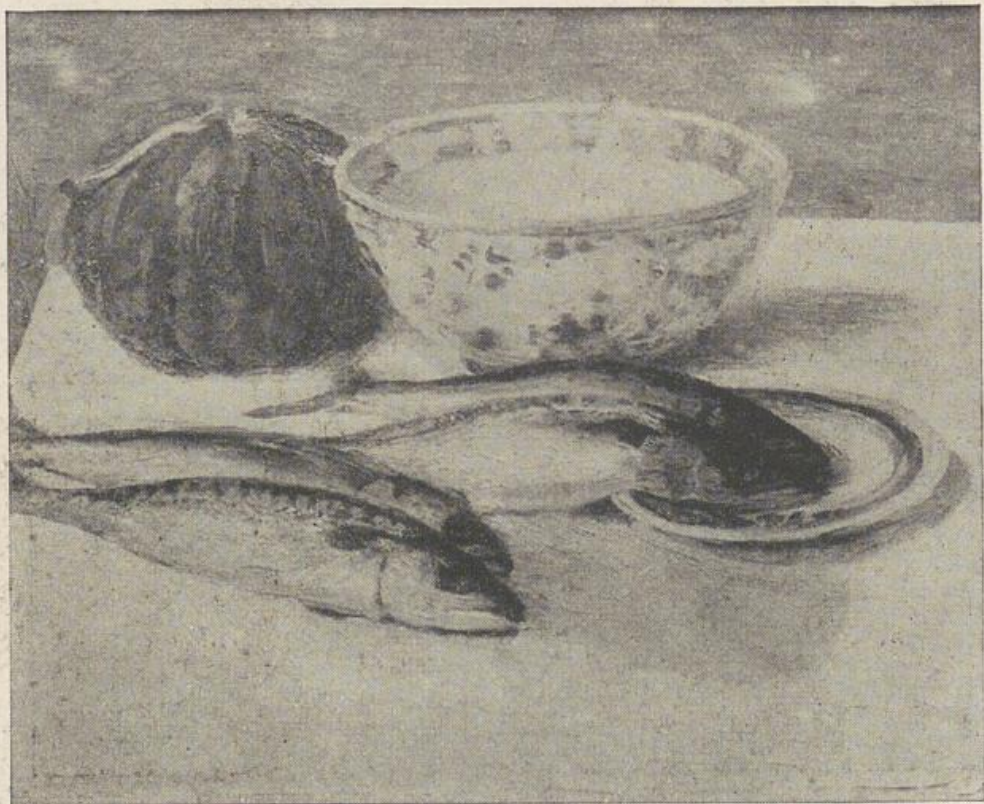
E. HOEK WILDE ZIJN



R. BOSSELT, PORTRAT DR. N.

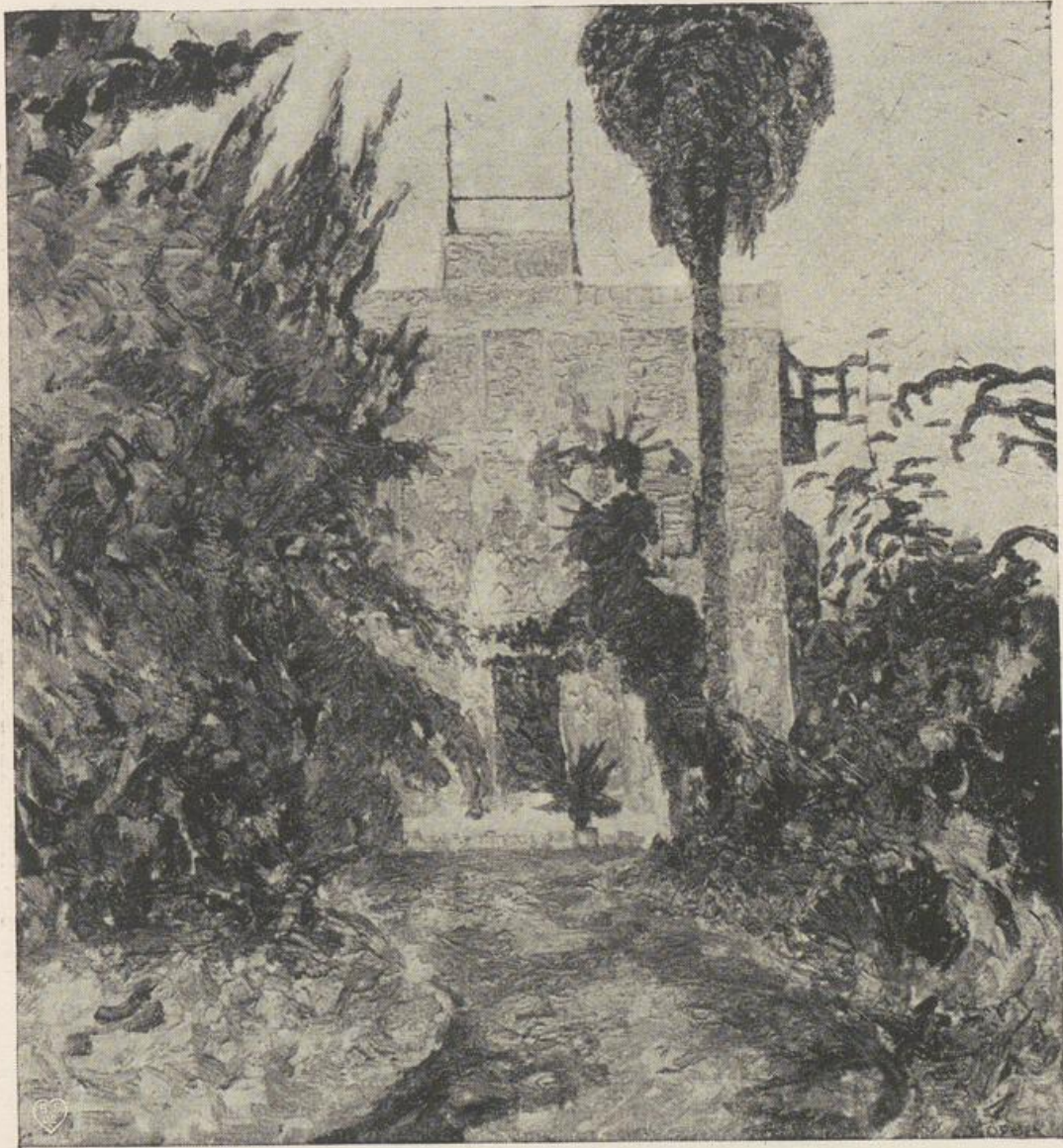


J. PASCIN, GEBURT DER VENUS

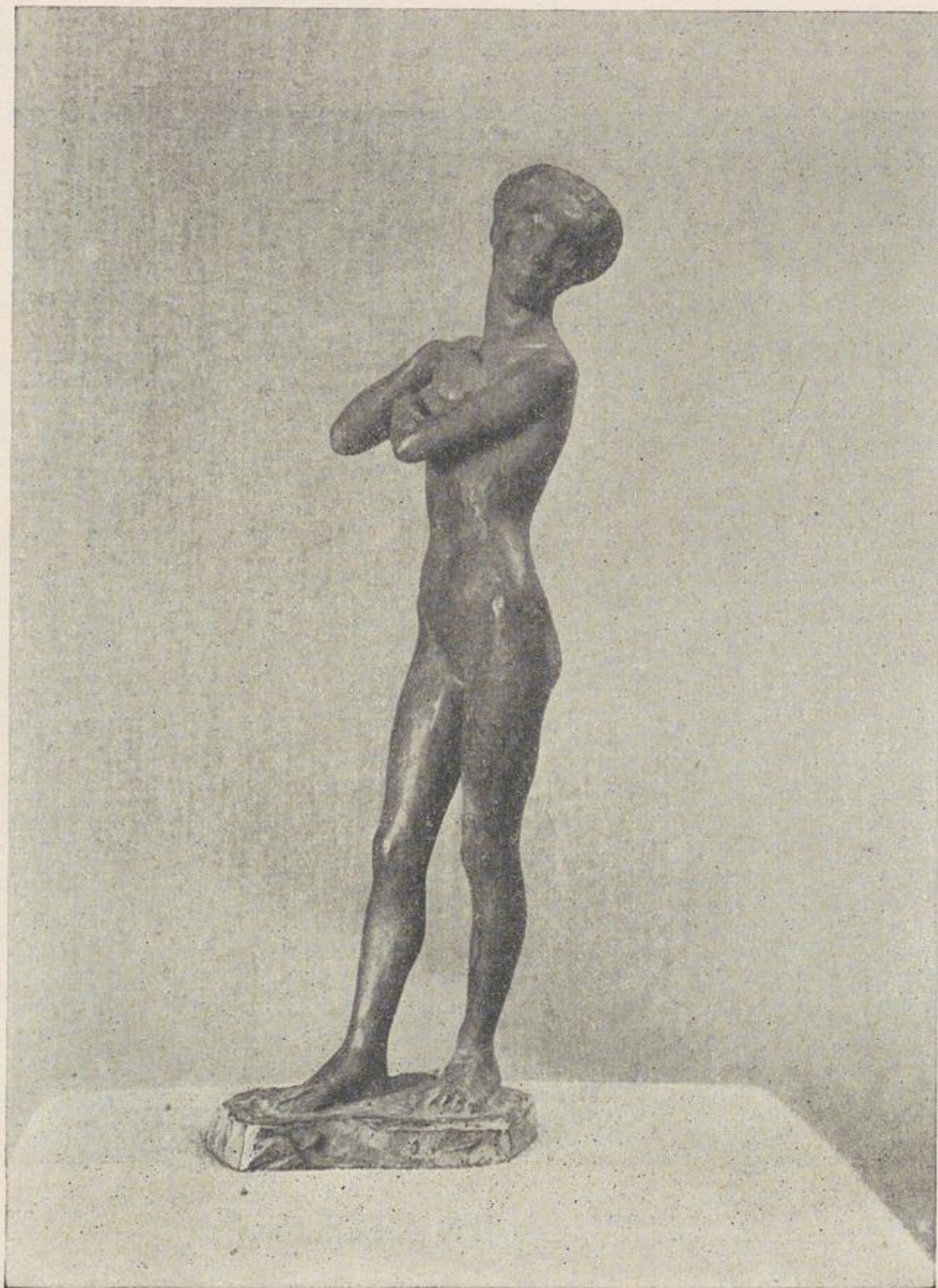


A. SOHN-RETHEL, STILLEBEN MIT FISCHEN

W. G. M. P. G. V. K. N. E. N. S. O. R. T. I. V. I.



W. OPHEY, GARTEN IN SORRENT



M. STEGER, SCHREITENDES MÄDCHEN



P. BONNARD, DIE LAMPE



E. VUILLARD, DER SQUARE



O. REYLAENDER, DER ZITRONENBAUM.

E. ADRIANUS DER SCHEER



O. VON WÄTIEN, STILLEBEN.