



UNIVERSITÄTS-
BIBLIOTHEK
PADERBORN

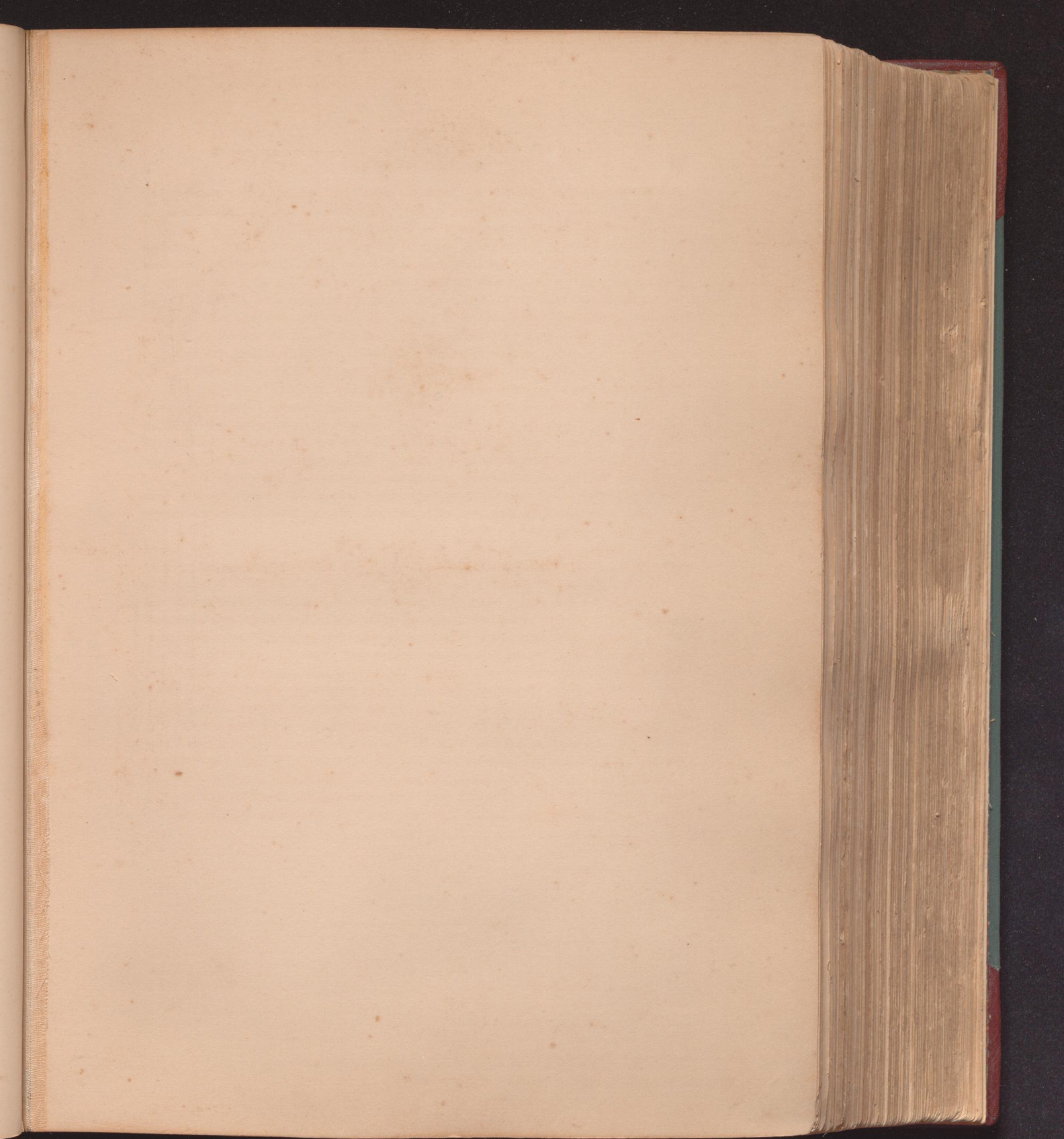
Tree and serpent worship

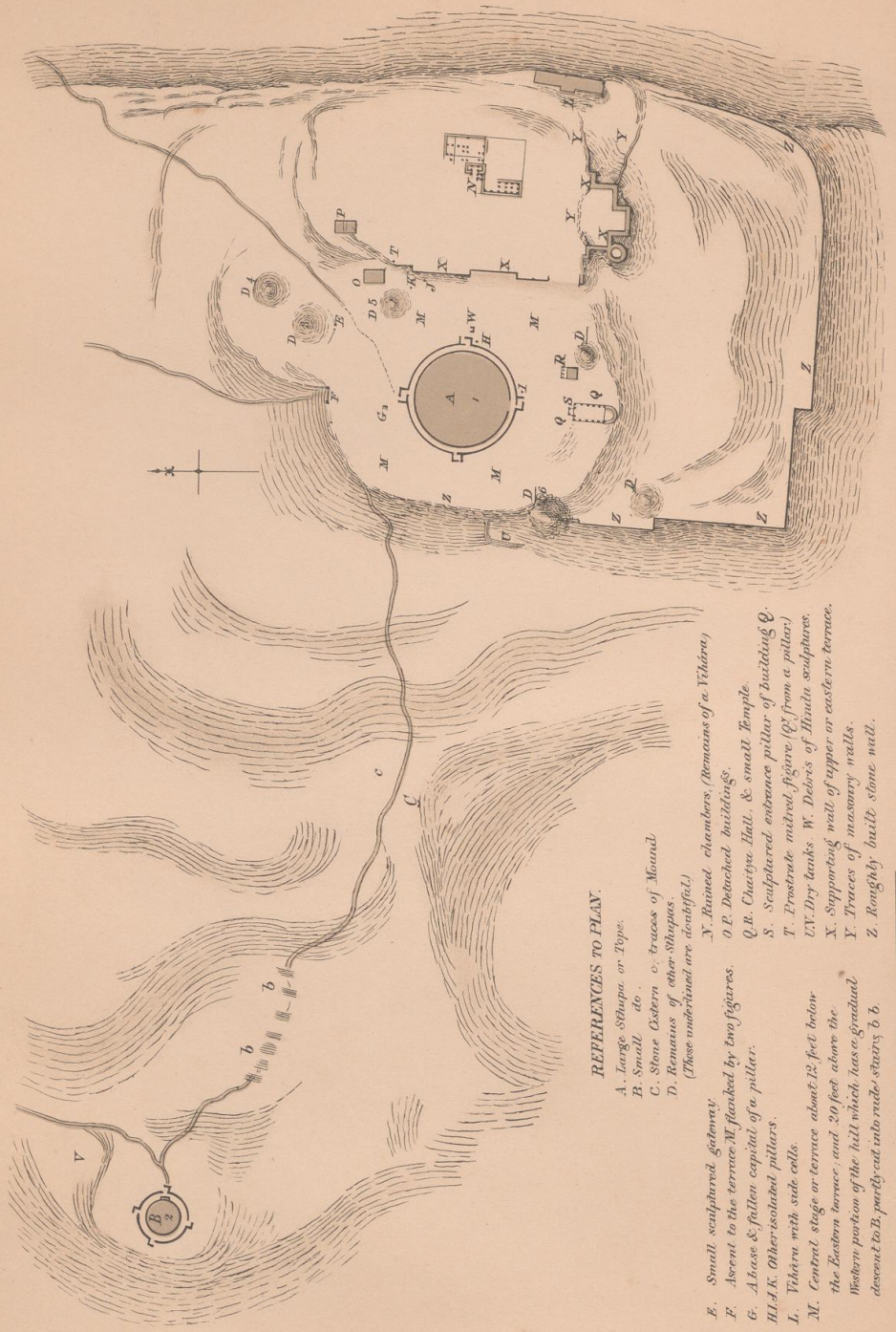
Fergusson, James

London, 1868

Plate I. - Ground Plan Of The Ruins. - From a Drawing by Lieut.-Colonel
Maisey.

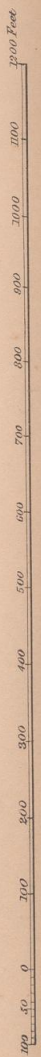
[urn:nbn:de:hbz:466:1-62112](https://nbn-resolving.org/urn:nbn:de:hbz:466:1-62112)





REFERENCES TO PLAN.

- A. Large Stupa or Top.
- B. Small do.
- C. Stone Gateway or traces of Mound.
- D. Remains of other Stupas.
- (These undotted are identified.)
- E. Small sculptured gateway.
- F. Ascent to the terrace, M flanked by two figures.
- G. A base & fallen capital of a pillar.
- H.I.K. Other isolated pillars.
- I. Pillars with side cells.
- M. Central stage or terrace about 12 feet below the Eastern terrace, and 20 feet above the Western portion of the hill which has a gradual descent to B, partly cut into rude stairs b b.
- N. Painted chambers, (Remains of a Vihara).
- O P. Detached buildings.
- Q. R. Chaitya Hall, & small Temple.
- S. Sculptured entrance pillar of building Q.
- T. Frostrate metal figure (Q from a pillar).
- U. V. Dry tanks. W. Debris of Hindu sculptures.
- X. Supporting wall of upper or eastern terrace.
- Y. Traces of masonry walls.
- Z. Roughly built stone wall.



L. COL. MAISEY DEL.

GROUND PLAN OF THE RUINS AT SANCHI.

W. BRIGGS, LITH.