



UNIVERSITÄTS-  
BIBLIOTHEK  
PADERBORN

# **Der Stil in den technischen und tektonischen Künsten oder Praktische Aesthetik**

ein Handbuch für Techniker, Künstler und Kunstfreunde

Die textile Kunst

**Semper, Gottfried**

**Frankfurt a.M., 1860**

[Tafeln]

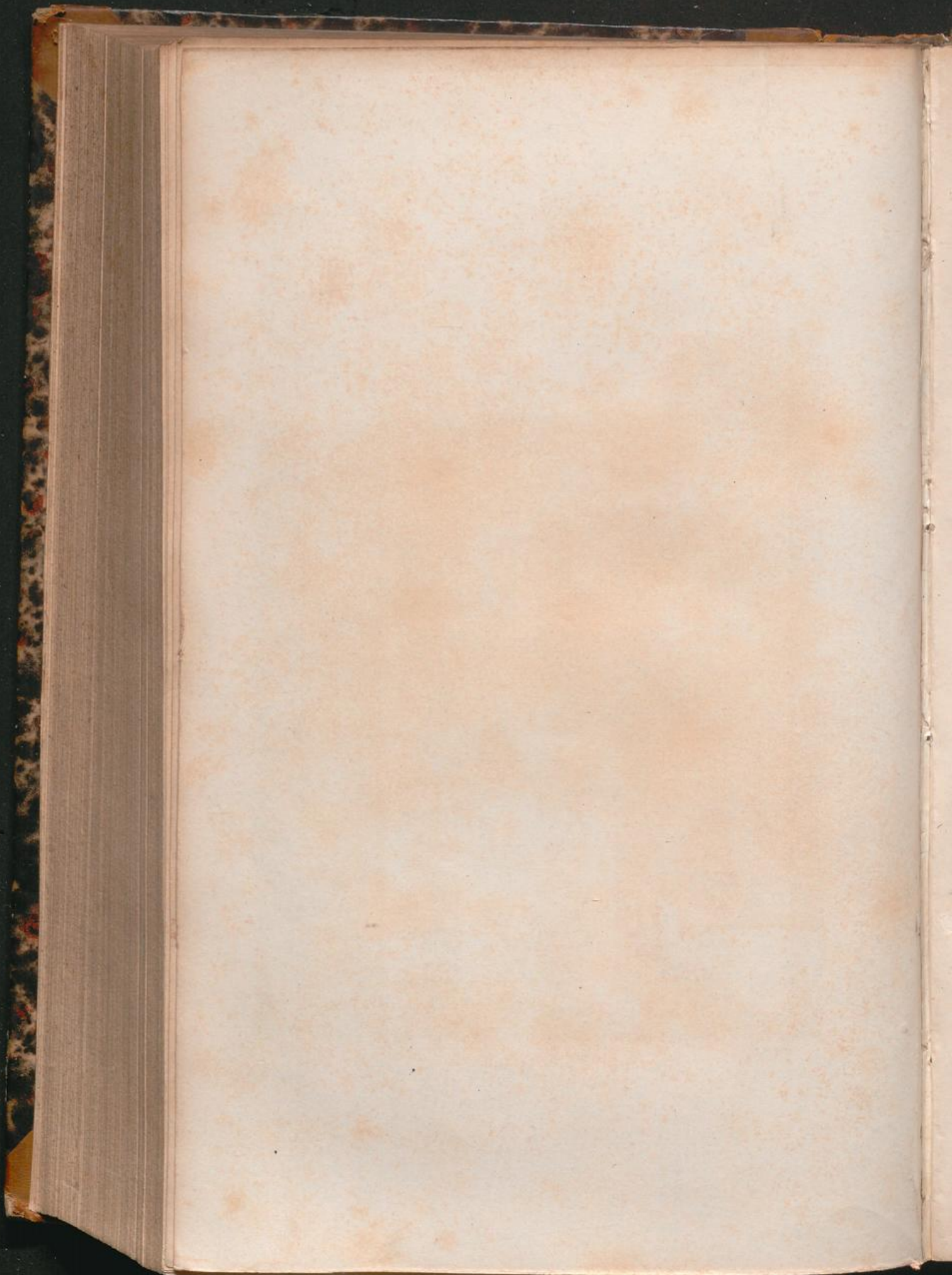
---

[urn:nbn:de:hbz:466:1-62681](https://nbn-resolving.org/urn:nbn:de:hbz:466:1-62681)

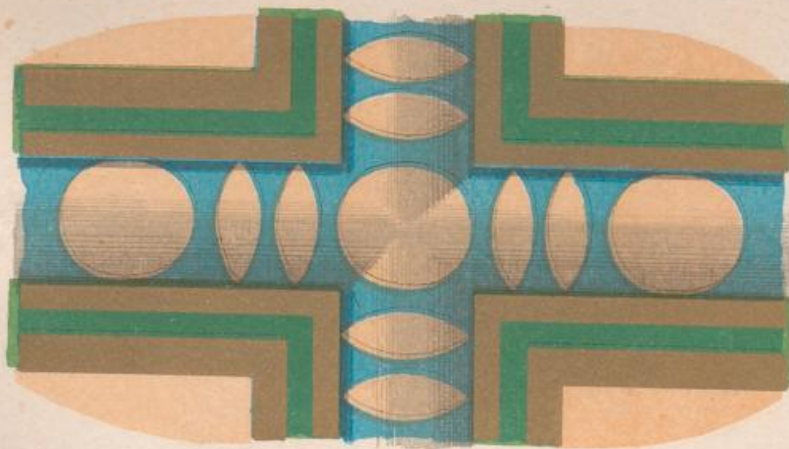
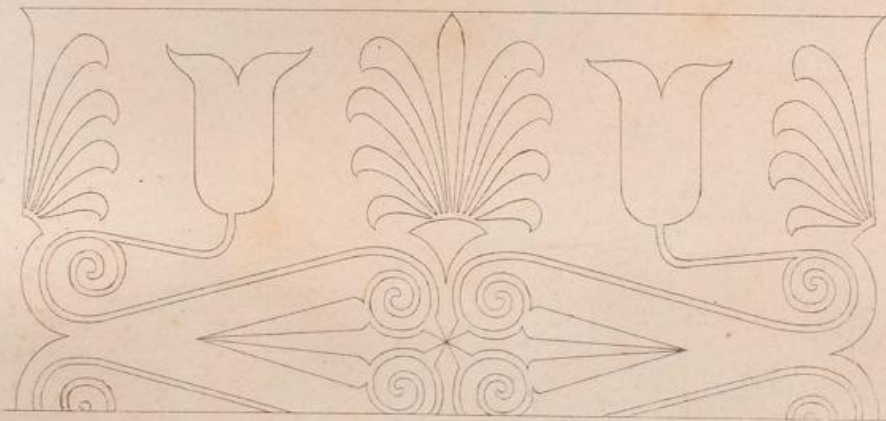
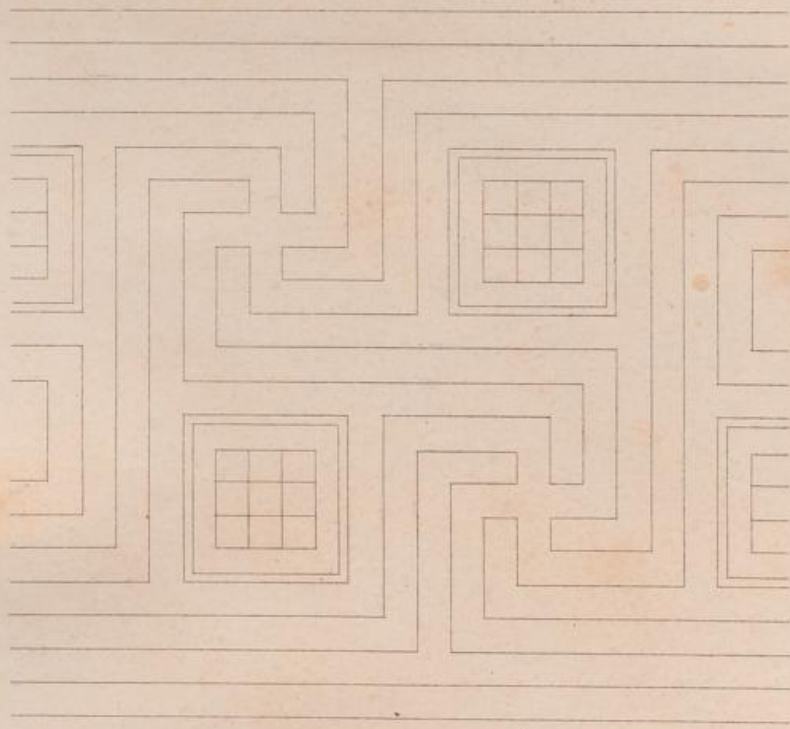
Taf. I.



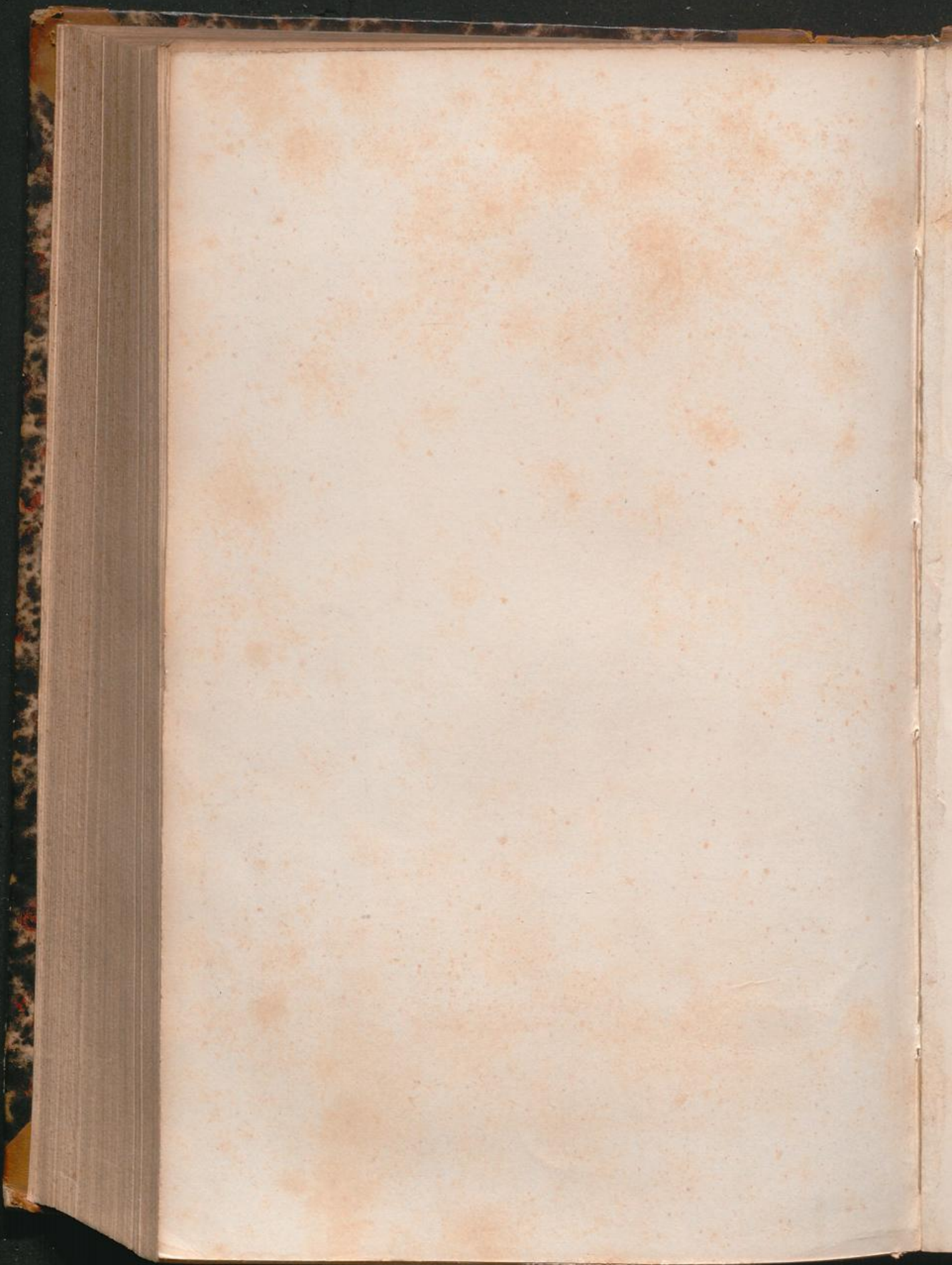
Antenkapital vom Theseustempel zu Athen.



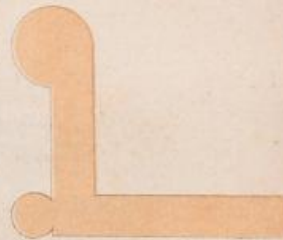
Taf. II.



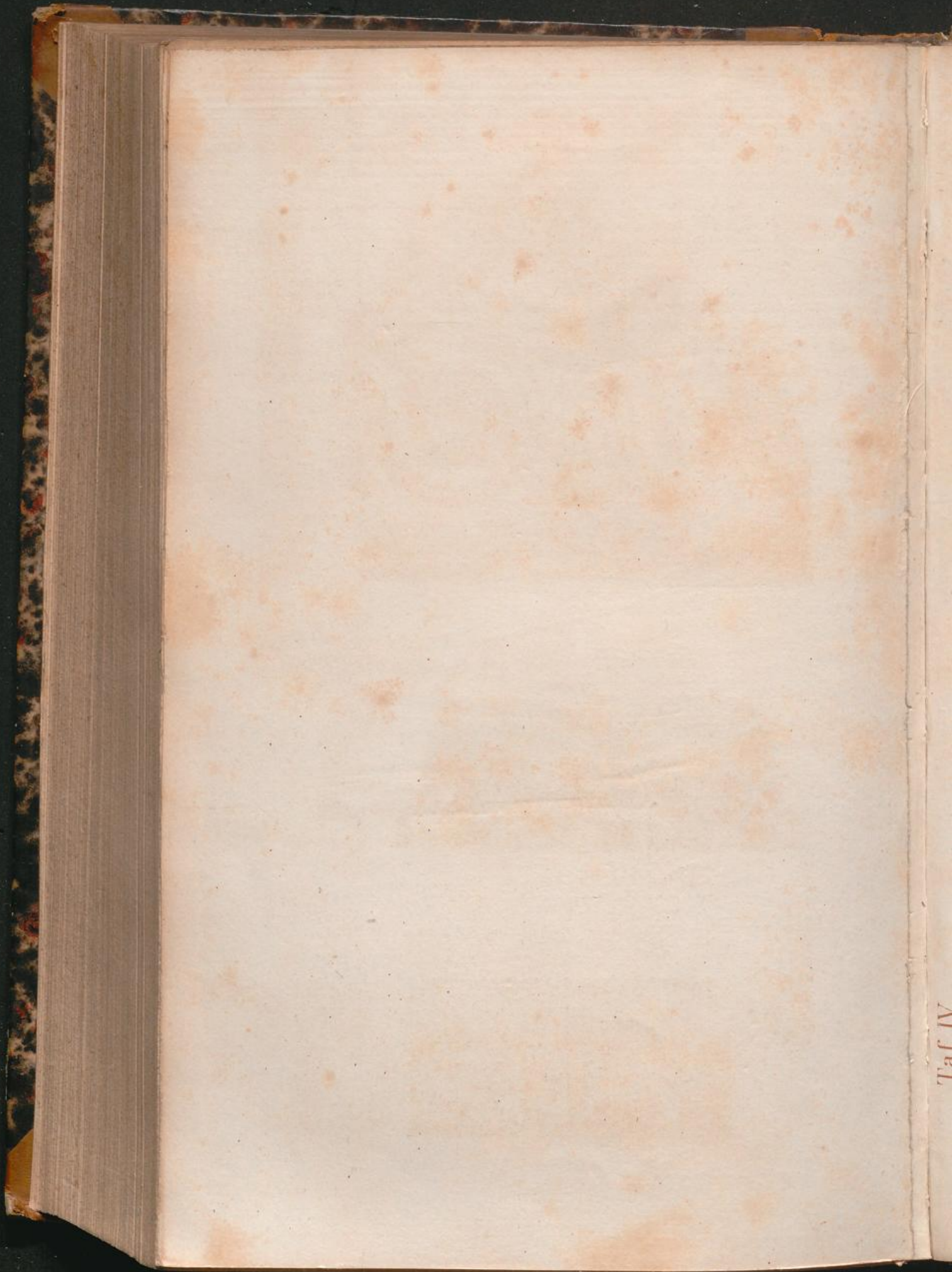
Farbig-gemalte Ornamente an dem Plafond  
des Theseustempels zu Athen.



Taf. III.



Holzbekleidungen aus Terrakotta. (Sicilien.)



Taf IV

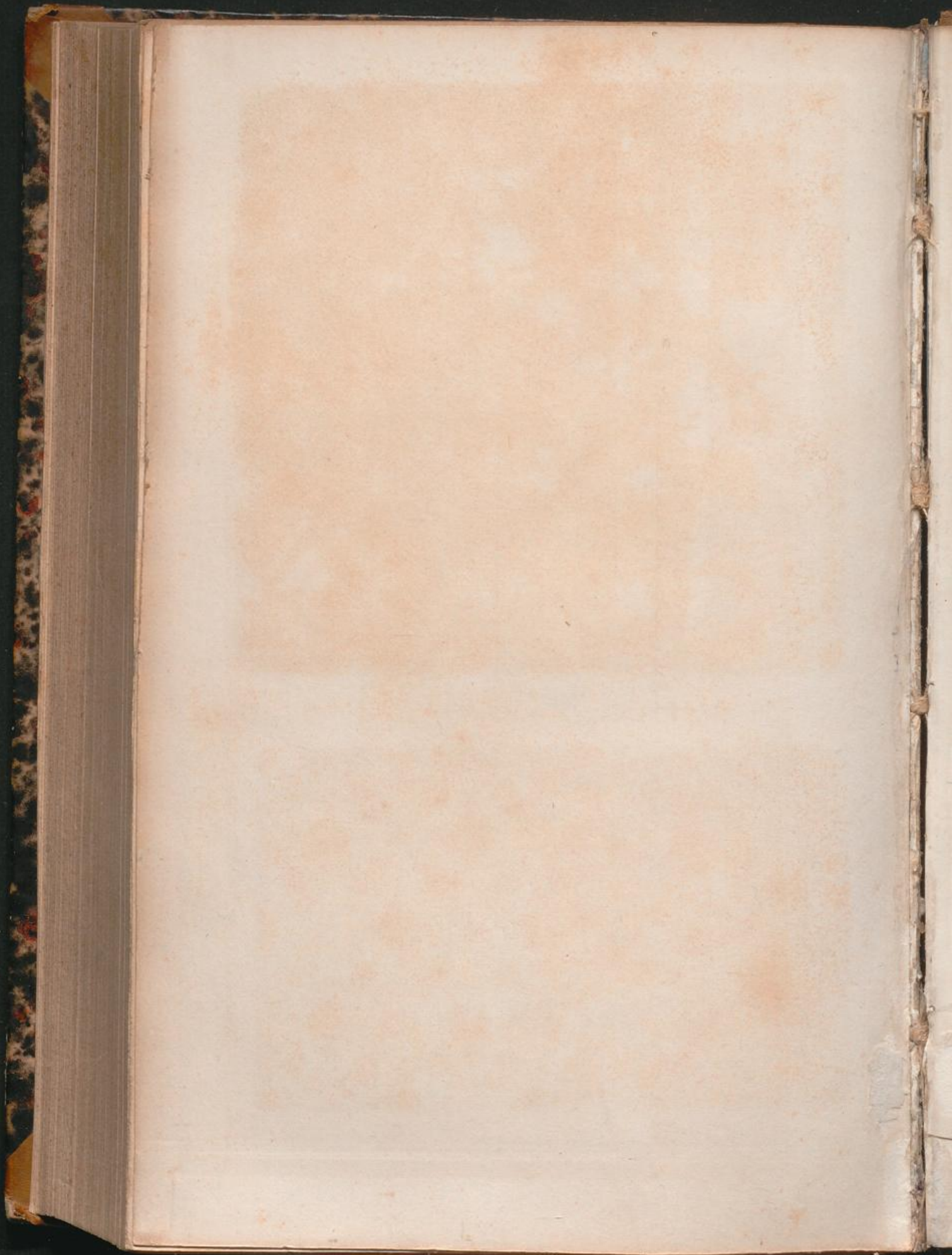


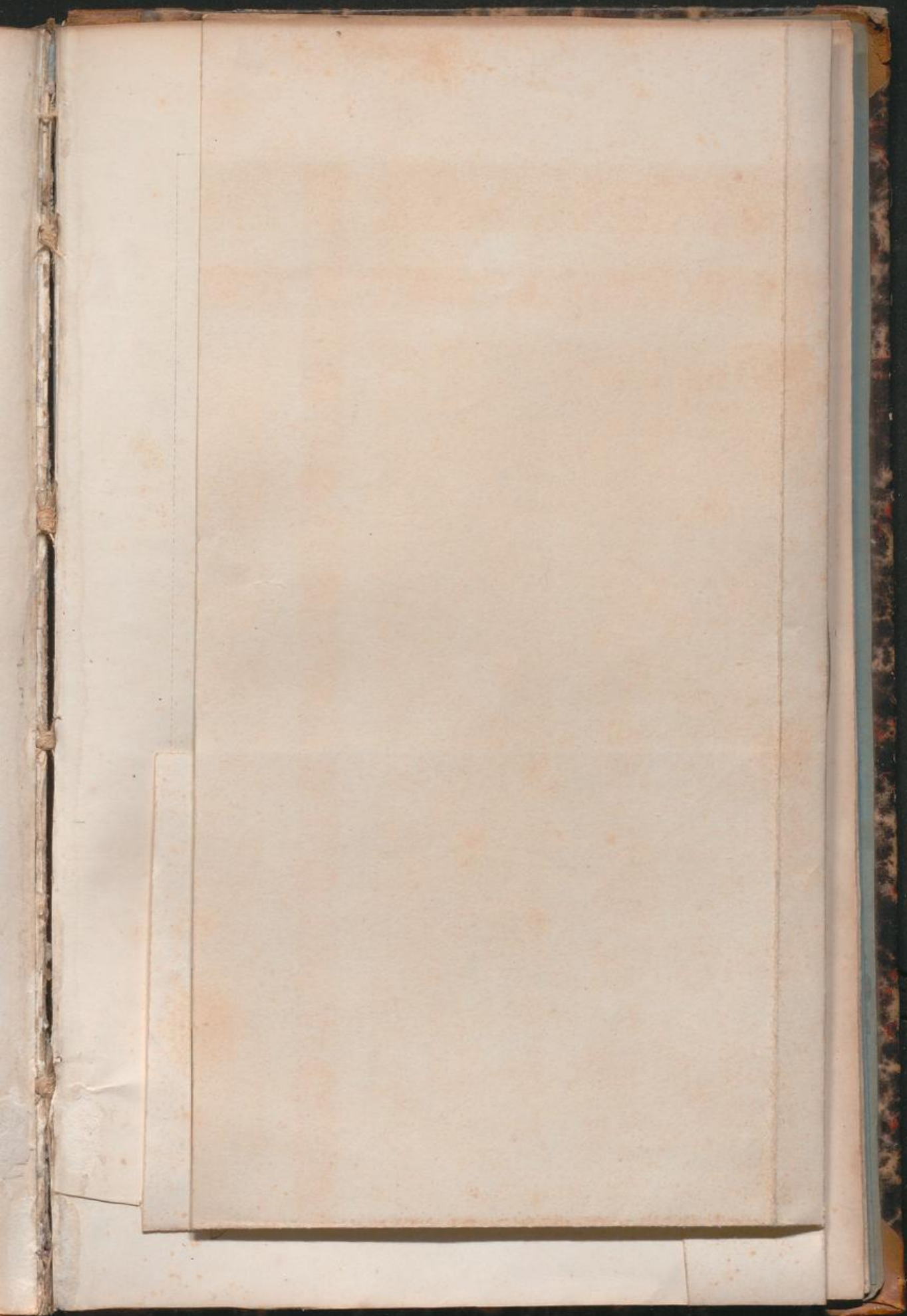


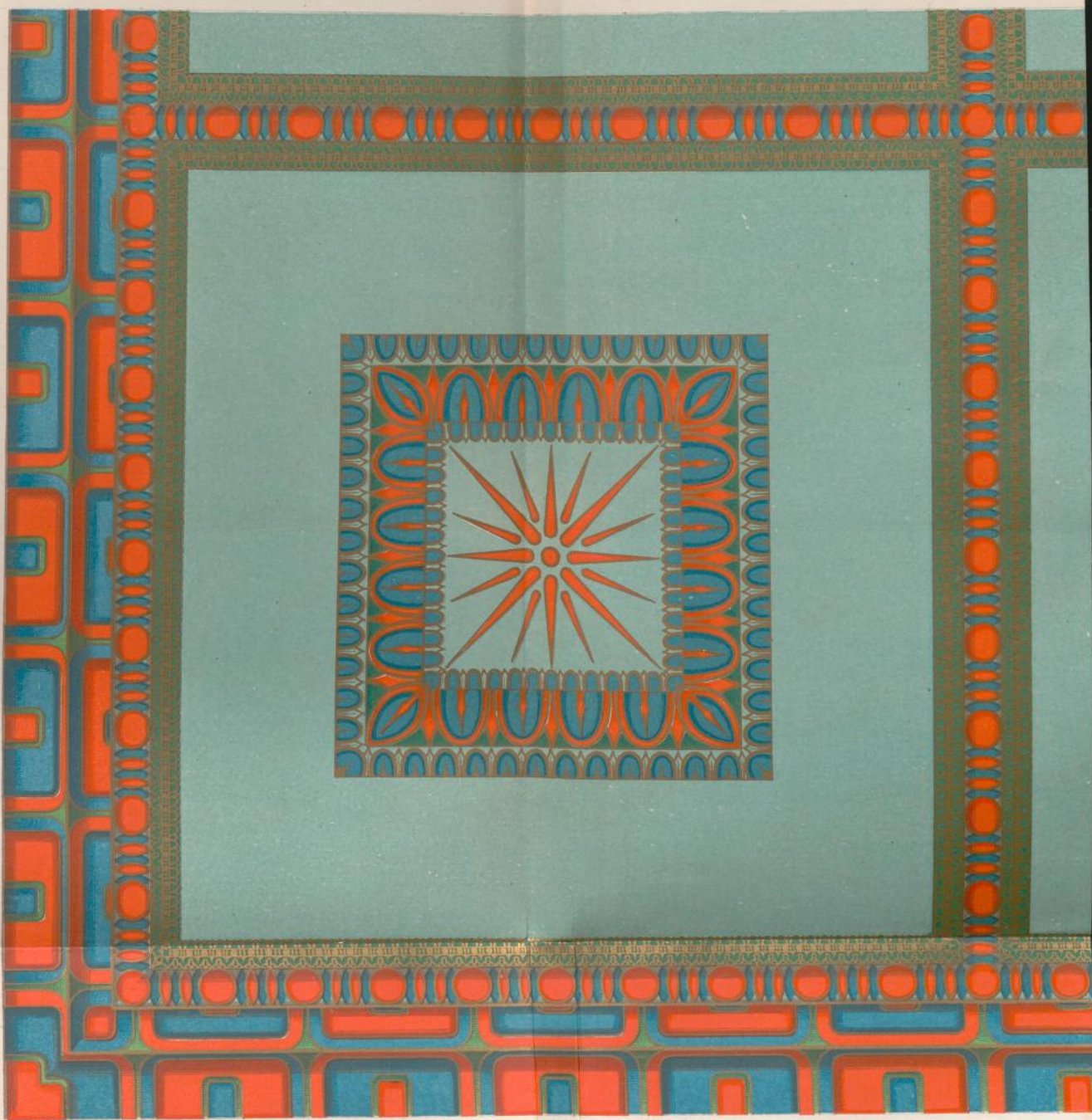
Indische Teppichmuster.

(Mus. für praktische Kunst u. Wissensch. London.)



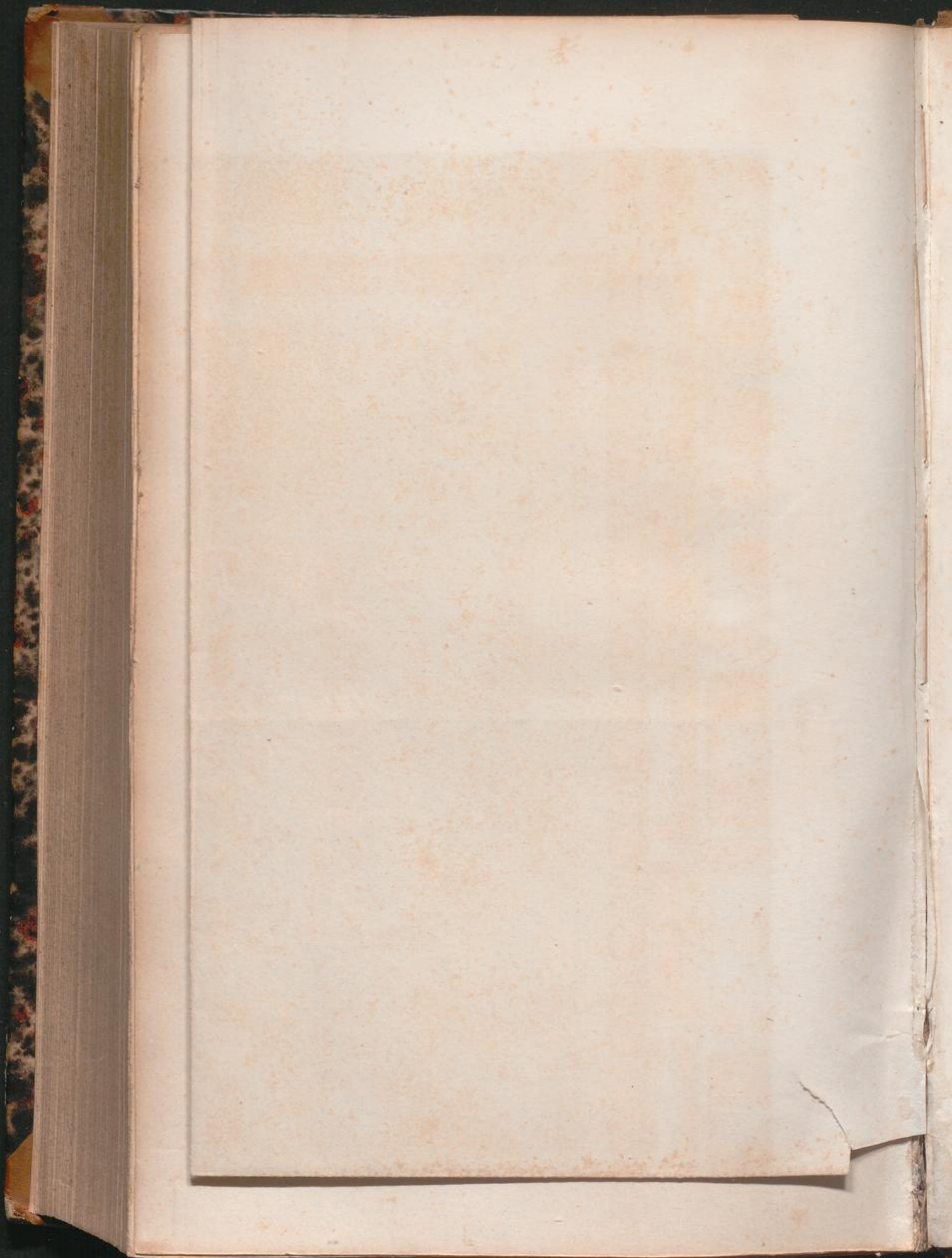






Ein Feld der Decke des Theseustempels zu Athen.

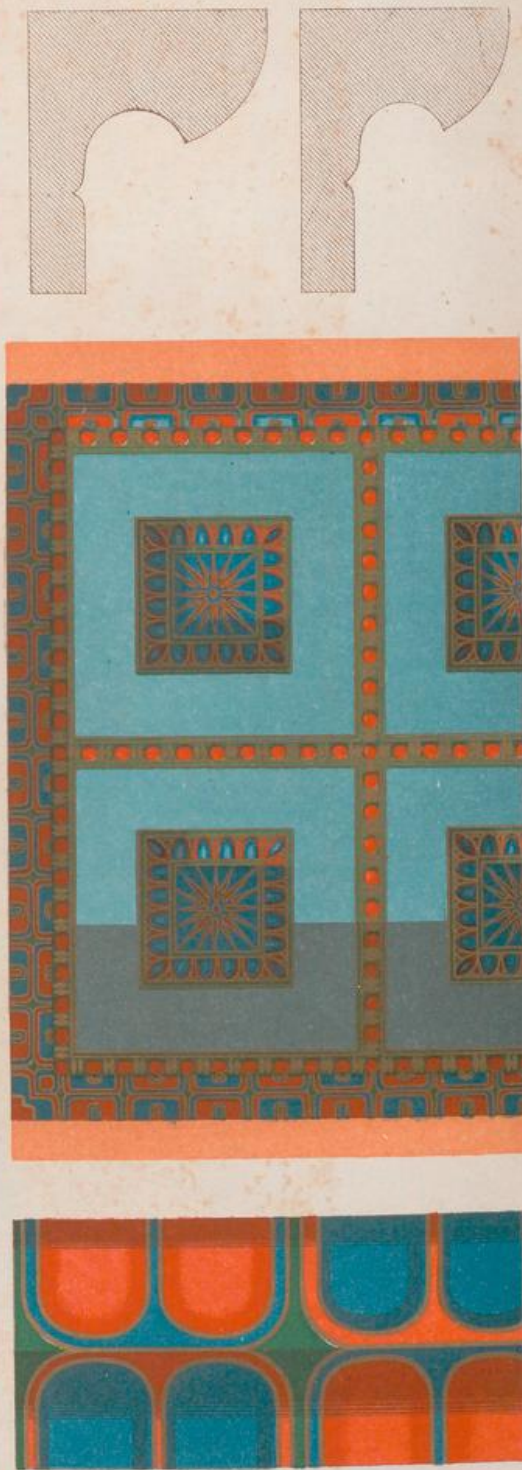
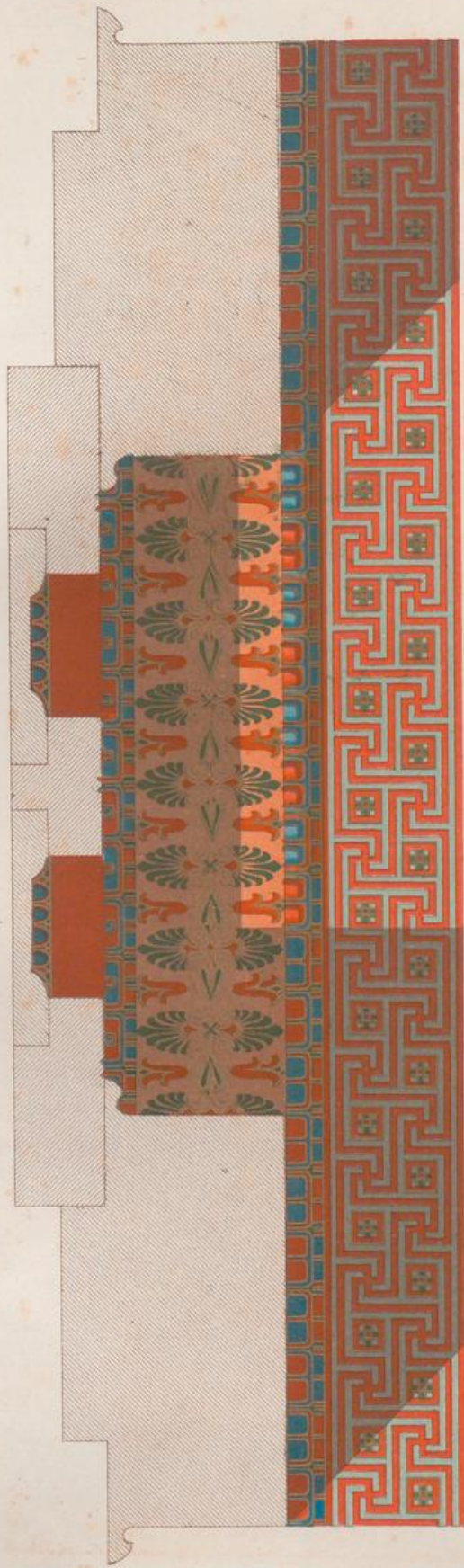
(Halbe Gröfse d. O.)



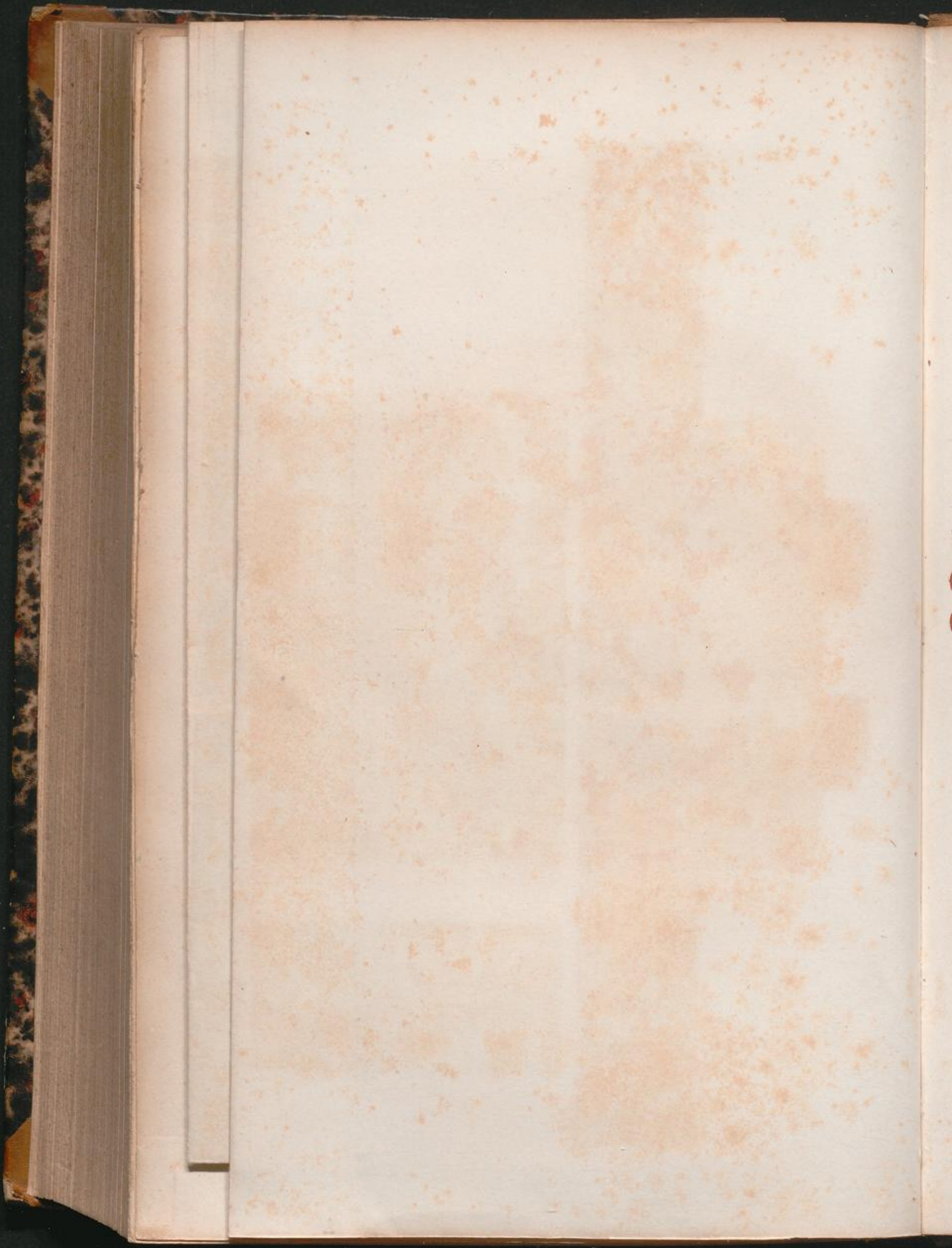
Taf. VI.



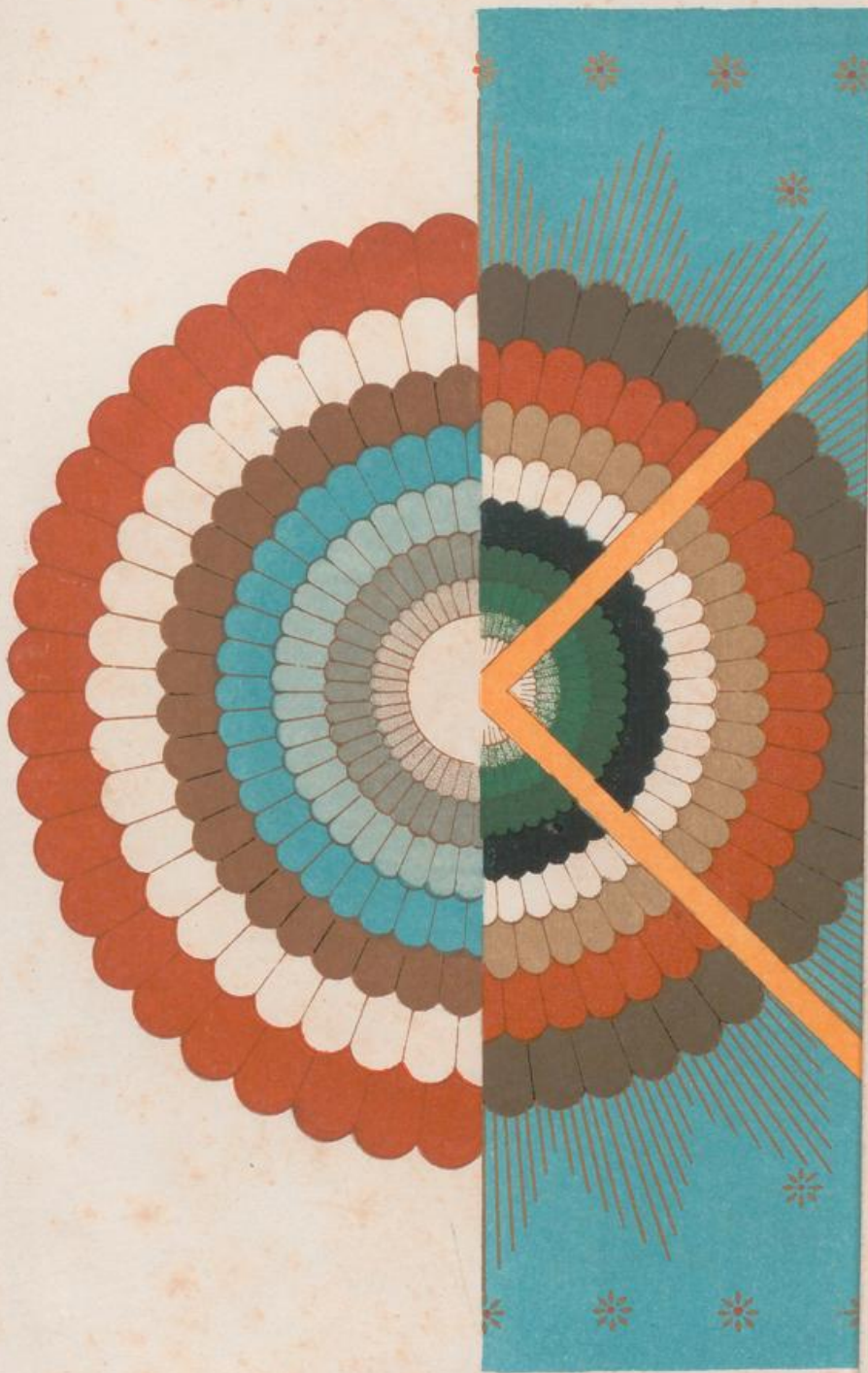
Taf. VI.



Durchschnitt, Untersicht und Details eines Joches der getäfelten Decke.  
des Theseustempels zu Athen.



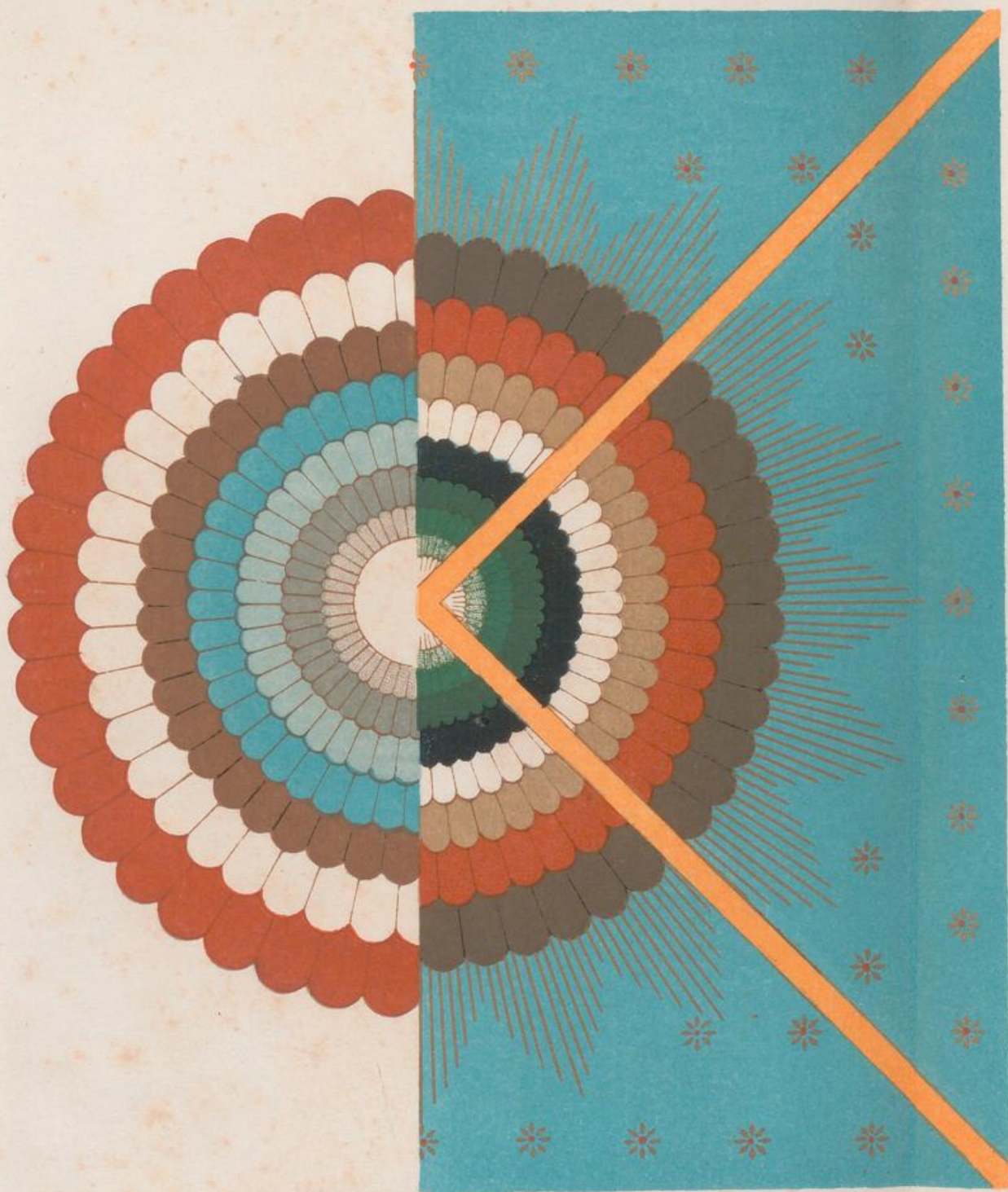
Taf. VII.



Deckenmalereien aus der Kapelle  
S<sup>ta</sup> Catharina. Assisi.



Taf. VII.



Deckenmalereien aus der Kapelle  
S<sup>ta</sup> Catharina. Assisi.



Taf. VIII.

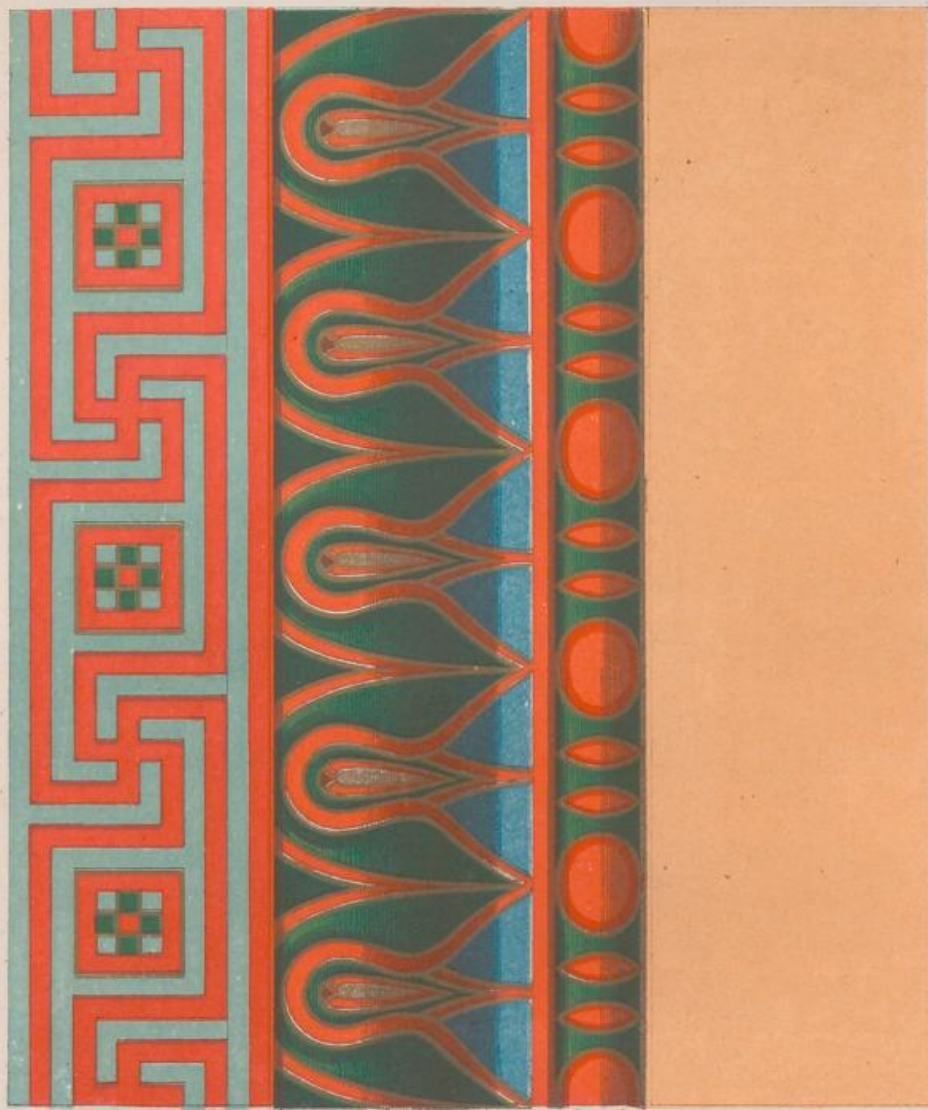


Byzantinische Malerei an einer Kuppel  
zu Athen.

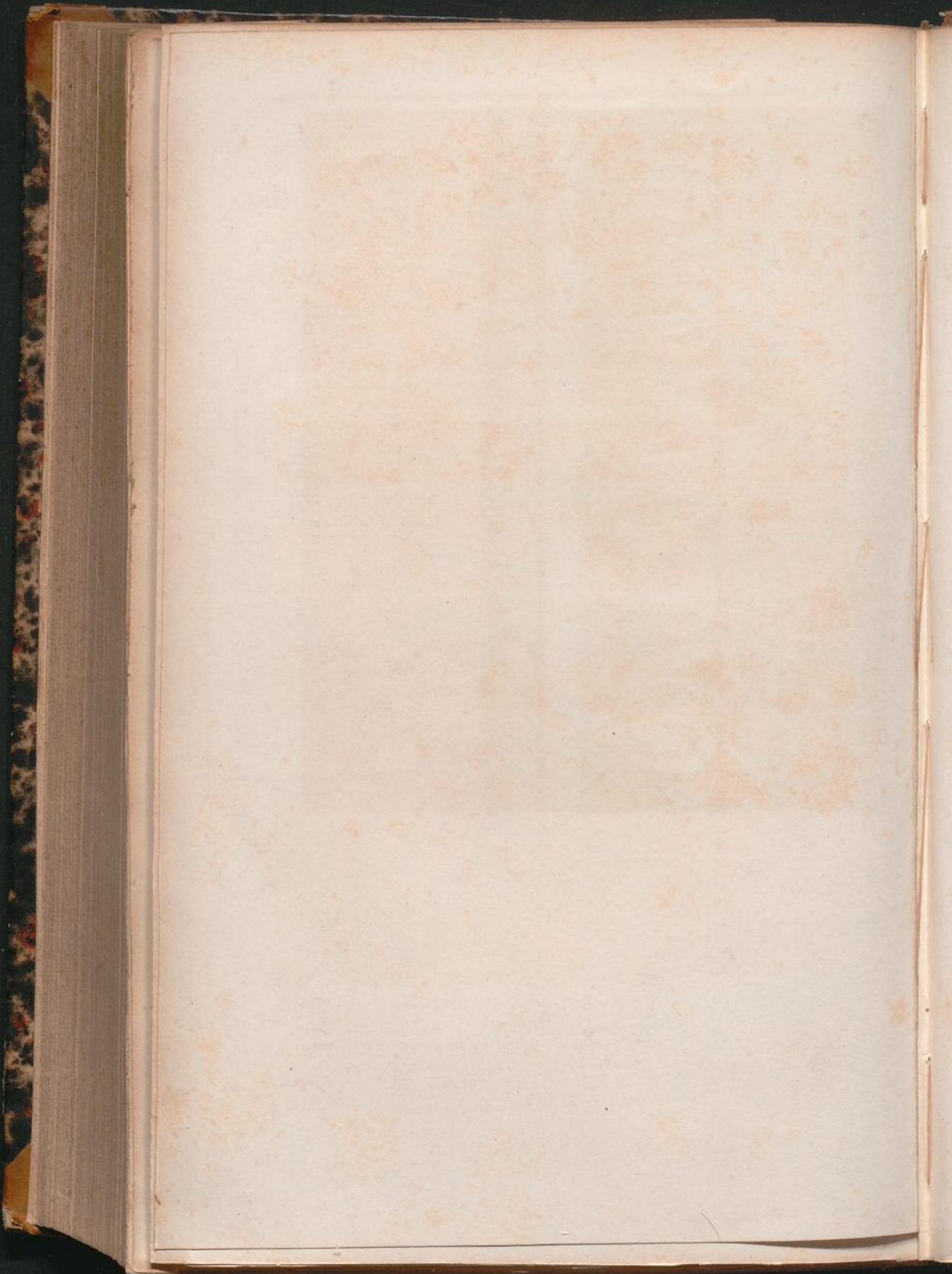
C. Naumann's Druckerei in Frankfurt a/M.

des Irieseustempels zu Athen

Taf. IX.



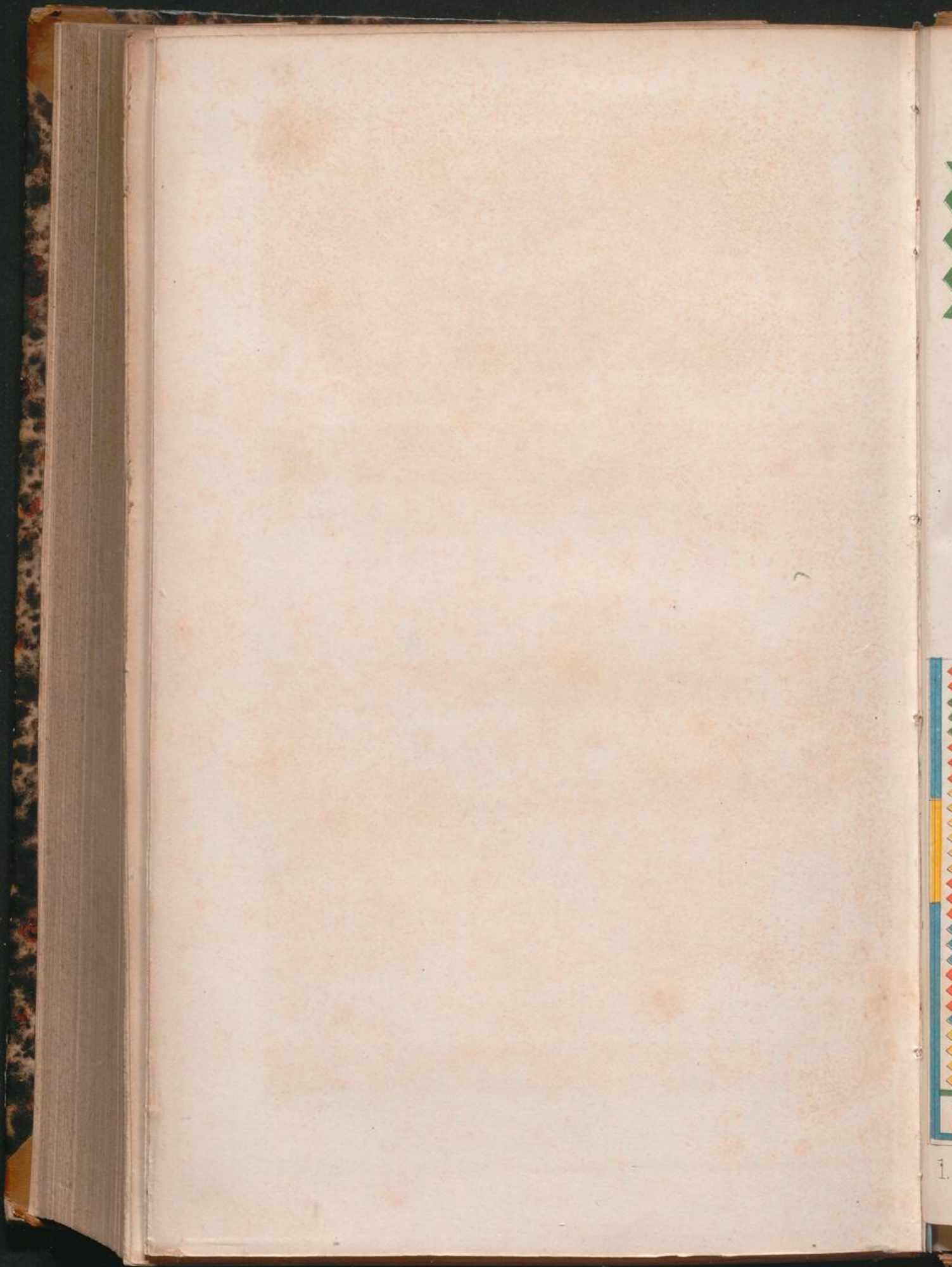
Krönende Glieder des Architravs am Opisthodom  
des Theseustempels zu Athen.



Taf X.



Proben indischer Lackarbeiten  
(nach Redgrave.)





Taf. XI.

1.



2.



3.



4.



5.



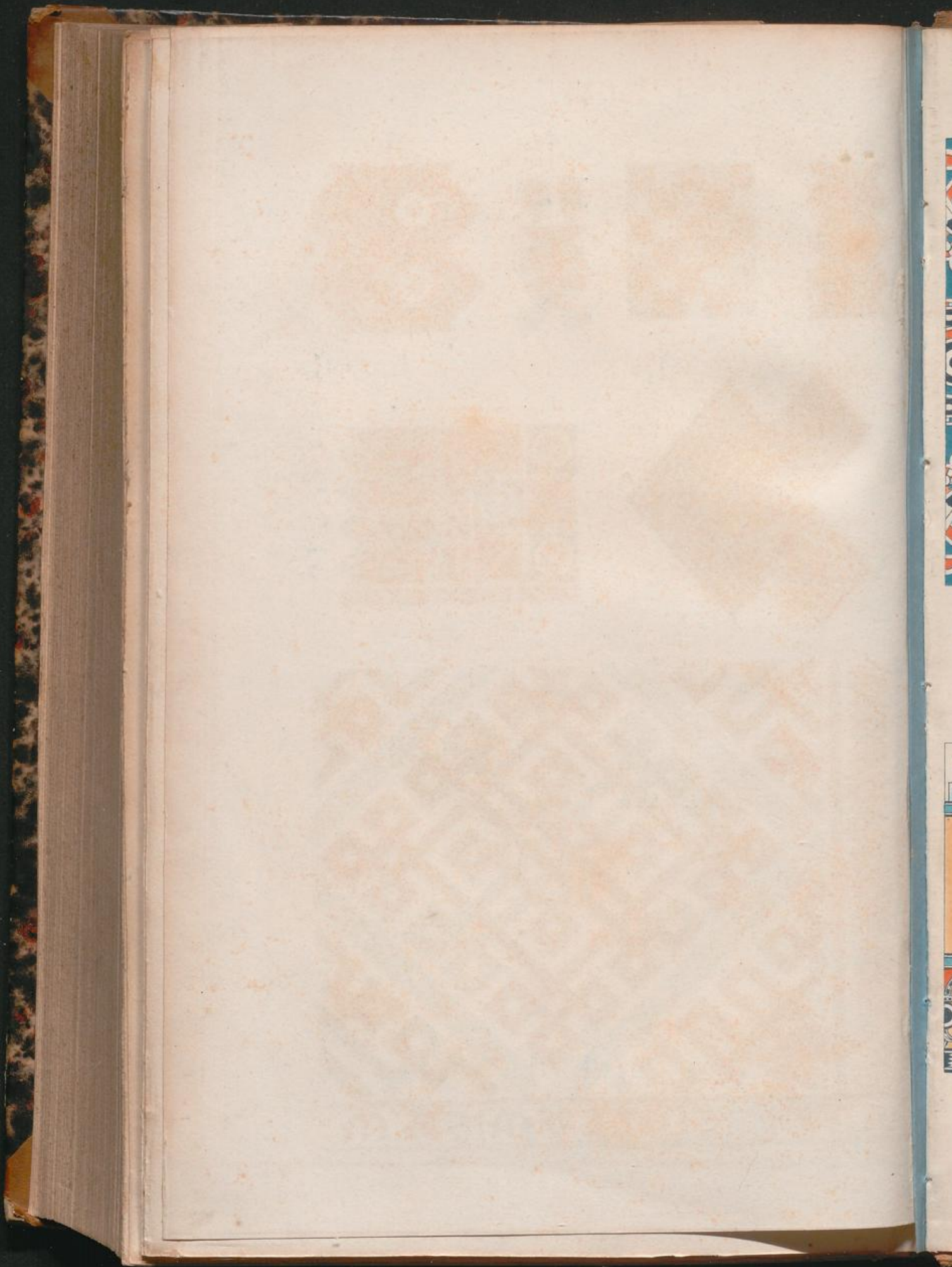
6.

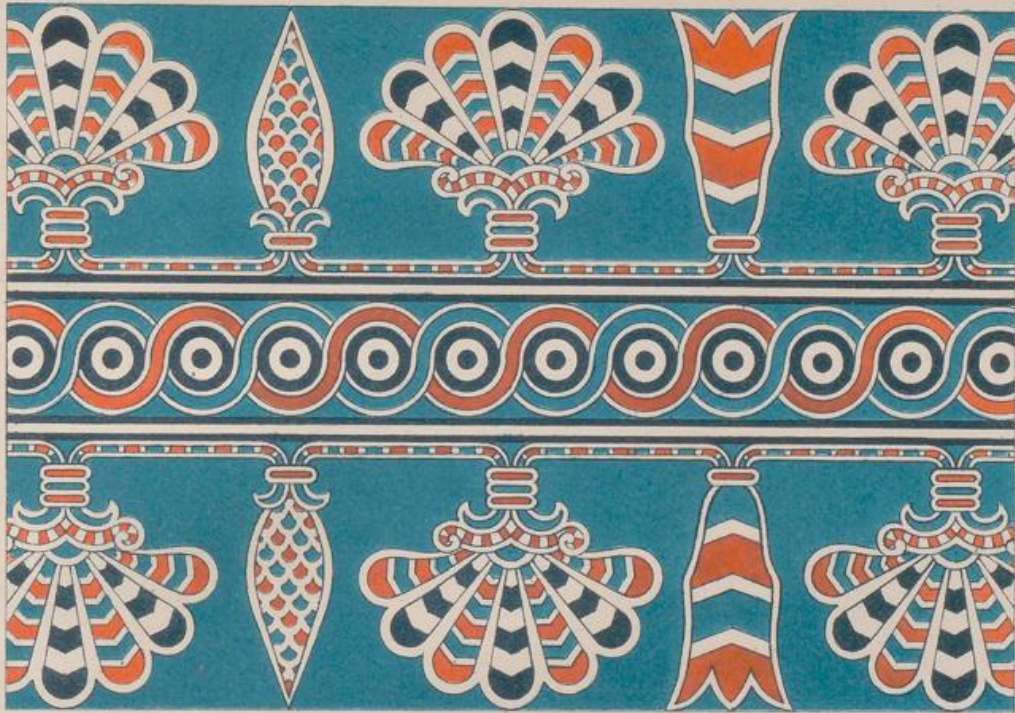


7.



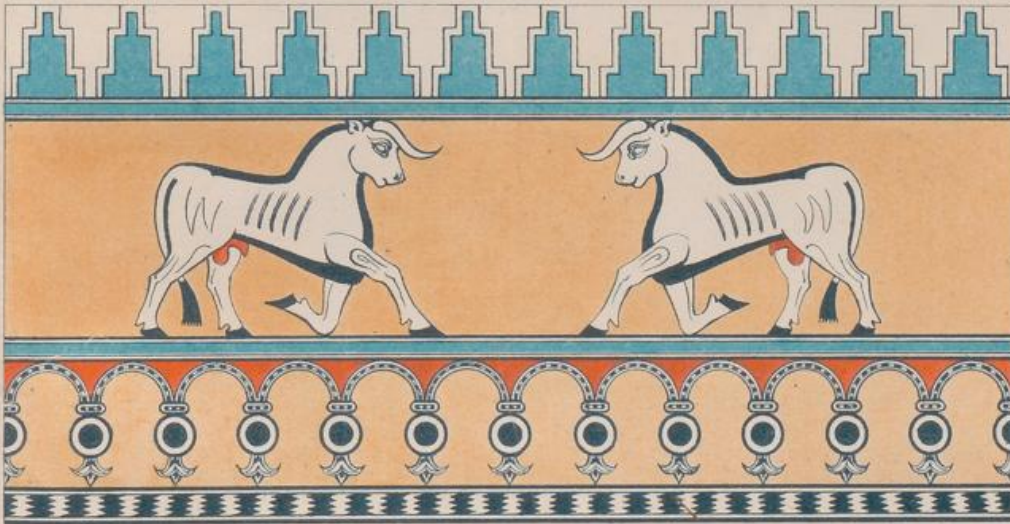
1. 2. 3. 4. 5. 6. Aegyptische Ornamente an Decken u. Wänden der Gräber. 7. Skandinavisches Stückmuster.



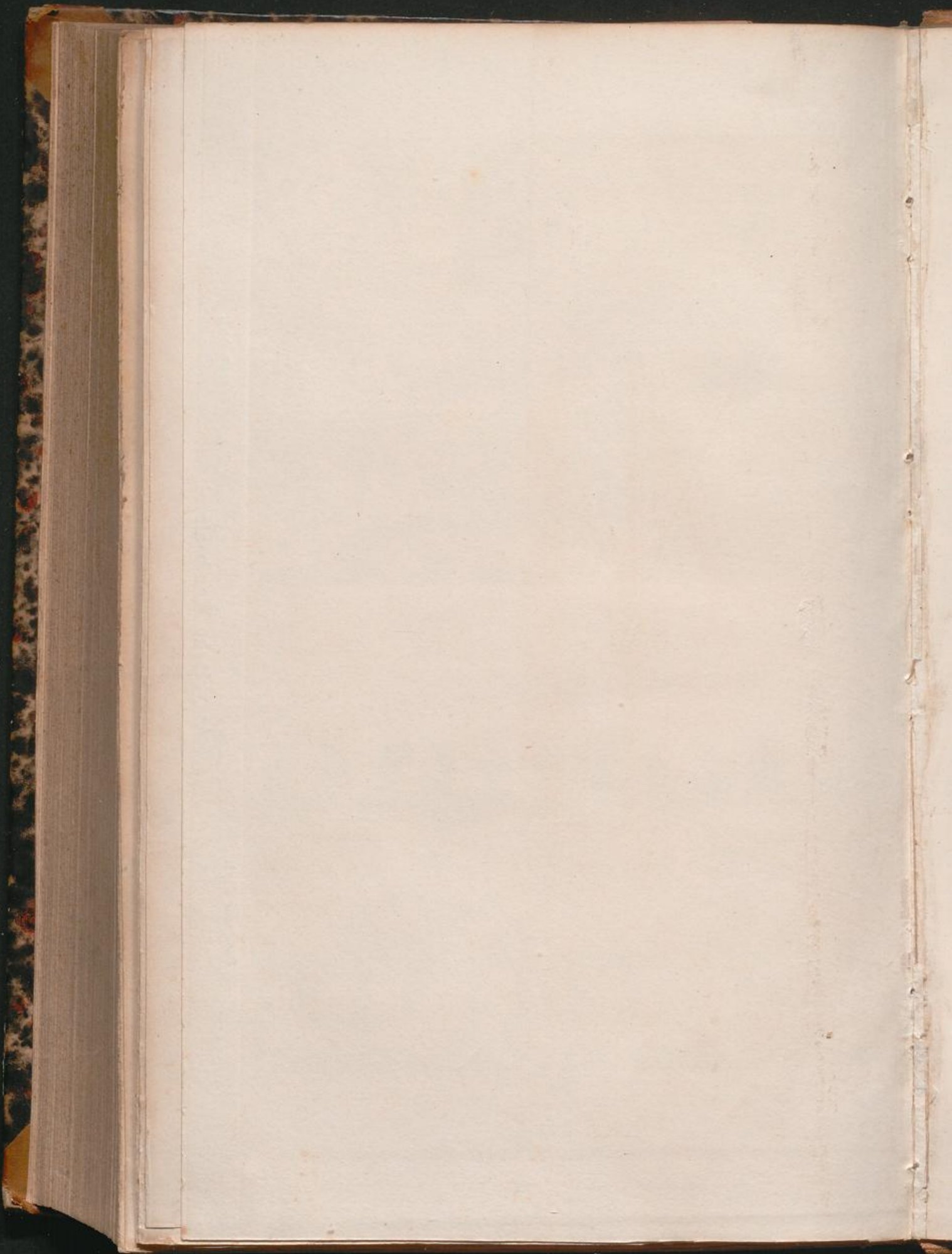


Älterer Styl.

Assyrische Wandmalerei.



Späterer Styl.





G. S. 1859.

Alexandrinische (ägyptisirende) Wandverzierungen in Pompeji.

Wand aus der Casa di Salustio in Pompeji.

Tab. XV.

Wand aus der Casa di Salustio in Pompeji.



Tab. XV.

