



UNIVERSITÄTS-  
BIBLIOTHEK  
PADERBORN

## **Antike Alphabete**

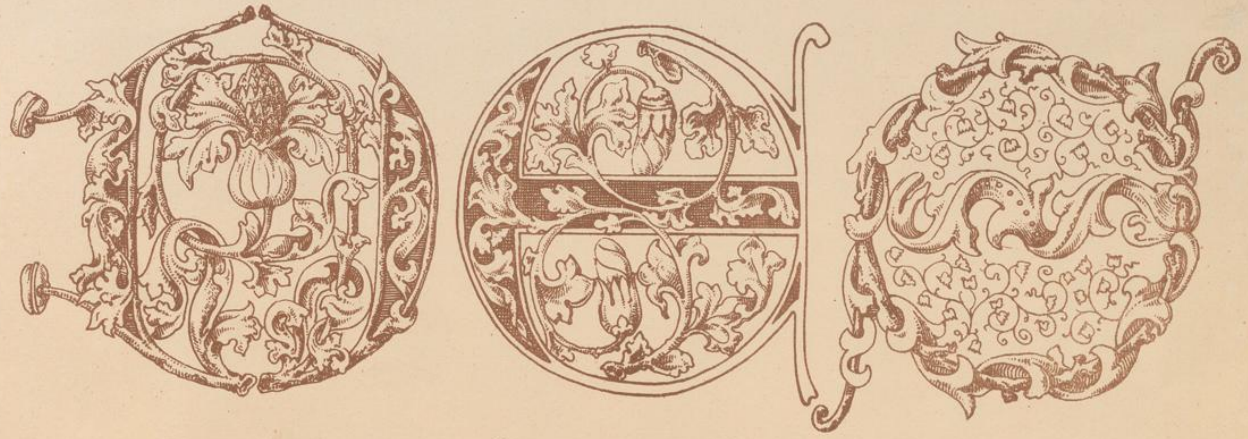
**Seghers, Louis**

**Köln, [1883]**

13e Siècle. (1e moitié) fragments et alphabets (Allemands), d'après Idem.  
Idem.

---

[urn:nbn:de:hbz:466:1-63165](https://nbn-resolving.org/urn:nbn:de:hbz:466:1-63165)



AAABBCCCDDDEEFFGGHHIIJJLLMMNRRR  
 OOPPQRRRRSSSSSTTUUVVXXXZ.  
 aabceefghilmno.pppqrrrfttuuvxxp.

