



UNIVERSITÄTS-
BIBLIOTHEK
PADERBORN

Leitfaden für das elementare Linearzeichnen

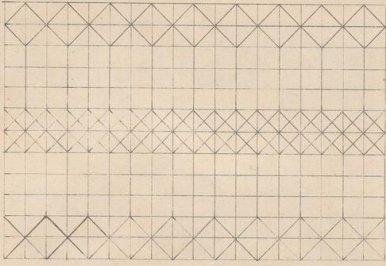
Voltz, Carl

Nördlingen, 1872

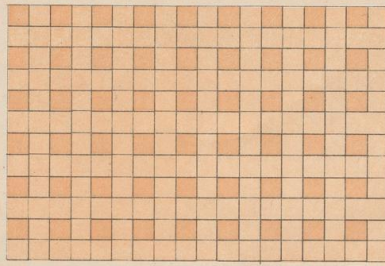
Tafel XIII.

[urn:nbn:de:hbz:466:1-63963](https://nbn-resolving.org/urn:nbn:de:hbz:466:1-63963)

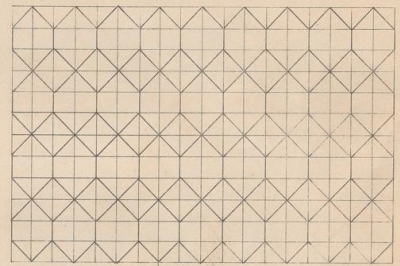
Flächen-Muster.



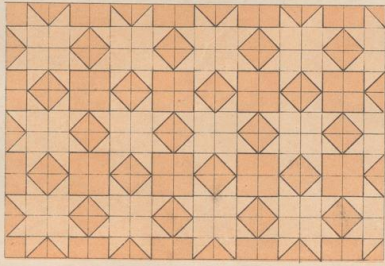
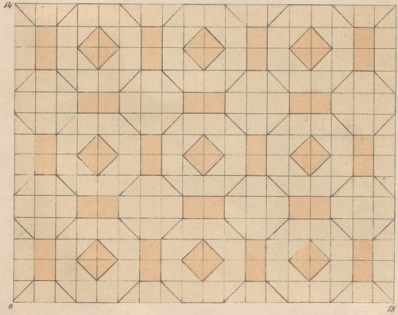
H · L = 2 · 3.



H · L = 2 · 3.



H · L = 2 · 3.



H · L = 2 · 3.

