



UNIVERSITÄTS-
BIBLIOTHEK
PADERBORN

Der kleine Altdeutsche (Gothe) oder Grundzüge des altdeutschen Baustyles

zum Handgebrauch für Architekten und Steinmetzen, besonders für
technische Lehranstalten

Heideloff, Carl Alexander von

Nürnberg, 1850

[Tafeln]

[urn:nbn:de:hbz:466:1-65262](https://nbn-resolving.org/urn:nbn:de:hbz:466:1-65262)

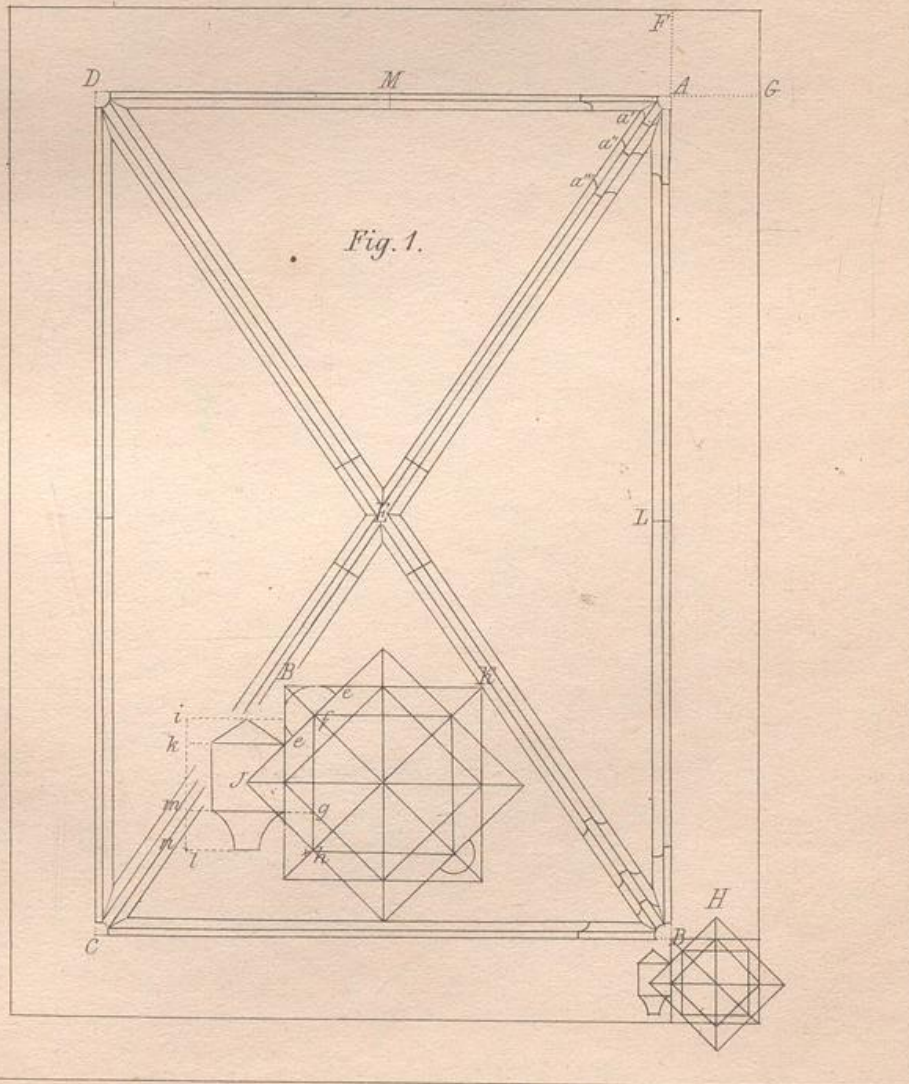
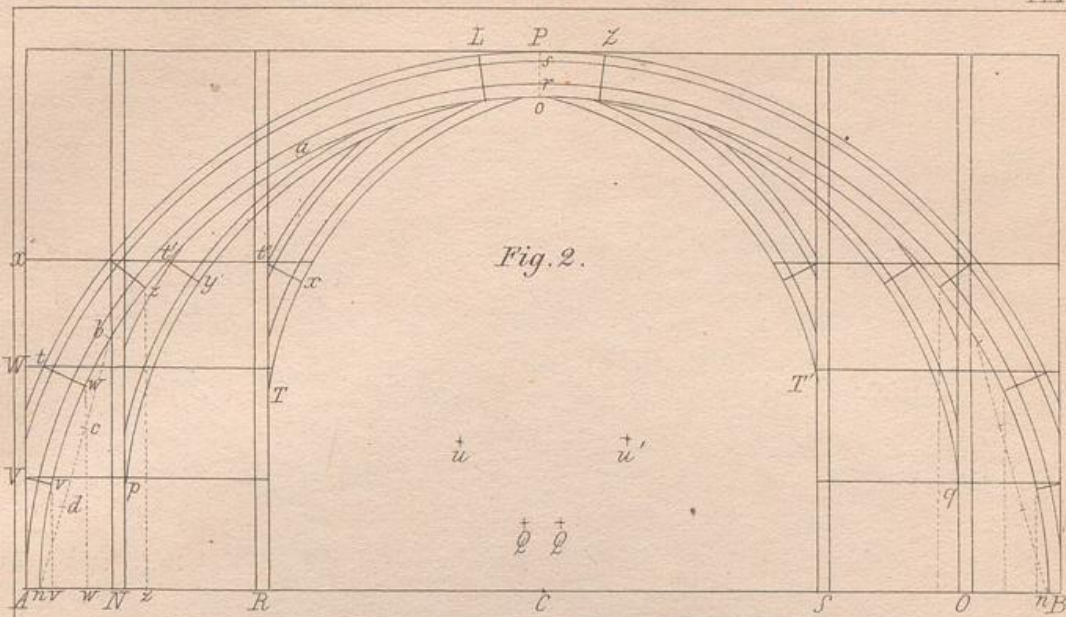


Fig. 2.

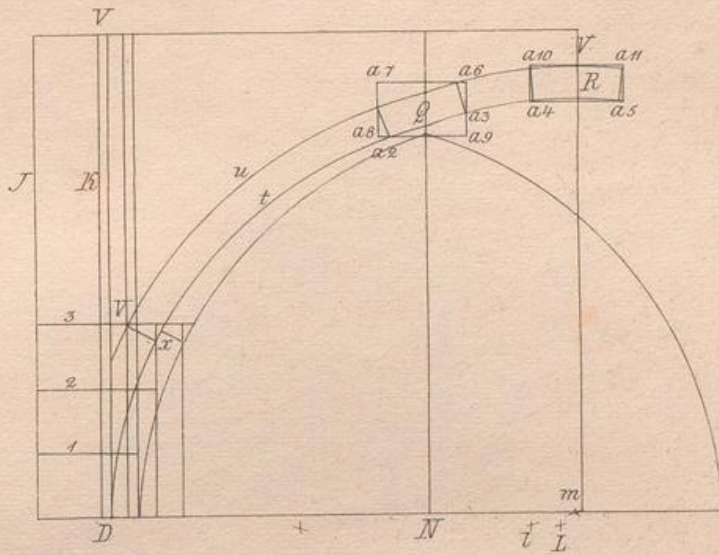


Fig. 1.

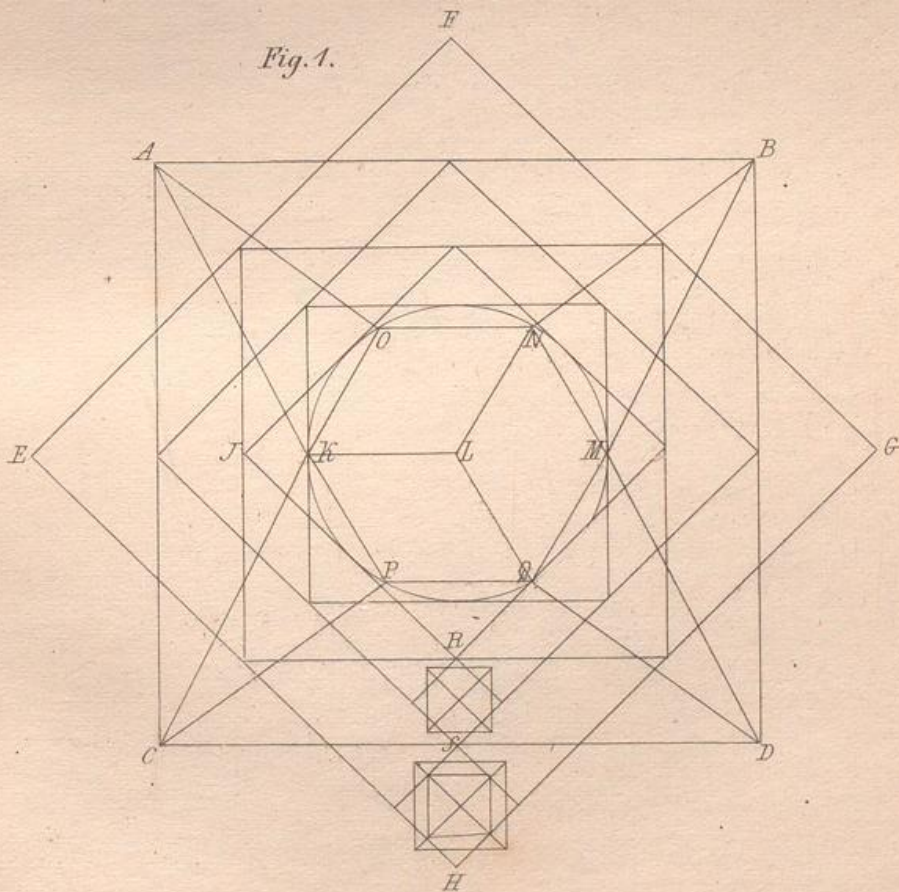


Fig. 1.

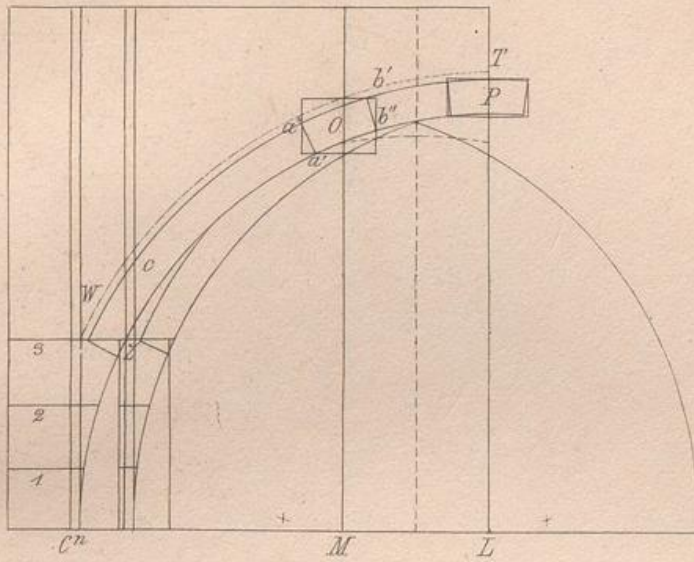
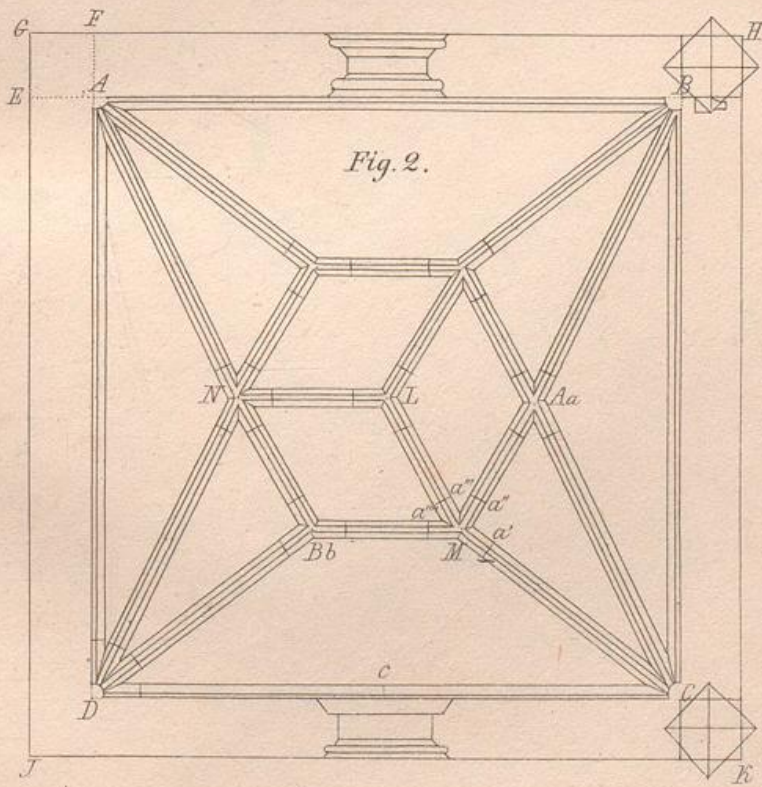
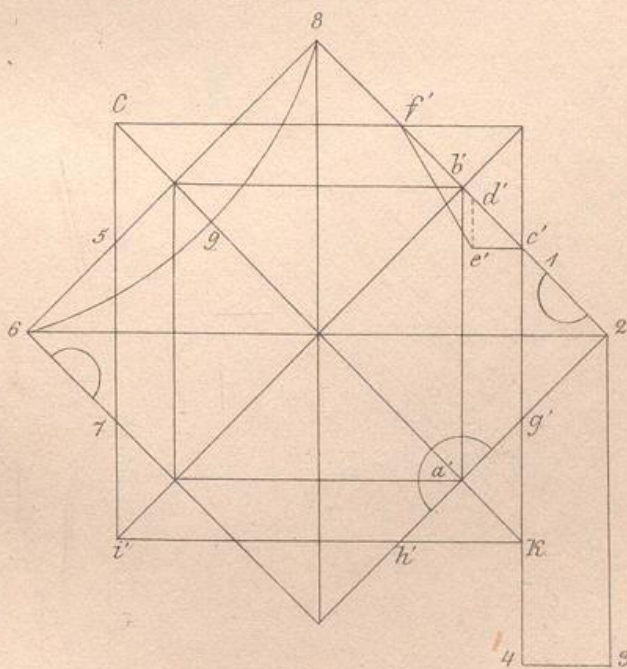
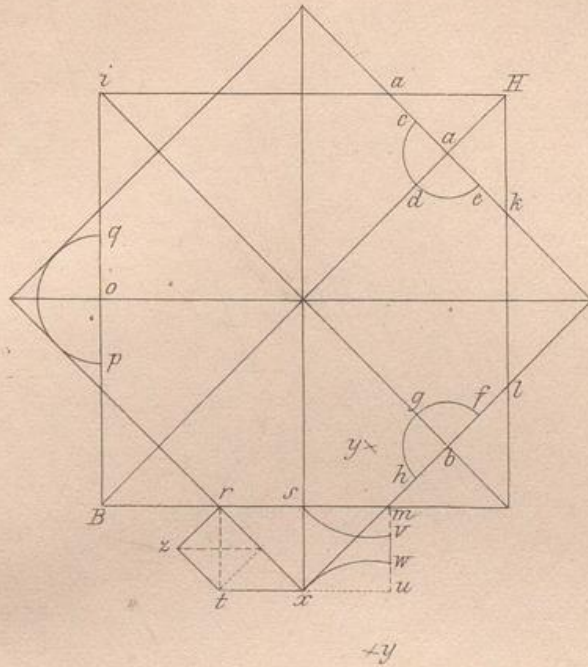


Fig. 2.





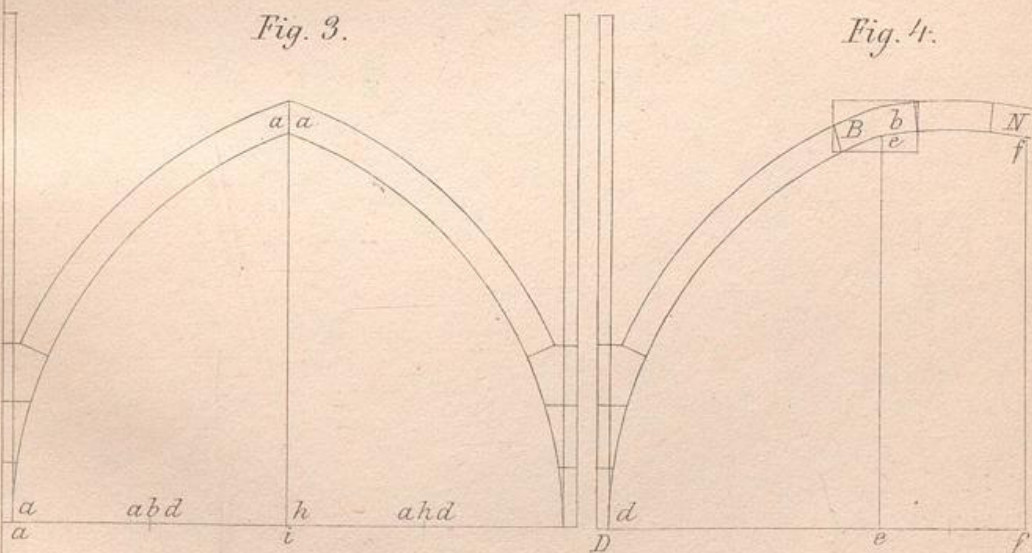
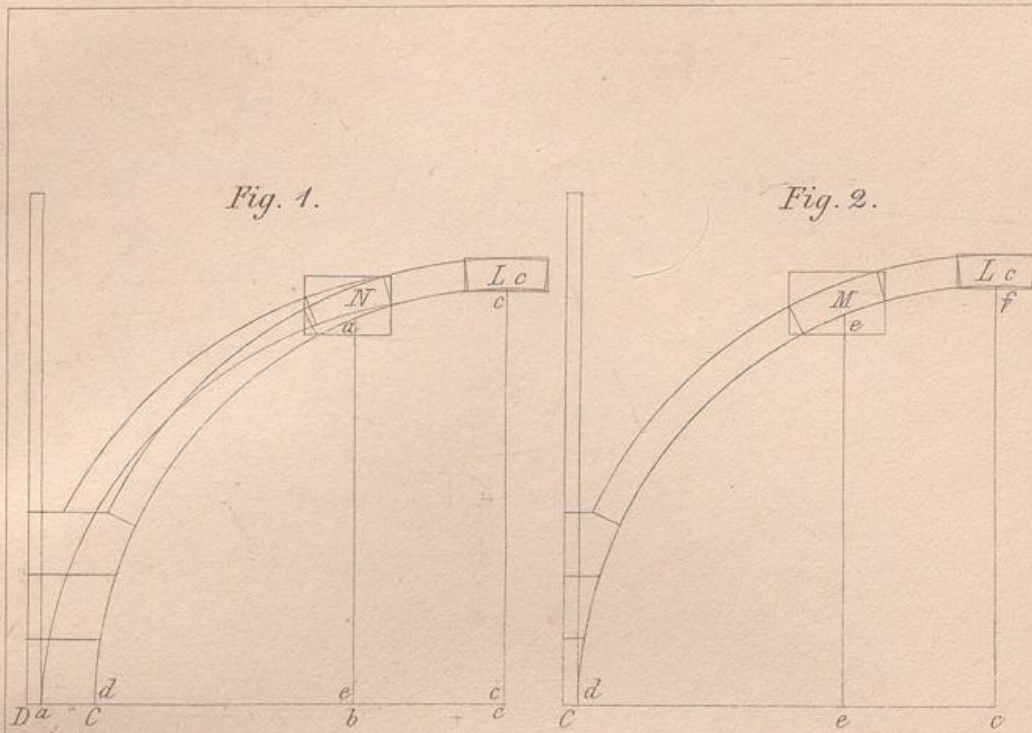


Fig. 2.

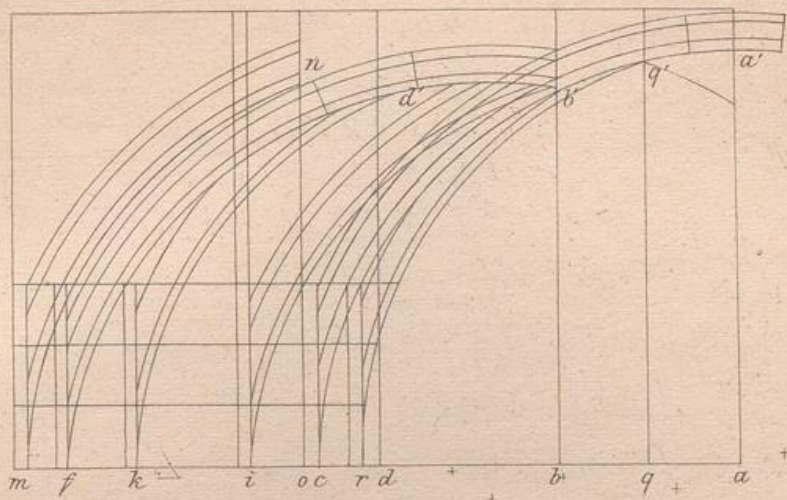
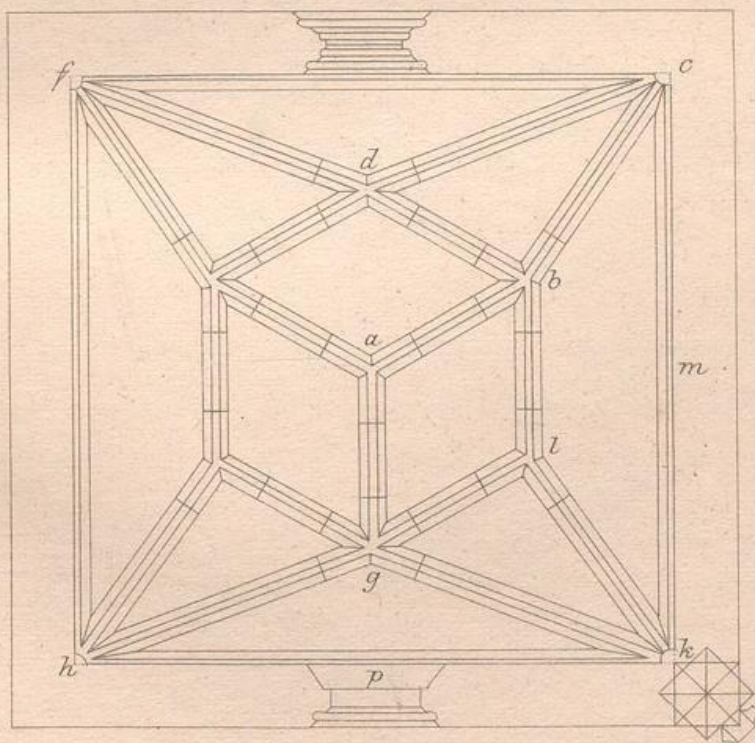
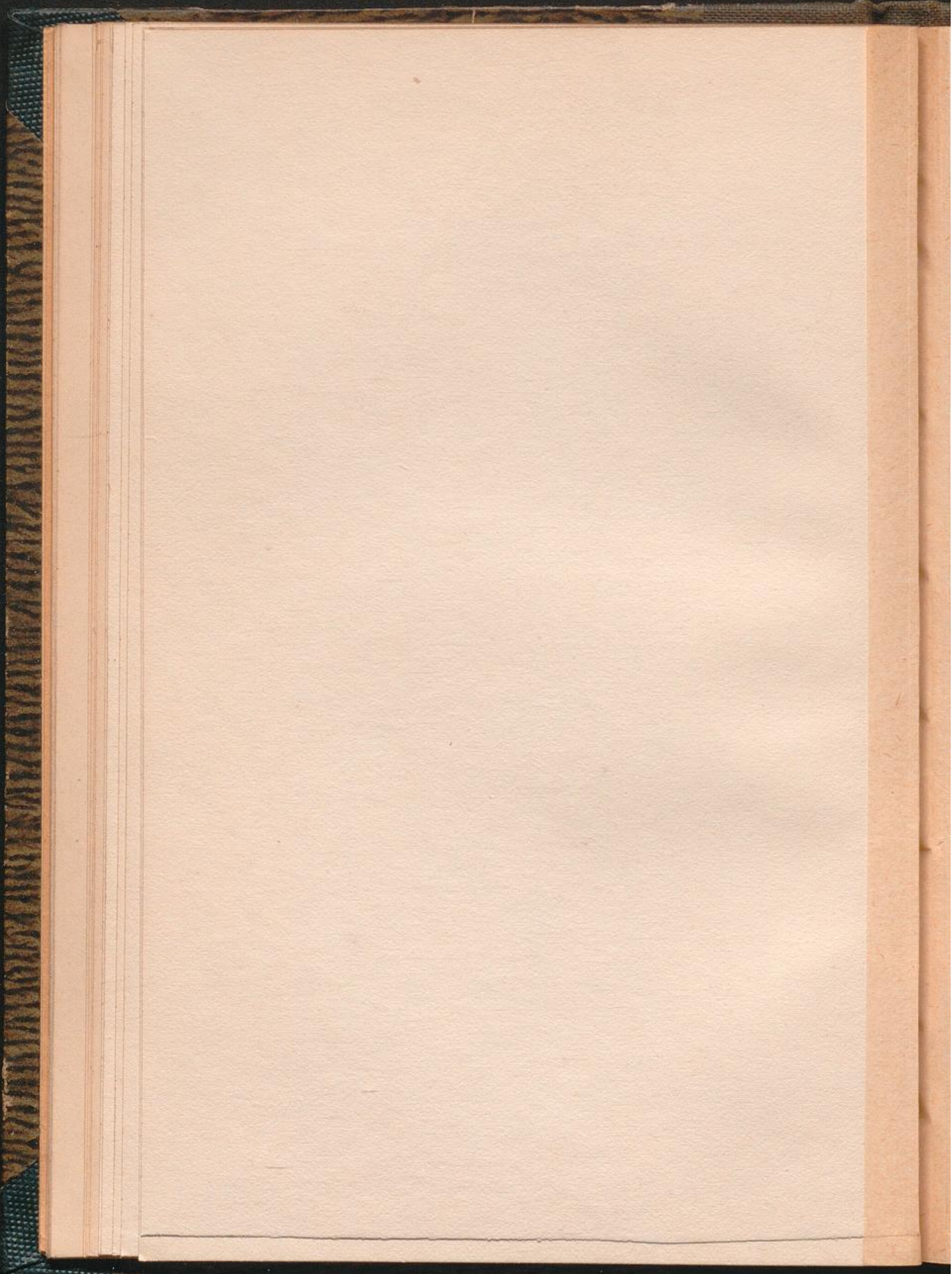
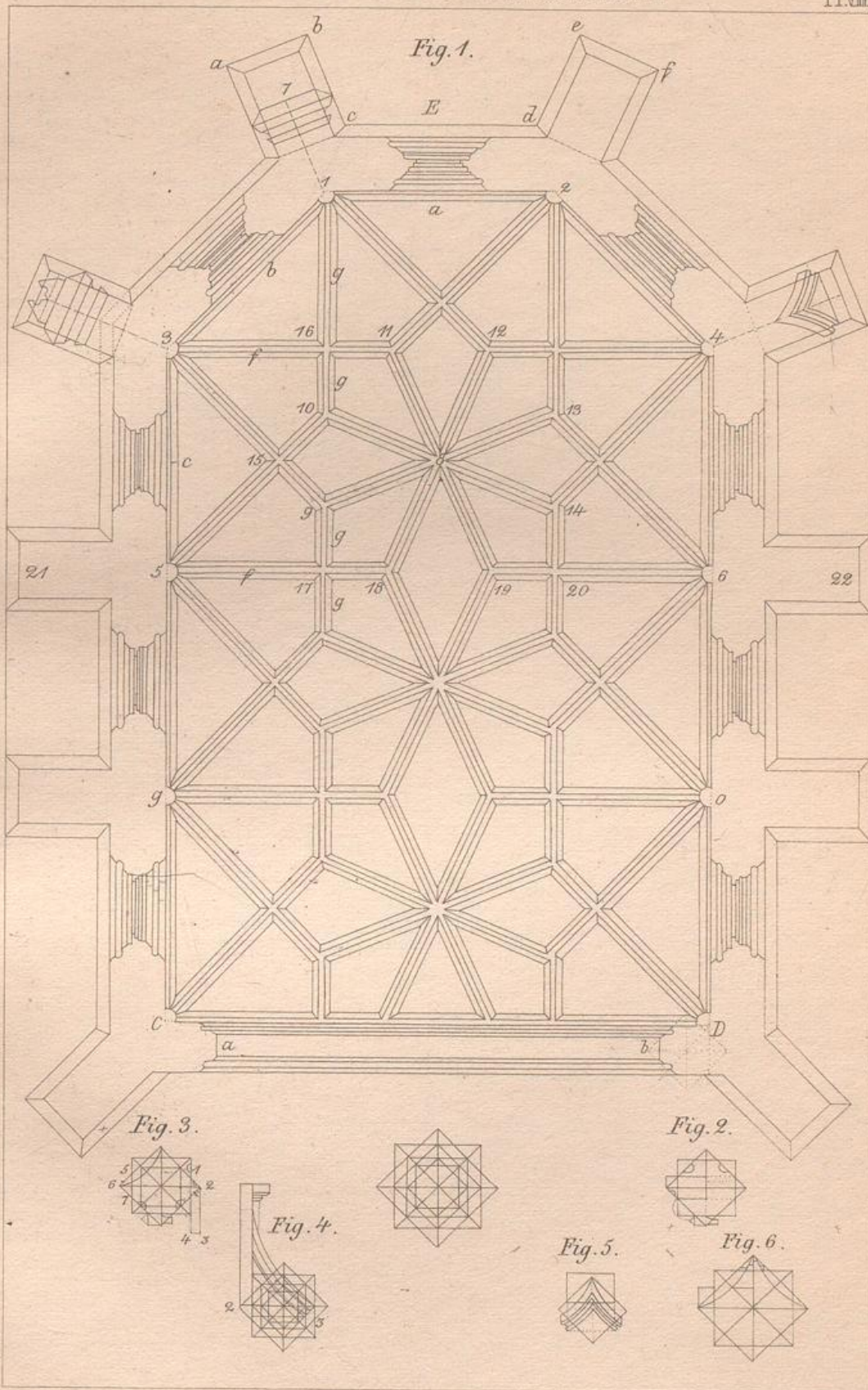


Fig. 1.







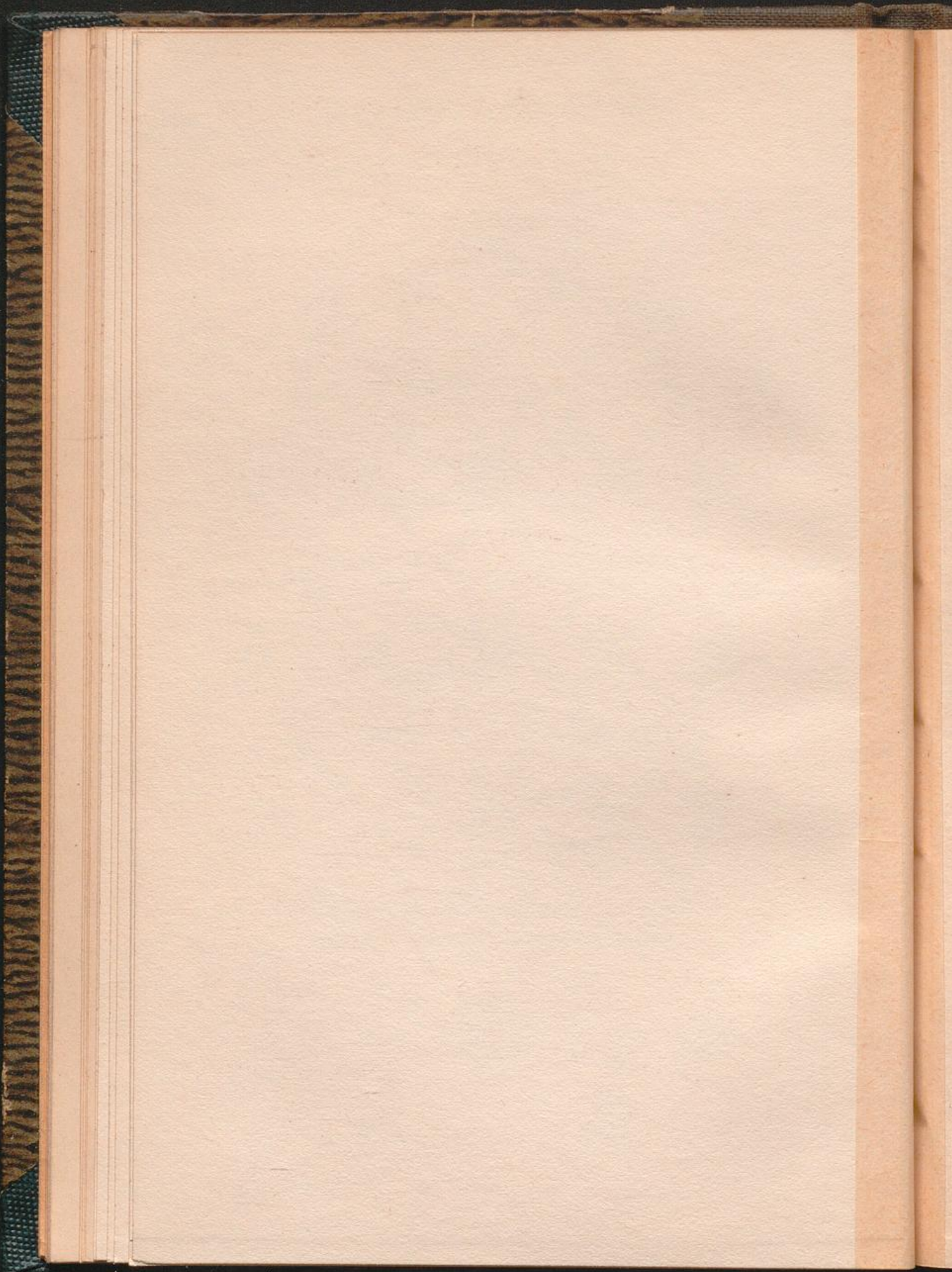


Fig. 3.

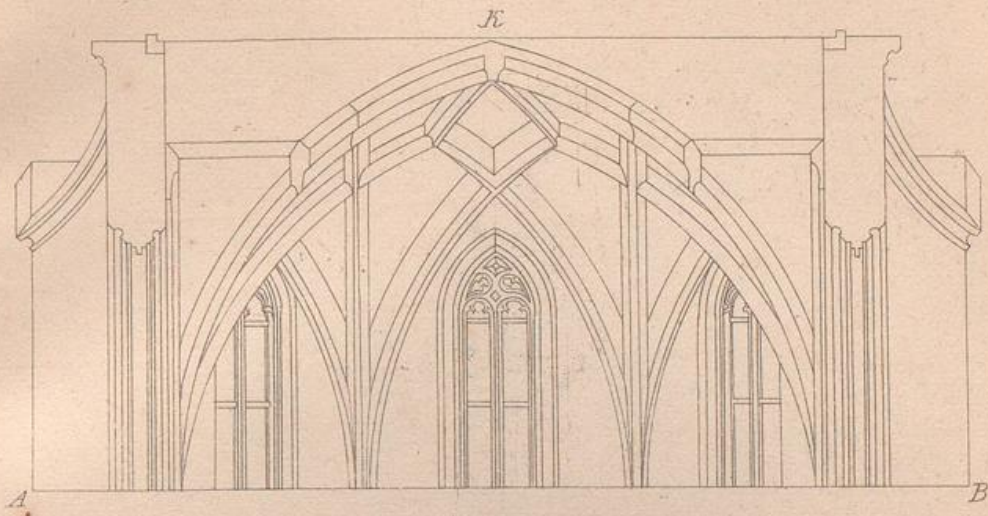


Fig. 2.

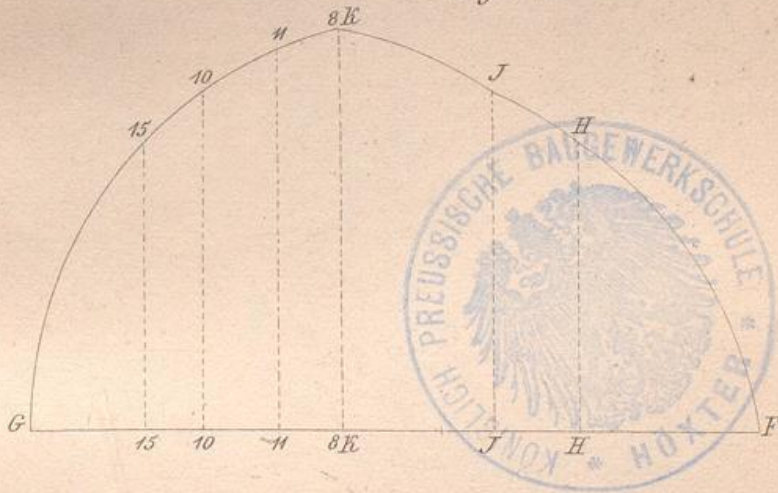


Fig. 1.

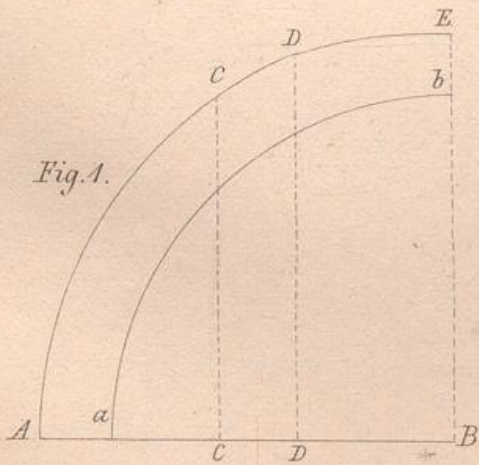
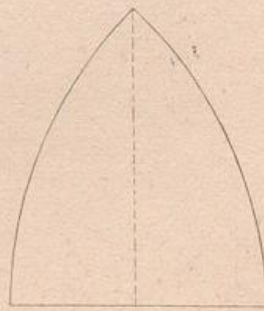
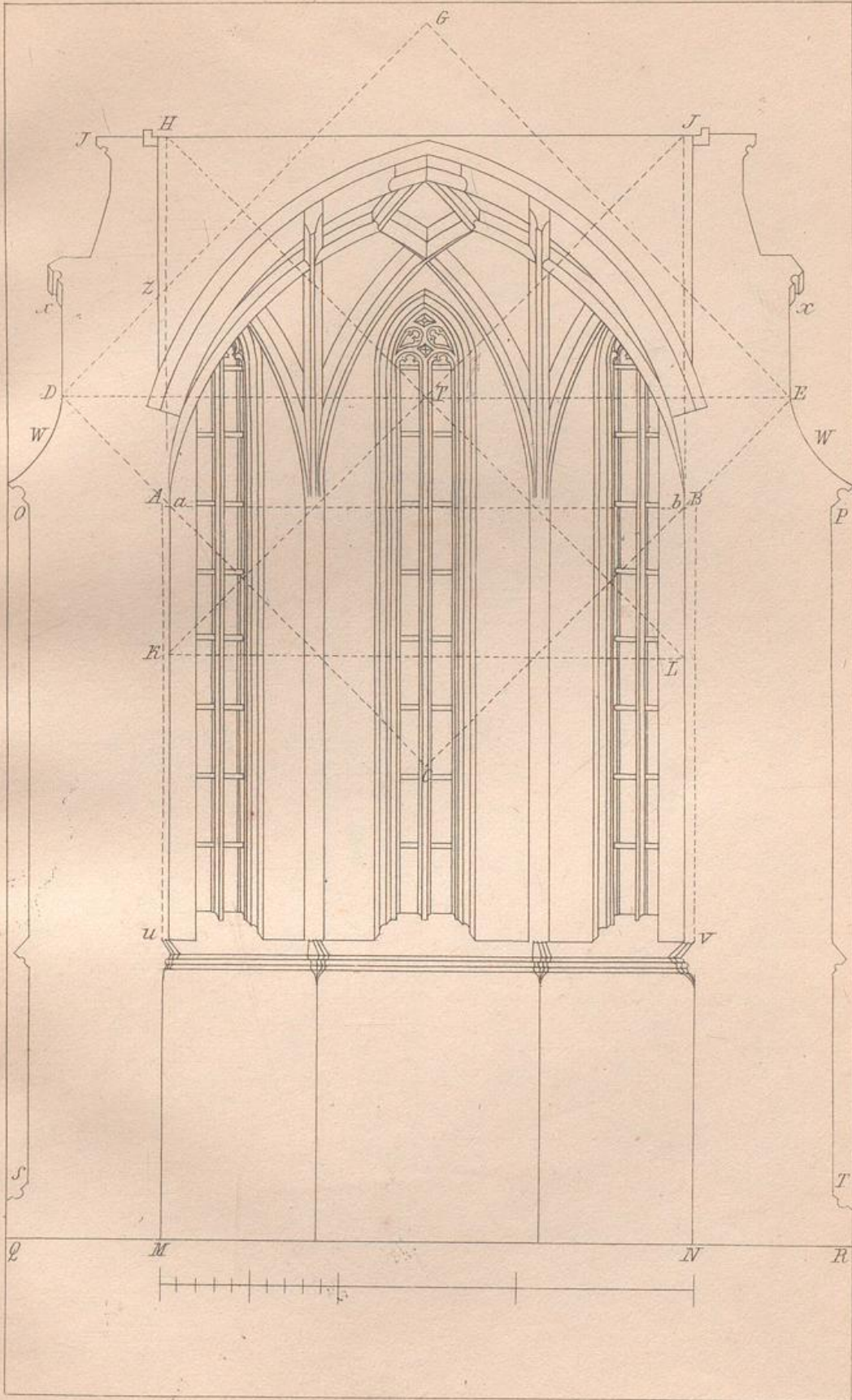
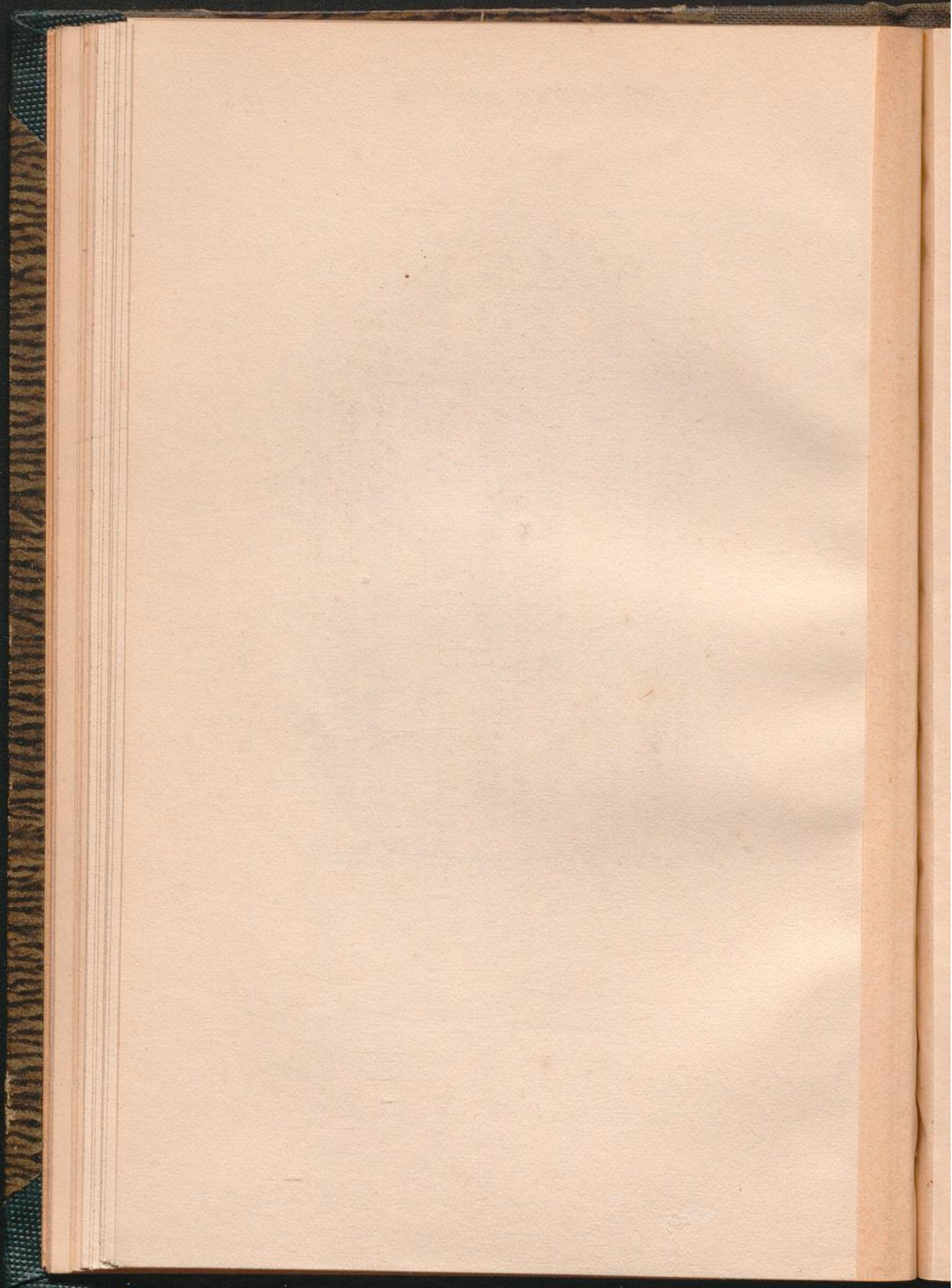
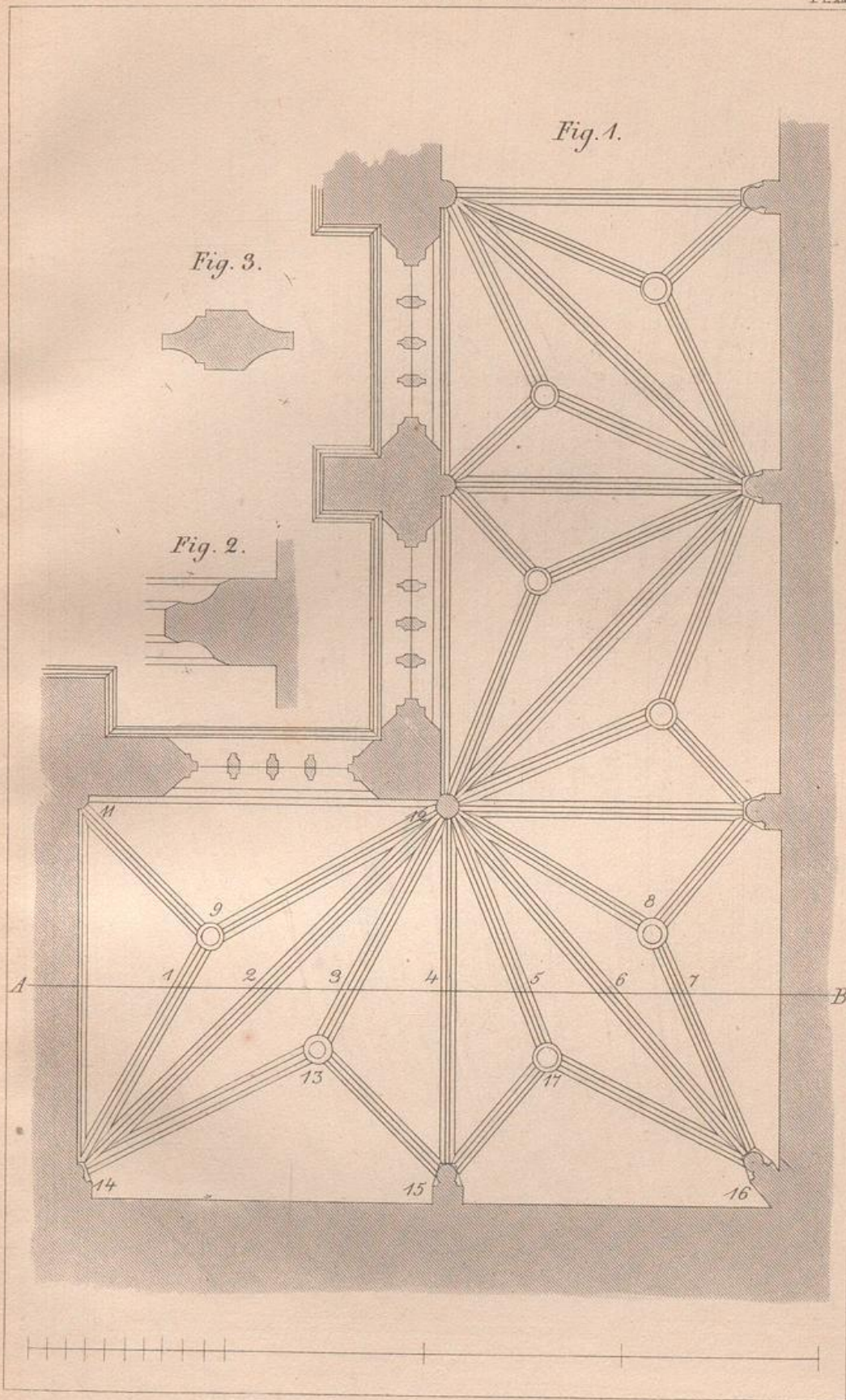


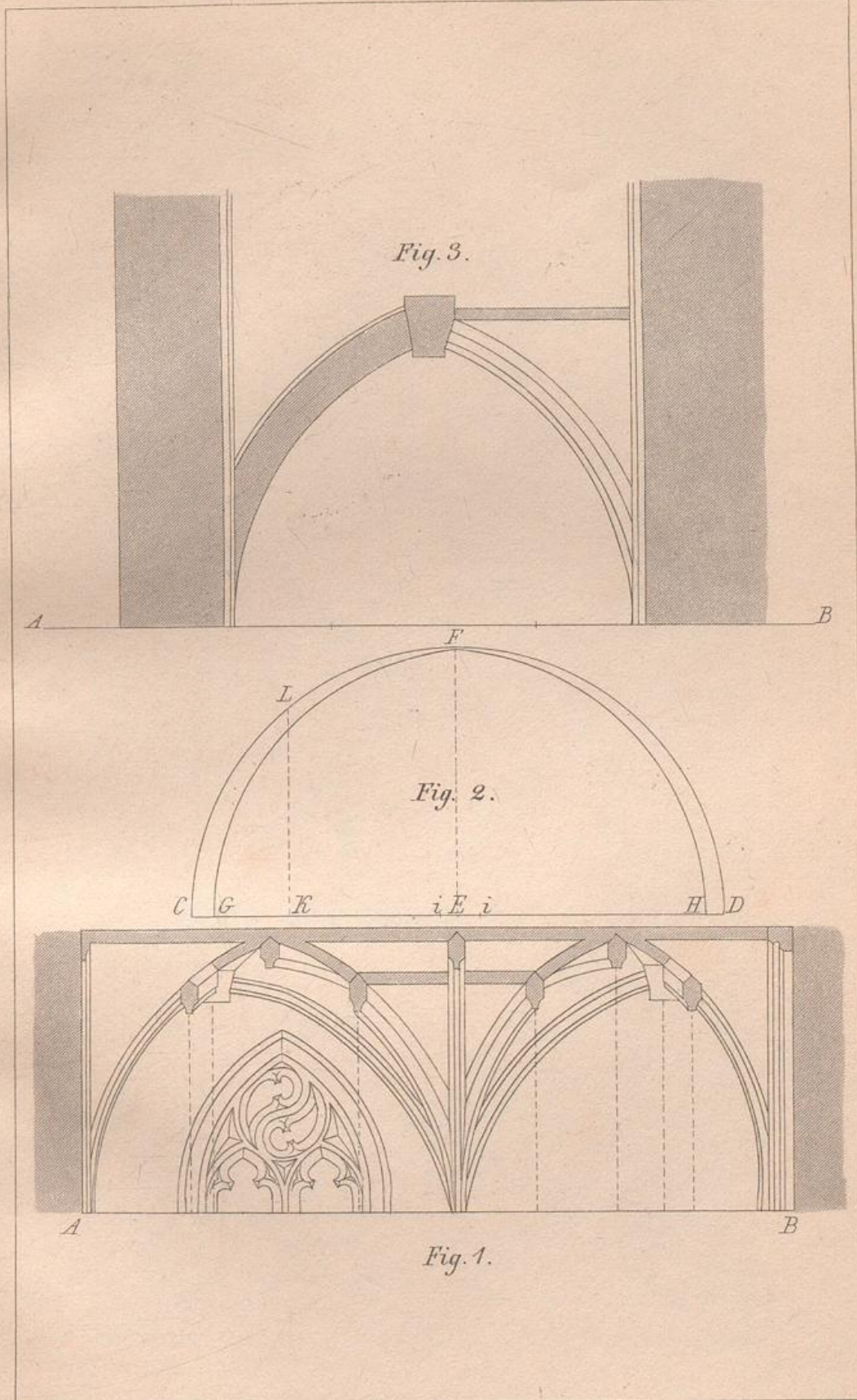
Fig. 4.

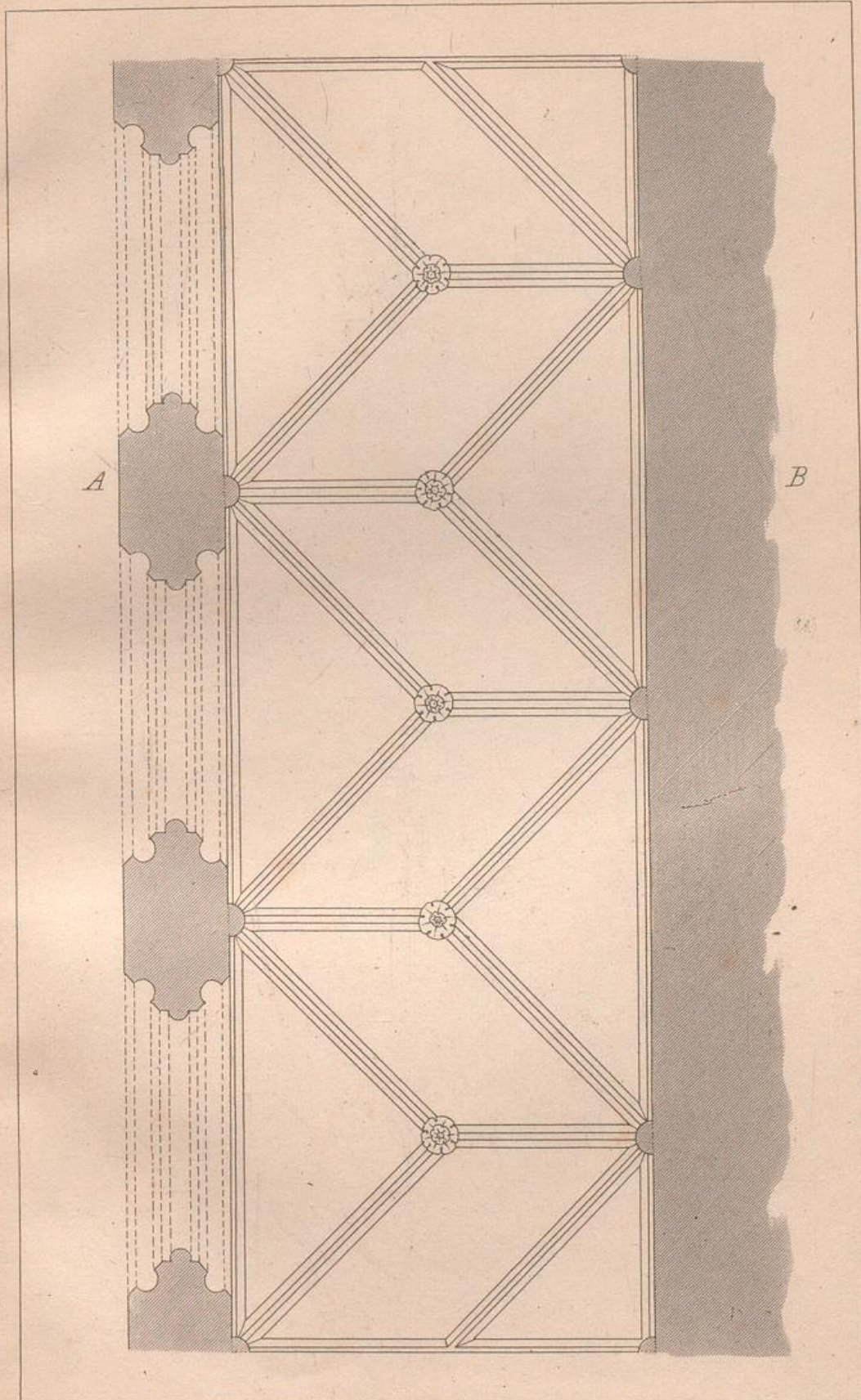


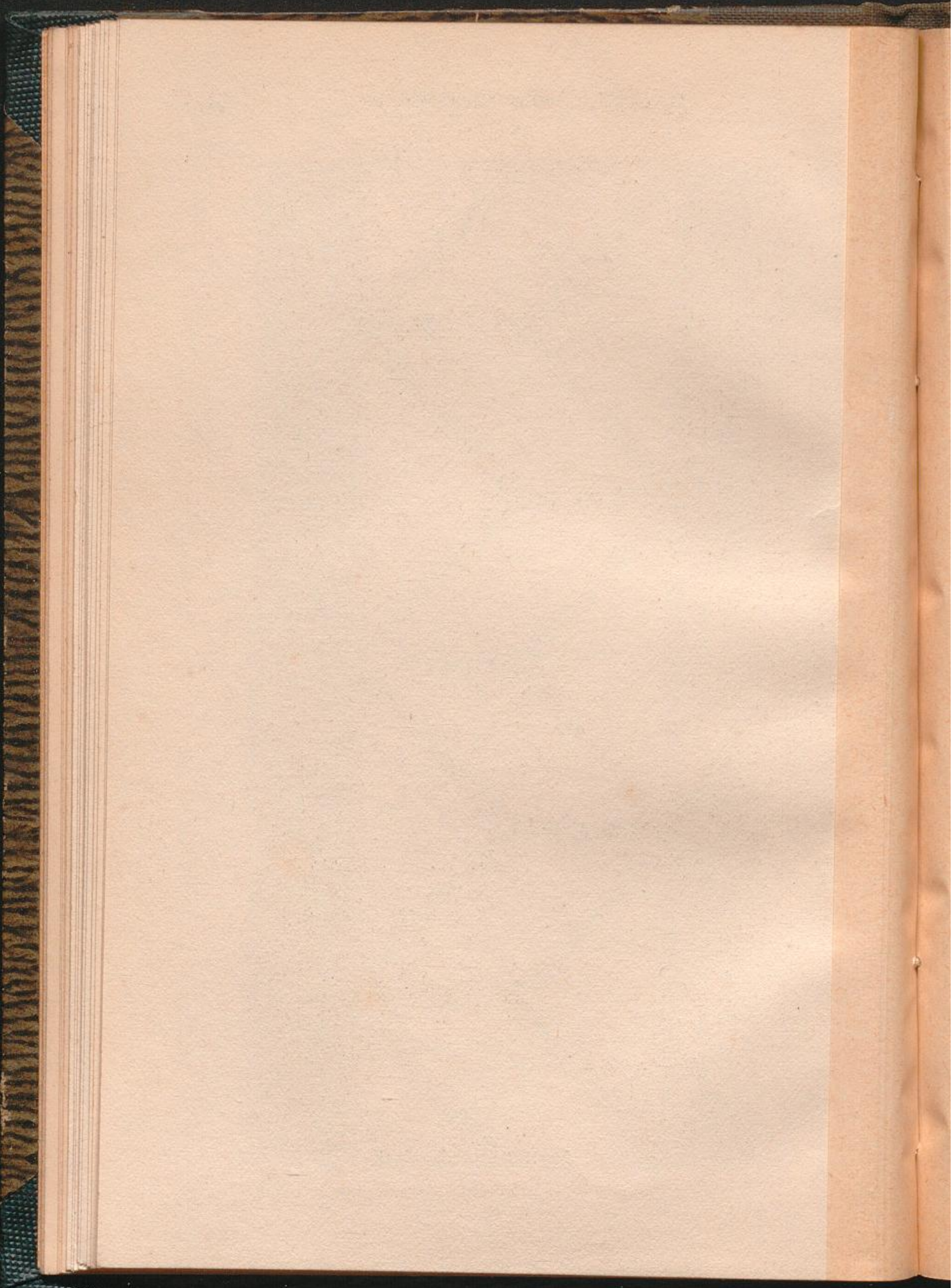


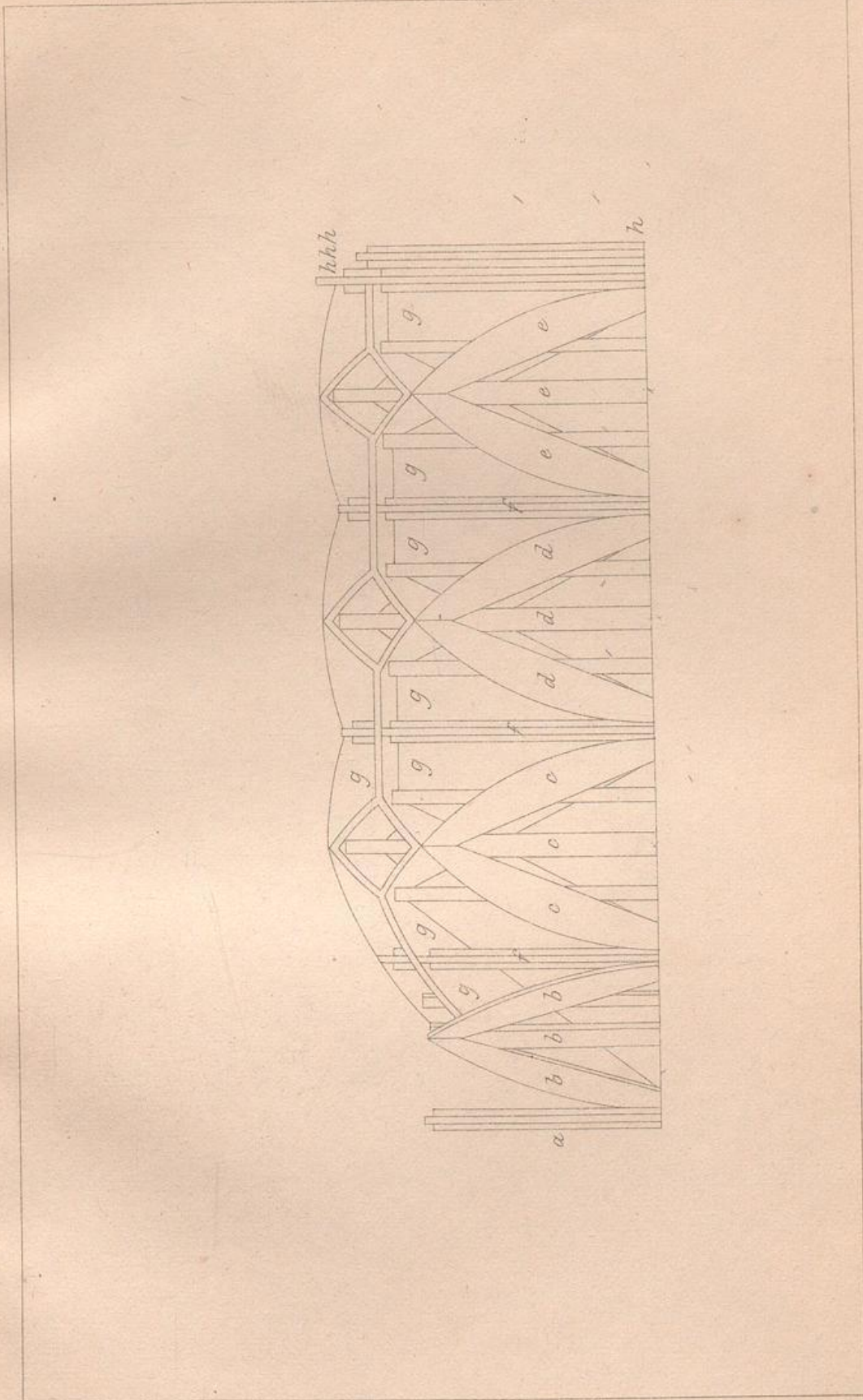


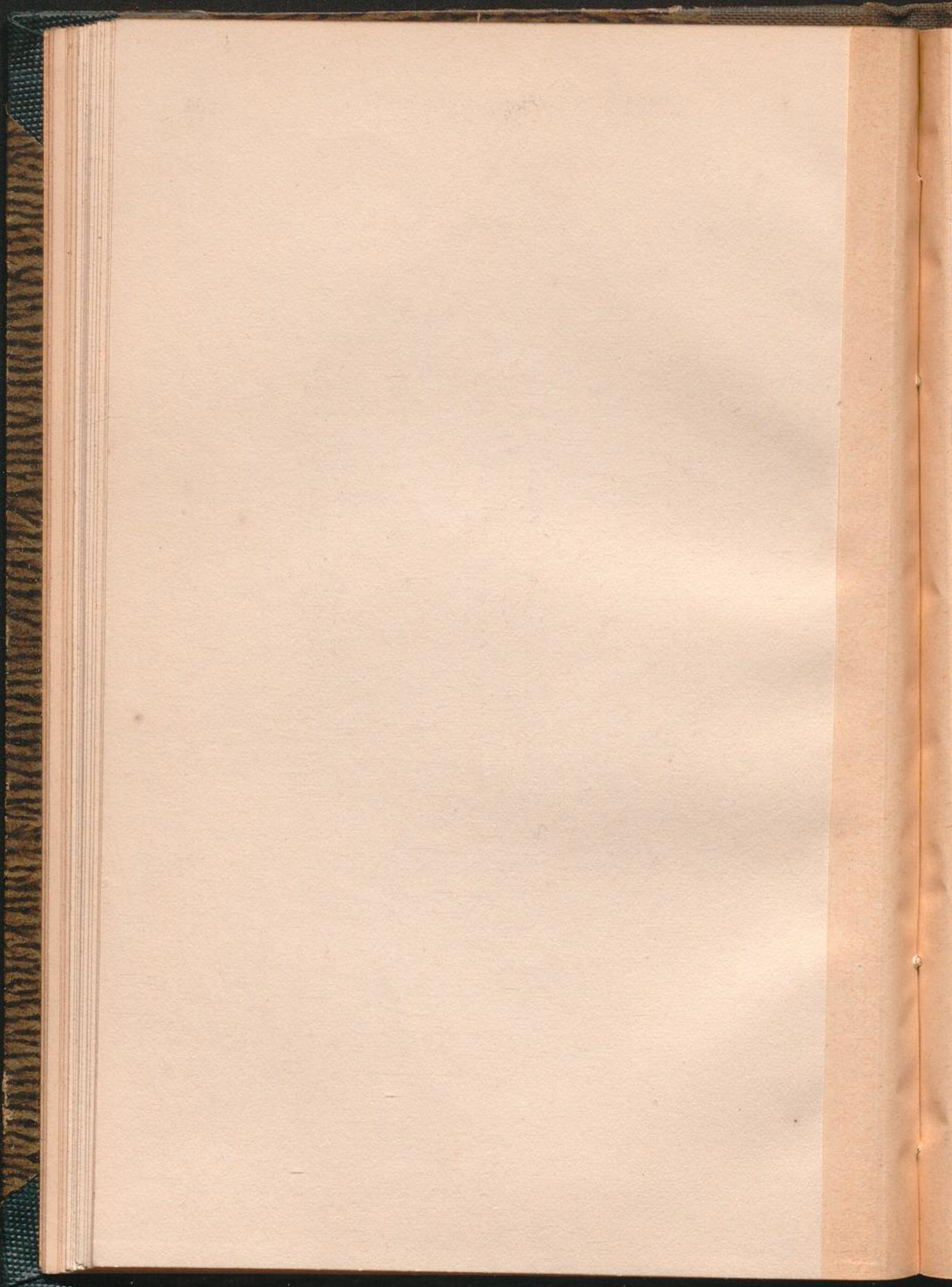


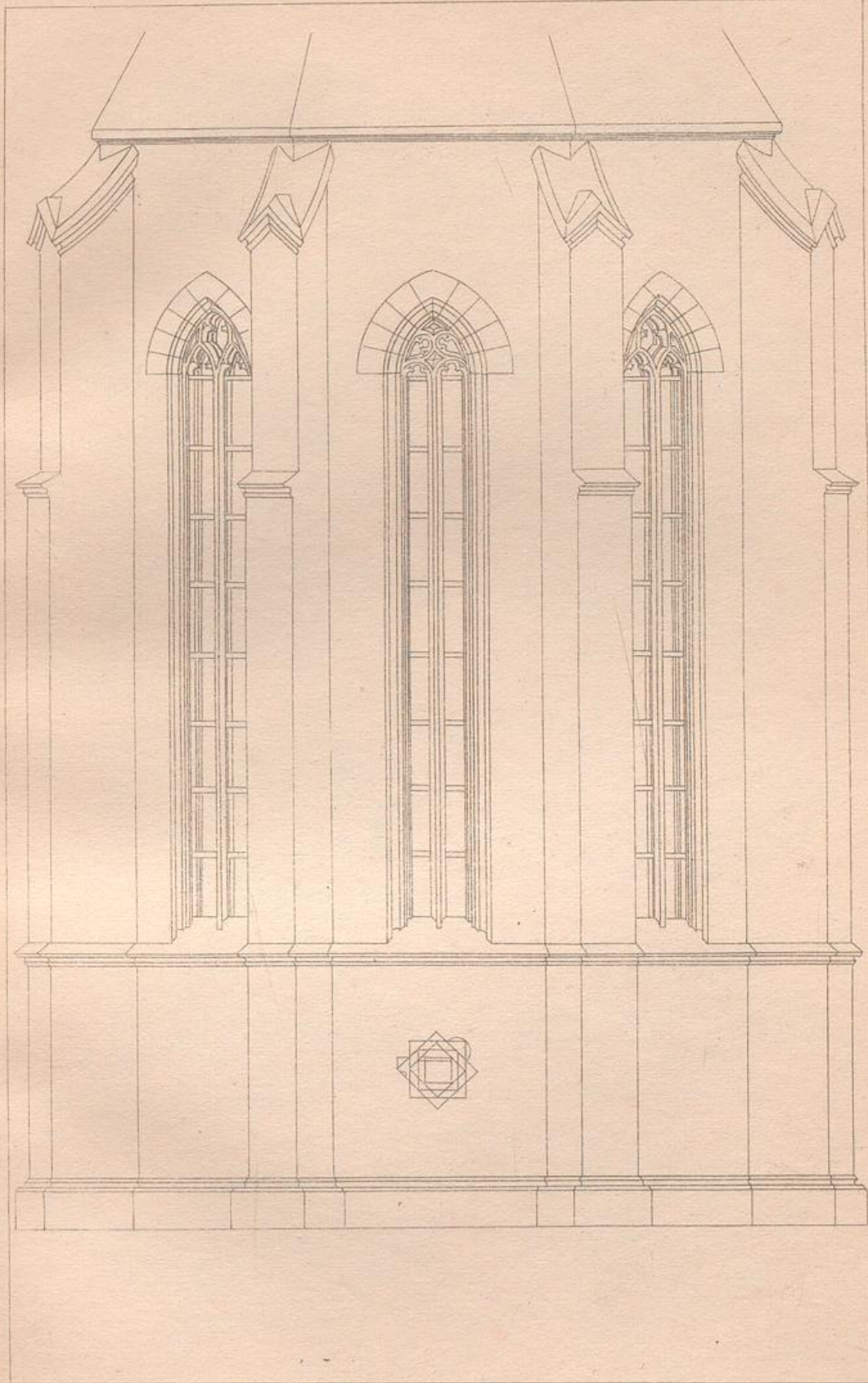


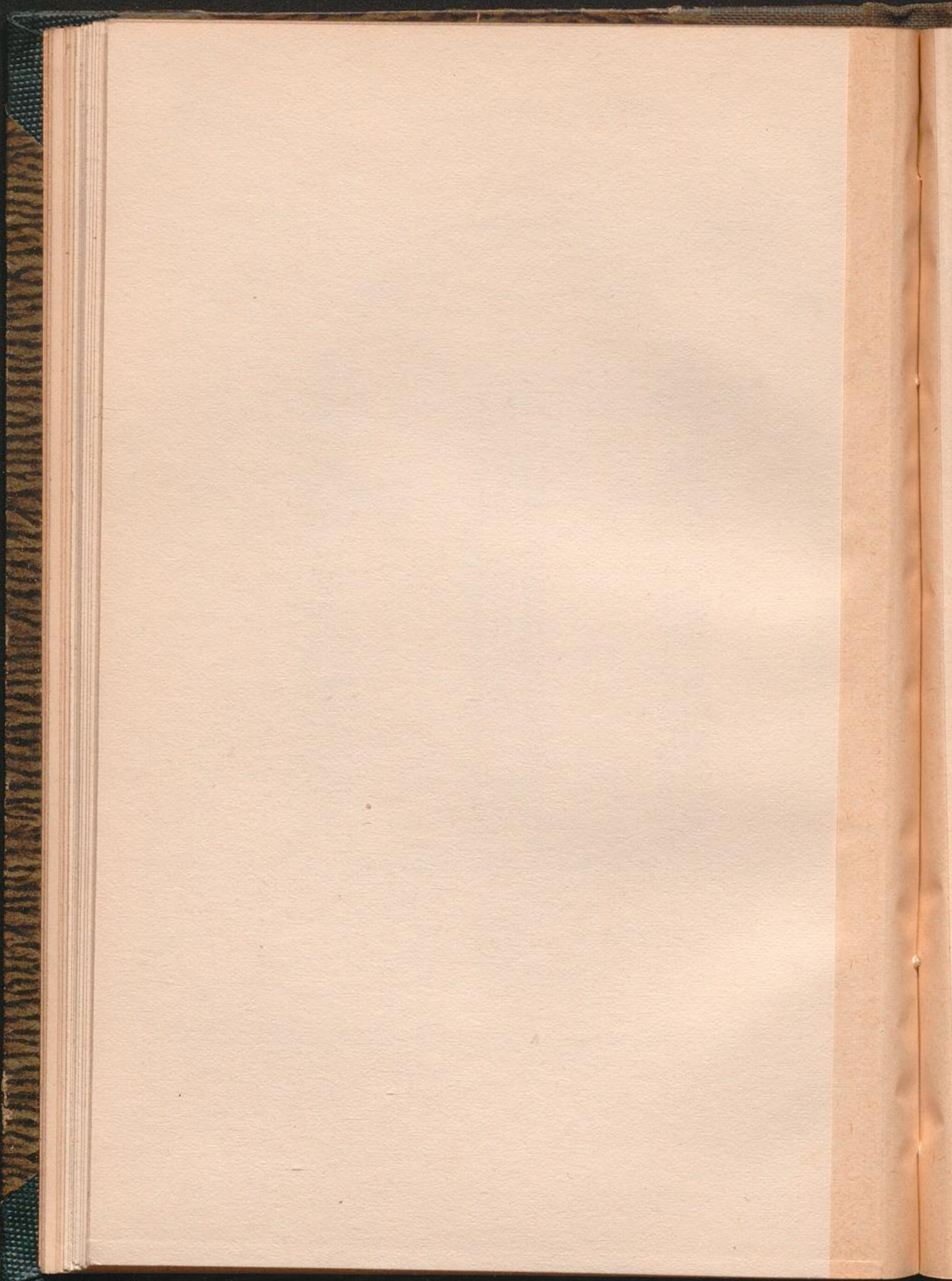


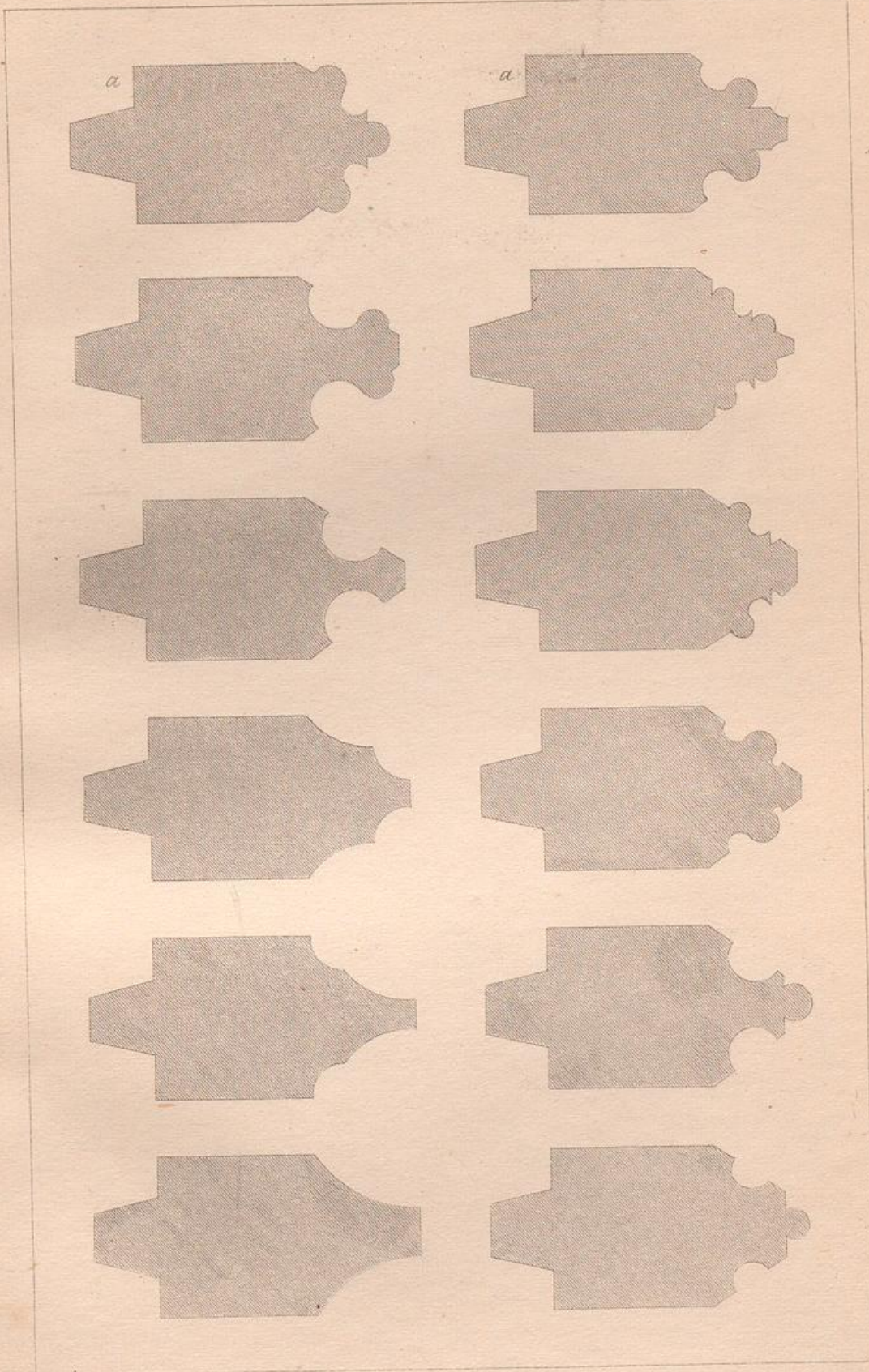


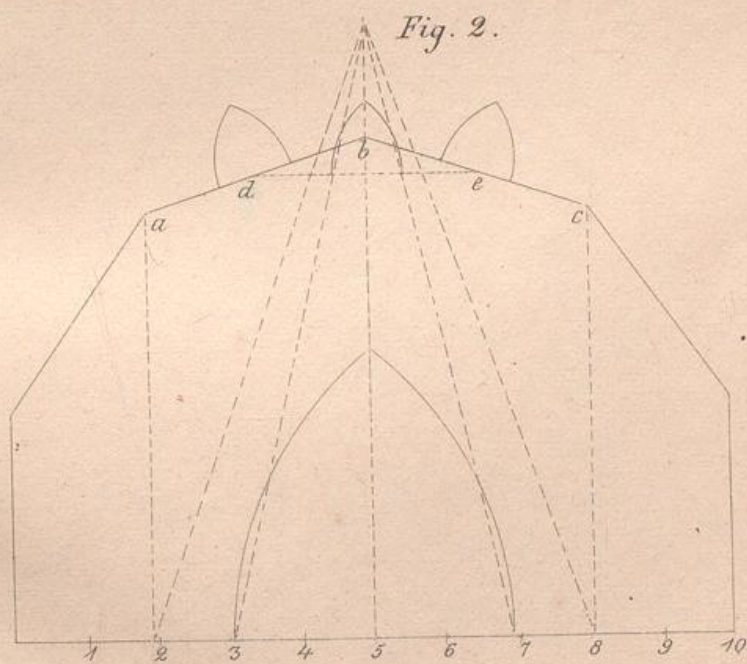
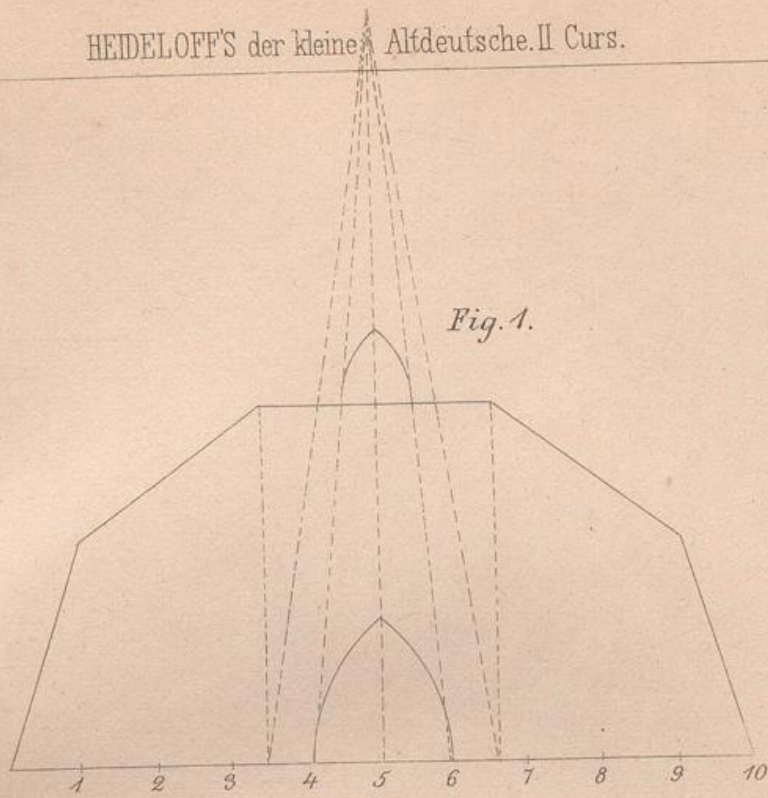












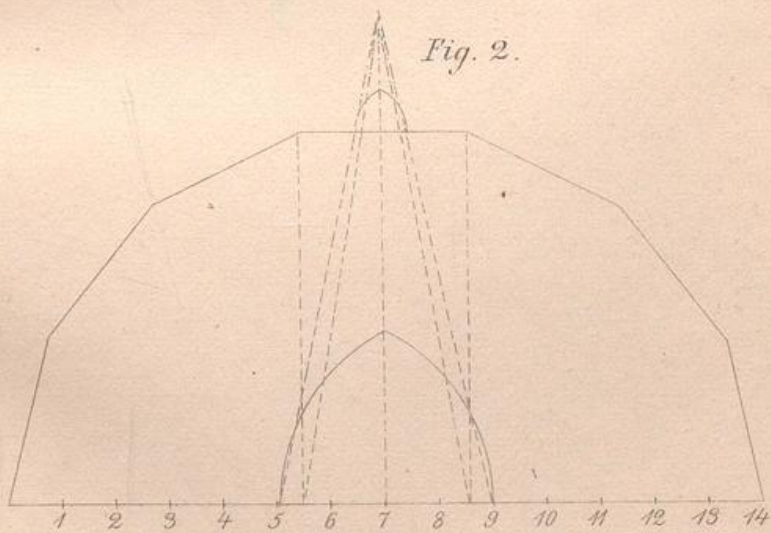
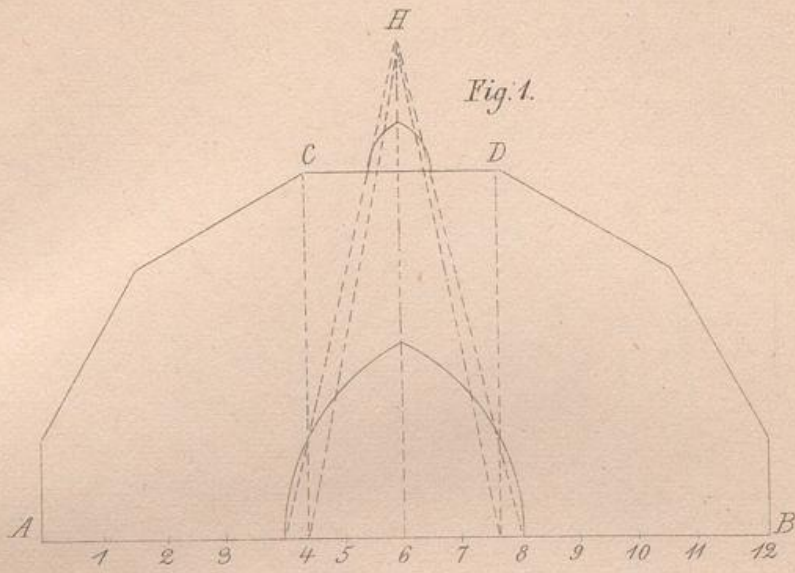


Fig. 1.

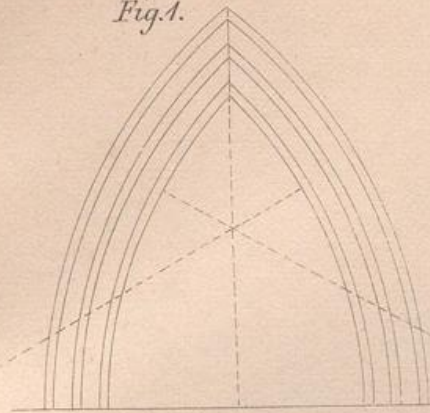


Fig. 2.

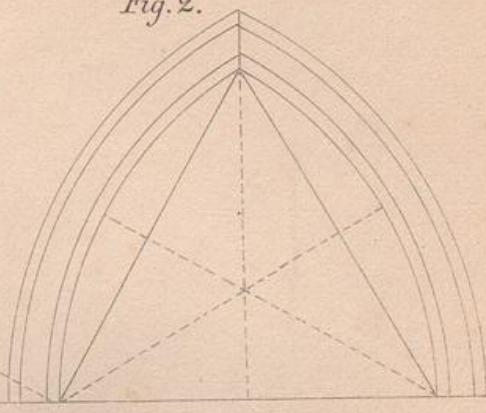


Fig. 3.

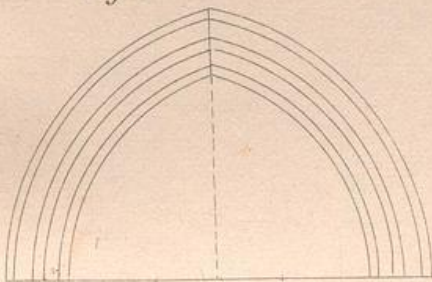


Fig. 4.

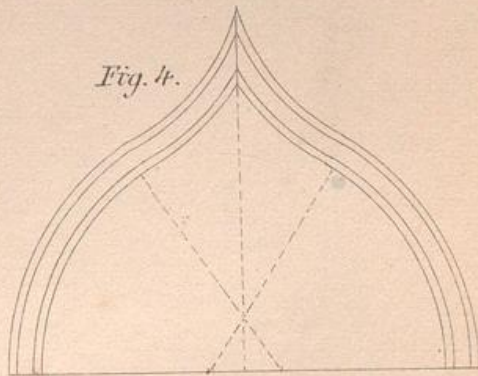


Fig. 5.



Fig. 6.

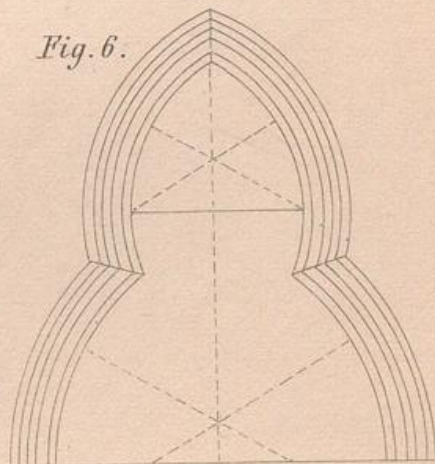


Fig. 4.



Fig. 5.

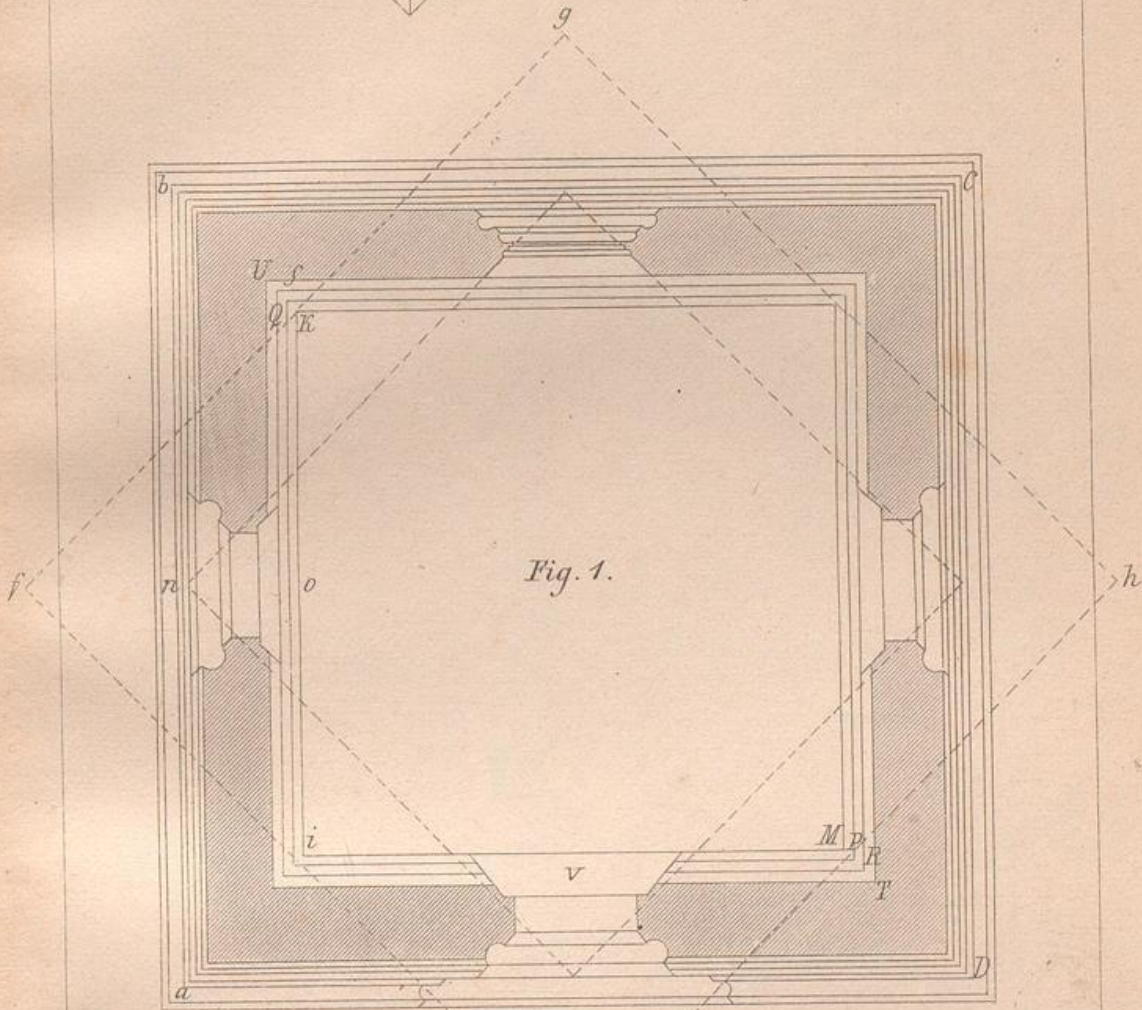


Fig. 1.

Fig. 2.

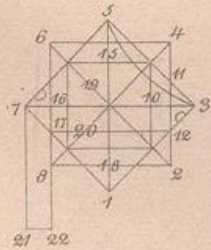


Fig. 3.

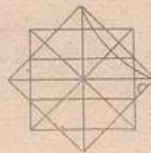


Fig. 1.

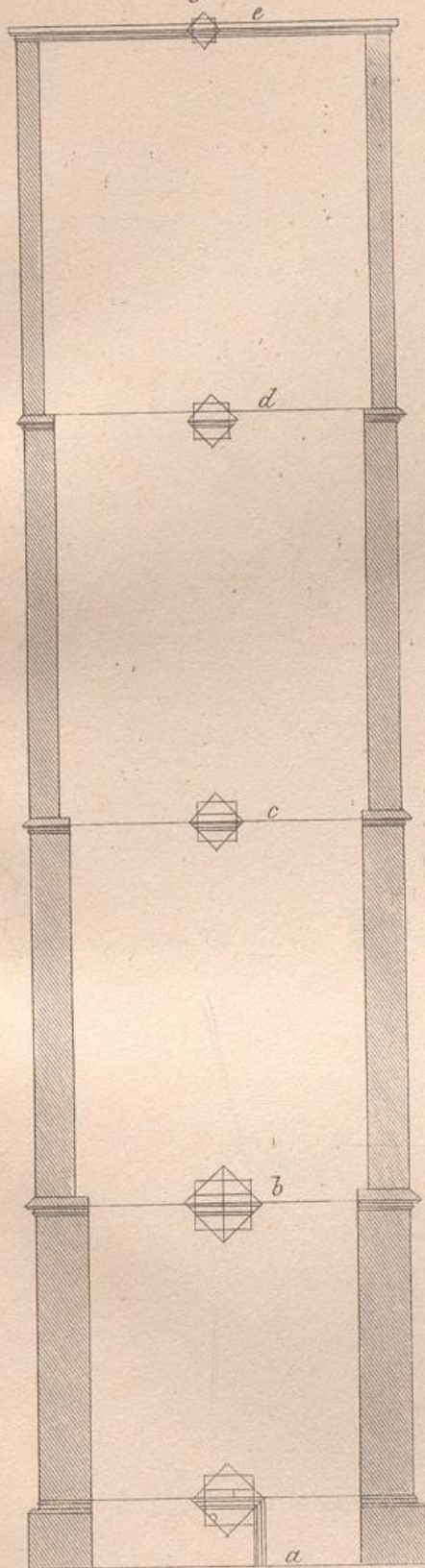


Fig. 2.

