



Picturesque America; or, the land we live in

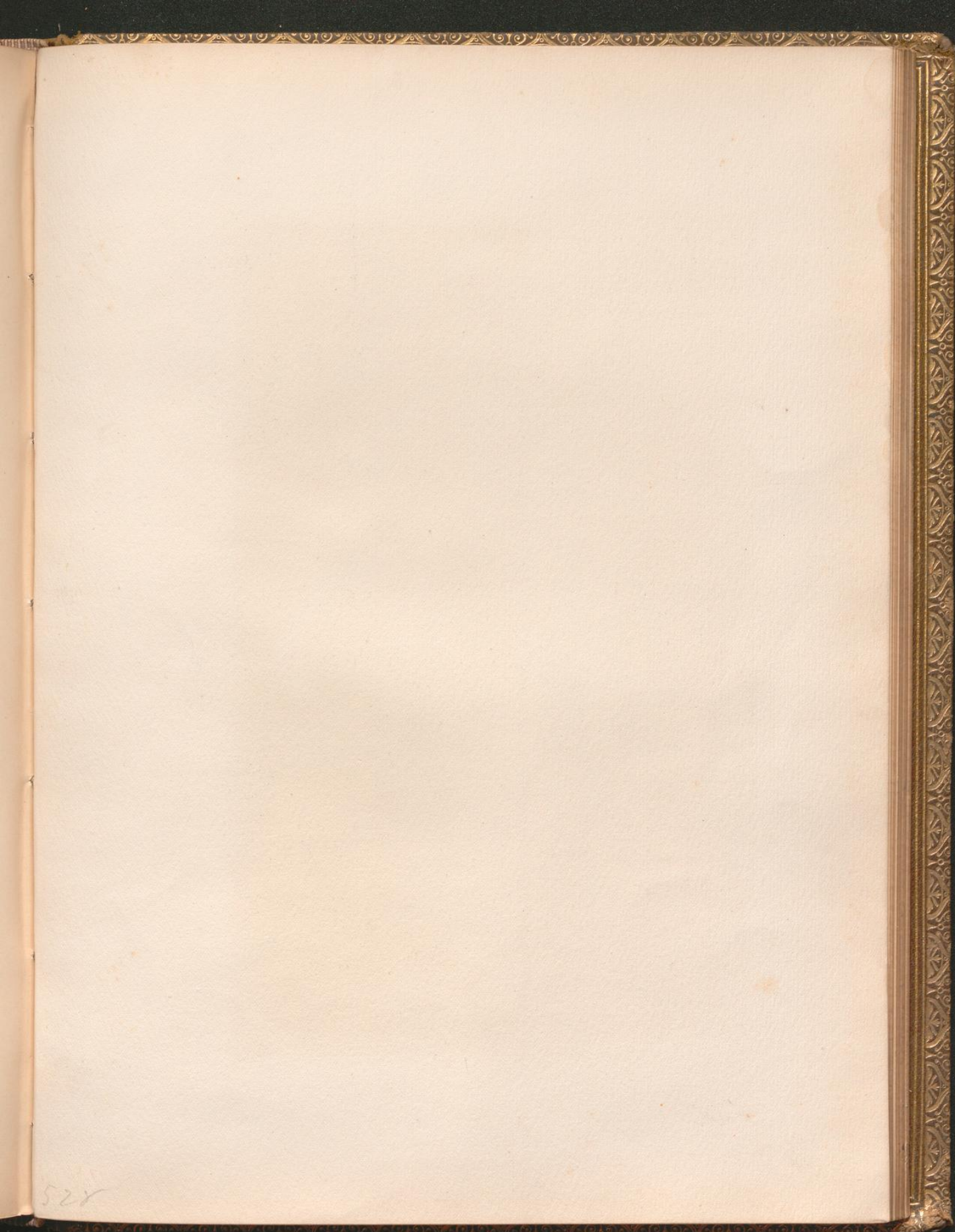
a delineation by pen and pencil of the mountains, rivers, lakes, forests, water-falls, shores, cañons, valleys, cities, and other picturesque features of our country ; with illustrations on steel and wood, by eminent American artists

Bryant, William Cullen

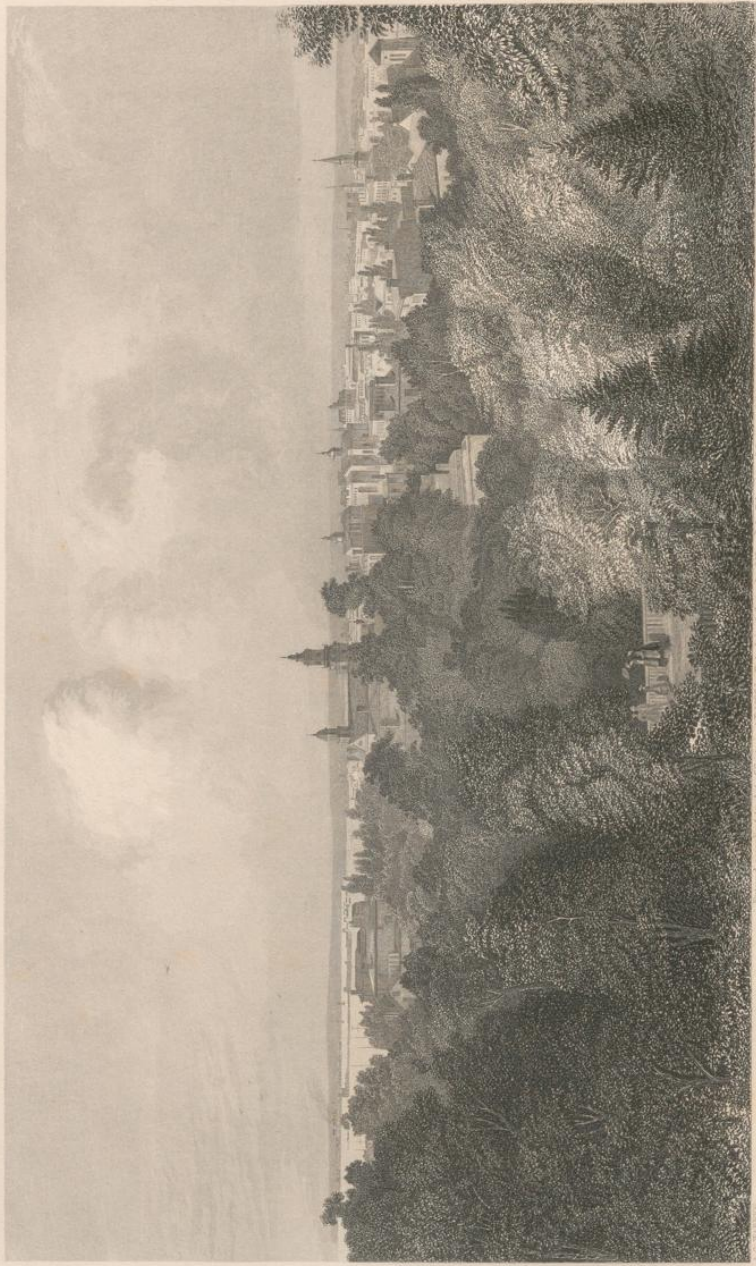
New York, 1874

City Of Milwaukee.

[urn:nbn:de:hbz:466:1-65884](https://nbn-resolving.org/urn:nbn:de:hbz:466:1-65884)



528



Engraving according to the drawing by J. J. Applegate, taken in the office of the Librarian of Congress, Washington.

City of Milwaukee

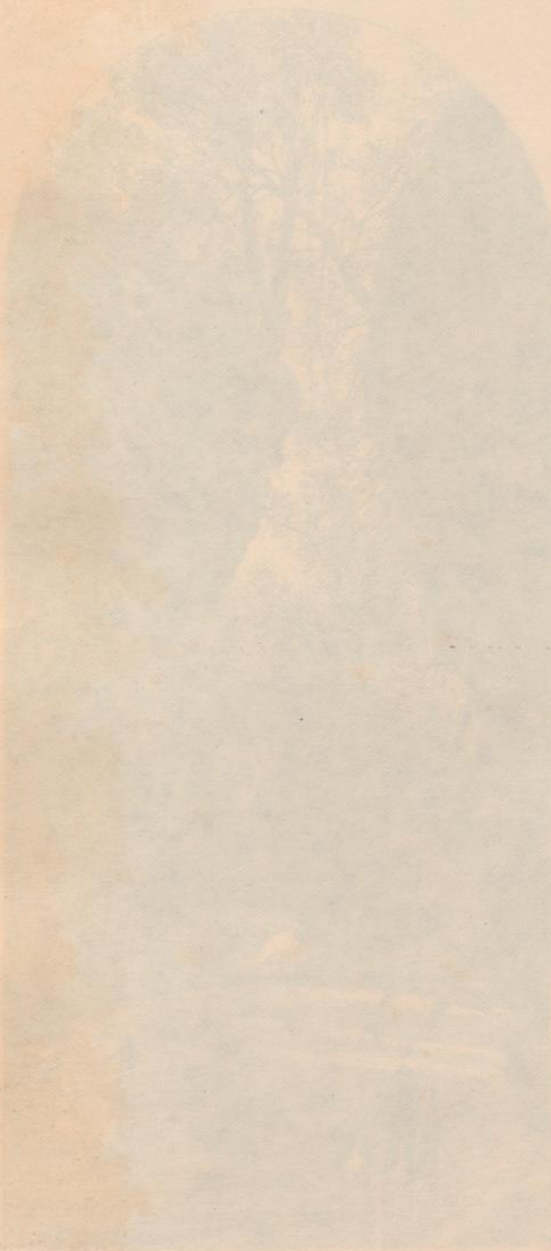
New York: J. Appleton & Co.

A GLANCE AT THE NORTHWEST.

WITH ILLUSTRATIONS BY ALFRED R. WADE.

WISCONSIN could not generally regard the beauties of their State, and submitively listen to a good deal of random talk about her backwoods and prairie wastes, that people who have not been there ignorantly refuse. For to purchase, when you are planning a summer's vacation, you should first visit the most frequented routes of travel, you cannot do better than spend a week or longer to a journey that includes many most picturesque scenes than these backwoods and prairie wastes. Go round the great lakes for instance; visit the Voyageur at one of the lake ports — the Menominee, or Sheboygan — and your way to the Wisconsin River by the Central Wisconsin Route.

The guide-books and gazetteers have not little to say on the subject. The notes that you will learn from these, and the natural features peculiar to the State is the abundance of its elevation and its shape of its square, which is neither mountainous nor hilly, but gently undulating. The river Wisconsin has its entire course within the State, and



By Alfred R. Wade.

