



Muster-Sammlung für Bautischler

Eine nach verschiedenen Stylen geordnete und vorzüglich aus Münchens Neubauten entnommene Sammlung von Thoren, Thüren, Fenstern, Vorbauen, Ladenschränken, Fußböden, Treppen, Canzeln, Altären [et]c. [et]c.

Krug, Eduard

München, 1841

Byzantinischer Styl.

[urn:nbn:de:hbz:466:1-66177](https://nbn-resolving.org/urn:nbn:de:hbz:466:1-66177)

Fig. 15. a

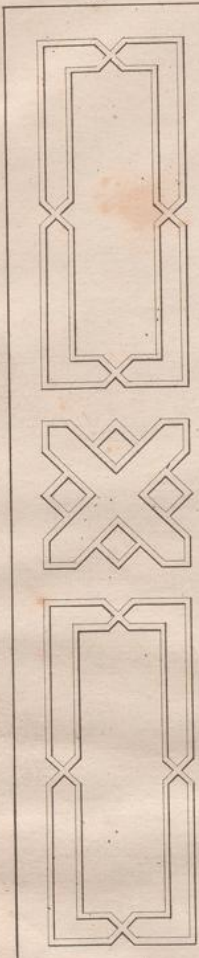


Fig. 16.

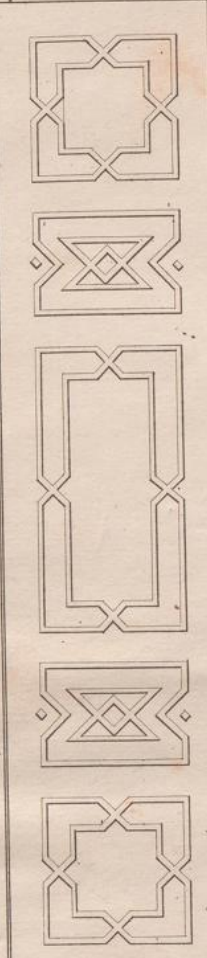


Fig. 17. a

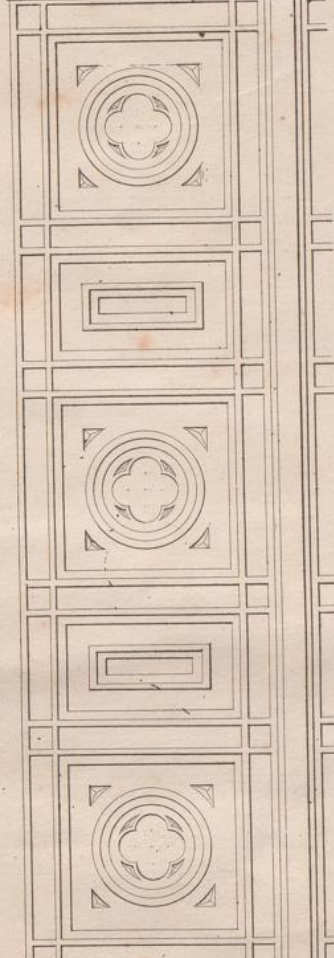


Fig. 18. a.

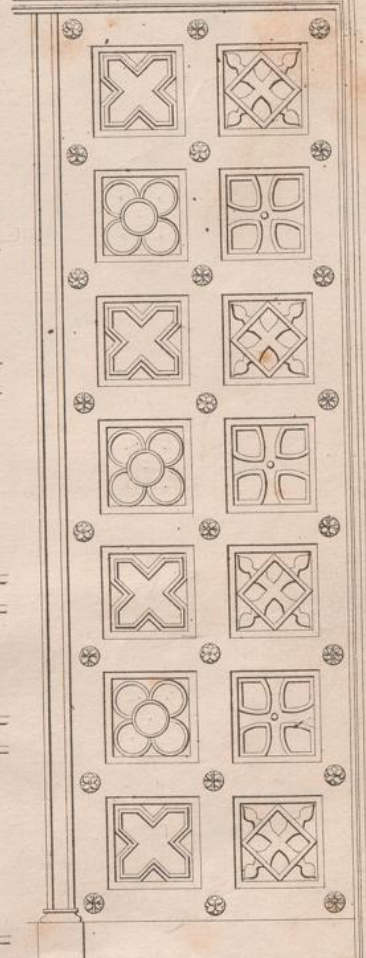


Fig. 15. b.

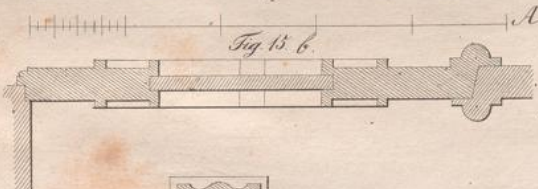


Fig. 17. c.

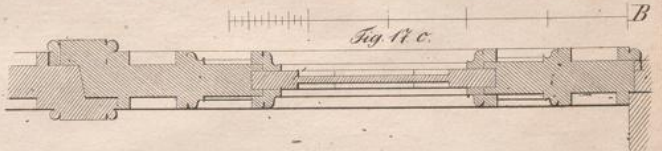
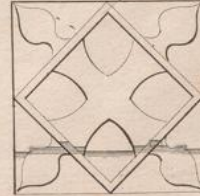
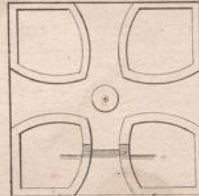
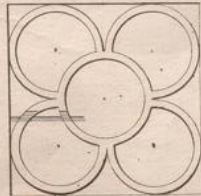
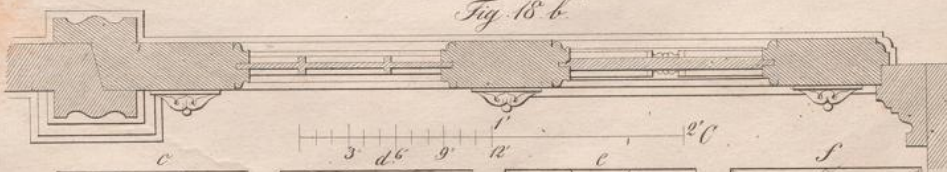


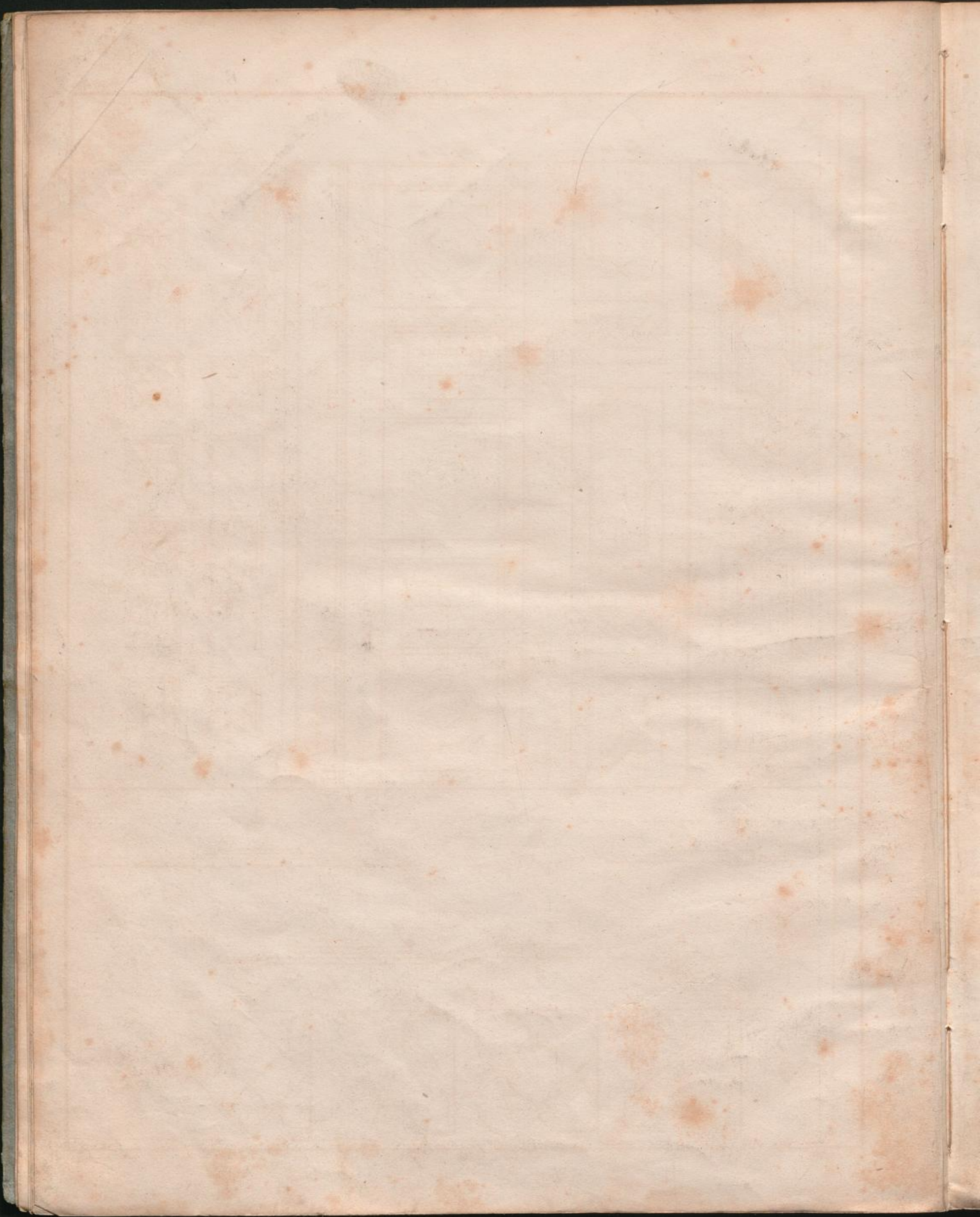
Fig. 18. b.

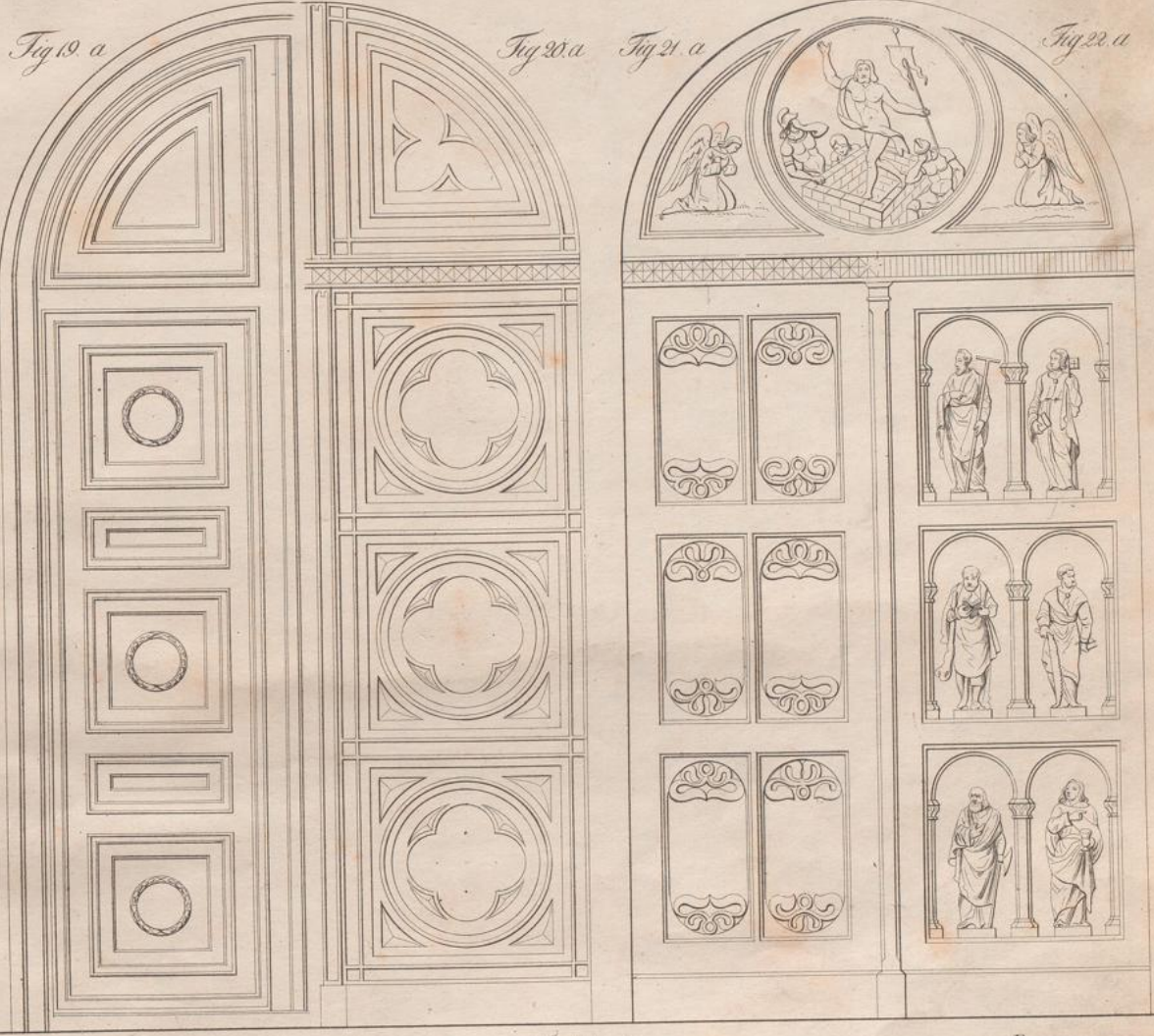


H. Wenzel fecit.

ausfinden bei Baymair u. Roller in München.

Quadrat-Werke, 18.

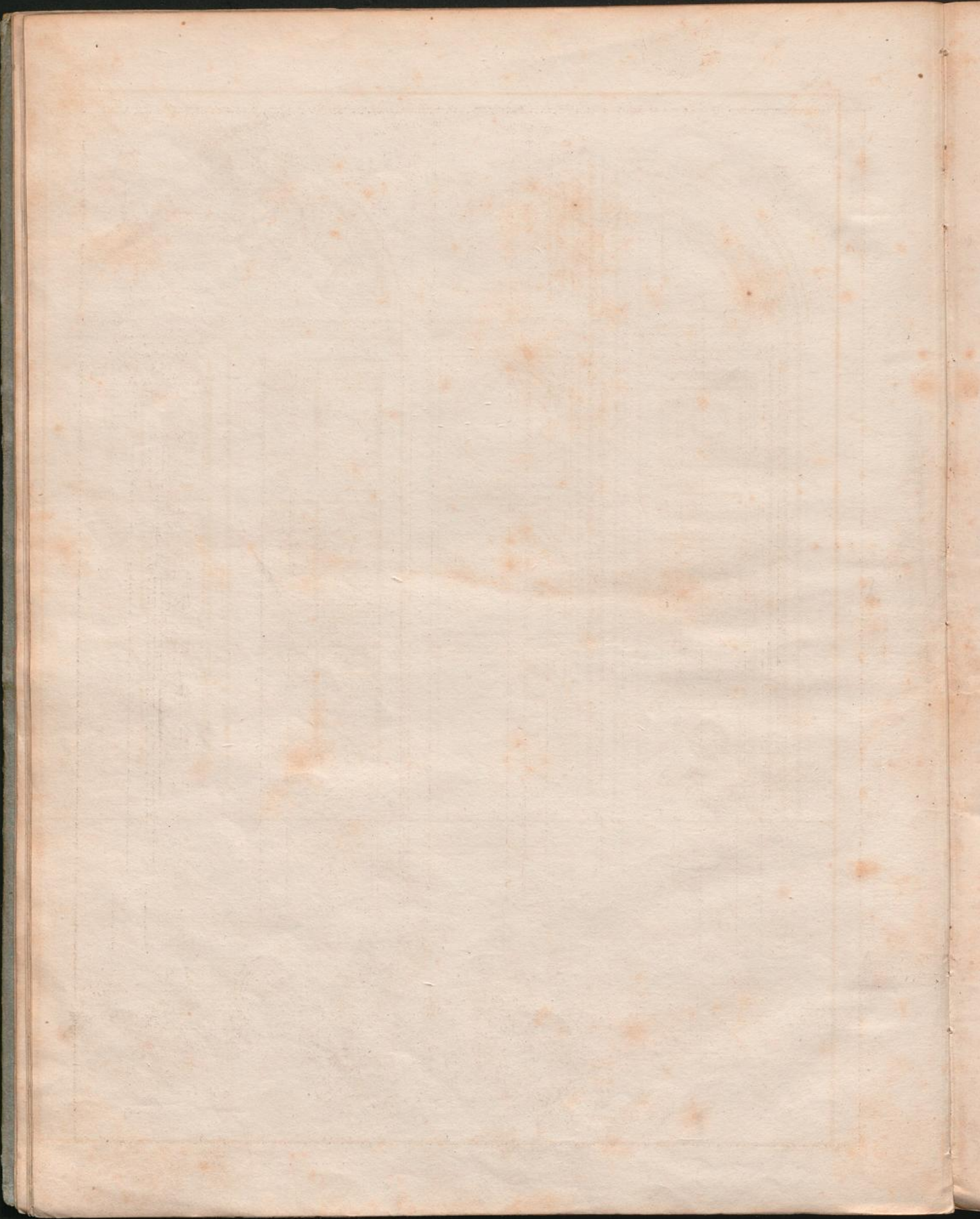


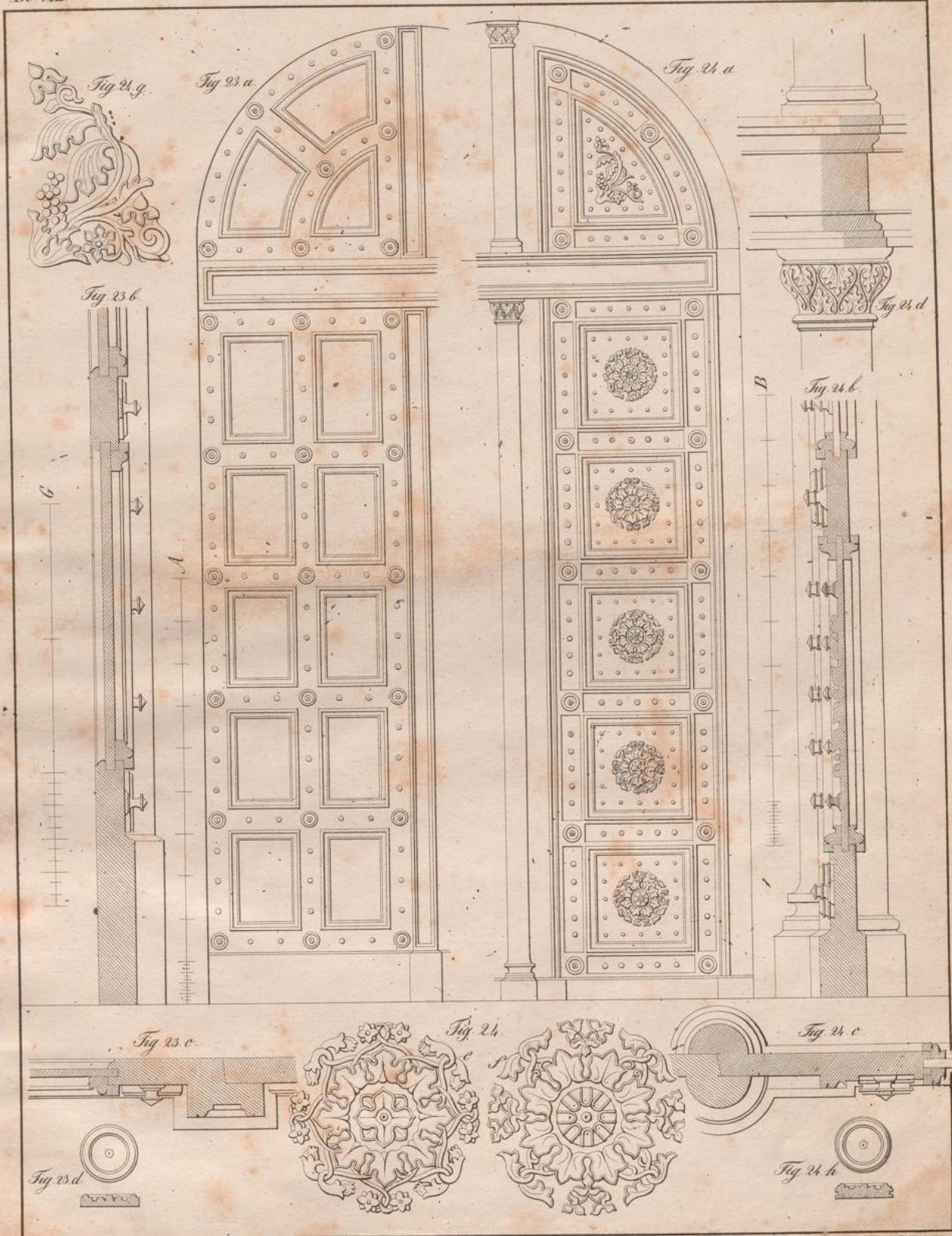


B. Kreyer fec.

im Hofen des Bergmanns u. Keller in München.

Georg Wöhring sc.





B. König fec.

in Kupfer von Bergmann u. Heller in München

Gustav Hering del.

