



UNIVERSITÄTS-  
BIBLIOTHEK  
PADERBORN

**Wertheim**

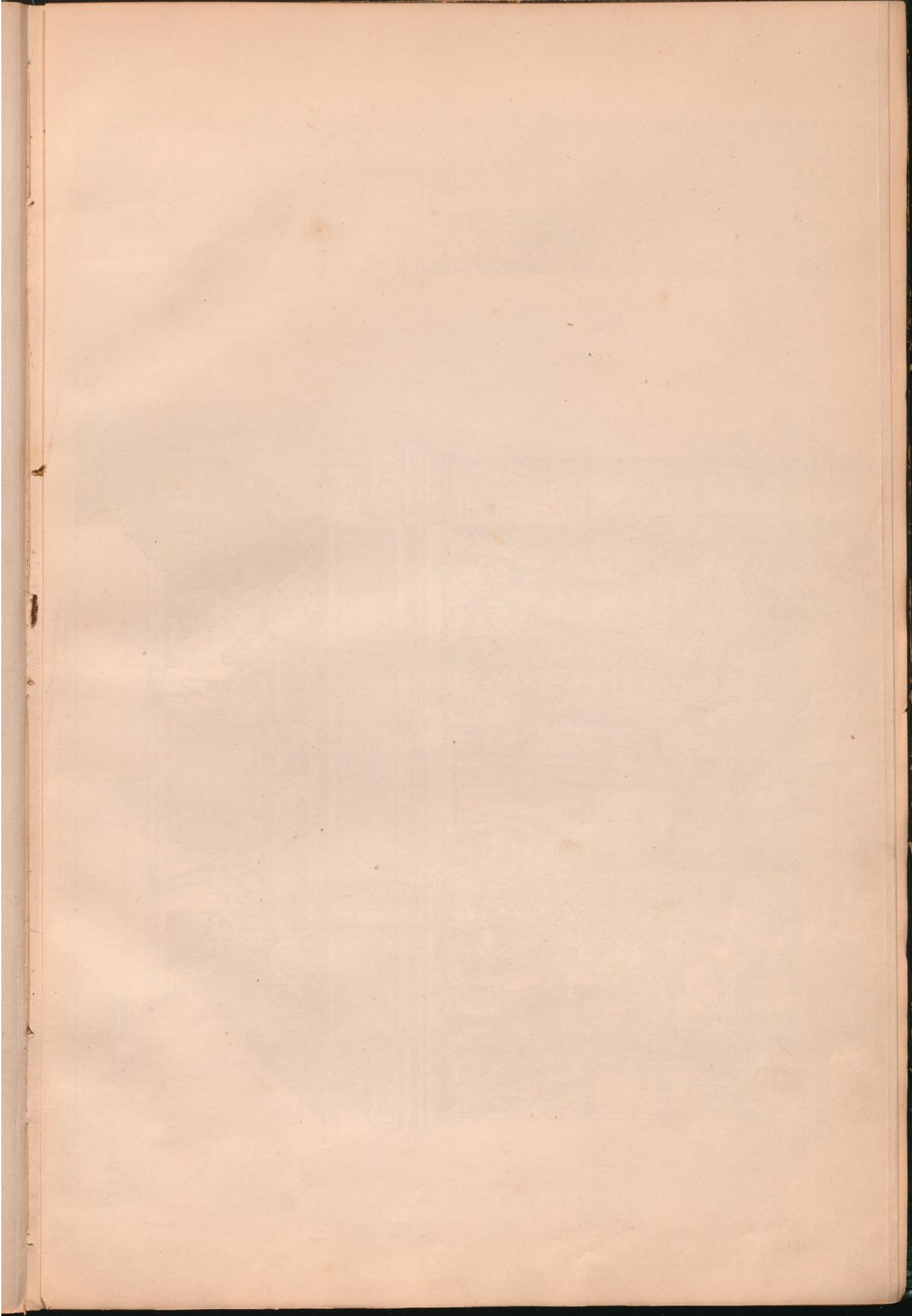
**Graef, Georg**

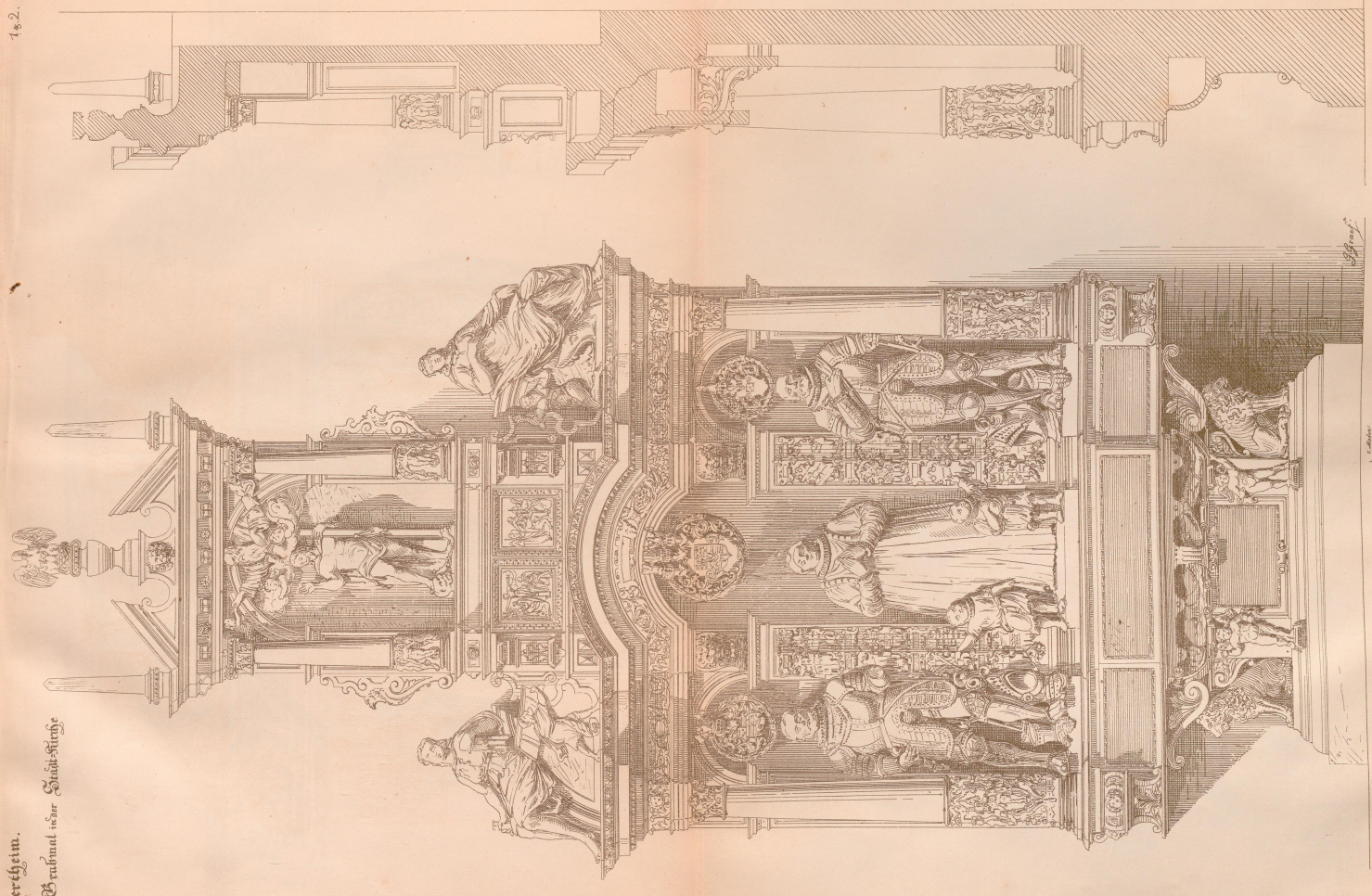
**Leipzig, 1874**

Blatt 1-4. Grabmal in der Stadtkirche.

---

[urn:nbn:de:hbz:466:1-67433](https://nbn-resolving.org/urn:nbn:de:hbz:466:1-67433)





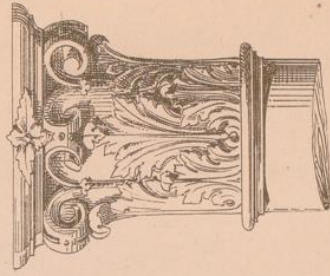
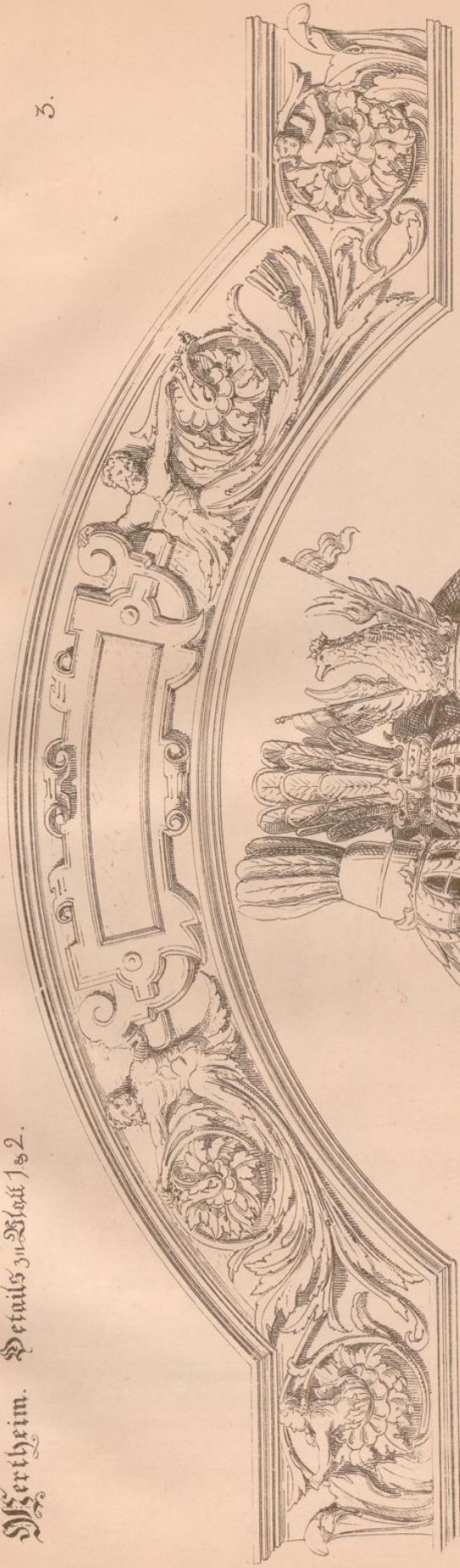
W. G. G. G.

182.

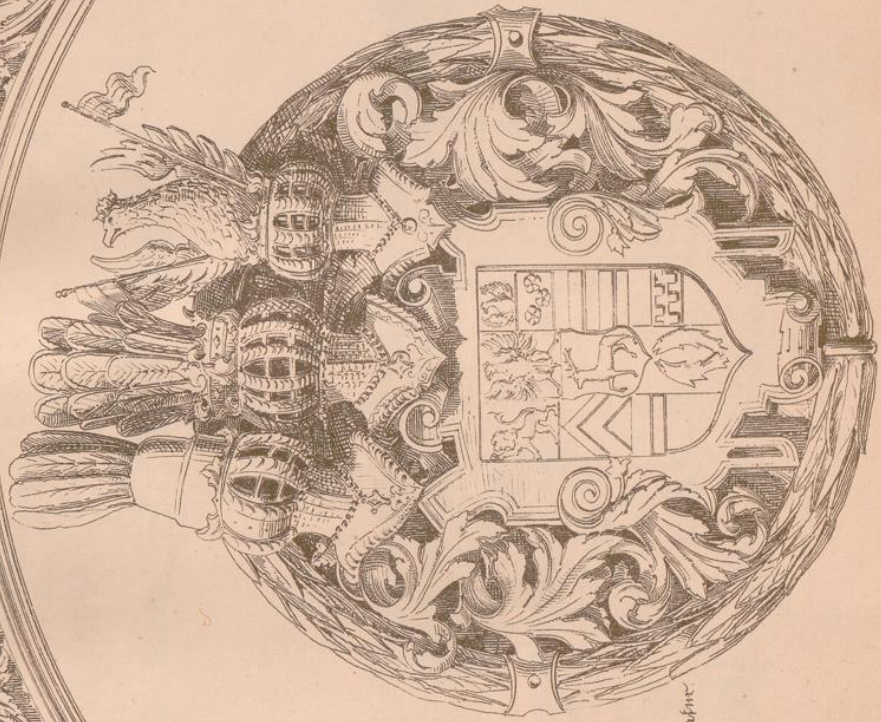


Mertheim. Details zu Blatt 1 & 2.

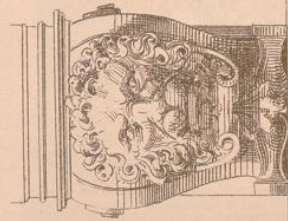
3.



9 Blatt



1/4 resp. Tafel



Abbildungswand v. F. H. v. d. G. v. d. G. v. d. G.





1/4 n. p. Natur.

Schnellpressenanr. v. F. M. Straussberger, Leipzig.



1711

1711

1711

