



UNIVERSITÄTS-  
BIBLIOTHEK  
PADERBORN

# Die Bauformen des Mittelalters in Sandstein

Opderbecke, Adolf

Weimar, 1882

Taf. XXX.

---

[urn:nbn:de:hbz:466:1-67077](https://nbn-resolving.org/urn:nbn:de:hbz:466:1-67077)

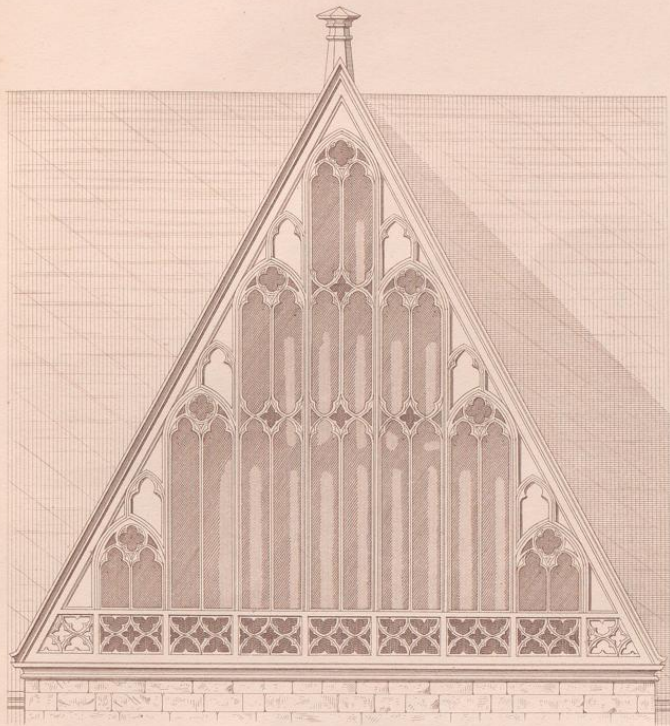


Fig 323 a.

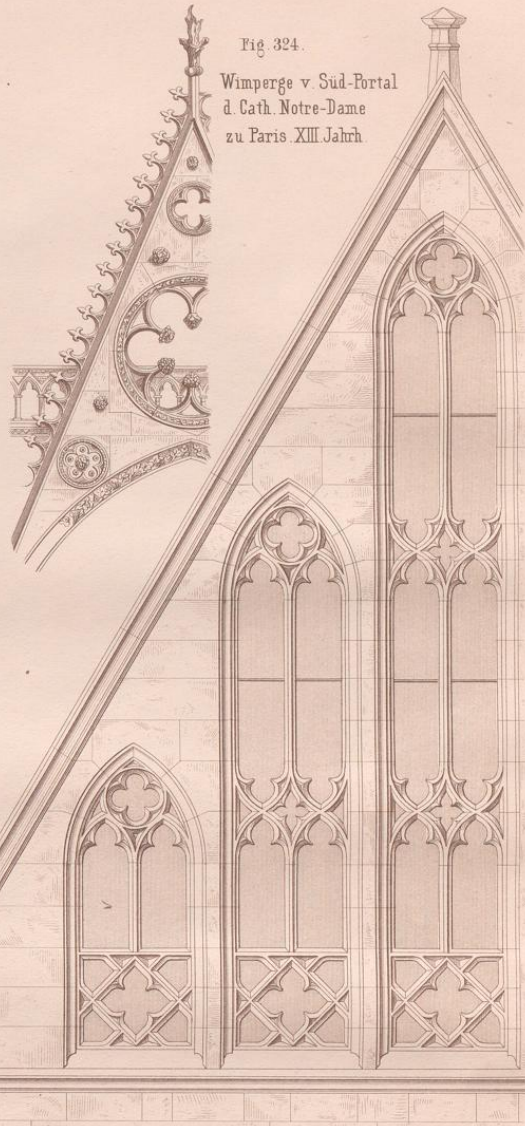


Fig 324.  
Wimperge v. Süd-Portal  
d. Cath. Notre-Dame  
zu Paris. XIII. Jahrh.

Fig. 322 a.



Fig 325.

Südl. Thüre z. Friedberg. Ende XIV. Jahrh. n. Moller (Detail)

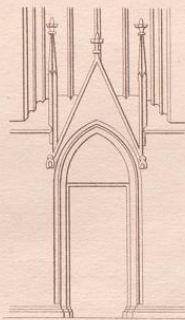


Fig 325a

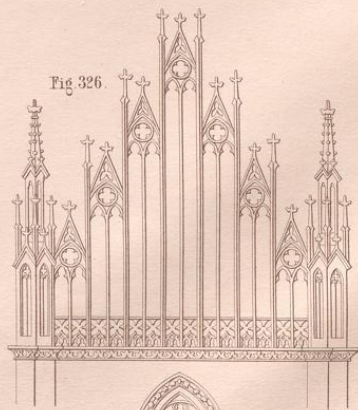


Fig 326.

Giebel d. Querschiffs d. K. zu Oppenheim. XIV. Jahrh. n. Moller

*Opferbocke, Bauformen.*



