



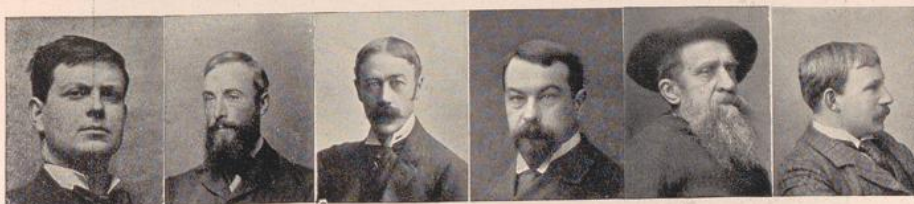
UNIVERSITÄTS-
BIBLIOTHEK
PADERBORN

First Exhibition Of The Works Of The "Société Nouvelle De Peintres Et De
Sculpteurs"

[urn:nbn:de:hbz:466:1-69992](https://nbn-resolving.org/urn:nbn:de:hbz:466:1-69992)

FIRST EXHIBITION OF THE WORKS OF THE "SOCIÉTÉ NOUVELLE DE PEINTRES ET DE SCULPTEURS"

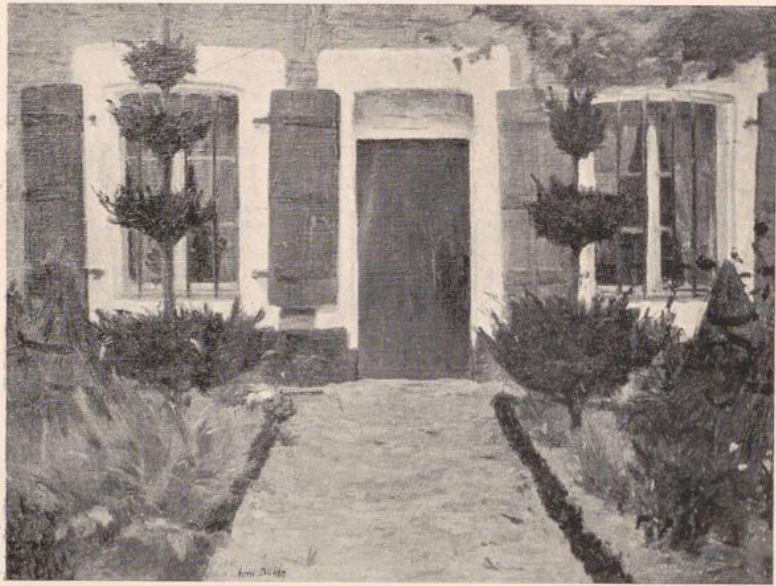
PARIS: GALERIE GEORGES PETIT
MARCH, 1900



THE MEMBERS OF THE "SOCIÉTÉ NOUVELLE."

J. W. ALEXANDER	A. CHARPENTIER	GABRIEL MOUREY (<i>President</i>)	CAMILLE LEFÈVRE	LUCIEN SIMON
E. AMAN-JEAN	EMILE CLAUS	A. DELAHERCHE	G. GRIVEAU	RENÉ PRINET
A. BAERTSOEN	CHARLES COTTET	HENRI DUHEM	G. LA TOUCHE	FRITZ THAULOW
F. BRANGWYN	A. DAUCHEZ	WALTER GAY	LE SIDANER	C. MEUNIER
				EUGÈNE VAIL

The "Société Nouvelle"



"HUMBLE JARDIN"

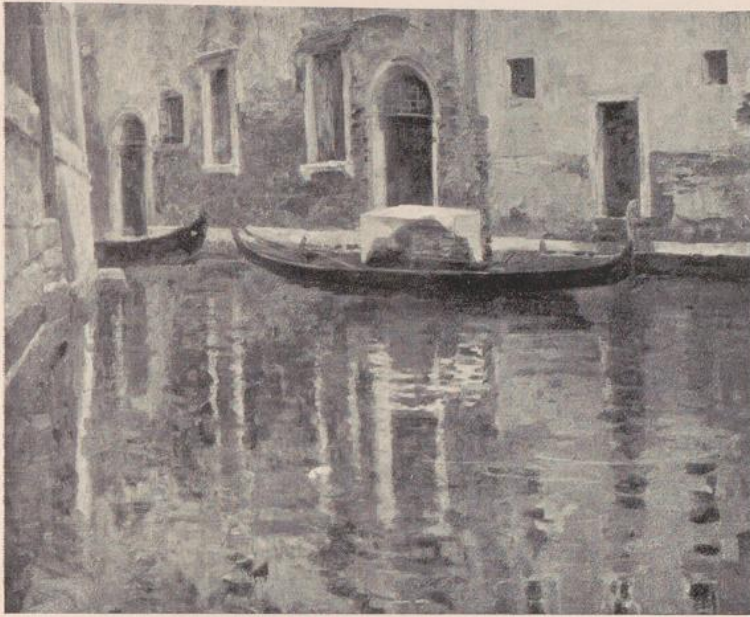
BY HENRI DUHEM



"CABARET BRETON"

BY LUCIEN SIMON

The "Société Nouvelle"



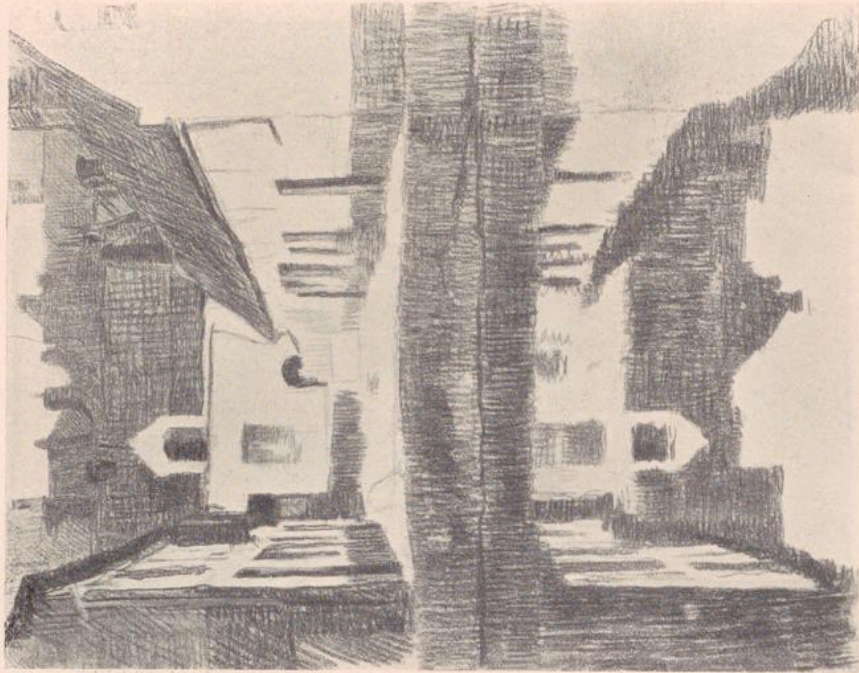
"RIO DELLA MADONETTA, VENICE"

BY EUGÈNE VAIL



"LE VIEUX PONT, VÉRONE"

BY FRITZ THAULOW



BY ALBERT BAERTSOEN

"PETITE CITÉ AU BORD DE L'EAU, FLANDRE"



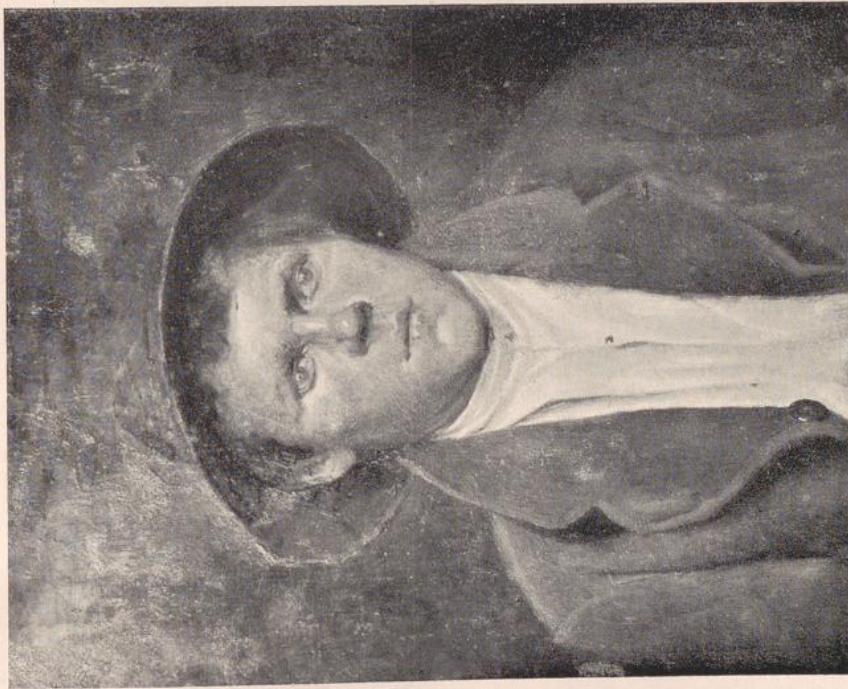
BY J. W. ALEXANDER

"FLOWERS"



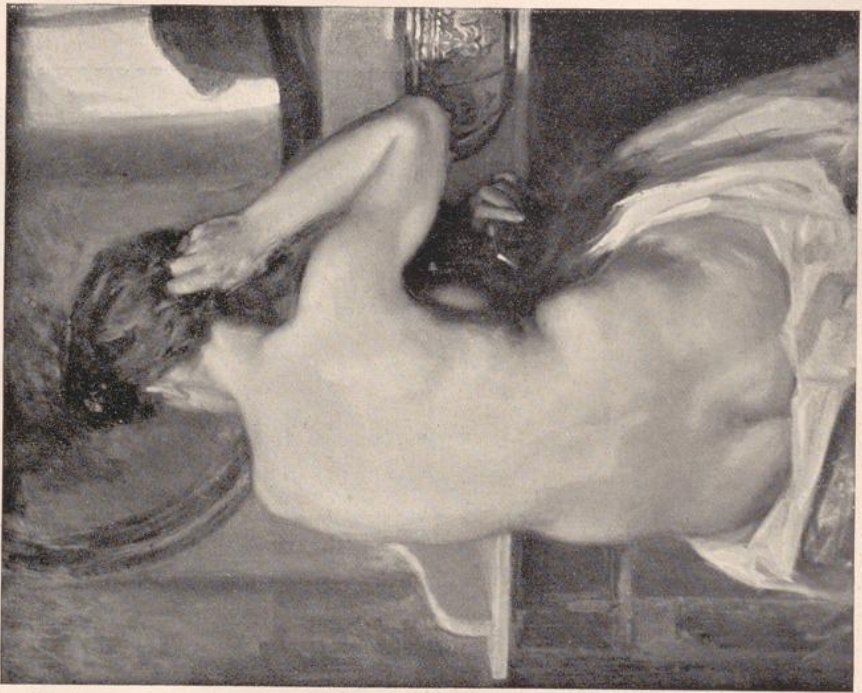
BY HENRI MARTIN

"ONDINE."



BY GEORGES GRIVEAU

"LE VACHER."



“ FEMME À SA TOILETTE.”

BY RENÉ PRINET



“ TÊTE DE FEMME ”

BY CAMILLE LEFÈVRE



BY WALTER GAY

"MATERNITÉ"



BY ALEXANDRE CHARPENTIER

"LA JEUNE MÈRE"

The "Société Nouvelle"



STUDY FOR "JEUNE FILLE ET VIEILLES FEMMES."

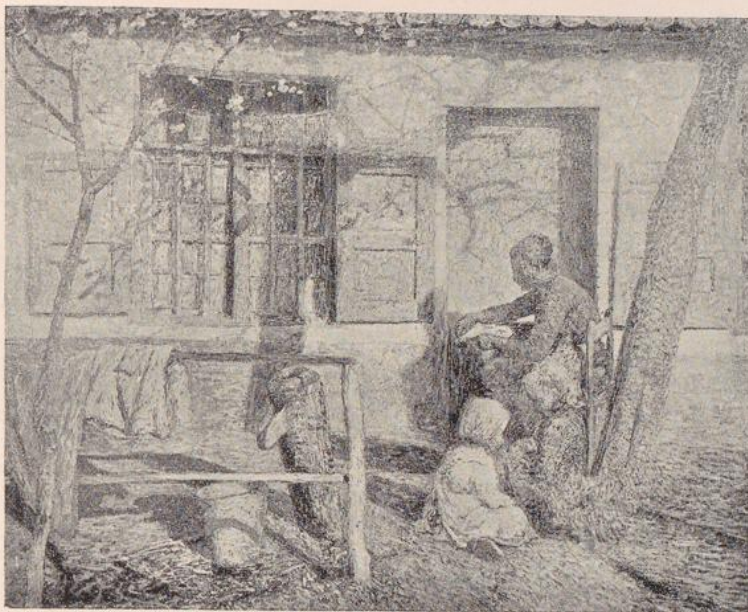
BY CHARLES COTTET



POTTERY-WARE

BY A. DELAHERCHE

The "Société Nouvelle"



"FAMILLE FLAMANDE."

BY EMILE CLAUS



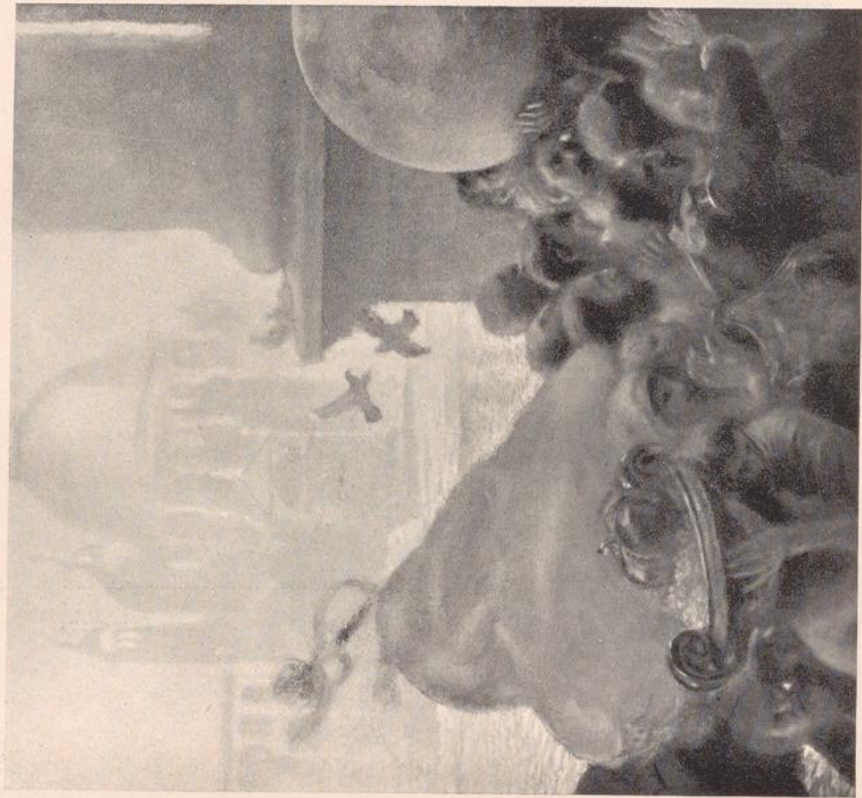
"RAMASSEURS DE GOEMON."

BY ANDRÉ DAUCHEZ



“LE BÛCHERON”

BY CONSTANTIN MEUNIER



“LES TROPHÉES.”

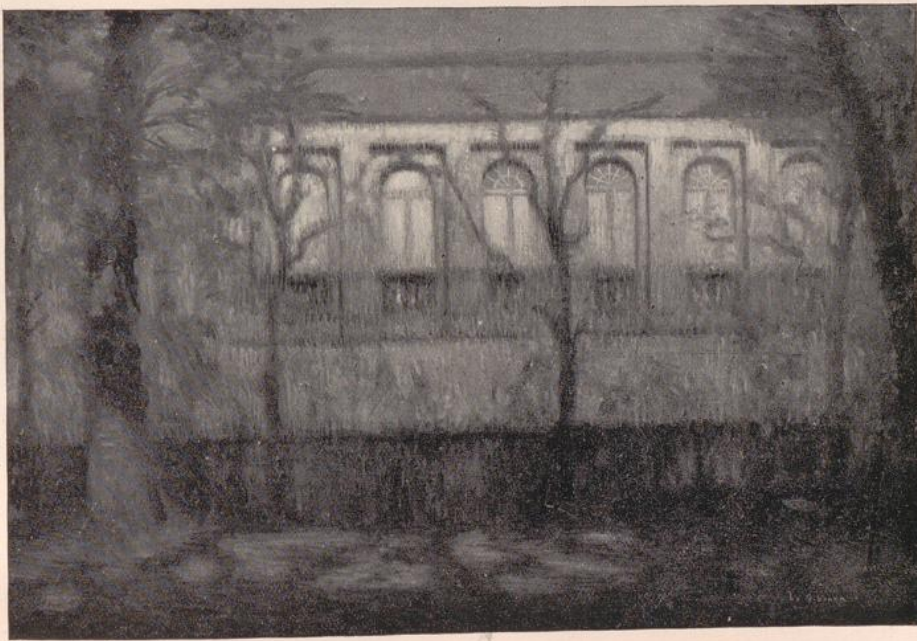
BY GASTON LA TOUCHE

The "Société Nouvelle"



"L'ESTUAIRE"

BY RENÉ MÉNARD



"L'ORANGERIE: BRUGES"

BY LE SIDANER



"LA LOGE," FROM A PASTEL
BY E. AMAN-JEAN

STUDY OF FIGURES FOR
"DAVID IN THE CAMP OF THE PHILISTINES"

BY
JOHN S. SARGENT, R.A.





JOHN S. SIKOVITZ INC.
BY
"LA LOGE" IN THE CIVIL OF THE BAPTIST
SCHOOL OF THE ARTS FOR

"LA LOGE" FROM A PASTEL
BY E. AMAN-JEAN



