



UNIVERSITÄTS-
BIBLIOTHEK
PADERBORN

Die mittelalterliche Holzarchitektur im ehemaligen Niedersachsen

Atlas enthaltend 14 Tafeln

Liebold, H.

Halle a. d. Saale, 1875

Etagengebälke. Mitte des XVI. bis Anfang des XVII. Jahrh. Blatt. XII.

[urn:nbn:de:hbz:466:1-71212](https://nbn-resolving.org/urn:nbn:de:hbz:466:1-71212)

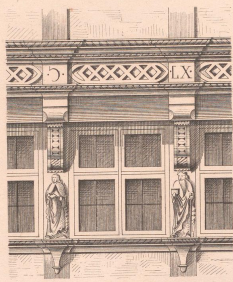


Fig. 1.
(1610)

Fig. 1. 2. 6 u. 7.
Tragengebälke aus
Braunschweig.

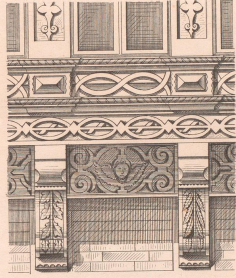


Fig. 2.

Fig. 3 u. 4. Tragengebälke aus Halberstadt 1570

Fig. 3.

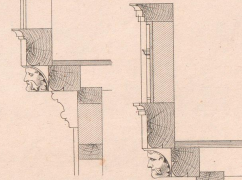
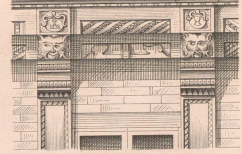


Fig. 4.

Fig. 5. Saumschwelle aus Braunschweig. (1558)



Fig. 6.

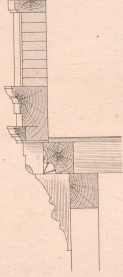
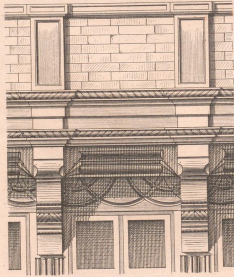


Fig. 7. (1562)

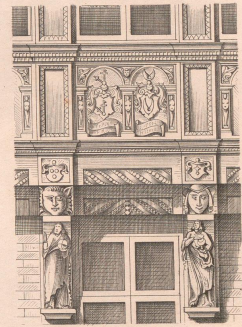
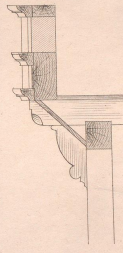
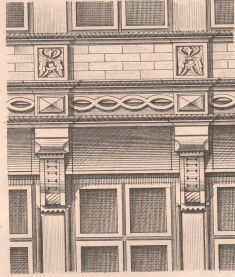


Fig. 8.

