



UNIVERSITÄTS-  
BIBLIOTHEK  
PADERBORN

## **Fassaden-Entwürfe für Lübeck**

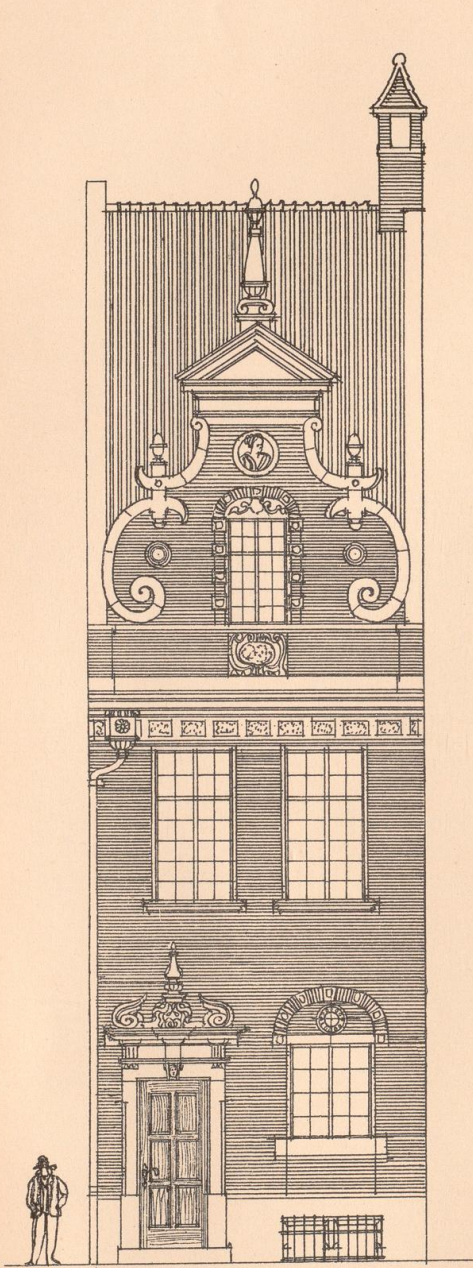
**Landé, Richard**

**Leipzig, [1901]**

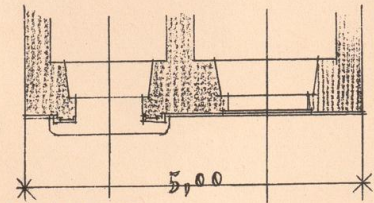
Tafel 22. Haus 1 IV. Preis. Haus 3 IV. Preis. Architekt: Alb. Wassermann -  
Berlin-Schöneberg.

---

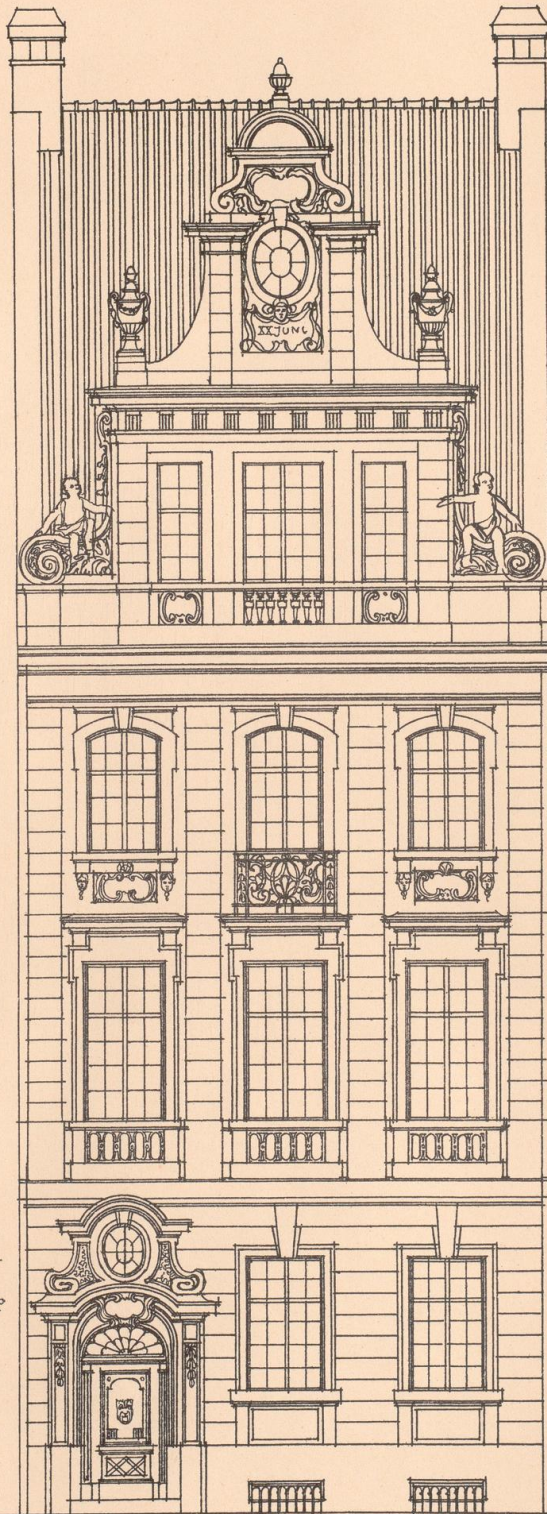
[urn:nbn:de:hbz:466:1-71649](https://nbn-resolving.org/urn:nbn:de:hbz:466:1-71649)



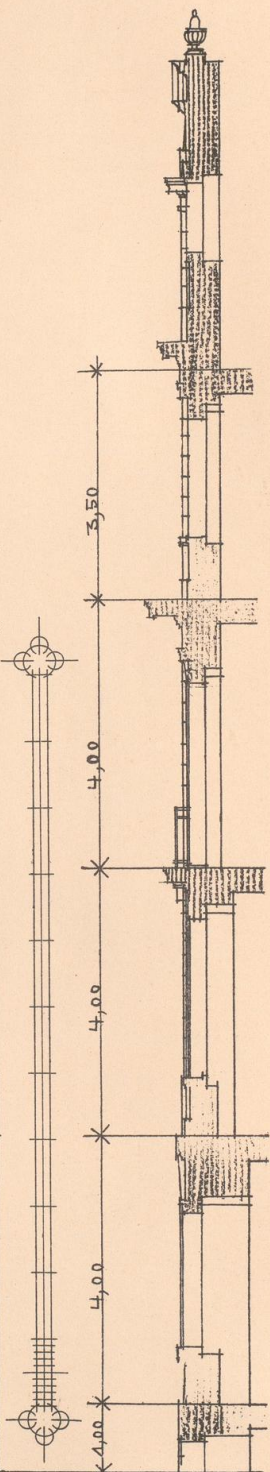
100 1 2 3 4 Meter



Haus 1 IV. Preis.



Haus 3 IV. Preis.



Architekt: ALB. WASSERMANN-BERLIN-SCHÖNEBERG.



06  
WW4  
1824