



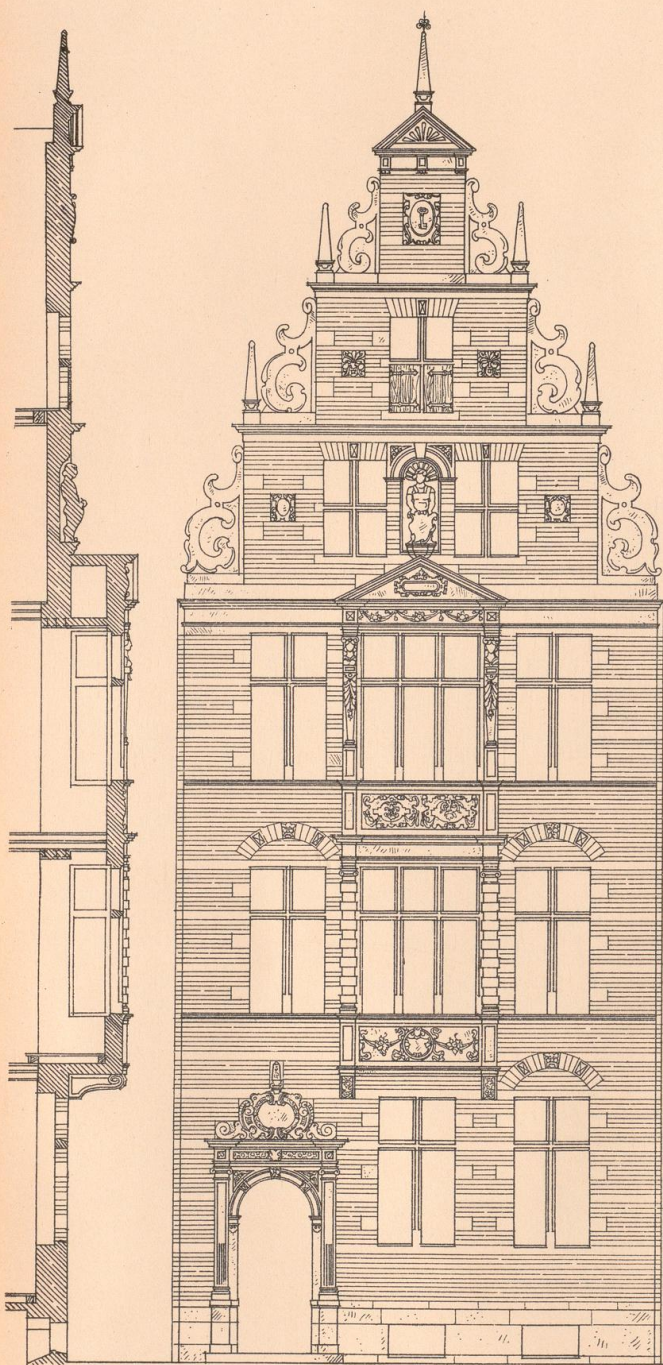
Fassaden-Entwürfe für Lübeck

Landé, Richard

Leipzig, [1901]

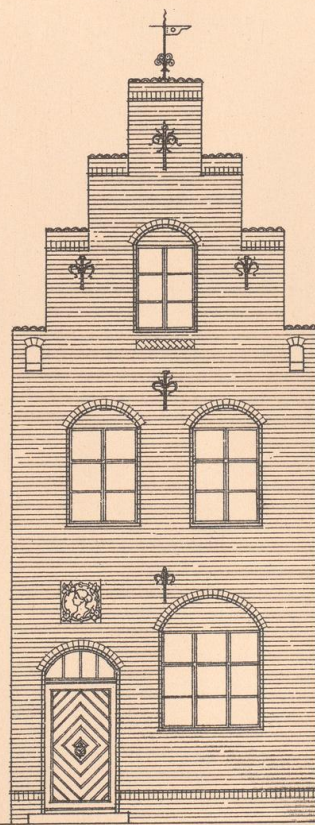
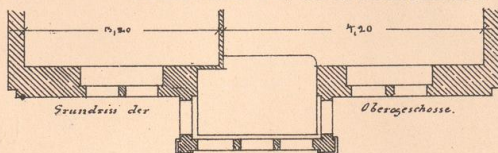
Tafel 44. Haus 3 angekauft. Haus 1 angekauft. Haus 1 angekauft.
Architekt: Reg. Bfr. Schrammen - Berlin.

[urn:nbn:de:hbz:466:1-71649](https://nbn-resolving.org/urn:nbn:de:hbz:466:1-71649)

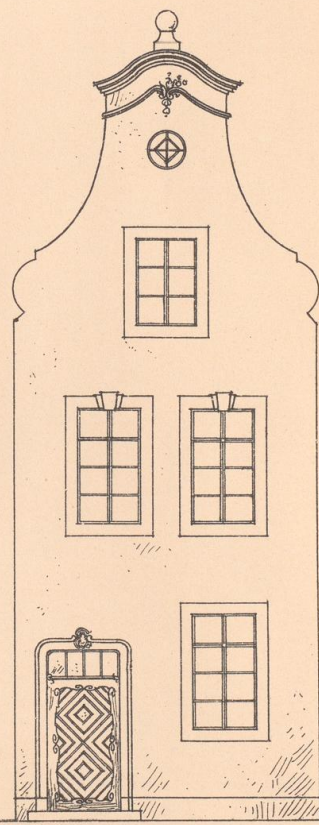


Haus 3 angekauft.

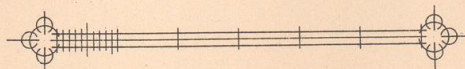
Architekt: REG. BFR. SCHRAMMEN-BERLIN.



Haus 1 angekauft.



Haus 1 angekauft.





06
wwy
1824