



## **Meurer's Pflanzenbilder**

ornamental verwertbare Naturstudien für Architekten Kunsthandwerker,  
Musterzeichner pp. ; studies of plants for the use of architects, designers,  
decorators etc. ; études végétales applicables à l'ornementation à l'usage  
des architects, décorateurs, dessinateurs etc.

Heft 1 - 12

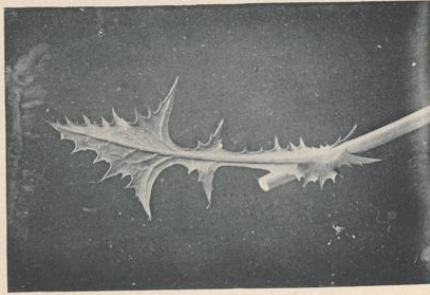
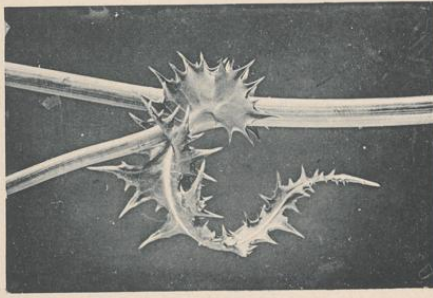
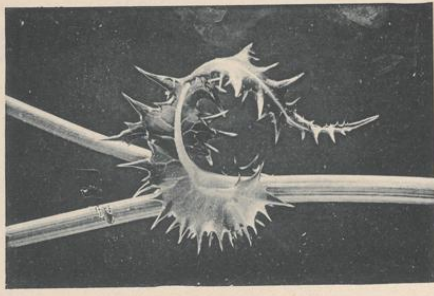
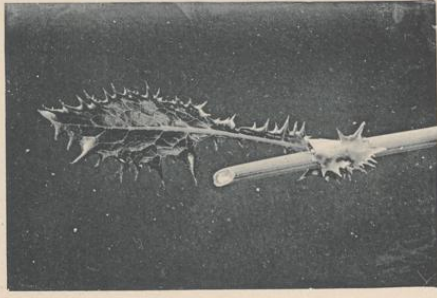
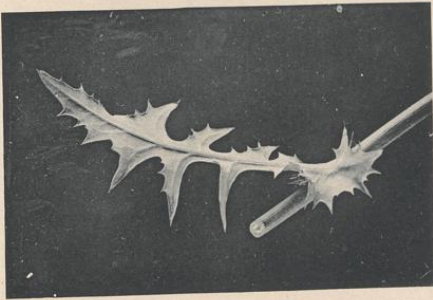
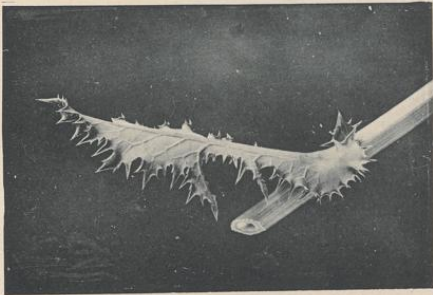
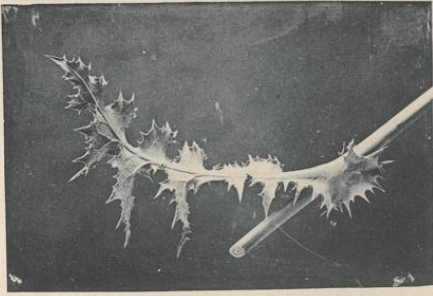
**Meurer, Moritz**

**Dresden, [1896-1901]**

Tafel 2. Sonchus.

---

[urn:nbn:de:hbz:466:1-74381](https://nbn-resolving.org/urn:nbn:de:hbz:466:1-74381)



G. Kühnmann, Dresden.

M. Meurer, Rom.

SONCHUS.

Lichtdruck von Albert Prinsch, Berlin.

