



## **Meurer's Pflanzenbilder**

ornamental verwertbare Naturstudien für Architekten Kunsthandwerker, Musterzeichner pp. ; studies of plants for the use of architects, designers, decorators etc. ; études végétales applicables à l'ornementation à l'usage des architects, décorateurs, dessinateurs etc.

Heft 1 - 12

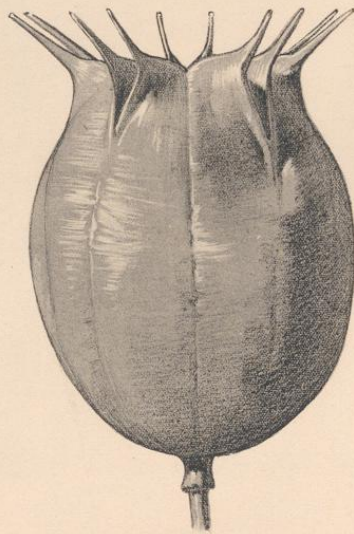
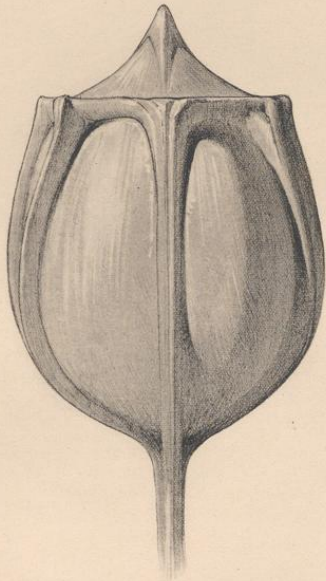
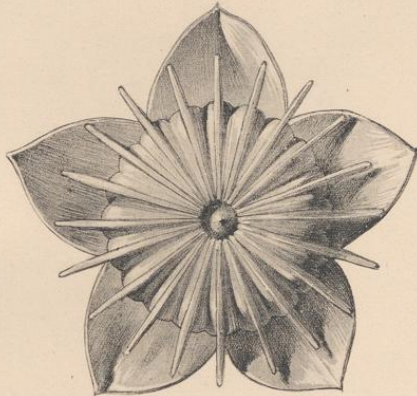
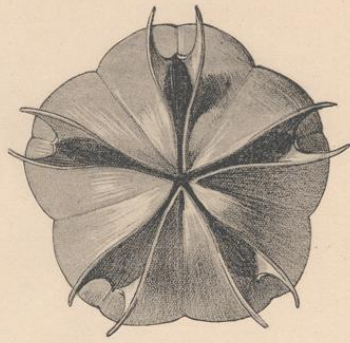
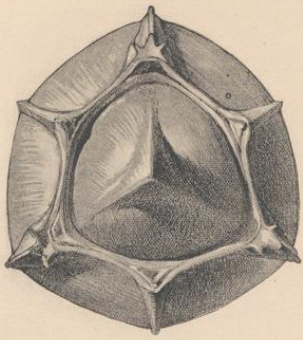
**Meurer, Moritz**

**Dresden, [1896-1901]**

Tafel 6. 1. Alstroemeria. 2. Nigella. 3. Hibiscus.

---

[urn:nbn:de:hbz:466:1-74381](https://nbn-resolving.org/urn:nbn:de:hbz:466:1-74381)



M. Meurer, Rom.

G. Kahlmann, Dresden.

1. ALSTROEMERIA. 2. NIGELLA. 3. HIBISCUS.

Lichtdruck von Albert Frisch, Berlin W.

