



UNIVERSITÄTS-
BIBLIOTHEK
PADERBORN

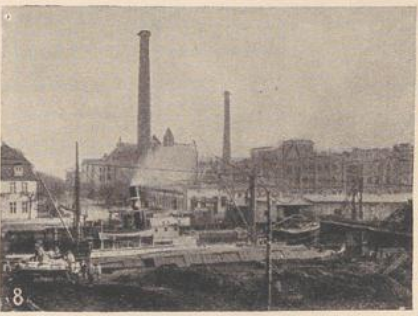
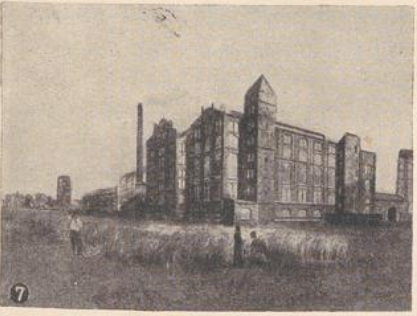
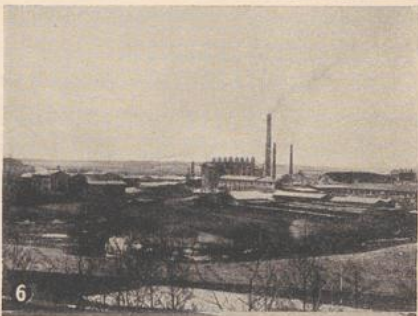
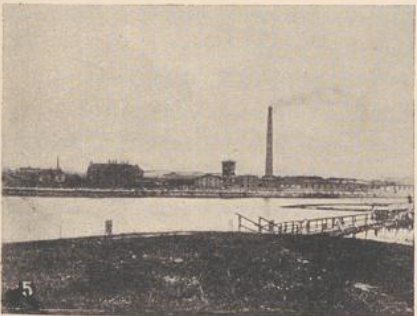
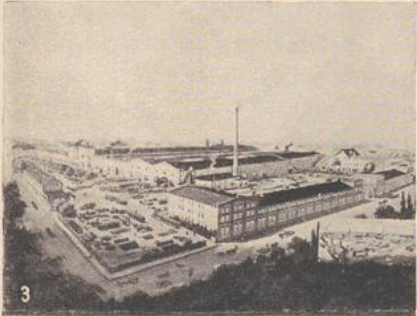
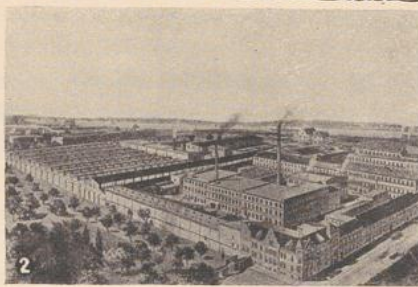
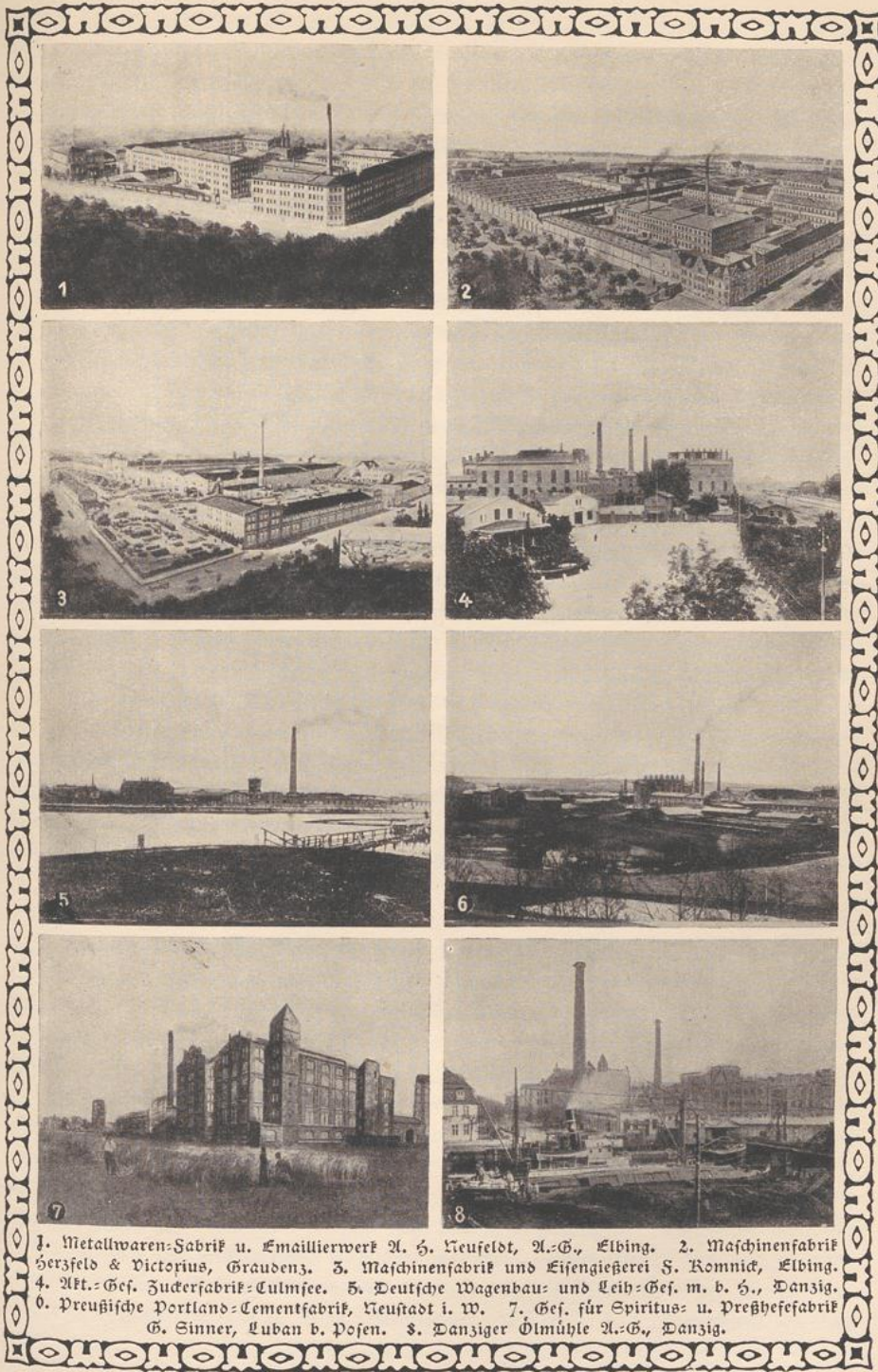
Die deutsche Ostmark

Both, Heinrich von

Lissa i. P., 1913

Illustrationen

[urn:nbn:de:hbz:466:1-77577](https://nbn-resolving.org/urn:nbn:de:hbz:466:1-77577)



1. Metallwaren-Fabrik u. Emailierwerk A. S. Neufeldt, A.-G., Elbing. 2. Maschinenfabrik Herzfeld & Victorius, Graudenz. 3. Maschinenfabrik und Eisengießerei S. Komnick, Elbing. 4. Akt.-Ges. Zuckerfabrik-Culmsee. 5. Deutsche Wagenbau- und Leih-Ges. m. b. H., Danzig. 6. Preussische Portland-Cementfabrik, Neustadt i. W. 7. Ges. für Spiritus- u. Presshefefabrik G. Sinner, Luban b. Posen. 8. Danziger Olmühle A.-G., Danzig.

