



UNIVERSITÄTS-
BIBLIOTHEK
PADERBORN

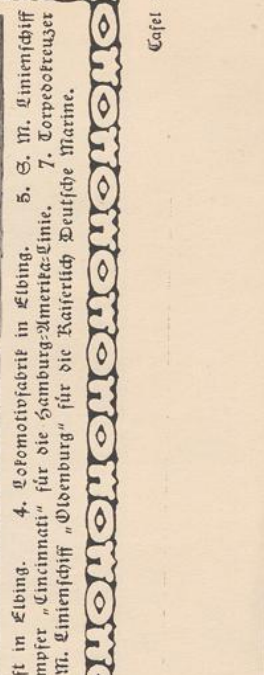
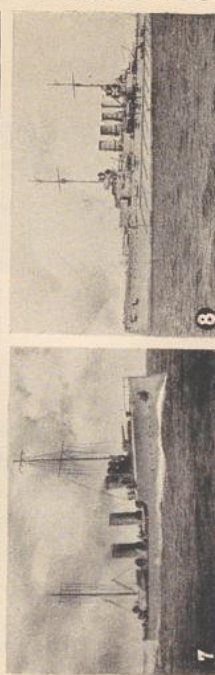
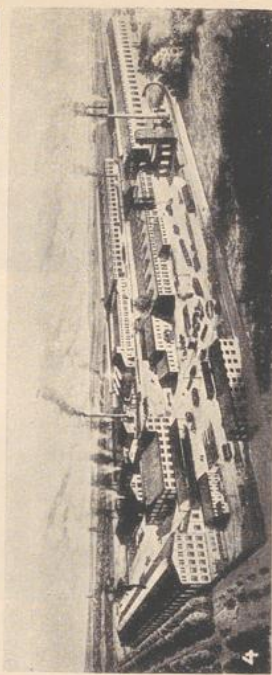
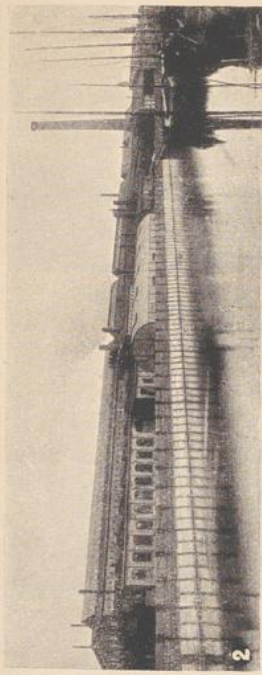
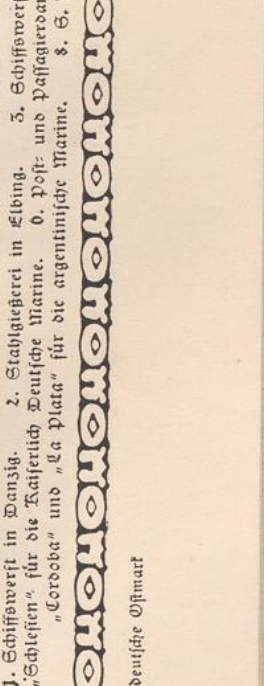
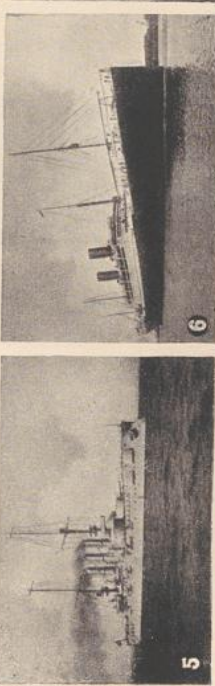
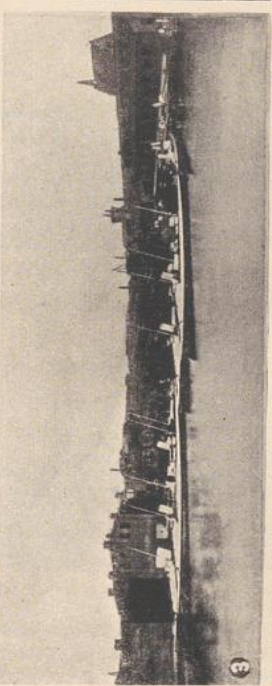
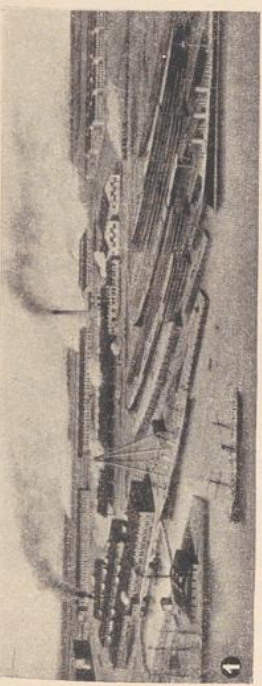
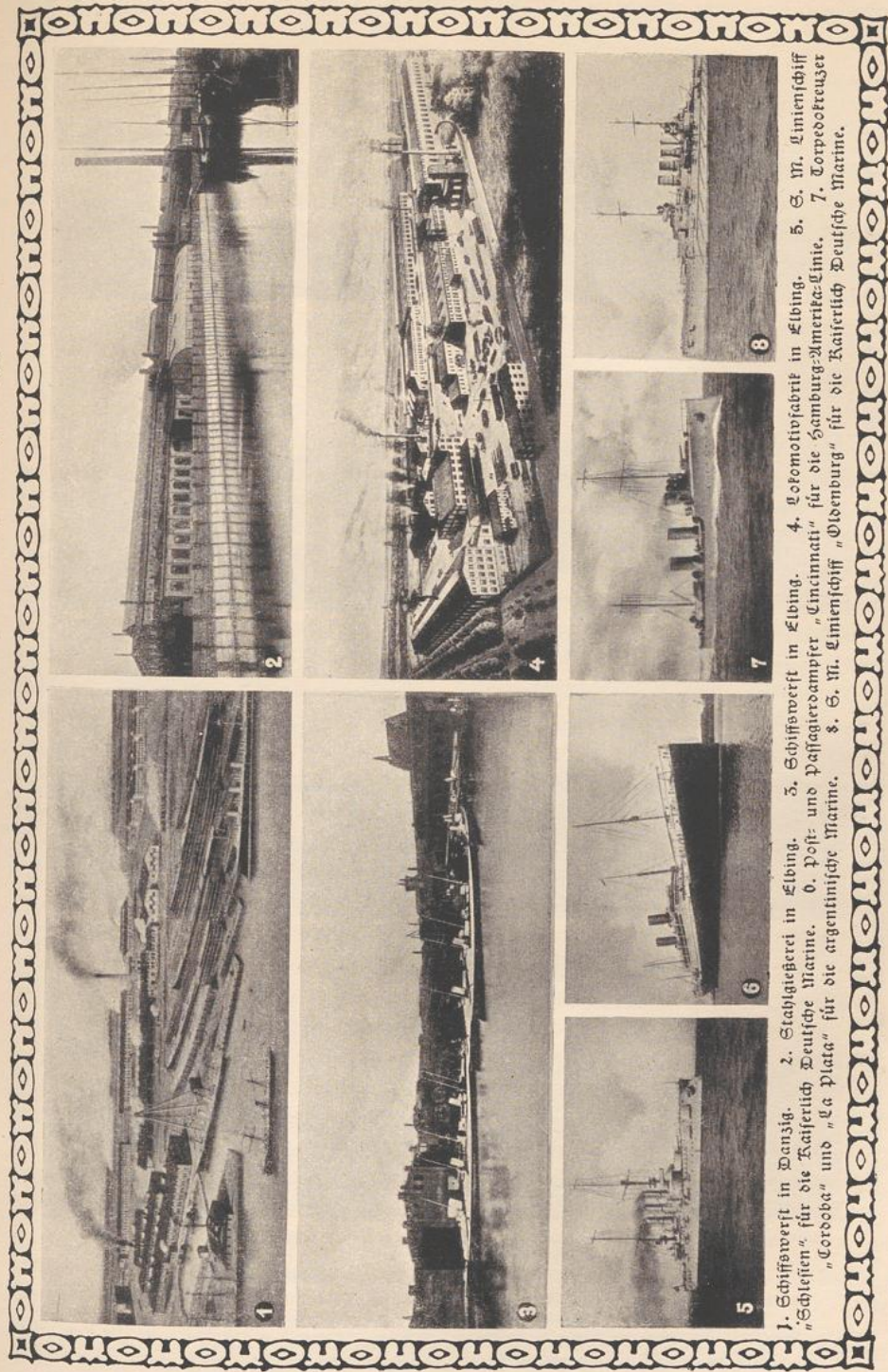
Die deutsche Ostmark

Both, Heinrich von

Lissa i. P., 1913

Illustrationen

[urn:nbn:de:hbz:466:1-77577](https://nbn-resolving.org/urn:nbn:de:hbz:466:1-77577)



1. Schiffsverft in Danzig. 2. Stahlgießerei in Elbing. 3. Schiffsverft in Elbing. 4. Lokomotivfabrik in Elbing. 5. S. M. Limenschiff "Schleien" für die Kaiserlich Deutsche Marine. 6. Post- und Passagierdampfer "Cincinnati" für die Hamburg-Amerika-Line. 7. Torpedokreuzer "Cordoba" und "La Plata" für die argentinische Marine. 8. S. M. Limenschiff "Oldenburg" für die Kaiserlich Deutsche Marine.

Die deutsche Offmar

