



UNIVERSITÄTS-
BIBLIOTHEK
PADERBORN

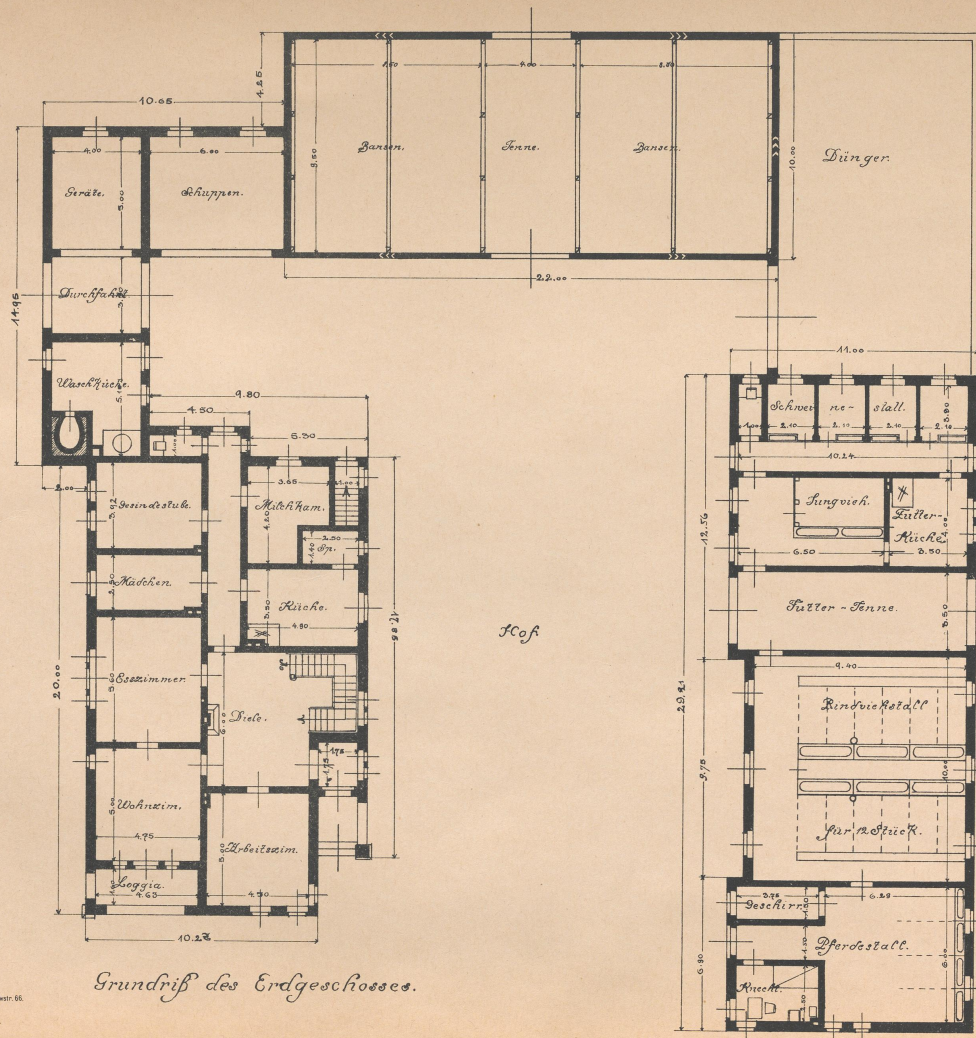
Musterentwürfe für Bauten im Regierungs-Bezirk Hildesheim

Regierungsbezirk Hildesheim

Hildesheim, 1909

I. Bauerngehöfte für 80 Morgen Land

[urn:nbn:de:hbz:466:1-78797](https://nbn-resolving.org/urn:nbn:de:hbz:466:1-78797)



Kostenberechnung:

Wohnhaus:	1883 dm ³ 4 je 12 M.	22596 M.
Stall:	1566 " " 10 M.	15660 M.
Scheune:	1100 " " 9 M.	9900 M.
Schuppen pp:	505 " " 8 M.	4040 M.
Nebenanlagen:		804 M.
Gesamtkosten:		53000 M.

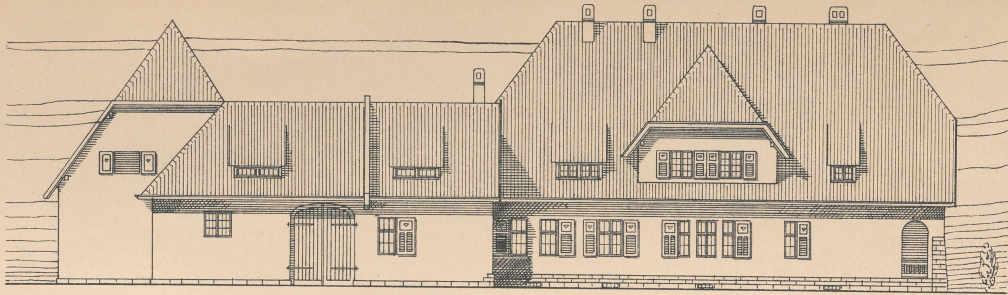
Maßstab: 1:150.

H. Bock.
J. B. Bock.
Hildesheim, 24. 7. 08.

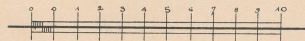
06
W4 F
1334



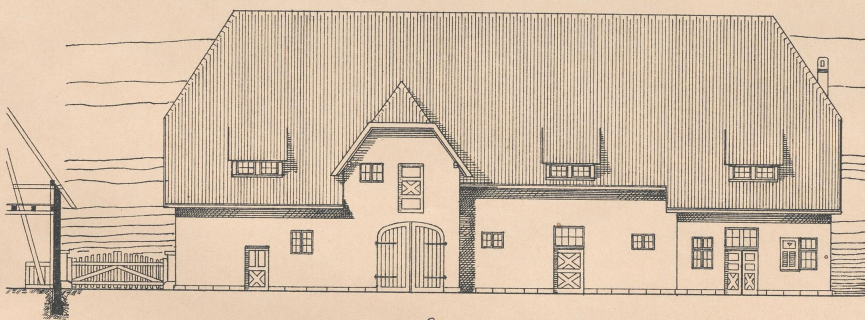
EK 787
KD/X



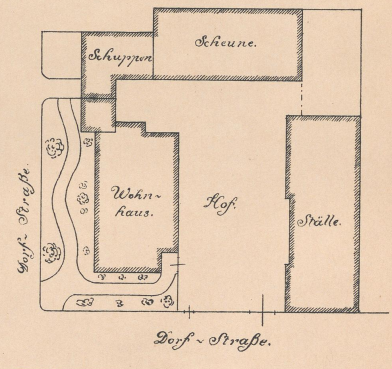
Seitenansicht.



Maßstab 1:150.



Stallansicht.



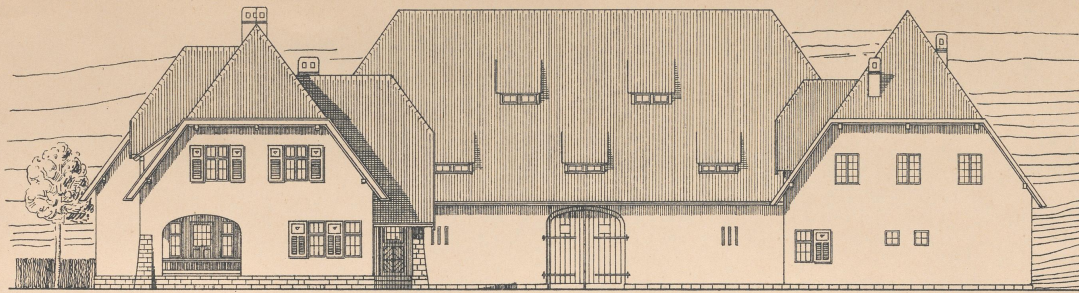
Lageplan. 1:500.

J. J. J. J.
Hildesheim, 24. 7. 88

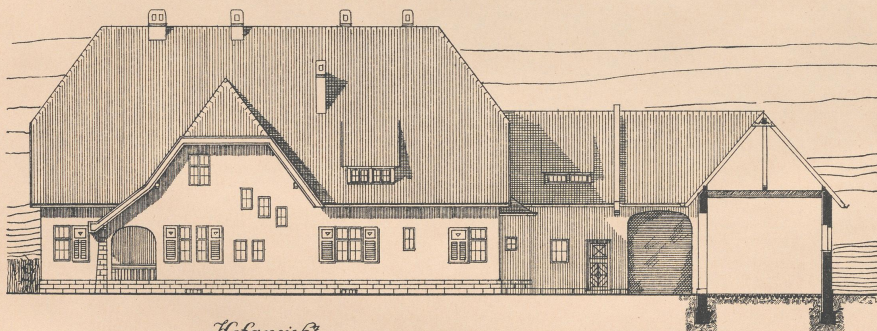
06
WLF
1334



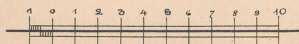
EK 787
KD/X



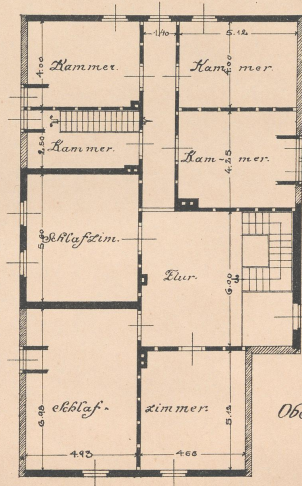
Gesamtansicht.



Hofansicht.



Maßstab 1:150.



Obergeschoß.

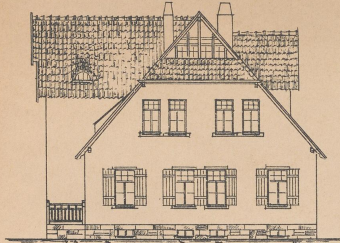
H. Jock.

gef. Vork.
Bek. d. 24. 7. 8.

06
WJLF
/334



EK 787
KD/X

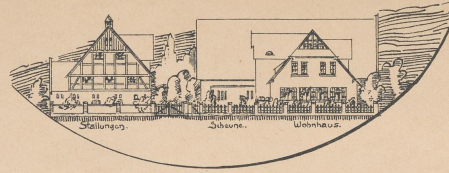


FRAGEN-ANSICHT.



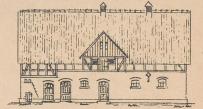
HOF-ANSICHT.

Gesamtansicht nach der Strasse.

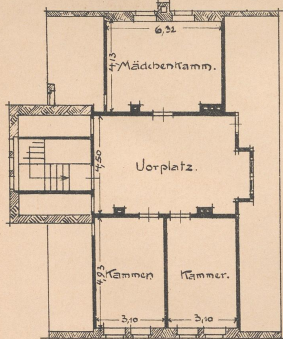


KOSTENBERECHNUNG

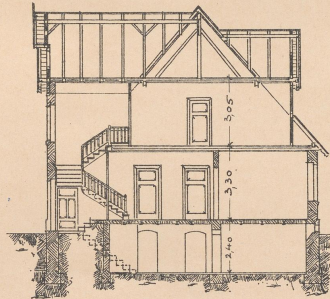
Wohnhaus	1075 dm 34 je 1/2 M.	12900 M.
Stall	949 " " 10 "	9490 "
Schene	1244 " " 9 "	11196 "
Stallschuppen	22 " 4 8 4 "	176 "
Wagenremise		150 "
Hofanlagen		588 "
Gesamtkosten		34500 M.



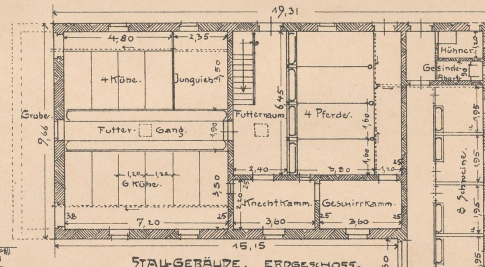
STALL-ANSICHT.



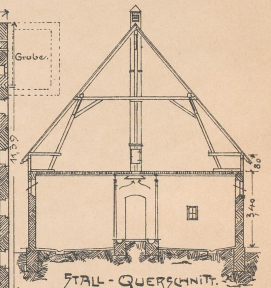
1. OGESCHOS.



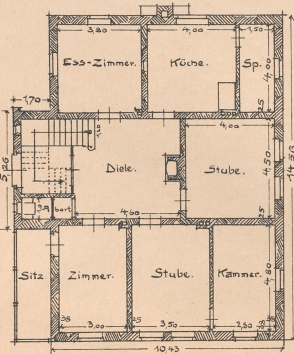
QUERSCHNITT.



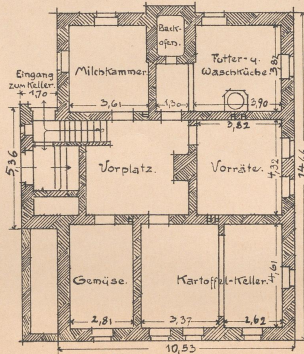
STALLGEBÄUDE. ERDGESCHOS.



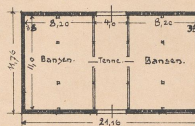
STALL-QUERSCHNITT.



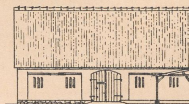
ERDGESCHOS.



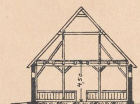
KELLERGESCHOS.



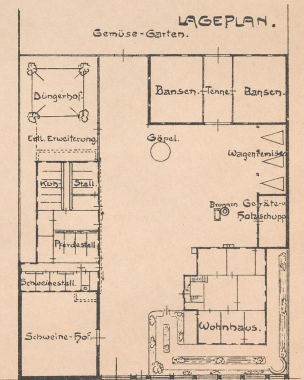
SCHENE.



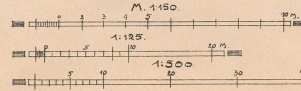
SCHENEN-ANSICHT.



QUERSCHNITT.



LAGEPLAN.



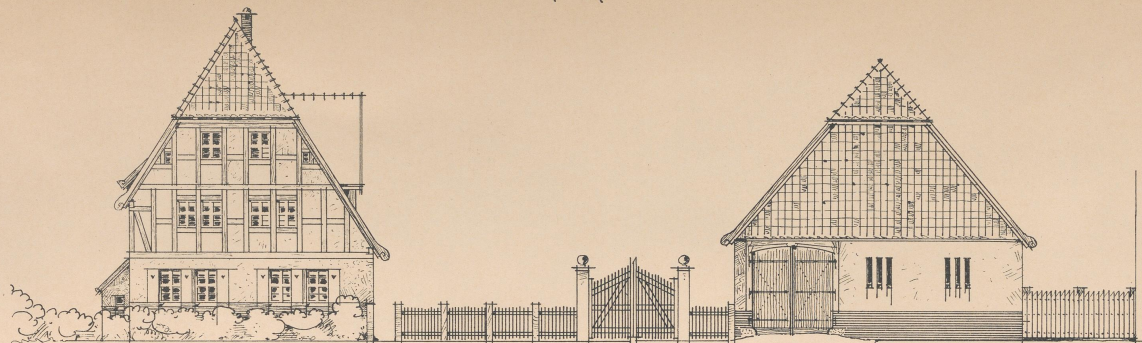
HILDESHEIM, den 2. APRIL 1908

DER KREISBAUINSPEKTOR
K. F. L. L. L.

06
WLF
1334



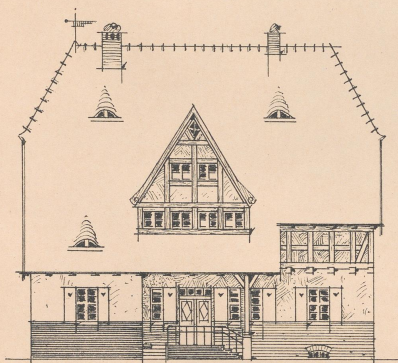
EK 787
KD/X



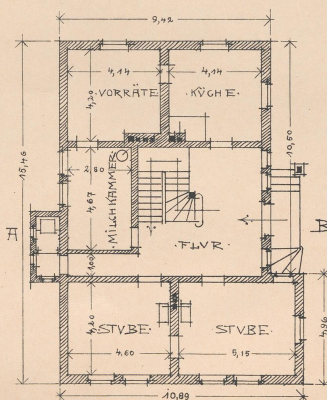
WOHNHAUS

ANSICHT VON SÜDEN

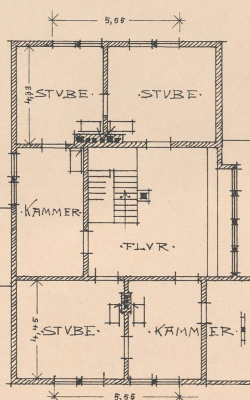
SCHENNE



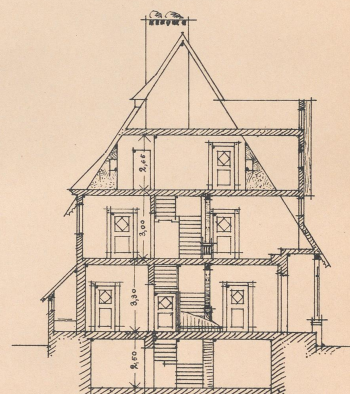
HOFANSICHT



ERD-GESCHOSS
HIERUNTER: KELLER



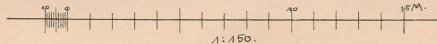
OBER-GESCHOSS
IM DACHGESCHOSS: GESINDEKÄMMERN
RÄUCHERKÄMMERN V. DERGL.



QUERSCHNITT A-B

KOSTENBERECHNUNG:

Wohnhaus: 1453 qm zu je 12 M.	17436 M.
Abortanlage:	150 "
Stall:	1300 " " 10 " 13000 "
Geräteschuppen 166 " " 8 " 1328 "	
Scheune: 1445 " " 9 " 10305 "	
Nebenanlagen:	781 "
Gesamtkosten:	43000 M.



Verlag v. August Lax, Hildesheim.

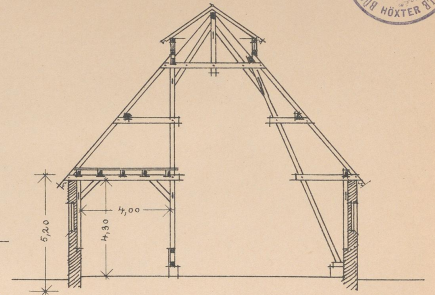
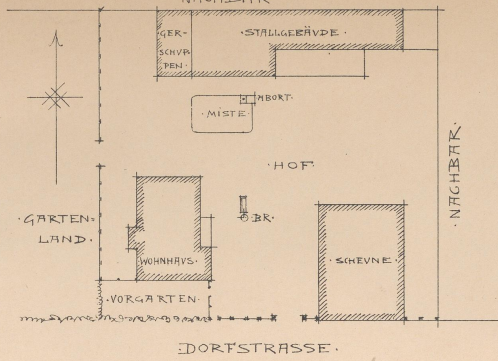
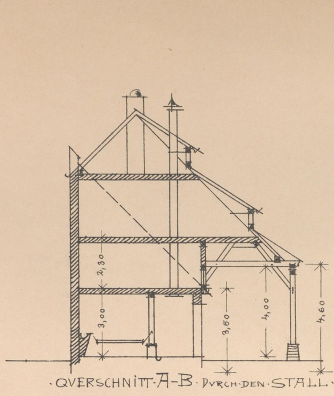
GOSLAR, MAI 1907.

BAVRAT.

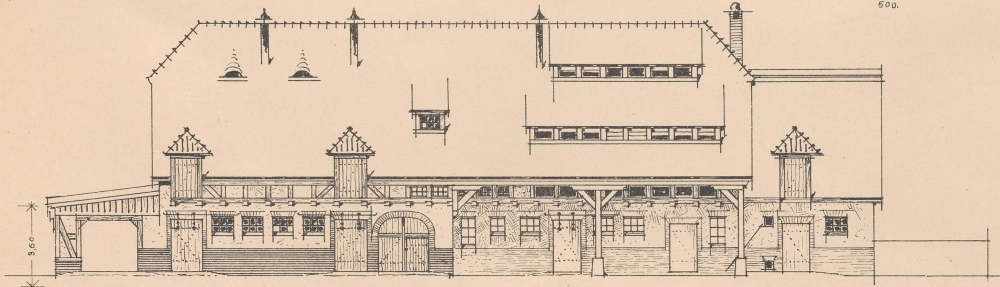
06
WuF
1334



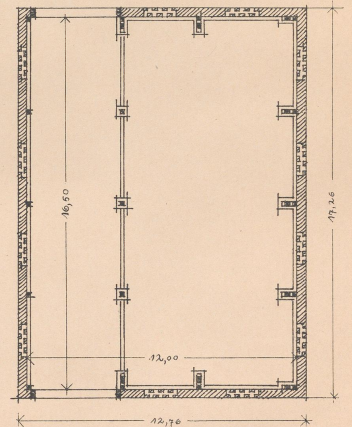
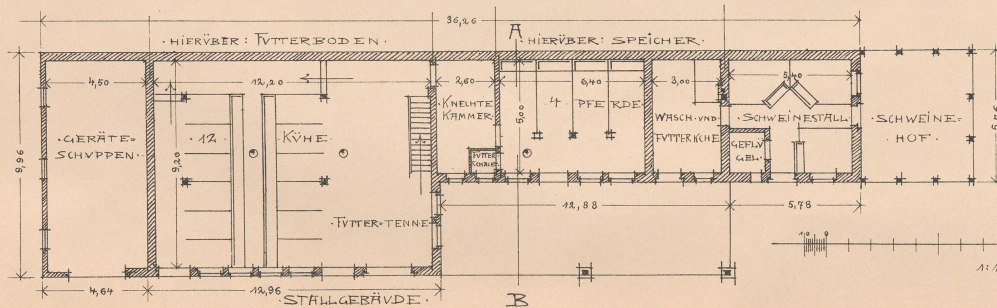
EK 787
KD/X



SCHEUNE VON RUND 1500 KBM BERGERAUM



STALLGEBÄUDE HOFANSICHT



06
W. F.
1334



EK 787
KD/X