



UNIVERSITÄTS-
BIBLIOTHEK
PADERBORN

Portrait miniatures

Williamson, George Charles

London [u.a.], 1910

Illustrations in Colour. Illustrations in Monotone.

[urn:nbn:de:hbz:466:1-77941](https://nbn-resolving.org/urn:nbn:de:hbz:466:1-77941)



MRS. PEMBERTON
BY HANS HOLBEIN

FROM THE COLLECTION OF MR. J. PIERPONT MORGAN



QUEEN ELIZABETH
BY NICHOLAS HILLIARD

FROM THE CABINET OF A WELL-KNOWN COLLECTOR



PHILIP II., KING OF SPAIN
BY ISAAC OLIVER

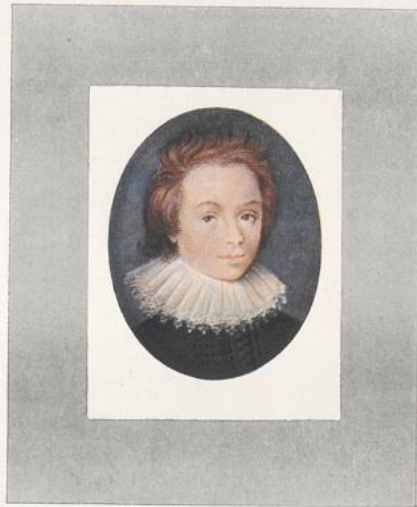


MARY, QUEEN OF SCOTS
BY NICHOLAS HILLIARD



QUEEN ANNE OF DENMARK
BY ISAAC OLIVER

ALL FROM THE COLLECTION OF MR. J. PIERPONT MORGAN



A SON OF SIR KENELM DIGBY
BY ISAAC OLIVER (1632)

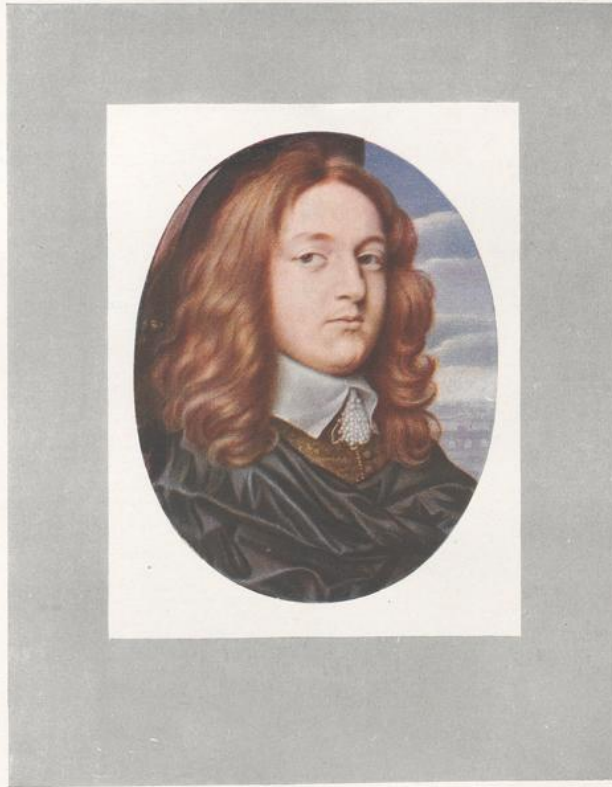


FREDERICK, KING OF BOHEMIA
BY ISAAC OLIVER



THE QUEEN OF BOHEMIA
BY ISAAC OLIVER

ALL FROM THE COLLECTION OF THE RT. HON. SIR CHARLES DILKE, BART., M.P.



THE DUKE OF BUCKINGHAM
BY JOHN HOSKINS, THE ELDER

FROM THE CABINET OF A WELL-KNOWN COLLECTOR



QUEEN HENRIETTA MARIA
BY JOHN HOSKINS, THE ELDER

FROM THE COLLECTION OF MR. J. PIERPONT MORGAN



CHARLES II
BY SAMUEL COOPER



JOHN, EARL OF LOUDOUN
(1598-1662)
BY SAMUEL COOPER

BOTH FROM THE COLLECTION OF MR. J. PIERPONT MORGAN



COLONEL LILBURNE
(1618-1657)
BY SAMUEL COOPER



VISCOUNTESS FAUCONBERG, DAUGHTER OF OLIVER CROMWELL
BY SAMUEL COOPER

BOTH FROM THE COLLECTION OF MR. E. M. HODGKINS



MISS CHRISTIAN TEMPLE
BY OR AFTER SAMUEL COOPER

FROM THE COLLECTION OF THE RT. HON. SIR CHARLES DILKE, BART., M.P.



RACHEL FANE, COUNTESS OF BATH AND LATER OF MIDDLESEX
(1612-1680)
BY DAVID DES GRANGES

FROM THE COLLECTION OF MR. E. M. HODGKINS



JOHN MILTON
ARTIST UNKNOWN

FROM THE COLLECTION OF DR. G. C. WILLIAMSON



GEORGE, PRINCE OF DENMARK
BY CHRISTIAN RICHTER



FROM THE COLLECTION OF MR. E. M. HODGKINS



MADAME DU BARRY
(1746-1793)
BY RICHARD COSWAY. R.A.

FROM THE COLLECTION OF MR. J. PIERPONT MORGAN



VISCOUNTESS ST. ASAPH (*NÉE* LADY CHARLOTTE PERCY) SECOND
WIFE OF GEORGE, VISCOUNT ST. ASAPH, AFTERWARDS THIRD
EARL OF ASHBURNHAM
BY RICHARD COSWAY, R.A.

FROM THE COLLECTION OF LORD HOTHFIELD



LADY AUGUSTA MURRAY
WIFE OF THE DUKE OF SUSSEX
BY RICHARD COSWAY R.A.



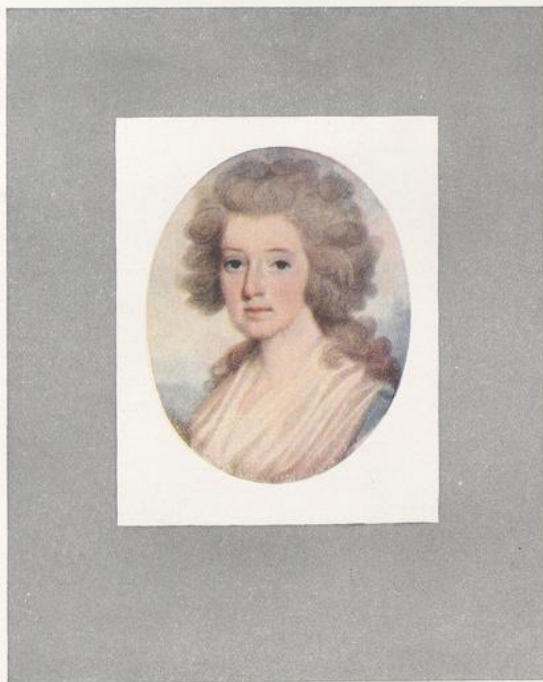
HENRIETTA, LADY DUNCANNON
AFTERWARDS COUNTESS OF BESSBOROUGH
(Ob. 1821)
BY RICHARD COSWAY R.A.

BOTH FROM THE COLLECTION OF MR. J. PIERPONT MORGAN



LUCY, WIFE OF WILLIAM H. NASSAU, FOURTH EARL OF ROCHFORD
BY RICHARD COSWAY, R.A.

FROM THE COLLECTION OF LORD HOTHFIELD



H.R.H. PRINCESS CHARLOTTE OF WALES
(1796-1817)
BY RICHARD COSWAY, R.A.

FROM THE COLLECTION OF LORD HOTHFIELD



HENRY TUFTON, ELEVENTH AND LAST EARL OF THANET
(1775-1849)
BY RICHARD COSWAY, R.A.

FROM THE COLLECTION OF LORD HOTHFIELD

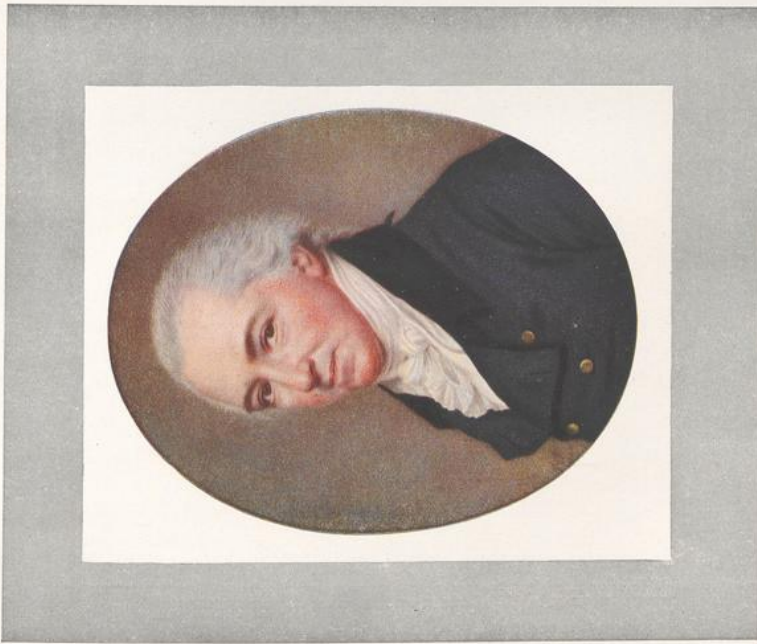


SIR CHARLES OAKELEY
(1751-1826)
BY JOHN SMART



PORTRAIT OF A LADY
(NAME UNKNOWN)
BY JOHN SMART

BOTH FROM THE COLLECTION OF MR. J. PIERPONT MORGAN

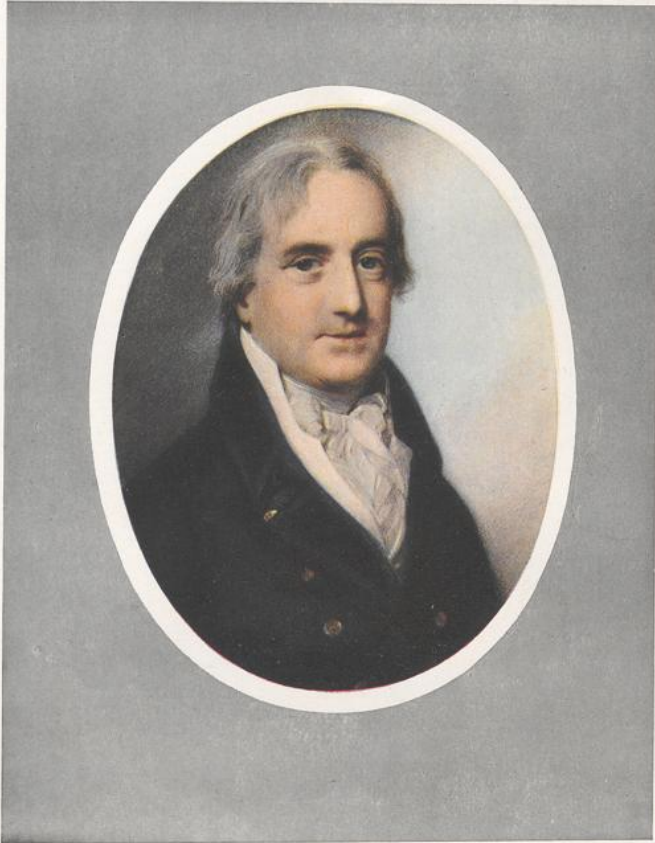


THE HON. EDWARD PERCIVAL, SECOND SON OF JOHN, SECOND EARL OF EGMONT
(1744-1824)
BY JOHN SMART (1801)



THE HON. MRS. EDWARD PERCIVAL
BY JOHN SMART

BOTH FROM THE COLLECTION OF LORD HOTHFIELD



EARL BEAUCHAMP
BY GEORGE ENGLEHEART (1805)

FROM THE COLLECTION OF LADY MARIA PONSONBY

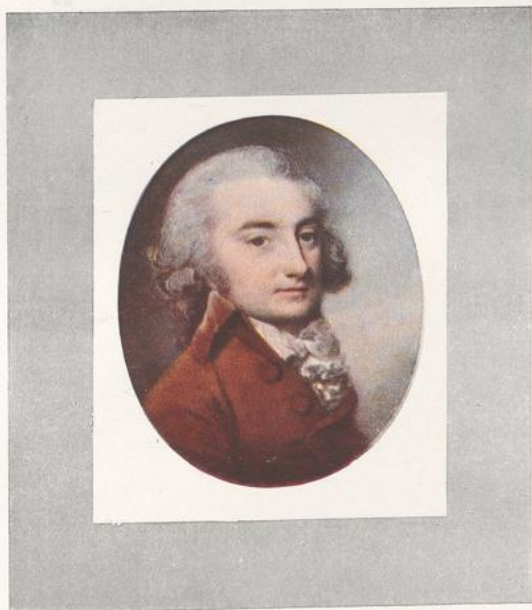


MISS MARY BERRY
BY GEORGE ENGLEHEART

FROM THE COLLECTION OF MR. J. PIERPONT MORGAN



MRS. SAINTHILL
BY GEORGE ENGLEHEART



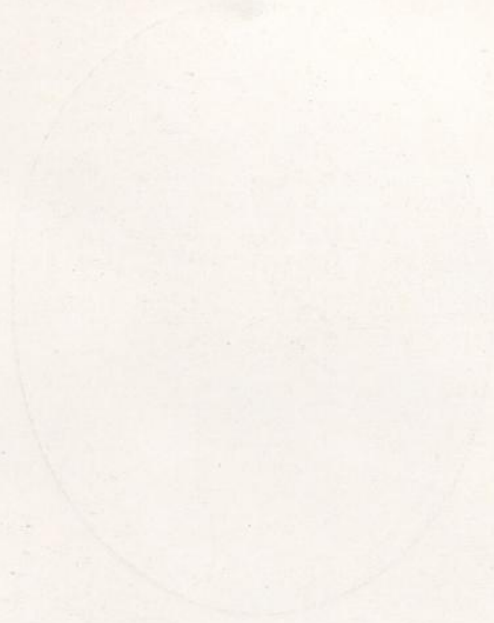
JOHN JELLIARD BRUNDISH, M.A. SMITH PRIZEMAN AND
SENIOR WRANGLER IN 1773
BY GEORGE ENGLEHEART

BOTH FROM THE COLLECTION OF LORD HOTHFIELD



REBECCA, LADY NORTHWICK
(Ob. 1818)
BY ANDREW PLIMER

FROM THE COLLECTION OF MR. J. PIERPONT MORGAN





THE HON. HARRIET RUSHOUT
(Ob. 1851)
BY ANDREW PLIMER

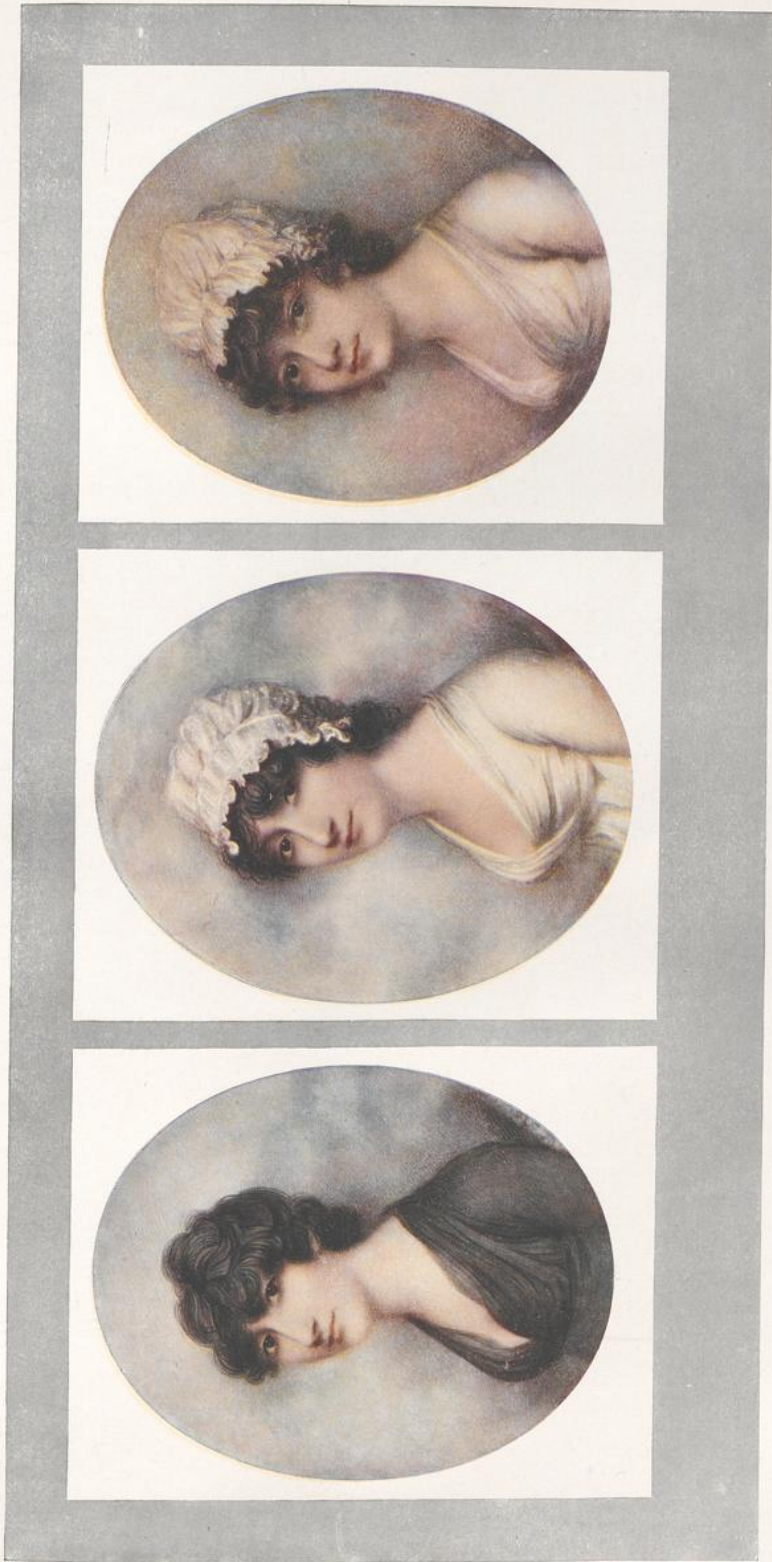


THE HON. ANNE RUSHOUT
(Ob. 1849)
BY ANDREW PLIMER



THE HON. ELIZABETH RUSHOUT
(Ob. 1862)
BY ANDREW PLIMER

ALL FROM THE COLLECTION OF MR. J. PIERPONT MORGAN



ELIZABETH, MARGARET CAROLINE AND ANTOINETTE, DAUGHTERS OF JOHN ELLIS, ESQ.
OF HURLINGHAM, MIDDLESEX AND JAMAICA
BY ANDREW PLIMER

ALL FROM THE COLLECTION OF LORD HOTHFIELD



SELINA PLIMER
BY ANDREW PLIMER

FROM THE COLLECTION OF DR. G. C. WILLIAMSON



THE SISTERS RUSHOUT
BY ANDREW PLIMER

FROM THE COLLECTION OF LORD HOTHFIELD

10000



MRS. BAILEY, WIFE OF LIEUTENANT BAILEY, WHO WAS PRESENT AT THE
STORMING OF SERINGAPATAM IN 1799
BY ANDREW PLIMER

FROM THE COLLECTION OF LORD HOTHFIELD



SIR CHARLES KENT, BART., AS A CHILD
BY ANDREW PLIMER (1786)

FROM THE COLLECTION OF LADY MARIA PONSONBY



MRS. DAWES
BY NATHANIEL PLIMER (1798)

FROM THE COLLECTION OF LORD HOTHFIELD



CHARLOTTE, DUCHESS OF ALBANY, DAUGHTER OF
CHARLES EDWARD STUART BY CLEMENTINA,
TENTH DAUGHTER OF JOHN WALKENSHAW
(1753-1789)
BY OZIAS HUMPHRY



MARY, WIFE OF THE EIGHTH EARL OF THANET
(OB. 1778)
BY OZIAS HUMPHRY

BOTH FROM THE COLLECTION OF LORD HOTHFIELD



LIEUTENANT LYGON
BY JOHN SMART, JUN. (1803)

FROM THE COLLECTION OF LADY MARIA PONSONBY

BRITISH MUSEUM



LADY MARY ELIZABETH NUGENT, AFTERWARDS MAR-
CHIONESS OF BUCKINGHAM, AND IN HER OWN RIGHT,
BARONESS NUGENT
(OB. 1812)
BY HORACE HONE

FROM THE COLLECTION OF LORD HOTHFIELD



THE RT. HON. WILLIAM PITT
BY HORACE HONE

FROM THE COLLECTION OF LADY MARIA PONSONBY



MISS VINCENT
BY VASLET OF BATH

FROM THE COLLECTION OF LORD HOTHFIELD

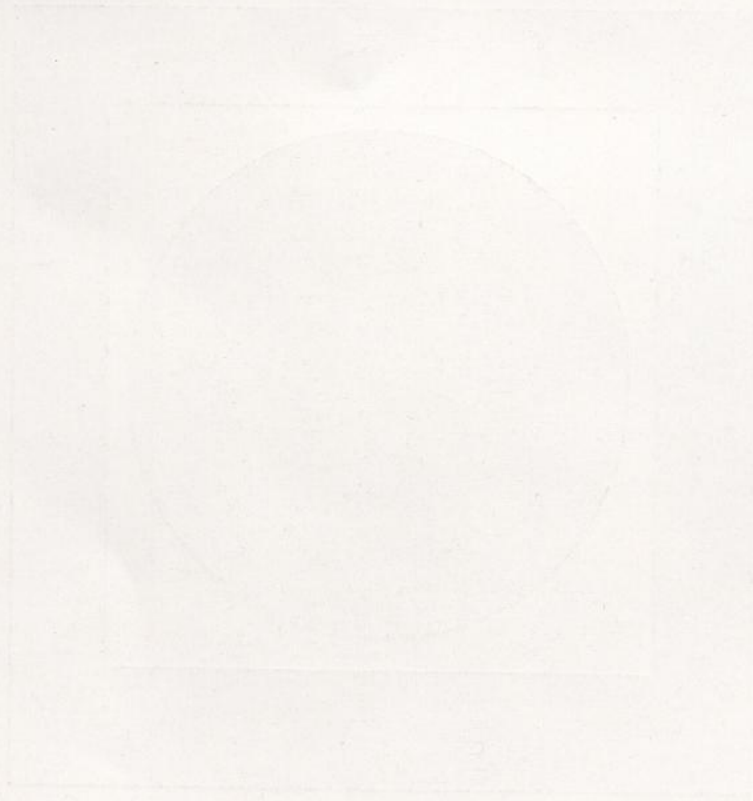
1770



THE COUNTESS OF JERSEY
BY SIR GEORGE HAYTER (1819)

FROM THE COLLECTION OF LADY MARIA PONSONBY

BRITISH MUSEUM





LOUIS XIV
BY JEAN PETITOT, THE ELDER

FROM THE COLLECTION OF MR. J. WARD USHER



CHARLES I.
BY P. PRIEUR



MARY, DUCHESS OF RICHMOND AND LENOX
(1623-1685)
BY JEAN PETITOT THE ELDER (1643)

BOTH FROM THE COLLECTION OF MR. J. PIERPONT MORGAN



MADAME DUPIN
(Ob. 1799)
BY JEAN MARC NATTIER



THE COUNTESS SOPHIE POTOCKI
(Ob. 1822)
BY P. A. HALL



LA PRINCESSE DE LAMBALLE
(Ob. 1792)
BY P. A. HALL

ALL FROM THE COLLECTION OF MR. J. PIERPONT MORGAN



PORTRAIT OF A BOY
(NAME UNKNOWN)
BY JEAN HONORÉ FRAGONARD



PORTRAIT OF A LADY
(NAME UNKNOWN)
BY PIERRE PASQUIER (1786)

BOTH FROM THE COLLECTION OF MR. J. PIERPONT MORGAN

PIERPONT MORGAN



A GRAND-DAUGHTER OF NATTIER, THE ARTIST
BY LOUIS SICARDI



LA MARQUISE DE VILLETTE
("BELLE ET BONNE")
BY GARRIOT

BOTH FROM THE COLLECTION OF MR. J. PIERPONT MORGAN





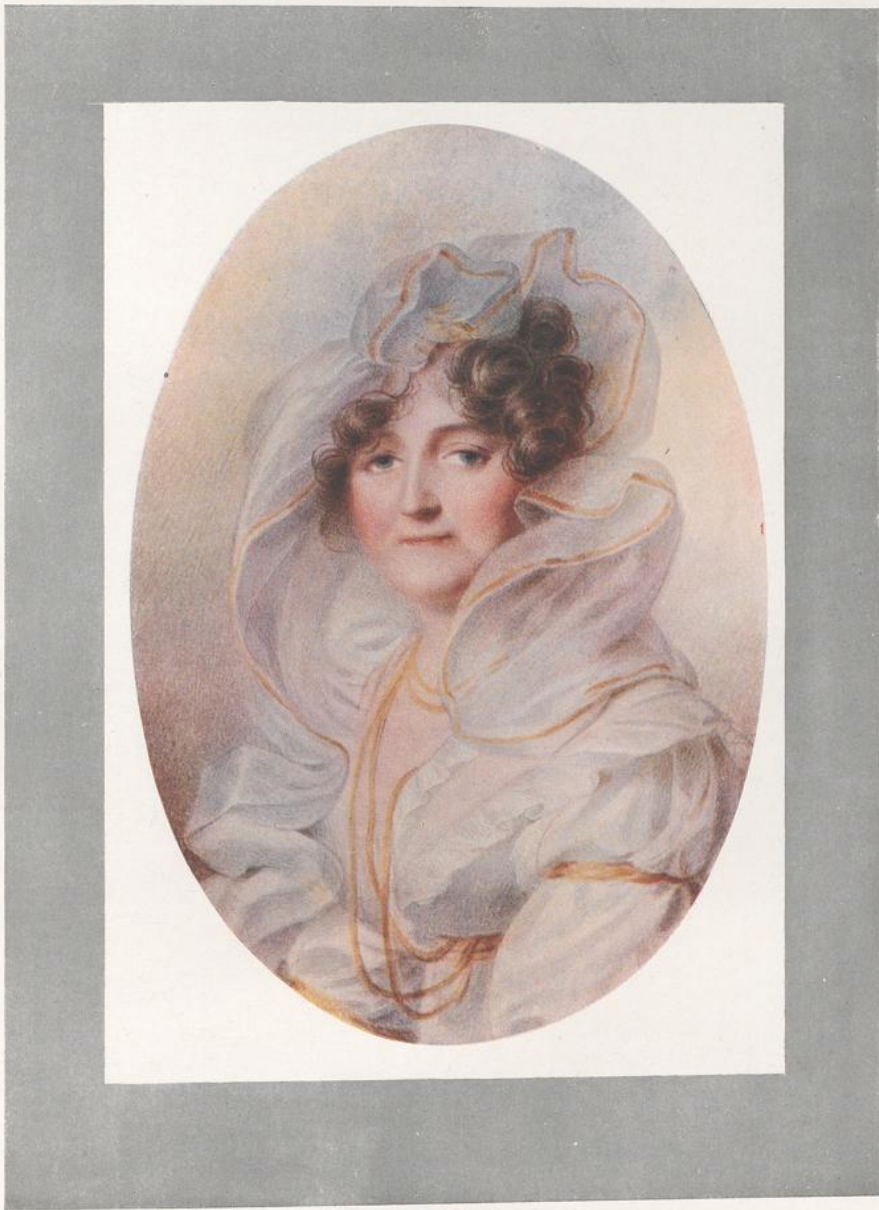
THE EMPRESS MARIE LOUISE
BY JEAN BAPTISTE ISABEY



THE EMPRESS JOSEPHINE
BY JEAN BAPTISTE ISABEY

BOTH FROM THE COLLECTION OF MR. J. WARD USHER





CATHARINE, COUNTESS BEAUCHAMP
BY JEAN BAPTISTE ISABEY

FROM THE COLLECTION OF LADY MARIA PONSONBY

1785



FÜRSTIN KATHARINA BAGRATION SKAWRONSKA
BY JEAN BAPTISTE ISABEY (1812)

FROM THE COLLECTION OF FÜRST FRANZ AUERSPERG

AUERSPERG

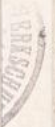


LA PRINCESSE DE LIEVEN
(NÉE DOROTHY BENCKENDORFF)
(1784-1857)
BY E. W. THOMPSON



QUEEN HORTENSE AND HER SON, AFTERWARDS NAPOLEON III
(1808-1873)
BY JEAN BAPTISTE ISABEY

BOTH FROM THE COLLECTION OF MR. J. PIERPONT MORGAN





MADAME DE BOUFFLERS
(1725-1800)
BY J. B. JACQUES AUGUSTIN



THE FATHER OF MADAME SEGUIN
BY J. B. JACQUES AUGUSTIN

BOTH FROM THE COLLECTION OF MR. J. PIERPONT MORGAN

PIERPONT MORGAN



MADAME RÉCAMIER
BY J. B. JACQUES AUGUSTIN

FROM THE COLLECTION OF MR. J. WARD USHER





MARIE ANTOINETTE
BY M. V. COSTA

FROM THE COLLECTION OF MR. J. WARD USHER

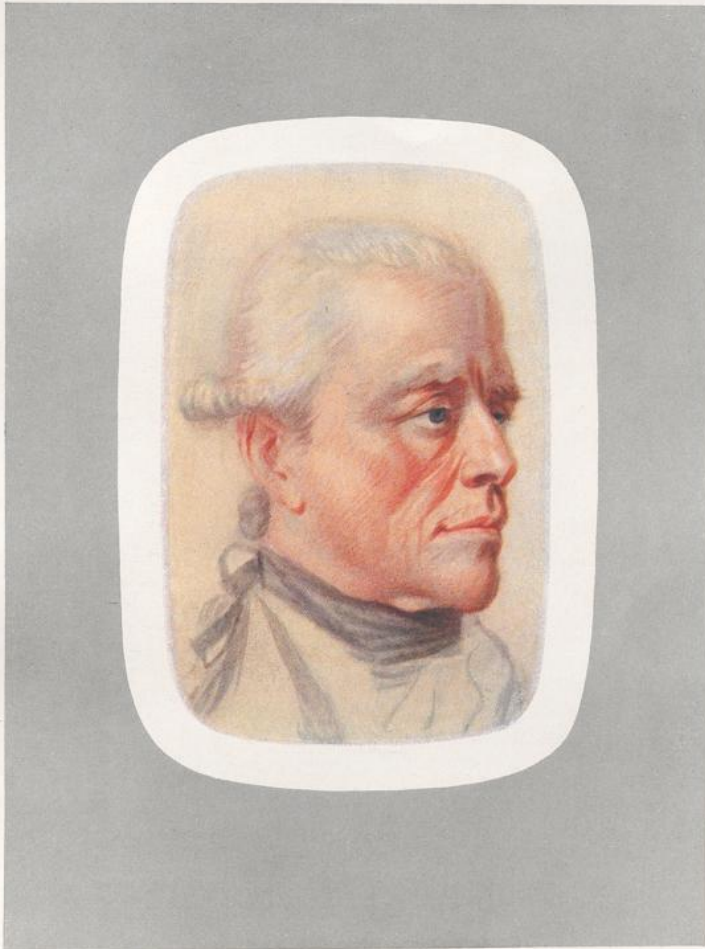




PRINCESS PAULINE BORGHESE
BY B. ANGISSOLA

FROM THE COLLECTION OF MR. J. WARD USHER





PRINCE FRANZ W. HOHENLOHE
BY HEINRICH FRIEDRICH FÜGER

FROM THE FIGDOR COLLECTION





PORTRAIT OF A LADY—NAME UNKNOWN
BY HEINRICH FRIEDRICH FÜGER (CIRCA 1790)



FROM THE FIGDOR COLLECTION



EMPRESS MARIA THERESIA, SECOND WIFE OF THE EMPEROR FRANCIS I OF AUSTRIA
BY HEINRICH FRIEDRICH FÜGER

FROM THE FIGDOR COLLECTION



MARIE THERESIA, COUNTESS VON DIETRICHSTEIN
BY HEINRICH FRIEDRICH FÜGER

FROM THE FIGDOR COLLECTION



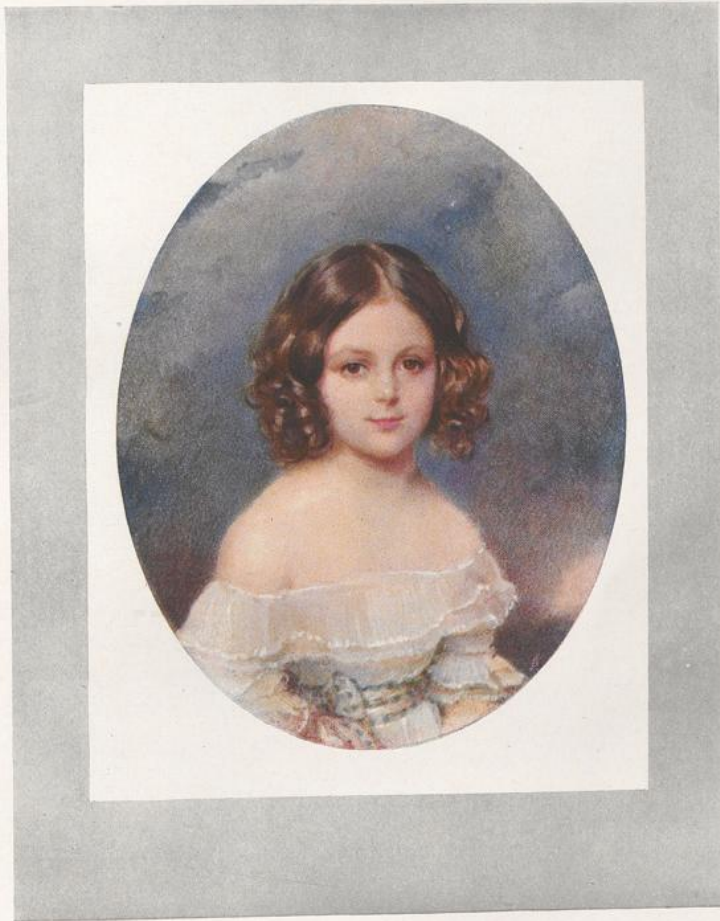
FÜRSTIN ANNA LIECHTENSTEIN-KHEVENHÜLLER
BY HEINRICH FRIEDRICH FÜGER (CIRCA 1795)

FROM THE FIGDOR COLLECTION



PORTRAIT OF THE ARTIST
BY GIOVANNI BATTISTA DE LAMPI

FROM THE FIGDOR COLLECTION



GRÄFIN SOPHIE NARISKINE
BY MORITZ MICHAEL DAFFINGER (CIRCA 1835)

FROM THE COLLECTION OF GRÄFIN EMMA WILCZEK-EMO-CAPODILISTA



GRÄFIN SIDONIE POTOCKA—DE LIGNE
BY EMANUEL PETER



PORTRAIT OF A LADY—NAME UNKNOWN
BY EMANUEL PETER



PORTRAIT OF THE ARTIST
(1793-1865)
BY FERDINAND GEORG WALDMÜLLER

FROM THE FIGDOR COLLECTION

