



UNIVERSITÄTS-
BIBLIOTHEK
PADERBORN

Die Ziegelei als landwirtschaftliches und selbständiges Gewerbe

Bock, Otto

Berlin, 1905

Tafeln

[urn:nbn:de:hbz:466:1-78907](https://nbn-resolving.org/urn:nbn:de:hbz:466:1-78907)



Fig. 67. Ringofen mit unterem Rauchabzug. System Hoffmann.

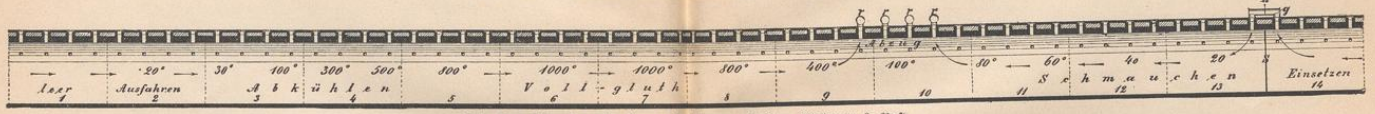


Fig. 68. Ringofen mit oberem Rauchabzug. System Siehmon & Rost.

Dampfziegelei Dülmen der Rheinischen Sandwerke, Düsseldorf.
(Zu Seite 169.)

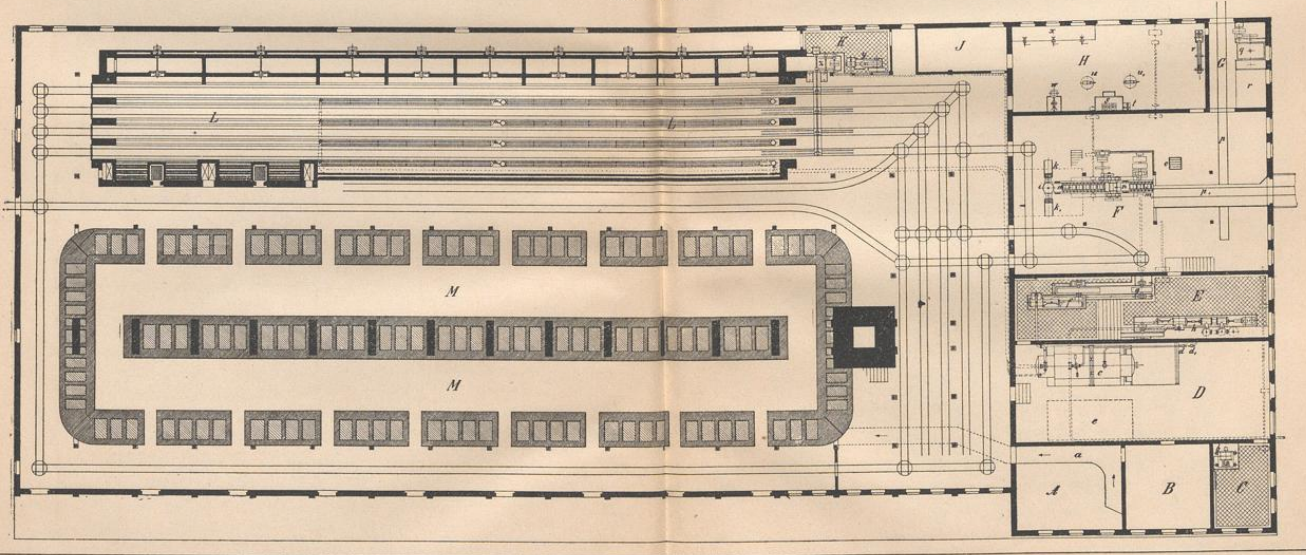
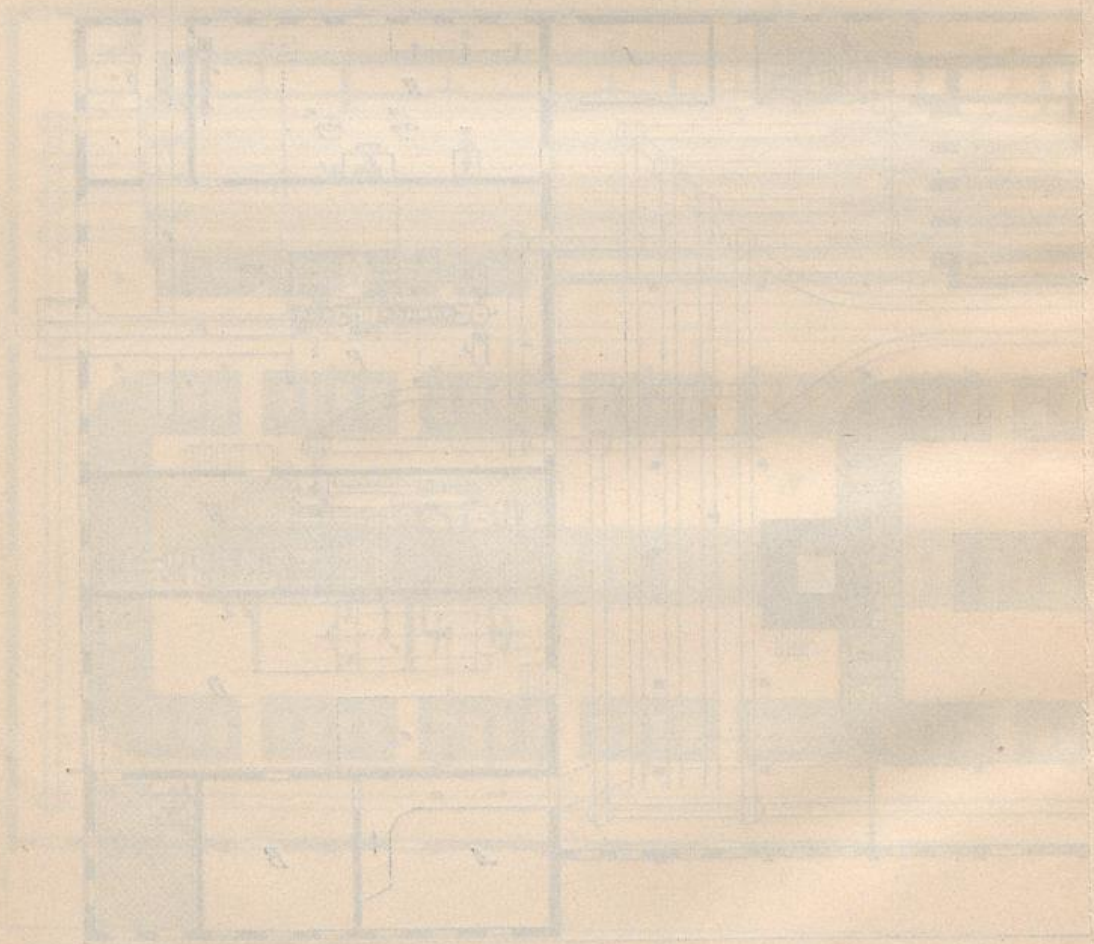
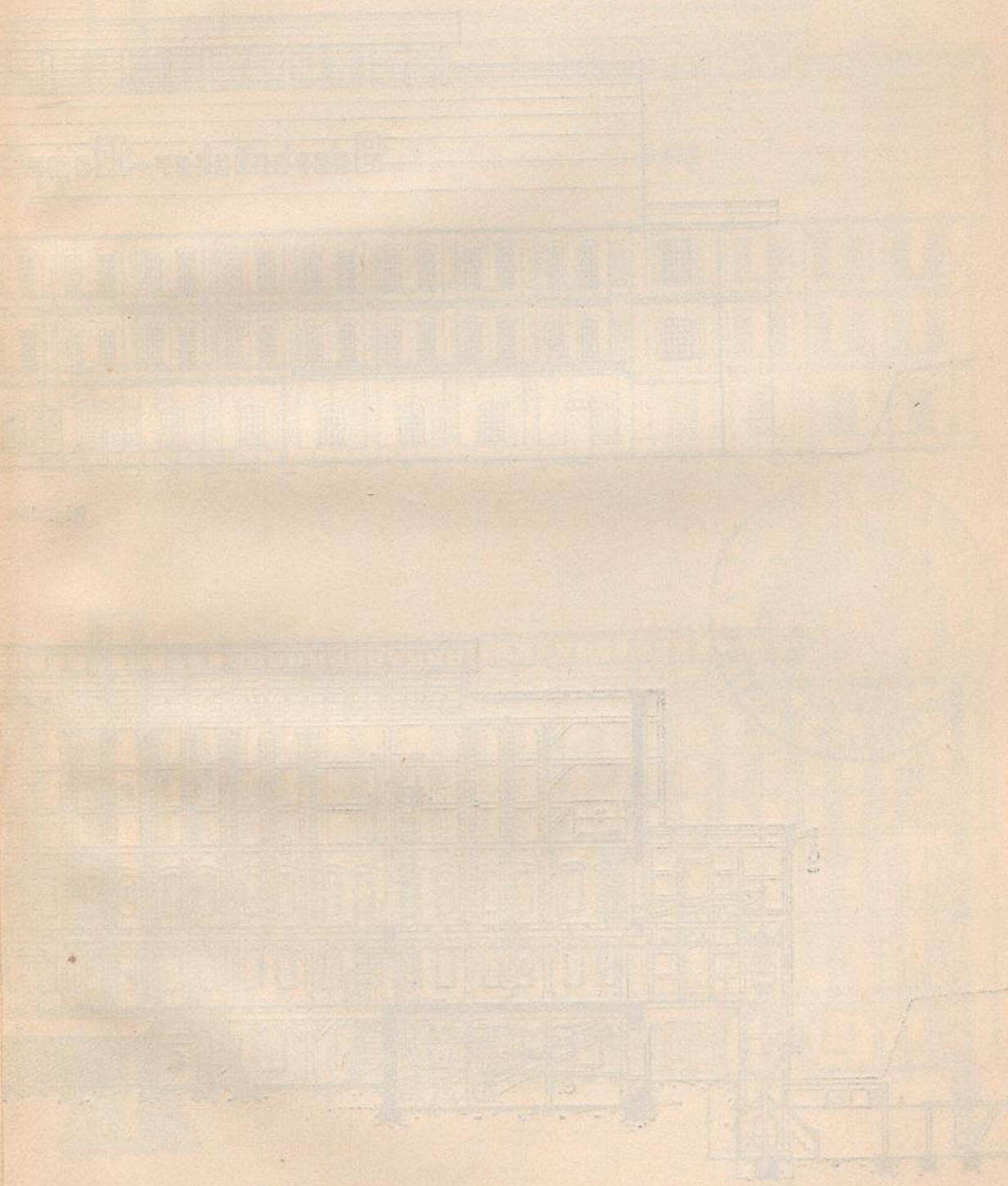


Fig. 157. Grundriß.

Verlagsbuchhandlung Paul Parey in Berlin SW., Hedemannstrasse 10.





(Zu Seite 163.)

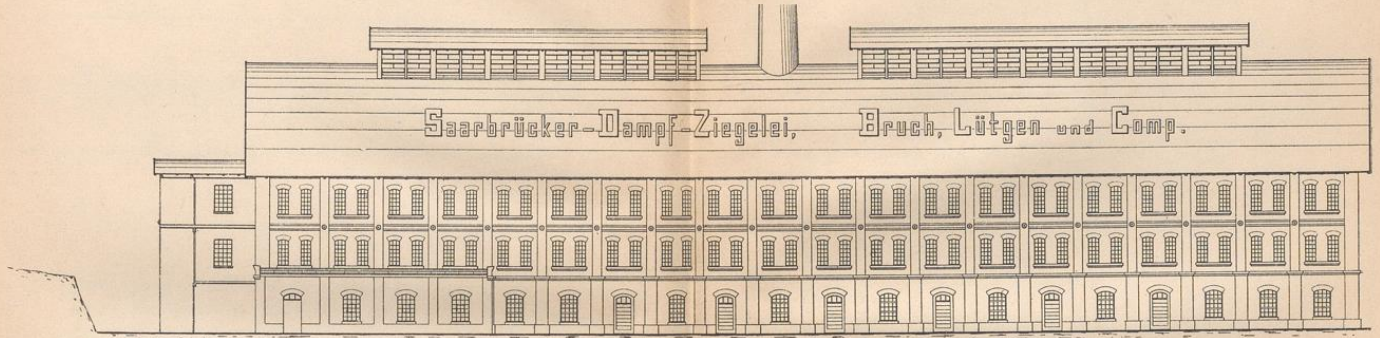


Fig. 148. Ansicht.

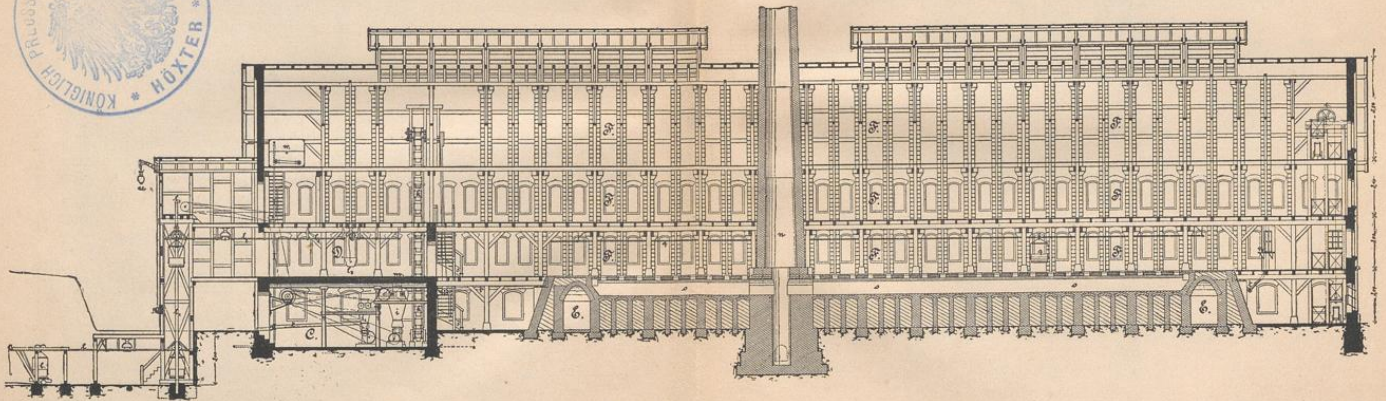
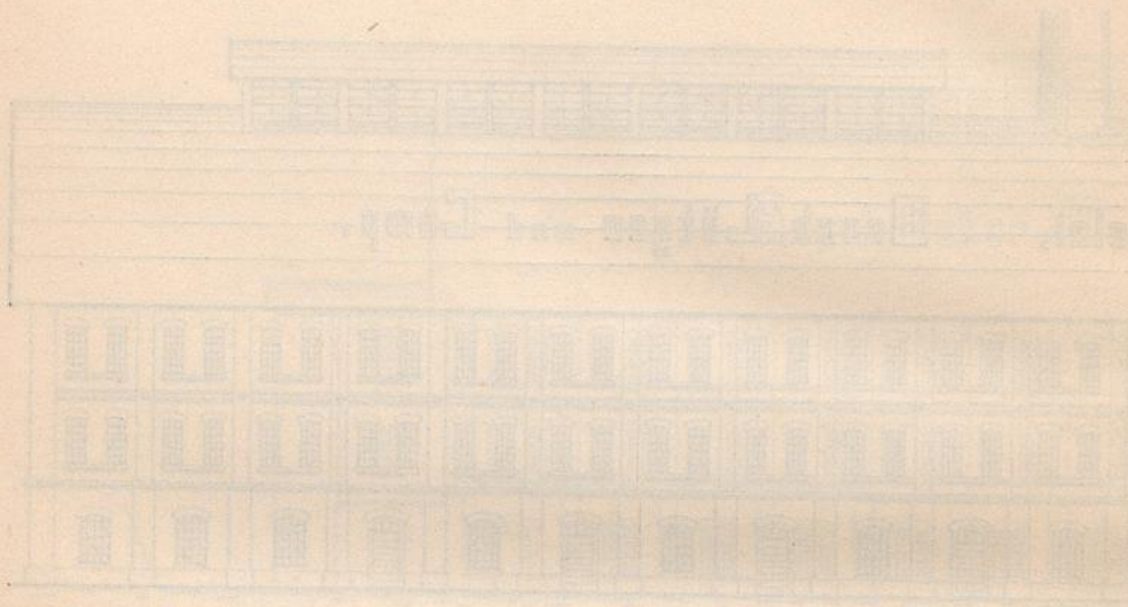


Fig. 149. Längsschnitt.

Verlagsbuchhandlung Paul Parey in Berlin SW., Hedemannstrasse 10.

1871

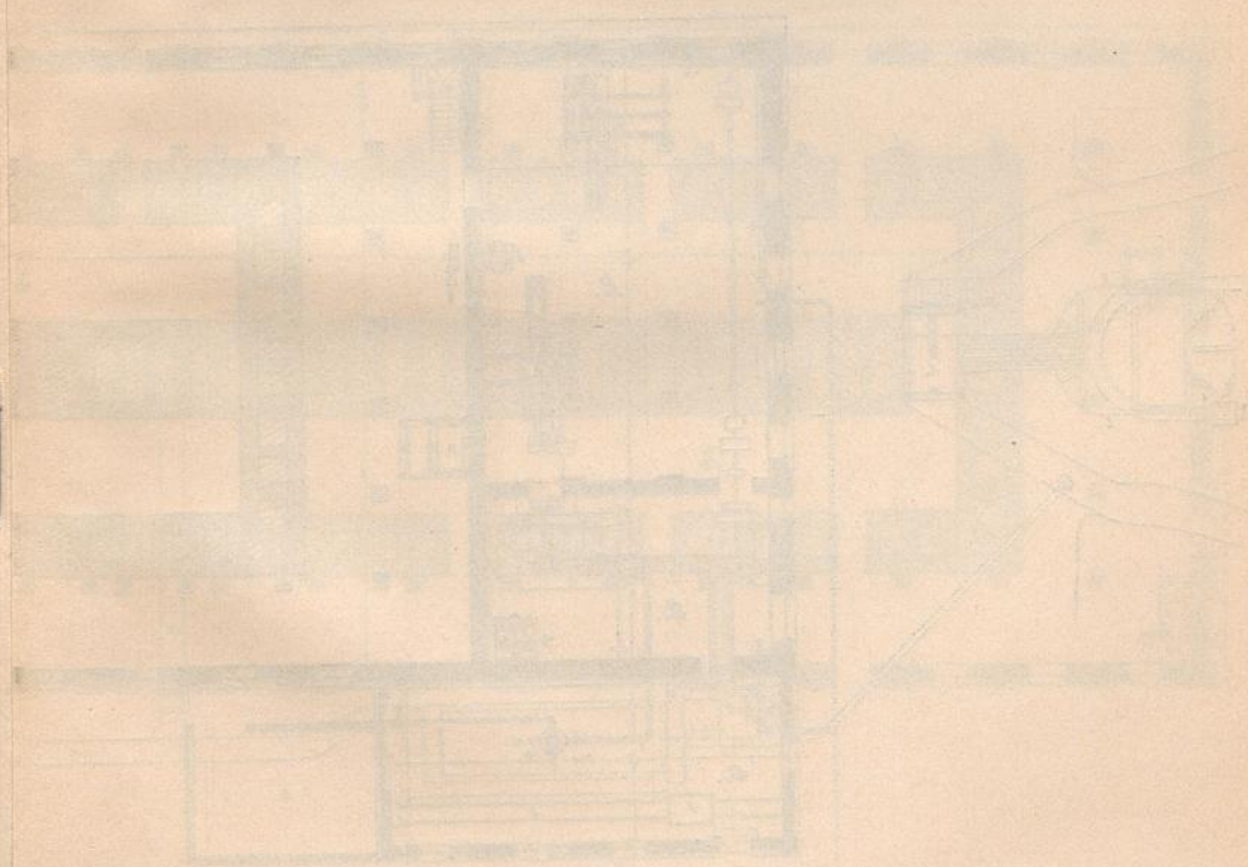
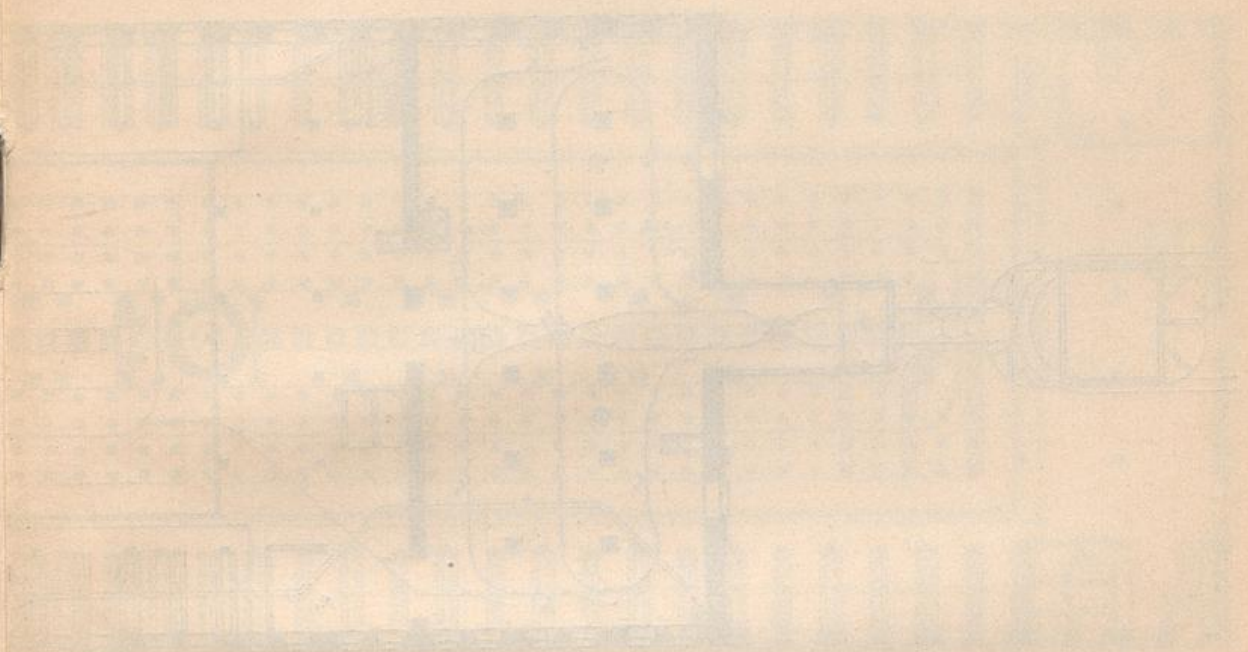
Verlagsgesellschaft



Verlagsgesellschaft

Handwritten text at the top left, likely a page number or title.

Handwritten text at the top right, possibly a date or reference.



Handwritten text at the bottom left, possibly a signature or date.

Handwritten text at the bottom right, possibly a title or description.

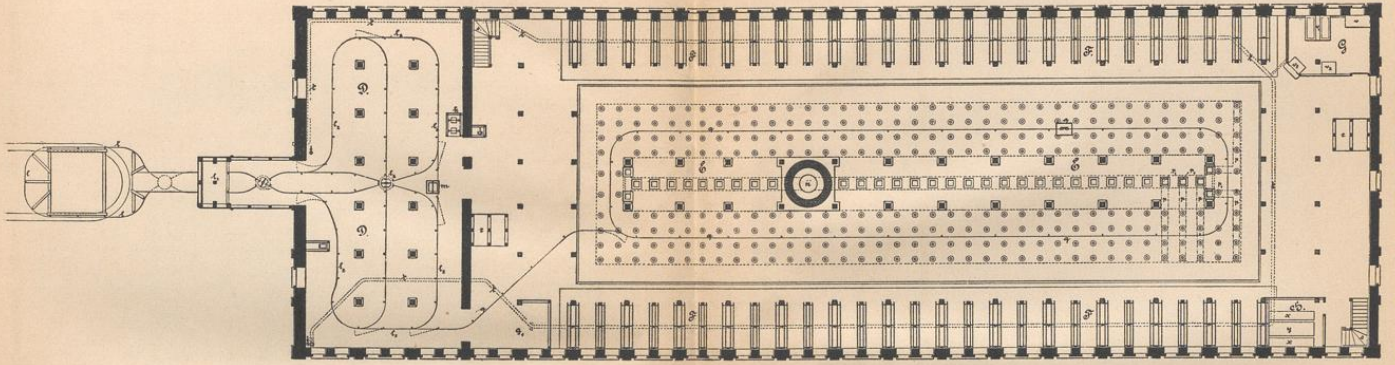


Fig. 150. Grundriß vom ersten Obergeschoß.

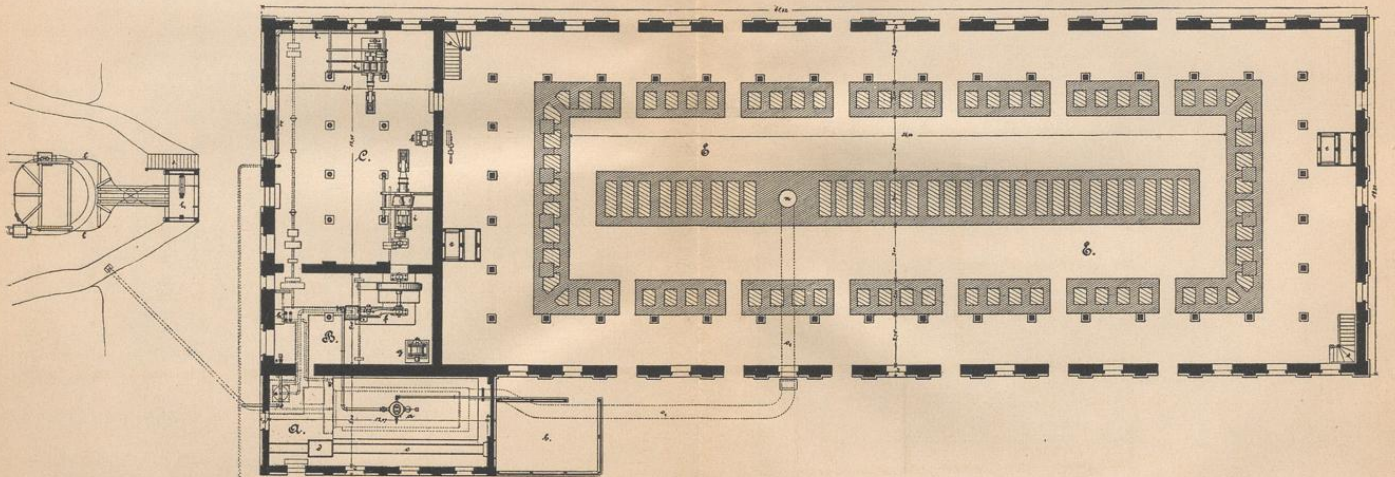
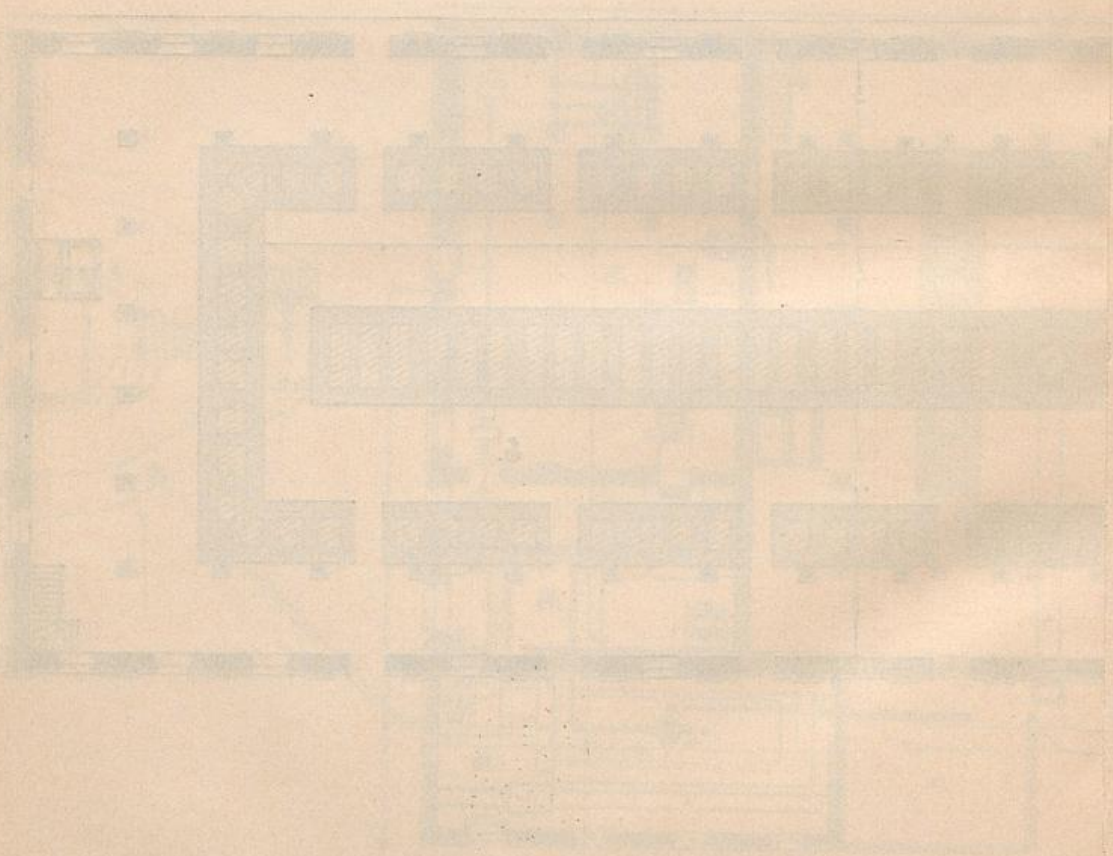
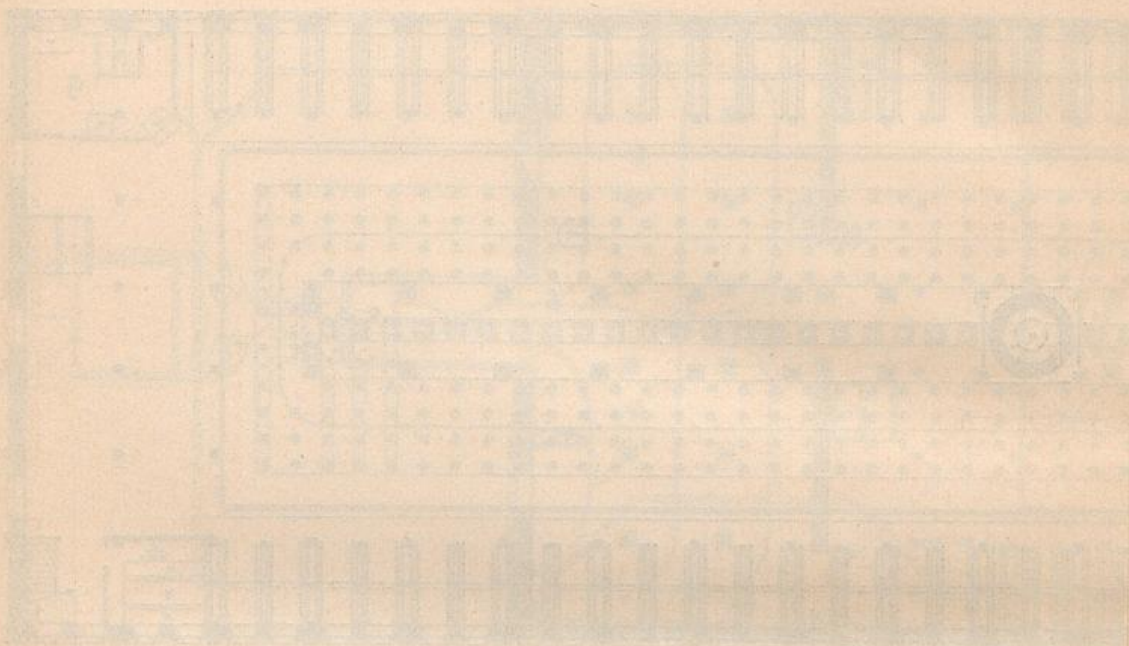


Fig. 151. Grundriß vom Erdgeschoß.

Verlagsbuchhandlung Paul Parey in Berlin SW., Hedemannstrasse 10.



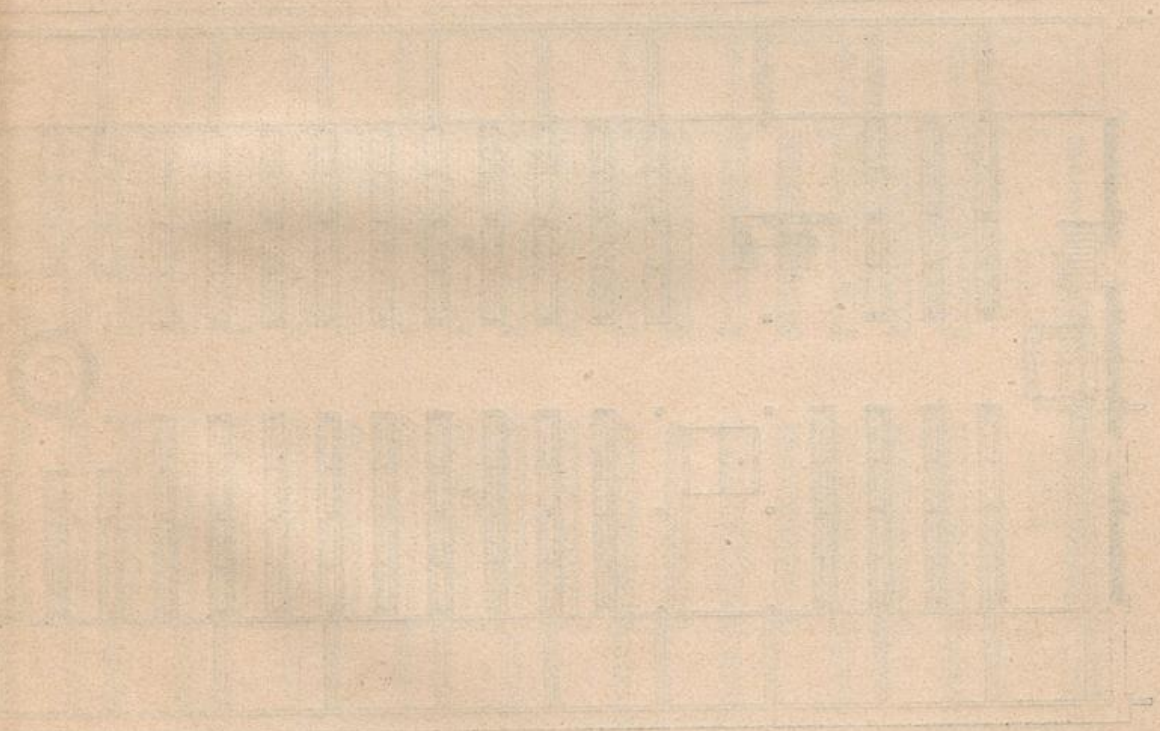
Vorstandsmitglied Paul Feyer in Berlin SW., Heilmannstr. 10

Geometrische Optik

1787



Geometrische Optik



Geometrische Optik

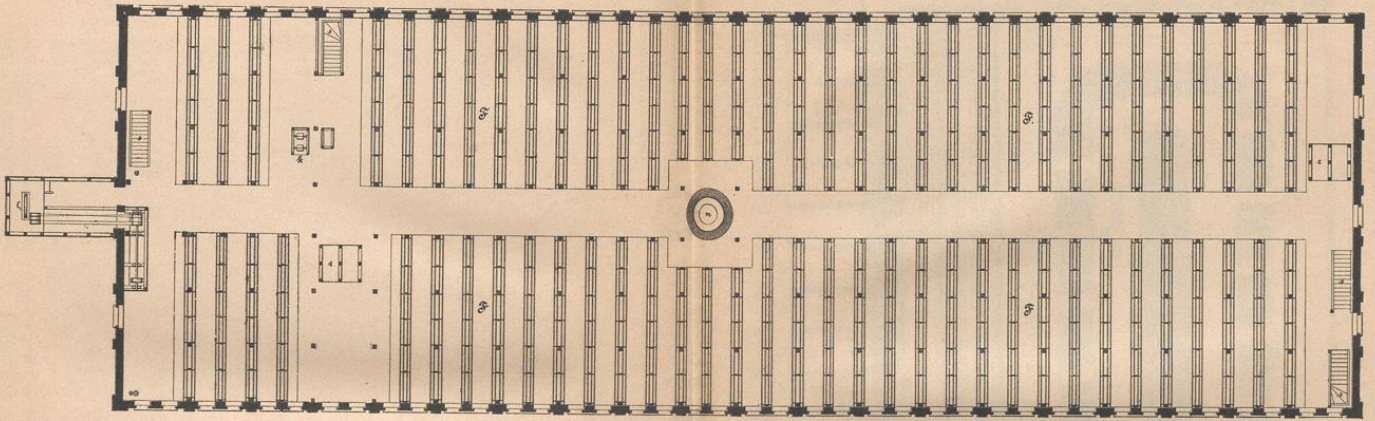


Fig. 152. Grundriß vom zweiten Obergeßoß.

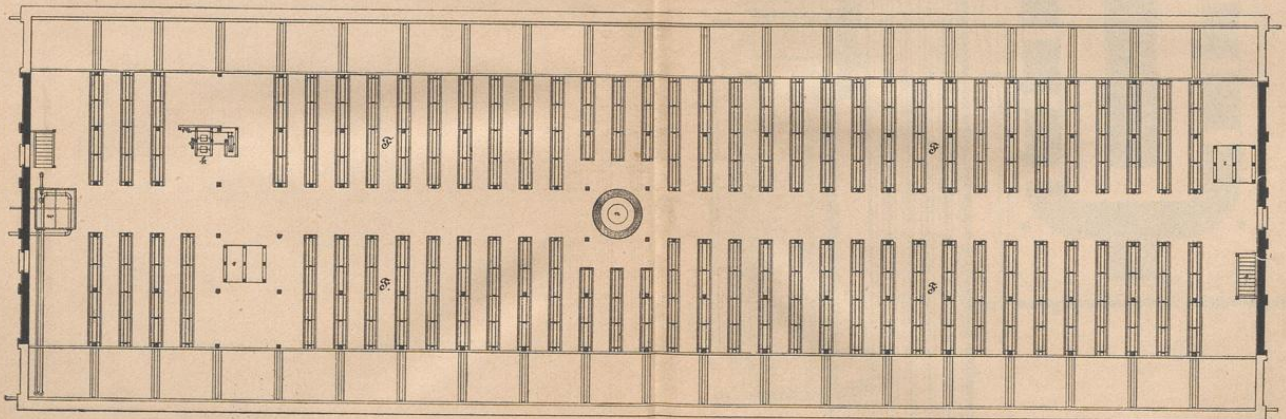


Fig. 153. Grundriß vom Dachgeßoß.

Verlagsbuchhandlung Paul Parey in Berlin SW., Hedemannstrasse 10.

Table with multiple columns and rows, containing faint handwritten entries. The table is divided into several sections by horizontal lines.

Table with multiple columns and rows, containing faint handwritten entries. The table is divided into several sections by horizontal lines.

Faint handwritten text at the bottom of the page, possibly a signature or date.

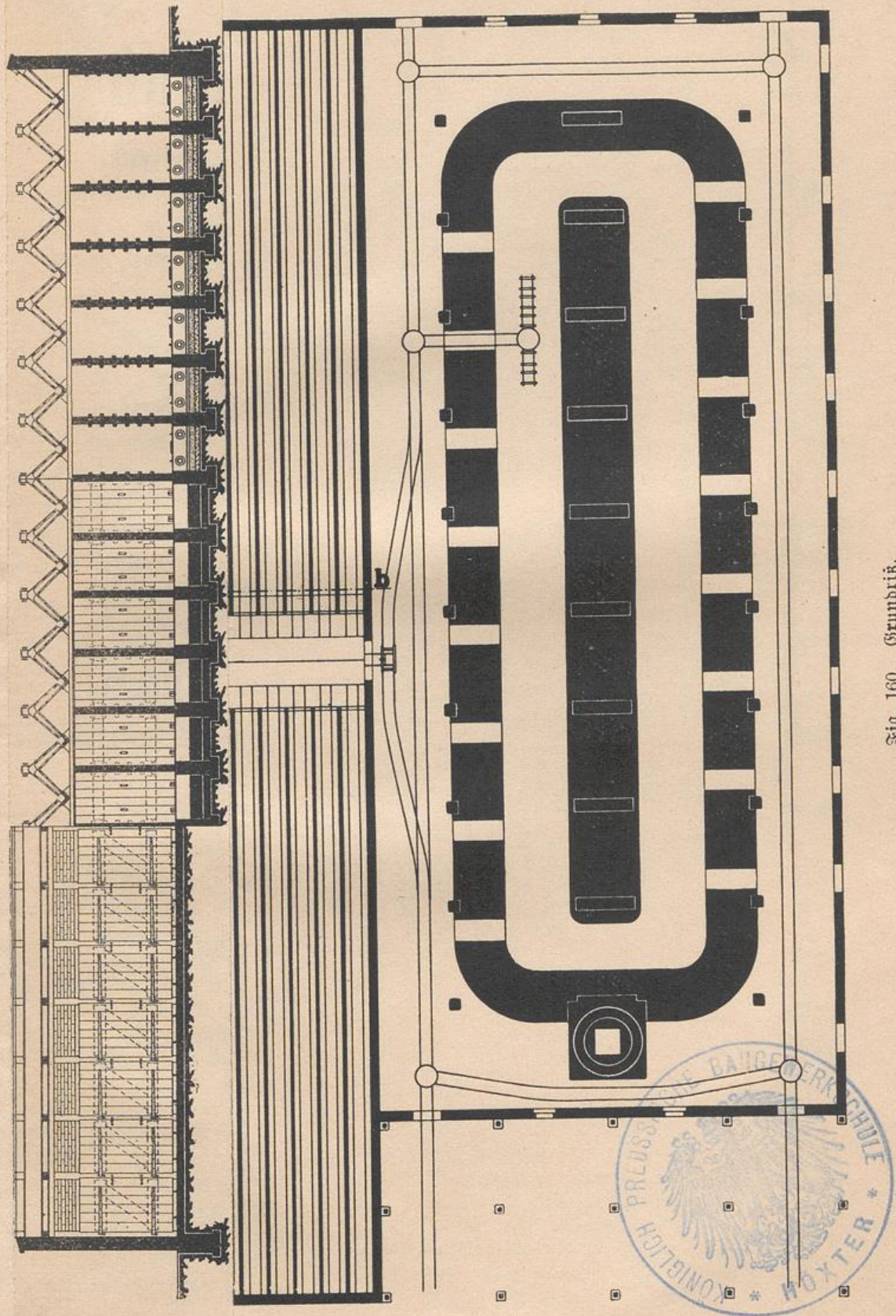


Fig. 160. Grundriß.

buchhandlung Paul Parey in Berlin SW., Hedemannstrasse 10.

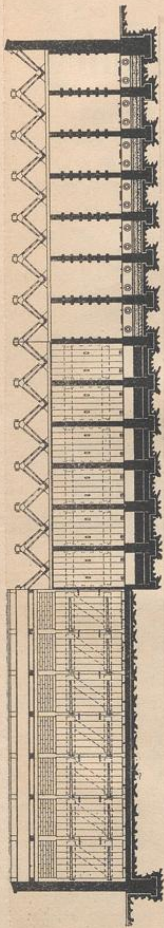


Fig. 161. Duerchschnitt nach a-b.

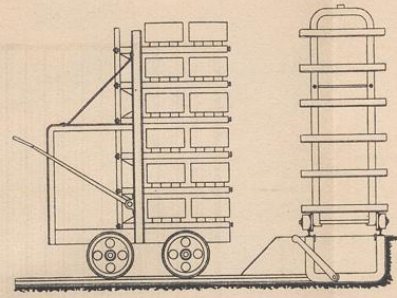


Fig. 162. Automatischer Wagen.

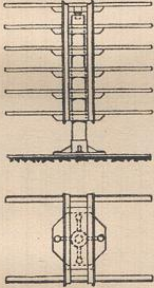


Fig. 163. Einfaches Drehgeraet.

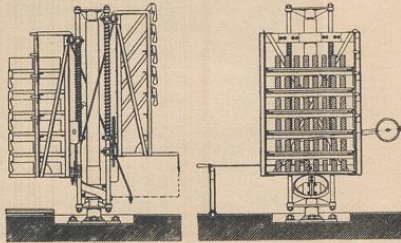


Fig. 164. Entbares Drehgeraet.

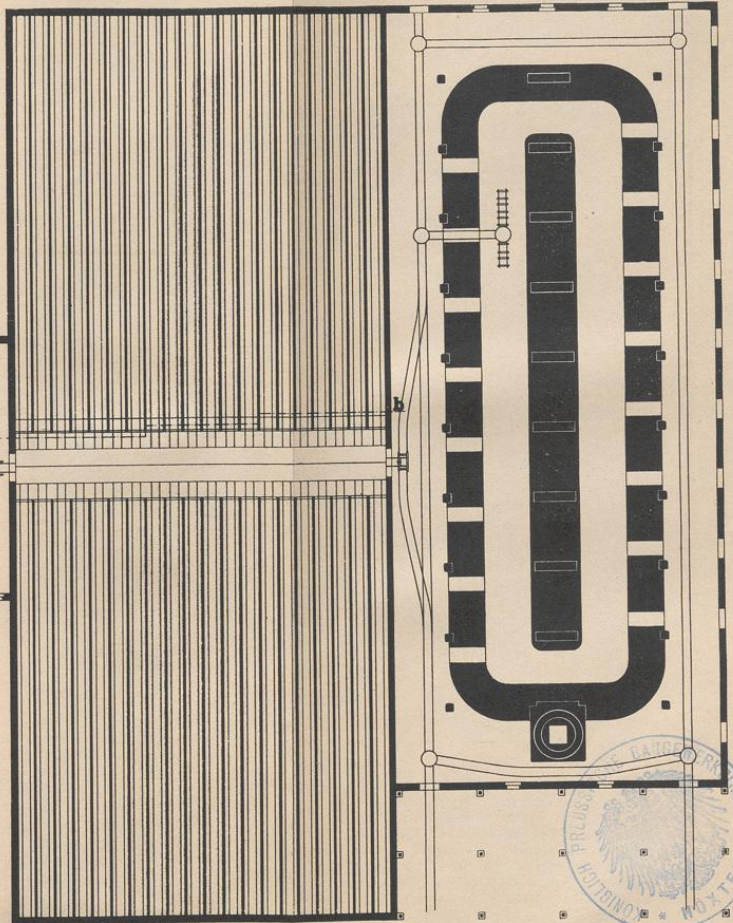
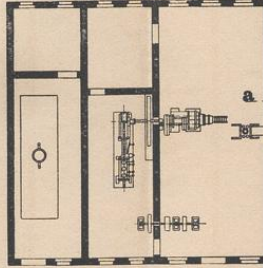


Fig. 160. Grundriss.



Verlagsbuchhandlung Paul Parey in Berlin SW., Hedemannstrasse 10.

