



UNIVERSITÄTS-
BIBLIOTHEK
PADERBORN

Musterentwürfe für Bauten im Regierungs-Bezirk Hildesheim

Regierungsbezirk Hildesheim

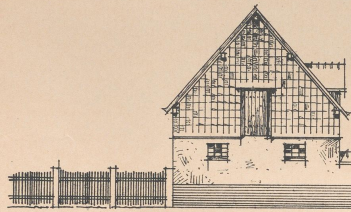
Hildesheim, 1909

VIII. Ländliche Gasthäuser

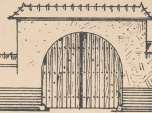
[urn:nbn:de:hbz:466:1-78797](https://nbn-resolving.org/urn:nbn:de:hbz:466:1-78797)

KOSTENBERECHNUNG:

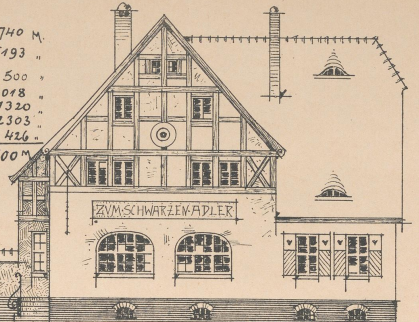
Wohnhaus: 2445 cbm zu je 12 M. 25740 M.
 Saal: 577 " " " 9 " 5193 "
 Abortgebäude 1000 " " " 9 " 500 "
 Stallgebäude 1000 " " " 9 " 9018 "
 Scheune 915 " " " 8 " 7320 "
 Schuppen 329 " " " 7 " 2303 "
 Nebenanlagen: " " " " 426 "
 Gesamtkosten: 50500 M.



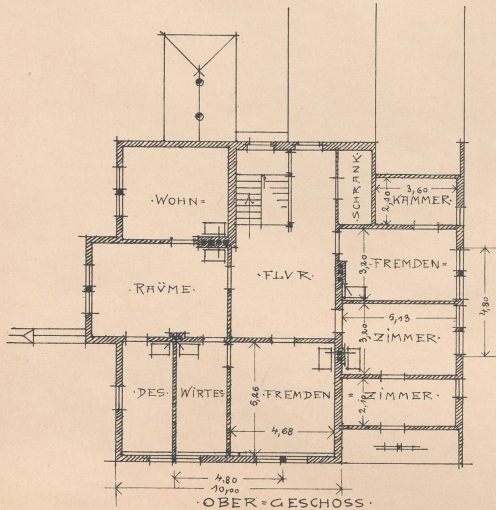
STALL.



ANSICHT VON SÜDEN.

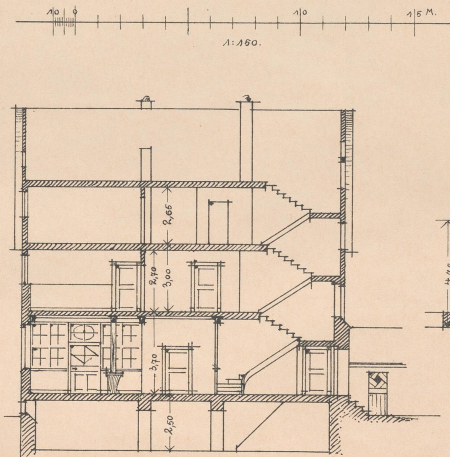


WOHNHAUS.

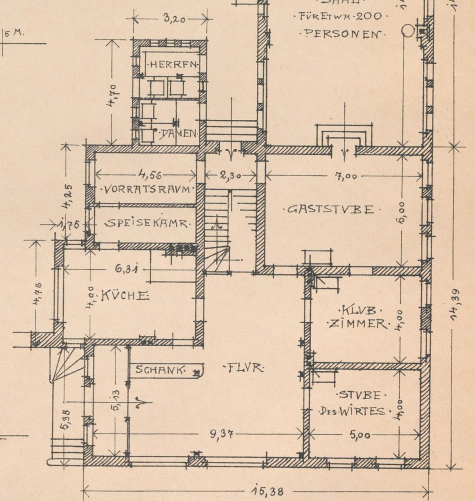


OBER-GESCHOSS.

IM DRÜCKGESCHOSS: GESINDEKAMMERN, RAUCHERKAMMER UND DERGLEICHEN.



SCHNITT DURCH FLUR UND TREPPE.



ERD-GESCHOSS.

HIERUNTER: KELLER.

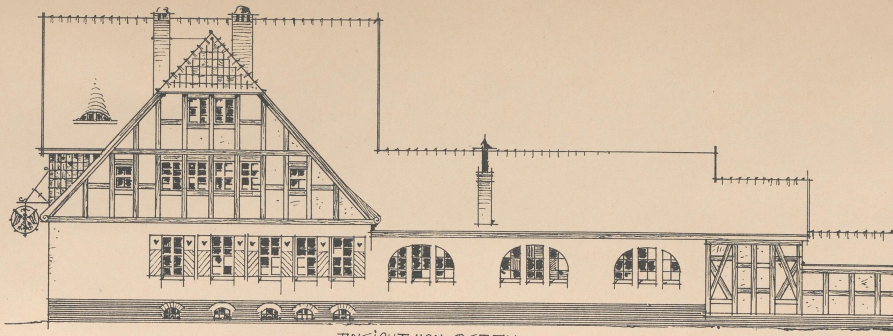
GOSLAR, Mai 1907.

Klein
 BAURAT

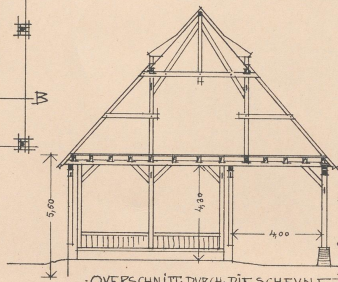
06
Wwf
1334



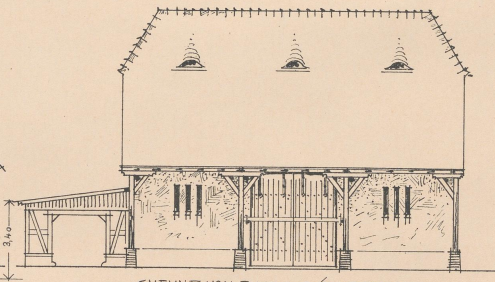
EK 787
KD/X



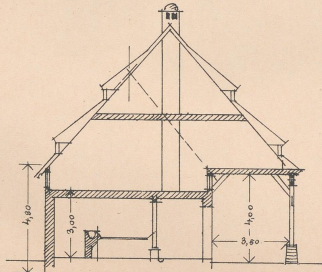
ANSICHT VON OSTEN.



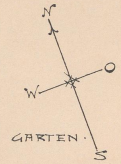
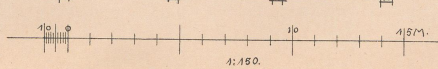
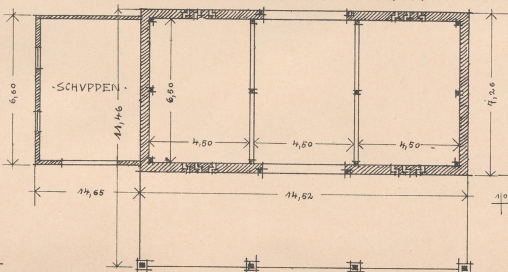
QUERSCHNITT DURCH DIE SCHEUNE.



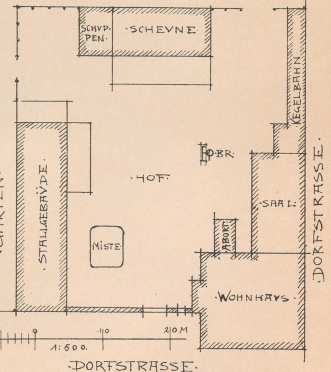
SCHNEIDEN VON RUND BOCKEN BERGERAUM.



QUERSCHNITT A-B DURCH DEN STALL.



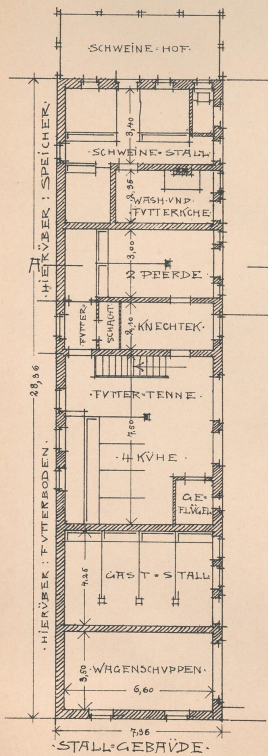
GARTEN.



DORFSTRASSE.

GOSLAR MAI 1907

BAVRAT.



STALLGEBÄUDE.

06
Wu.F
1334

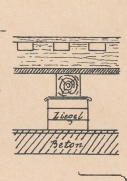
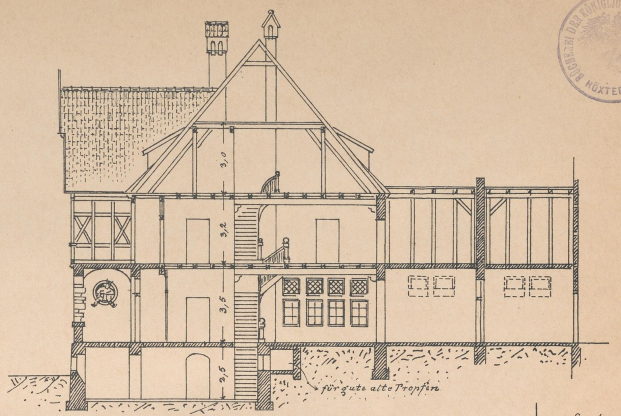
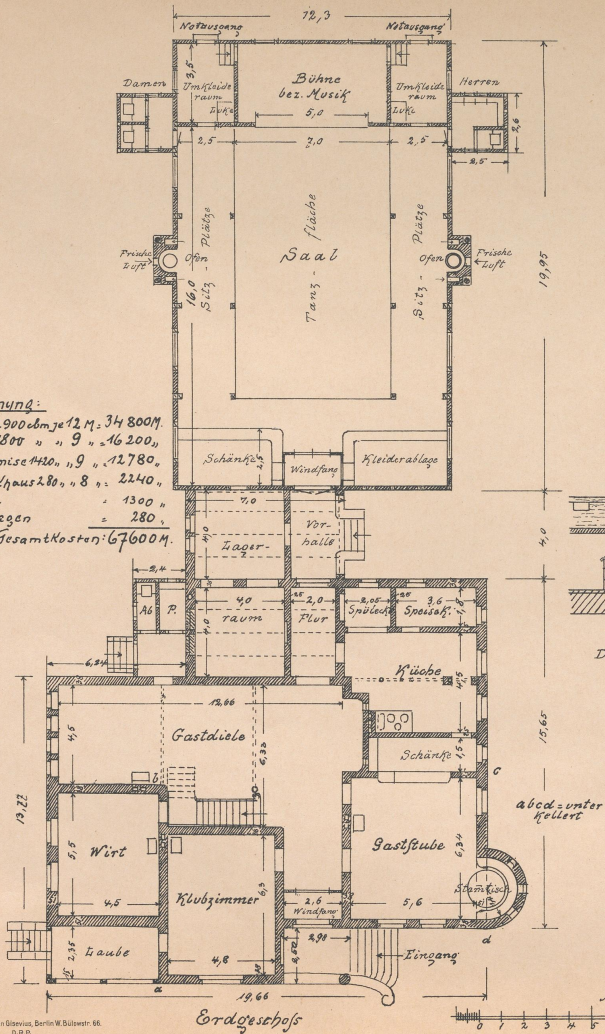


EK 787
KD/X

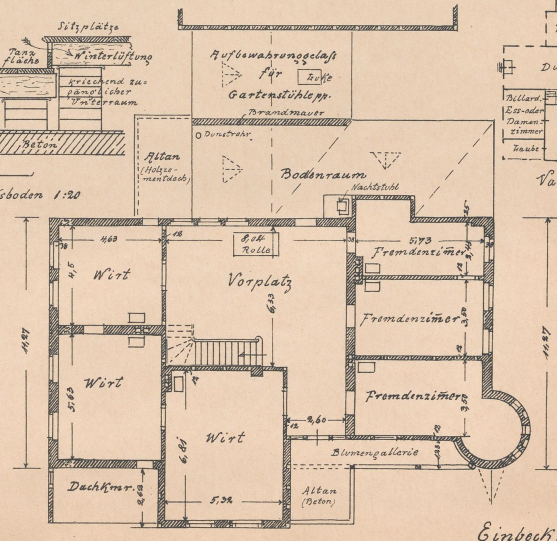


Kostenberechnung:

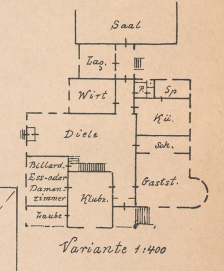
Gasthaus: 2900 qm je 12 M. 34 800 M.
Saal: 1800 „ „ 9 „ 16 200 „
Stall mit Remise 420 „ 9 „ 12 780 „
Wach- u. Backhaus 280 „ 8 „ 22 40 „
Kegelbahn „ 1300 „ „ „ „ „
Hebeanlagen „ 280 „ „ „ „ „
Gesamtkosten: 67 600 M.



Detail Saalfußboden 1:20



Obergeschoss



Variante 1:400

Bauabdruck v. Bogden Glorius, Berlin W. 9. 1907.
Verlag v. August Lex, Hildesheim.

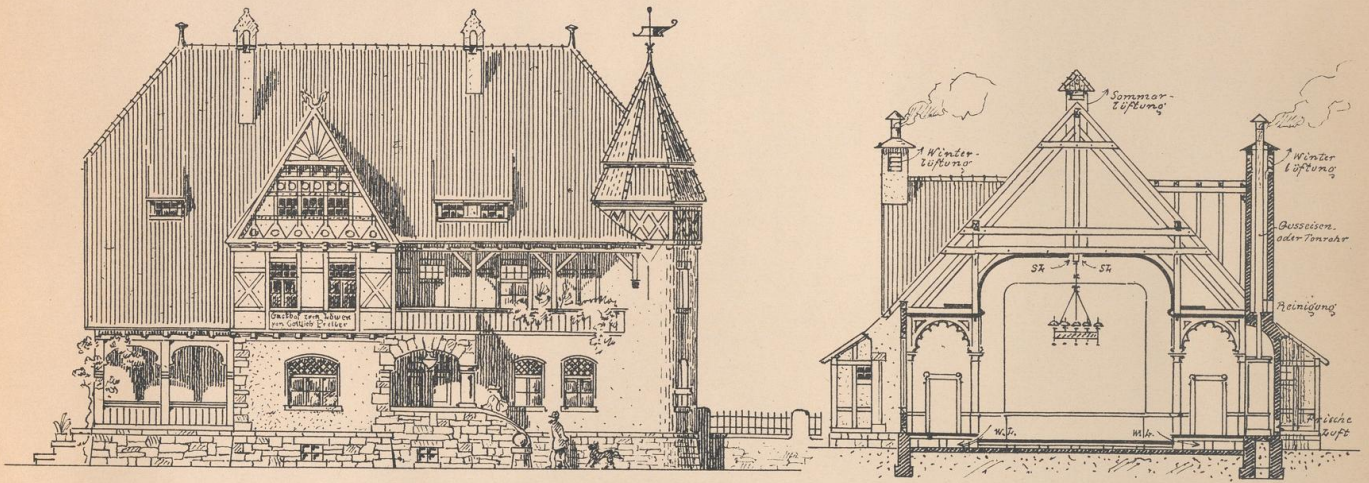
Einbeck. Nov. 1907
L. Zohr
Baurat

06
Wu F
1334



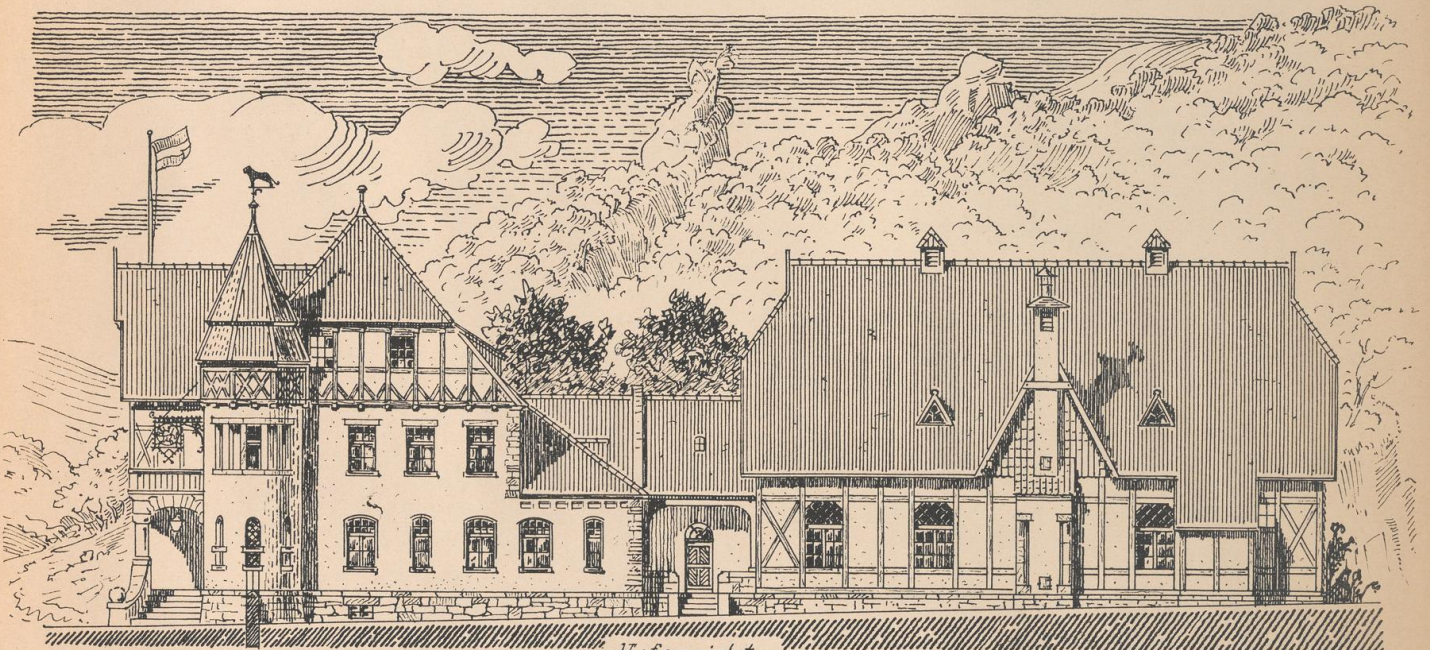
EK 787
KD / X

Ländliches Gasthaus.



Strassenansicht

Querschnitt durch den Saal.



Hofansicht



Gesamtdruck v. Bogdan Grisevius, Berlin W. Bülowstr. 66.
D.R.P.

Verlag v. August Lax, Hildesheim.

Einbeck. Nov. 1907

C. Molle

Baurat.

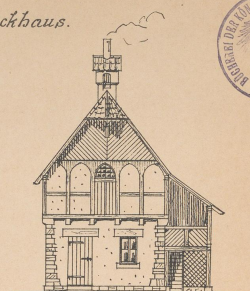
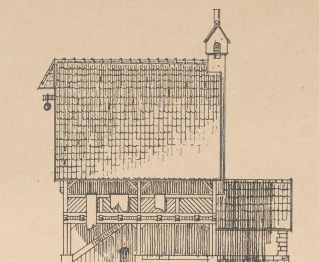
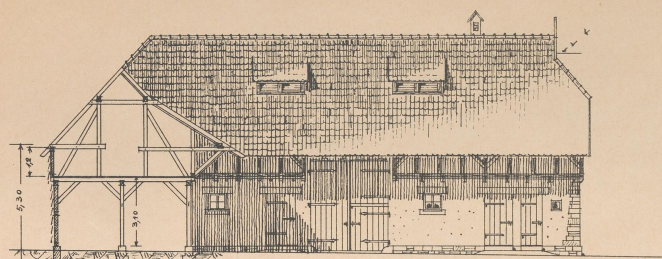


EK 787
KD/X
Hk 509/2

06
WuF
1334

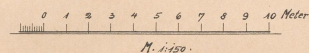
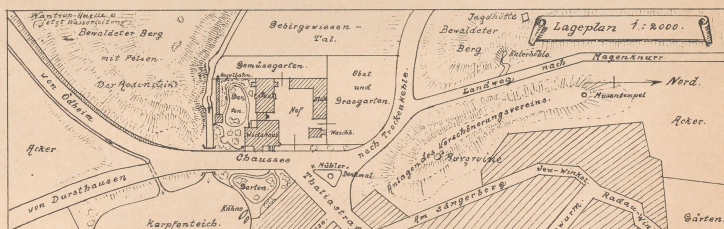
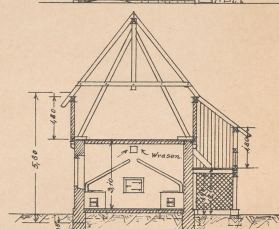
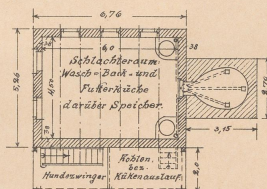
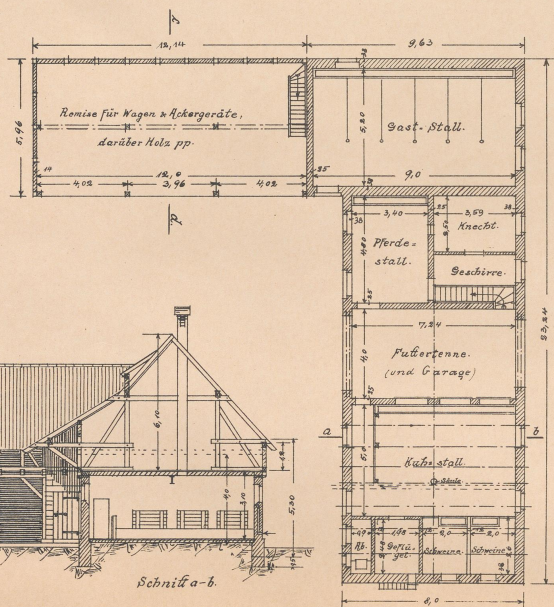
Stallgebäude.

Wasch- & Backhaus.



Schnitt c-d.

Hofansicht.



Einbeck, Nov. 1907
J. B. Baurat.

06
WuF
A334



EK 787
KD/X