



UNIVERSITÄTS-
BIBLIOTHEK
PADERBORN

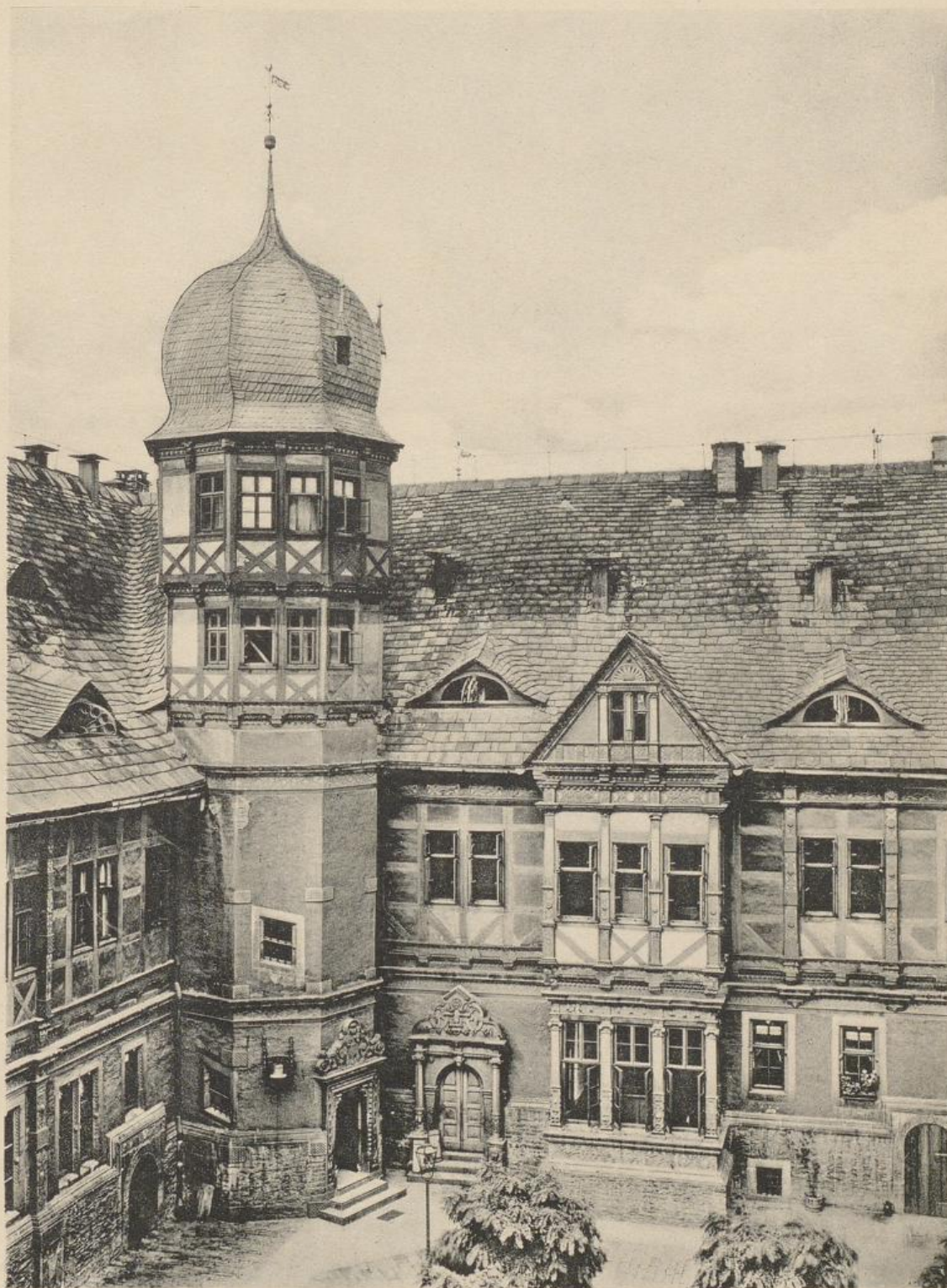
Die Bau- und Kunstdenkmäler des Herzogtums Braunschweig

<<Die>> Bau- und Kunstdenkmäler des Kreises Holzminden / bearb. von
Karl Steinacker

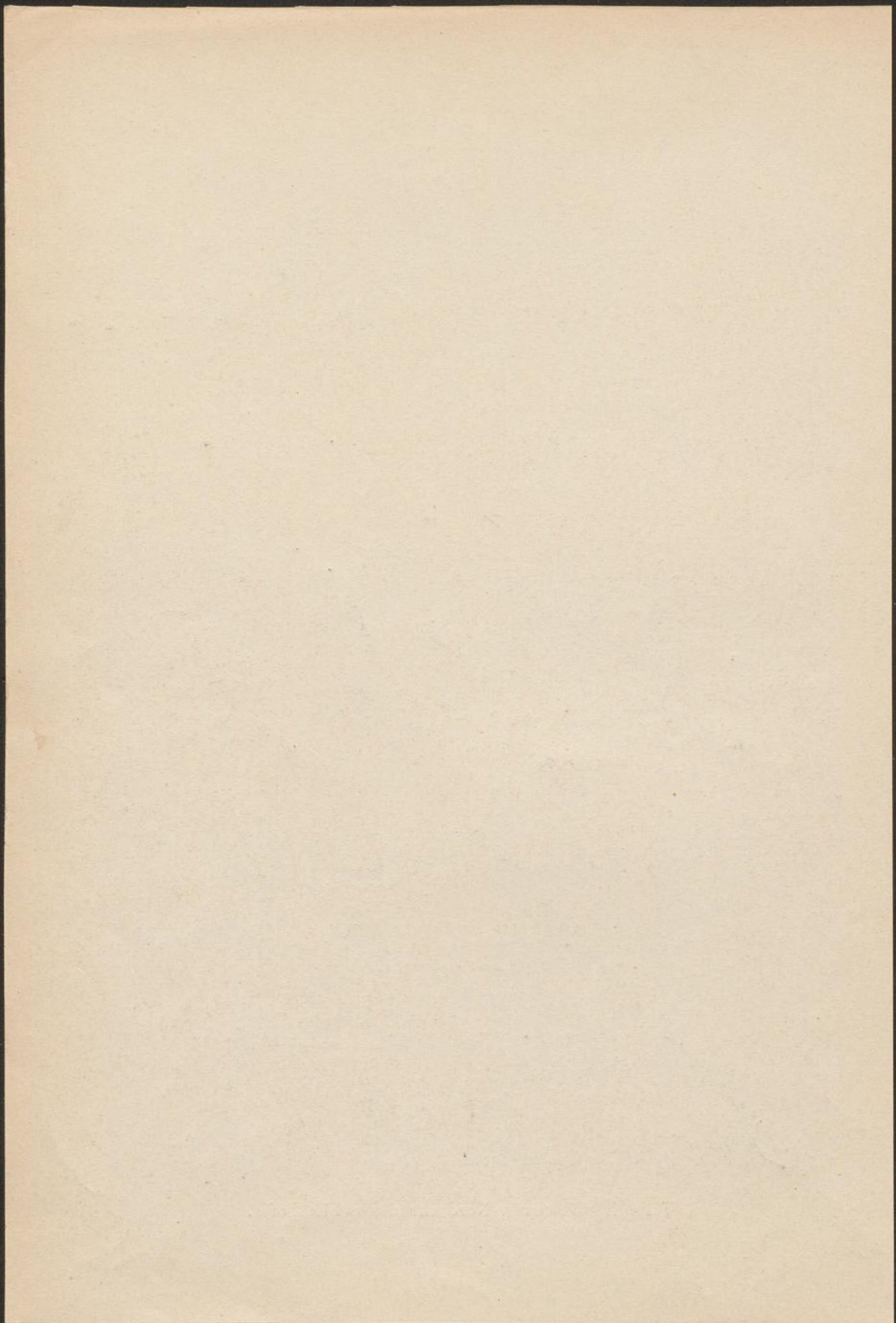
Meier, Paul J.
Wolfenbüttel, 1907

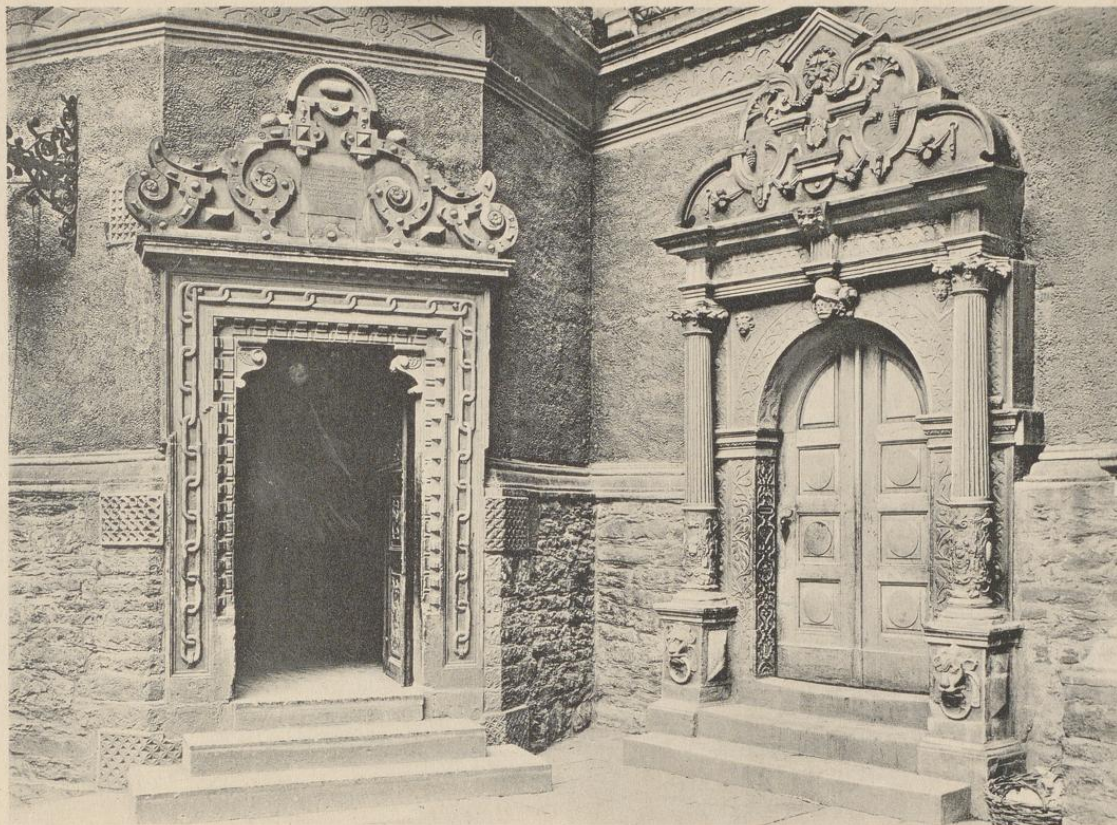
Tafeln

[urn:nbn:de:hbz:466:1-95452](https://nbn-resolving.org/urn:nbn:de:hbz:466:1-95452)



Tafel I. Bevern, Nordecke des Schlosshofes.





Tafel II. Bevern, nördliche Portale im Schlosshof.





Tafel III. Bevern, Däle des Hauses No. 2.

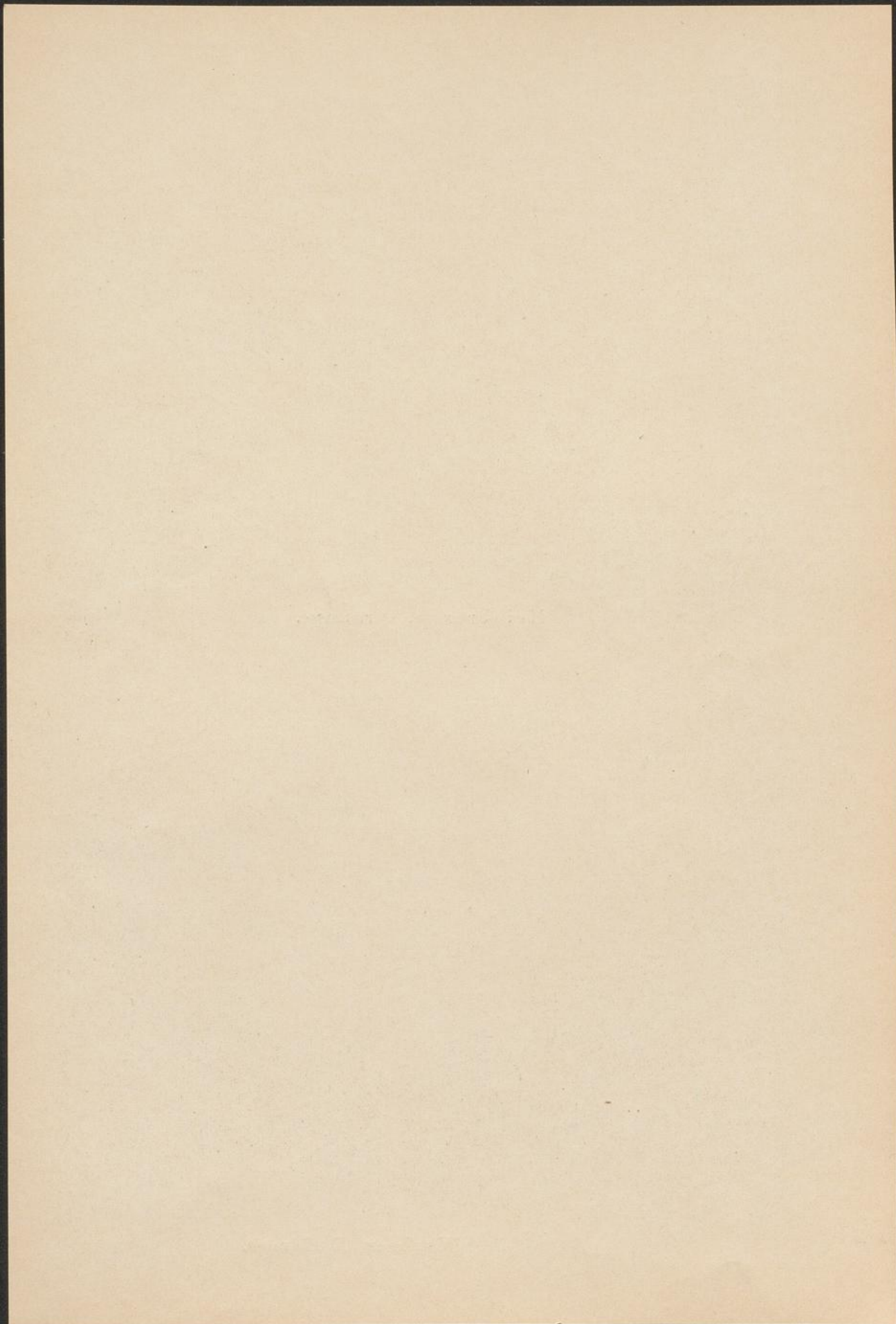




Meinbrexen, Dorfstrasse.



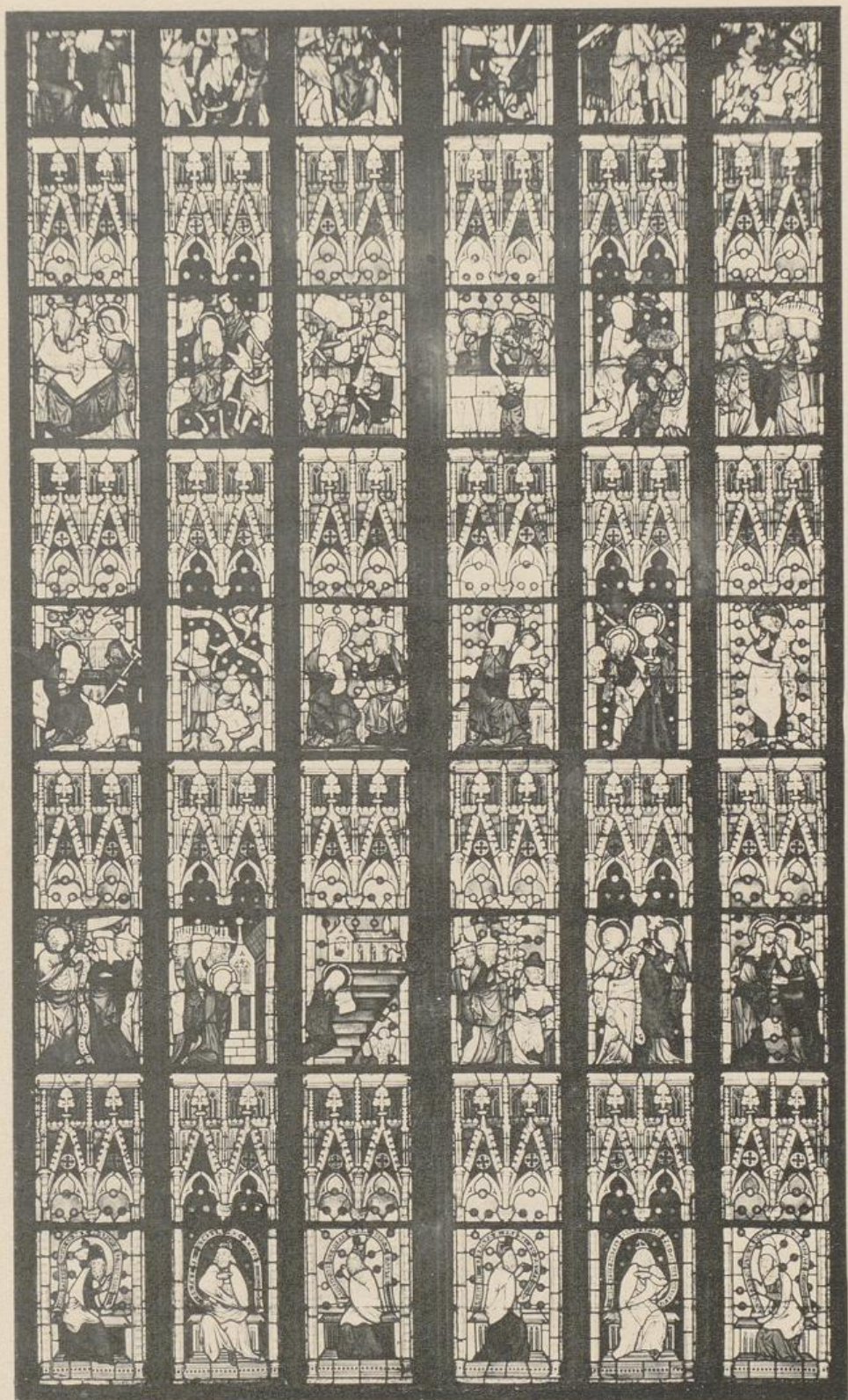
Tafel IV. Warbsen, Dorfstrasse.





Tafel V. Amelungsborn, Inneres der Kirche.





Tafel VI. Amelungsborn, Ostfenster.

Handwritten text, likely a title or page number, is visible at the bottom of the page.



5

3

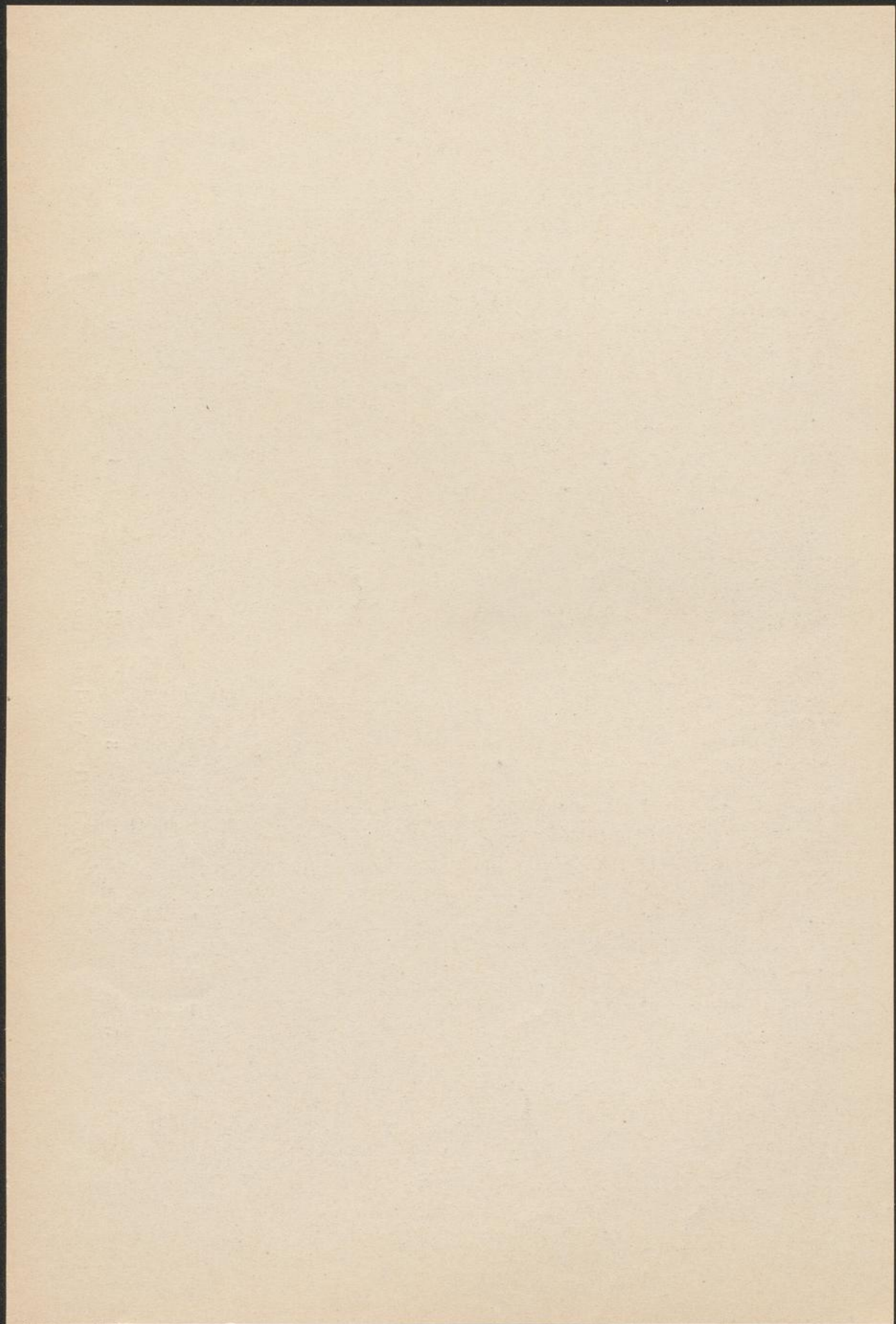
4

1

6

2

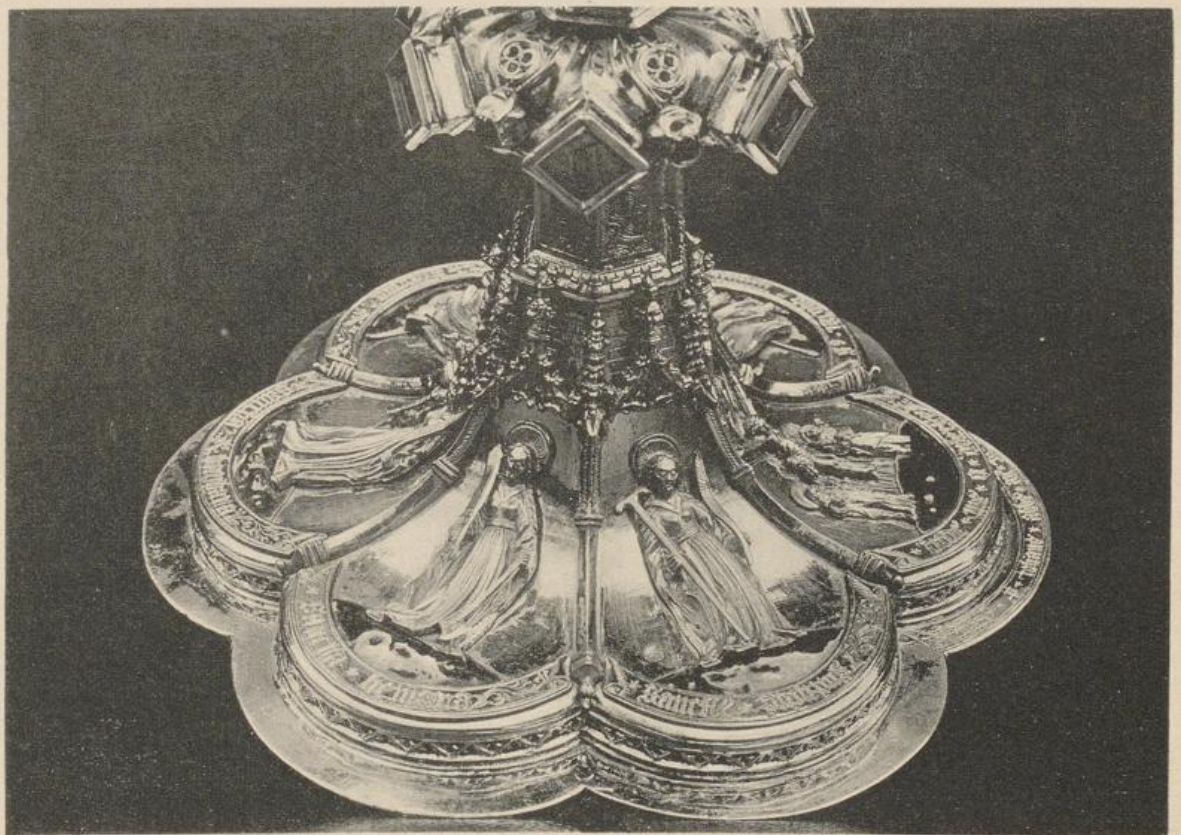
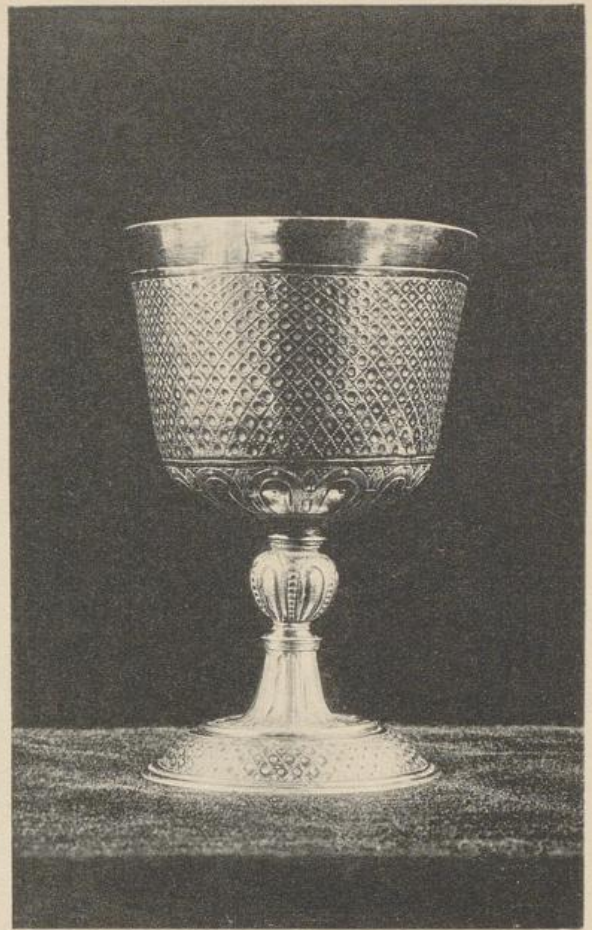
Tafel VII. Amelungsborn, Ziersteine.



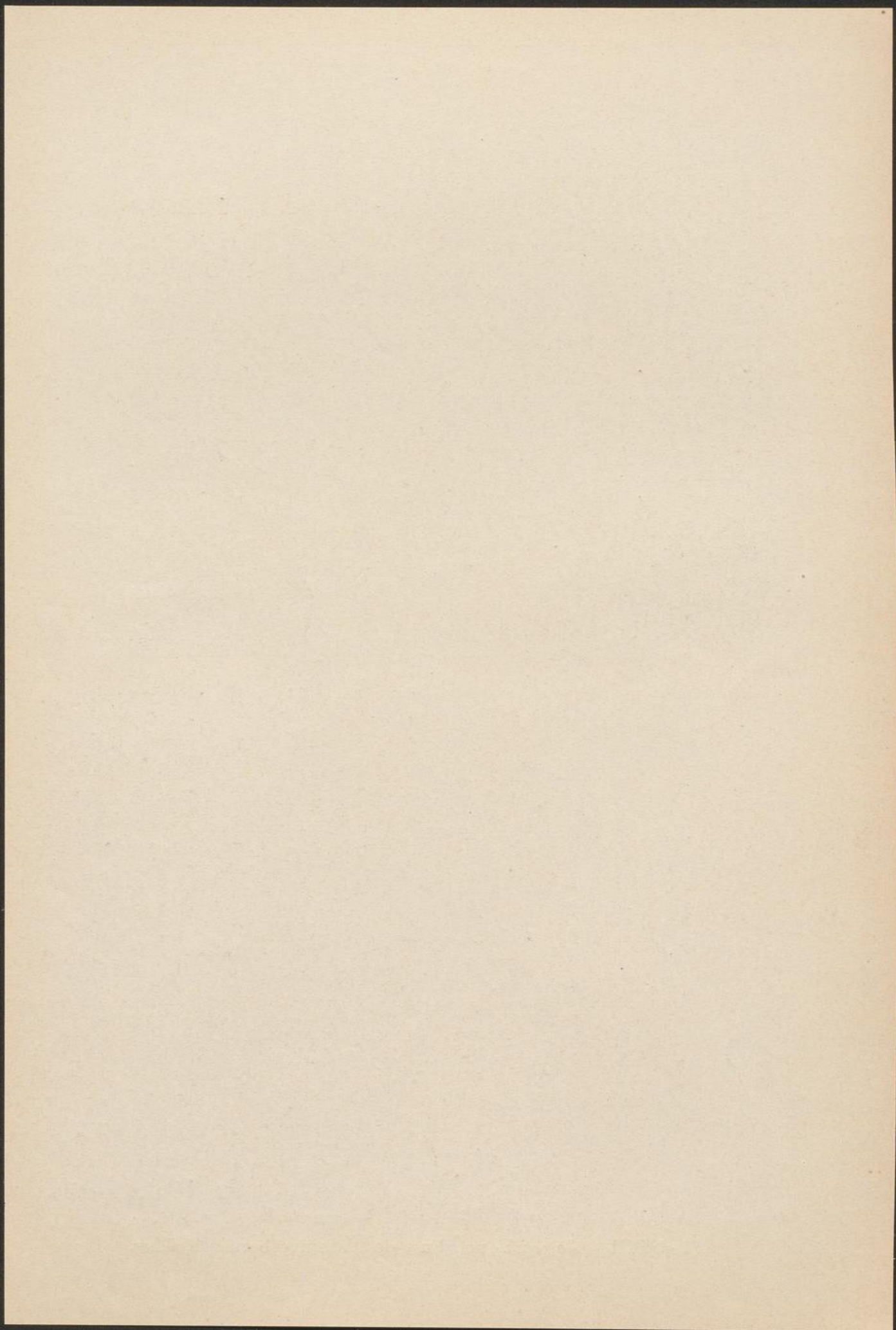
Negenborn, Amelungsborner Kelch.

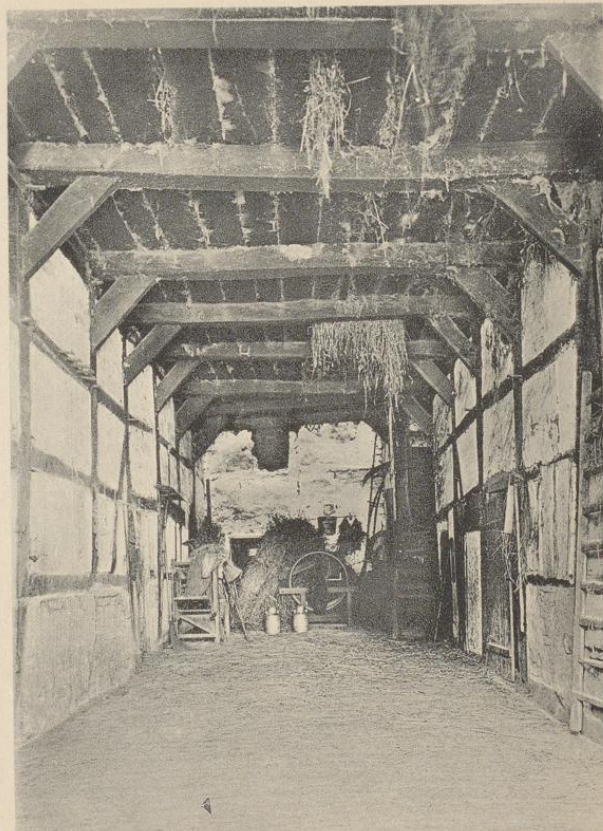


Vorwohle, Kelch.



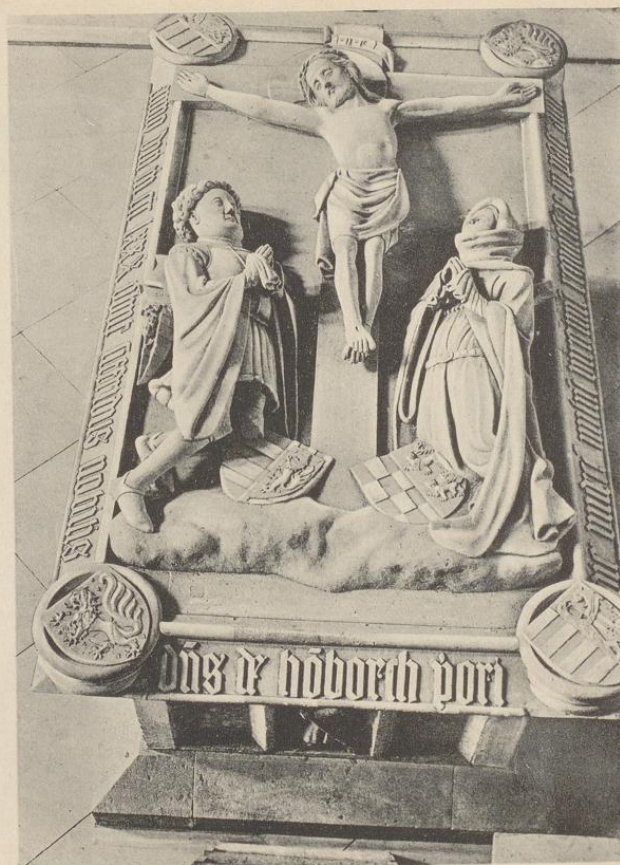
Tafel VIII. Negenborn, Fuss des Amelungsborner Kelches.





Tafel IX. Wangelnstedt, Hof Nr. 5. Aussenansicht und Däle.





Tafel X. Dielmissen, Kreuzigungsgruppe; Kennade, Grabmal Siegfrieds v. Homburg.





Adam Offinger: Margarethe v. Veltheim.



Bernhard Franken: Friedrich Wilhelm v. d. Schulenburg.

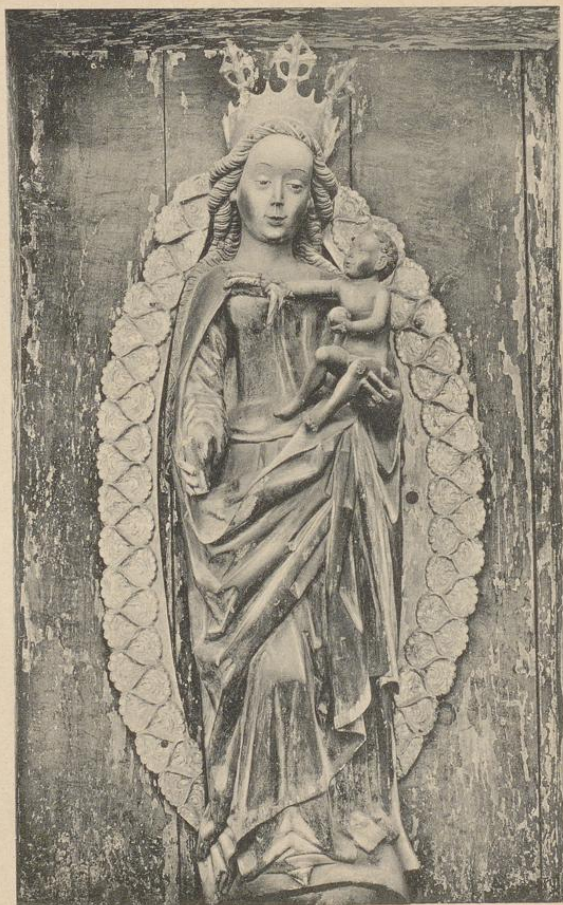
Tafel XI. Hehlen, Oelbilder.





Tafel XII. Hehlen, Torhaus.





Tafel XIII. Kemnade, Marienfiguren aus Stein und Holz.



UNIVERSITÄTS-
BIBLIOTHEK
PADERBORN