



UNIVERSITÄTS-
BIBLIOTHEK
PADERBORN

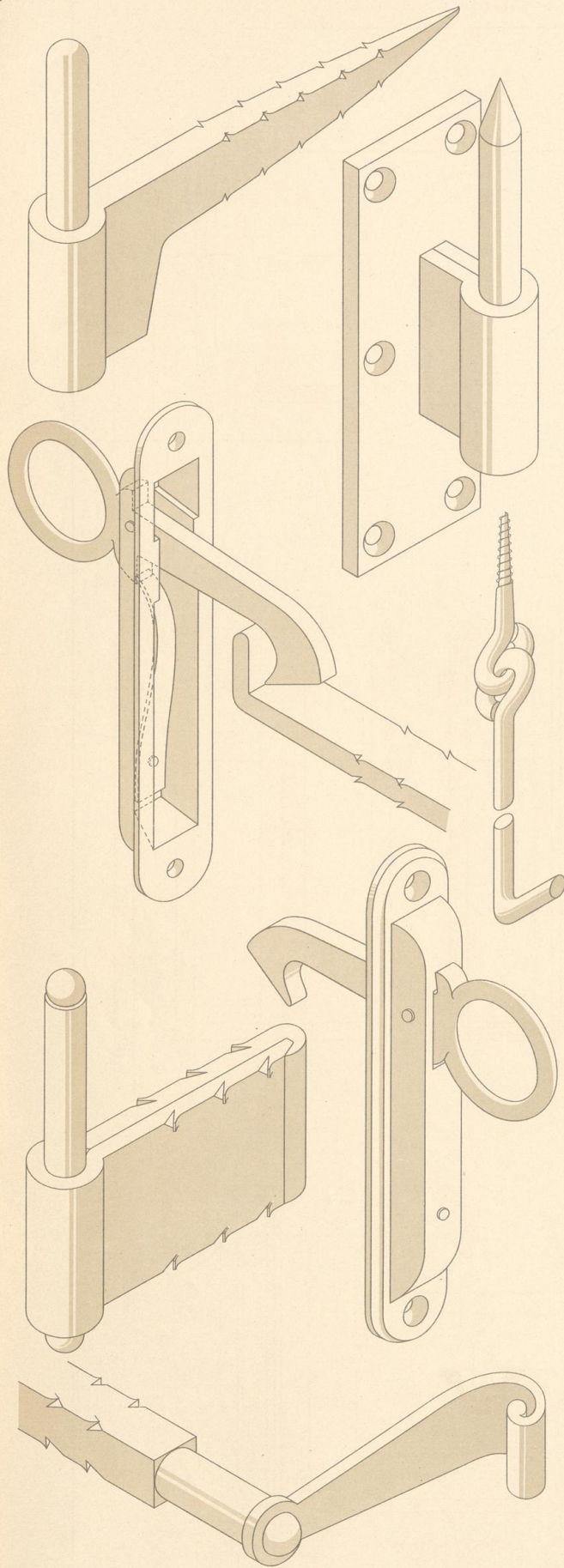
**Vorlagen für den gewerblichen Fachunterricht an
technischen Lehranstalten insbesondere an
Gewerbeschulen**

Kircher, Philipp

Karlsruhe, [1886 - 1889]

IX. Schlosserarbeiten.

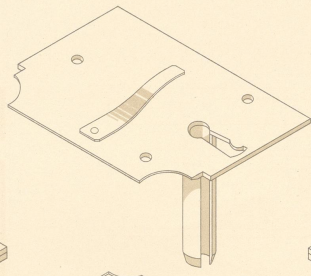
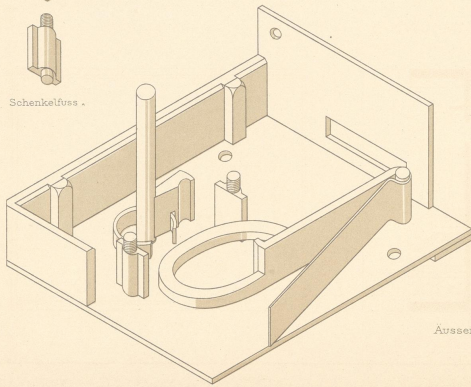
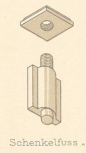
[urn:nbn:de:hbz:466:1-97992](https://nbn-resolving.org/urn:nbn:de:hbz:466:1-97992)



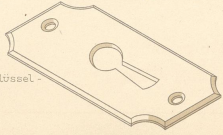


06
W16
1199

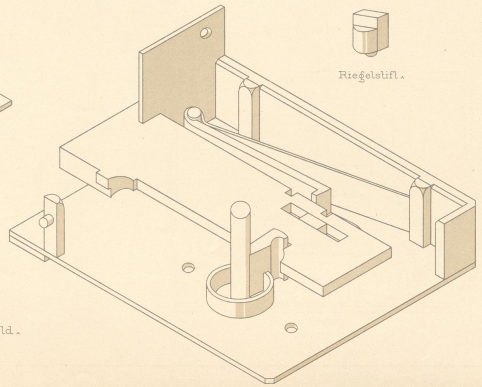
EK 938
K 0/XV



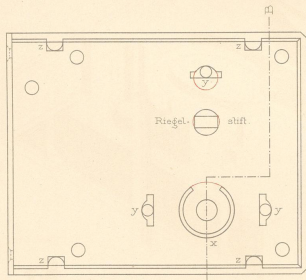
Ausserer Schlüssel.



Schild.

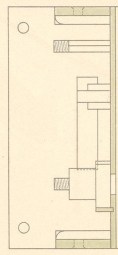


Riegelstift.



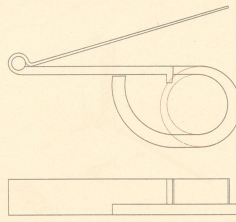
Schlosskasten.

yy - Schenkelfüsse, zz - Umschweifstiften.

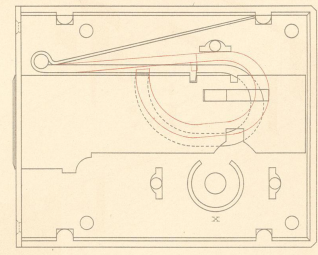


Schnitt A.B.

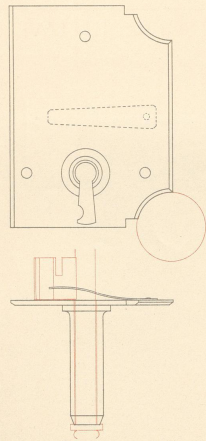
Riegel Schloss für Keller und Speicher.
(eintourig).



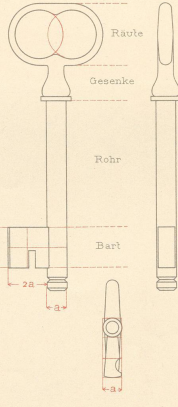
Zuhaltung.



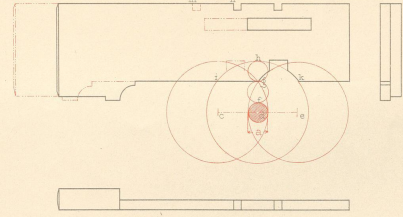
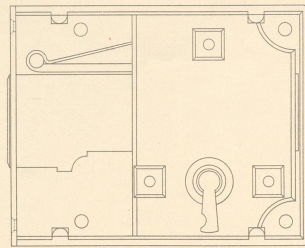
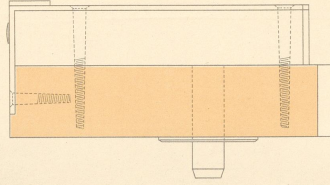
Schlosskasten mit Riegel und Zuhaltung.



Schlossdecke mit Schlüsselrohr und Schleppfeder.



Schlüssel.
(zum Reifchen x).



Schliessriegel.

fh - gi - de - mn - Schlüssellänge.
Schlüssellänge - Barthöhe.
Barthöhe - Bartbreite.
1/2 Bartbreite - 1/2 Barthöhe - Rohrdicke a.

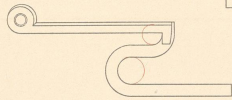
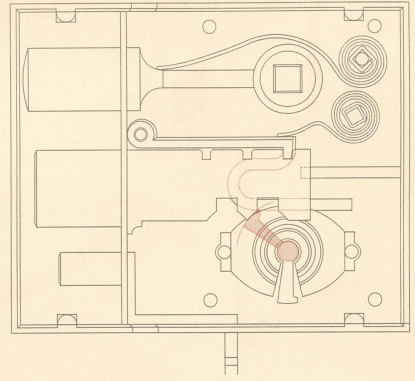
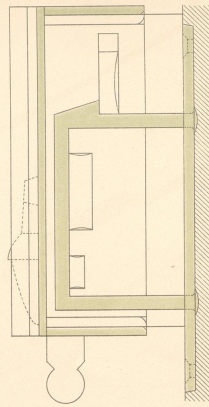
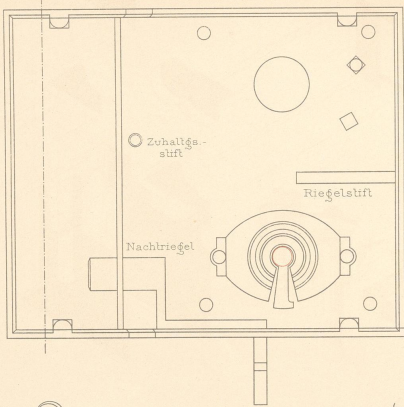
Wohnort und Datum.

Namen.

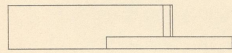
EK 938
K D / XI



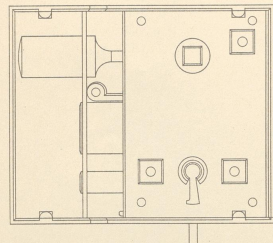
06
076
M199



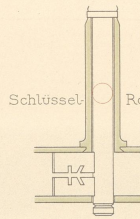
Zuhaltung.



2/3 nat. Gr.

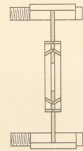


Wohnort und Datum.



Schlüssel.

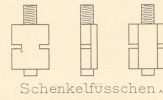
Rohr.



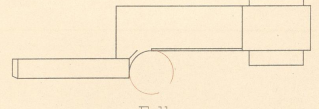
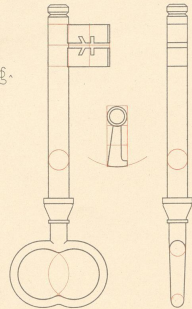
Mittelbruch mit Reifbesatzung.



Schliesskloben.



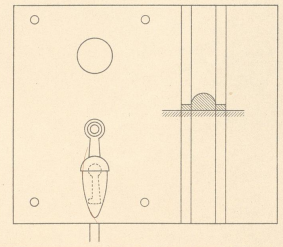
Schenkelfüsschen.



Falle.



2/3 nat. Gr.

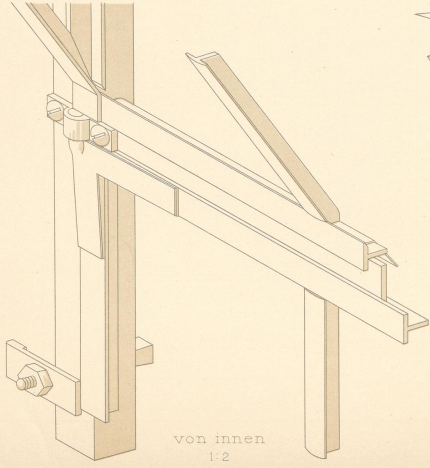


Namen.

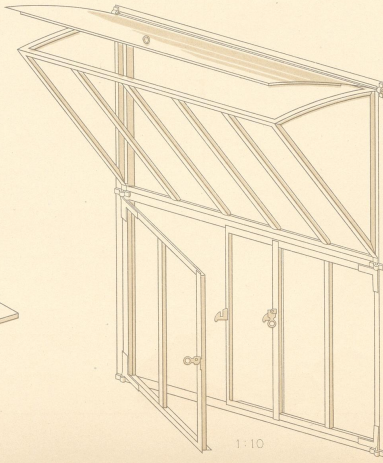
EK 938
K 0/1v



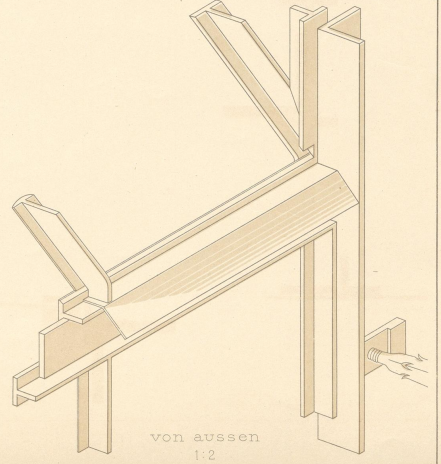
06
1576
1199



von innen
1:2



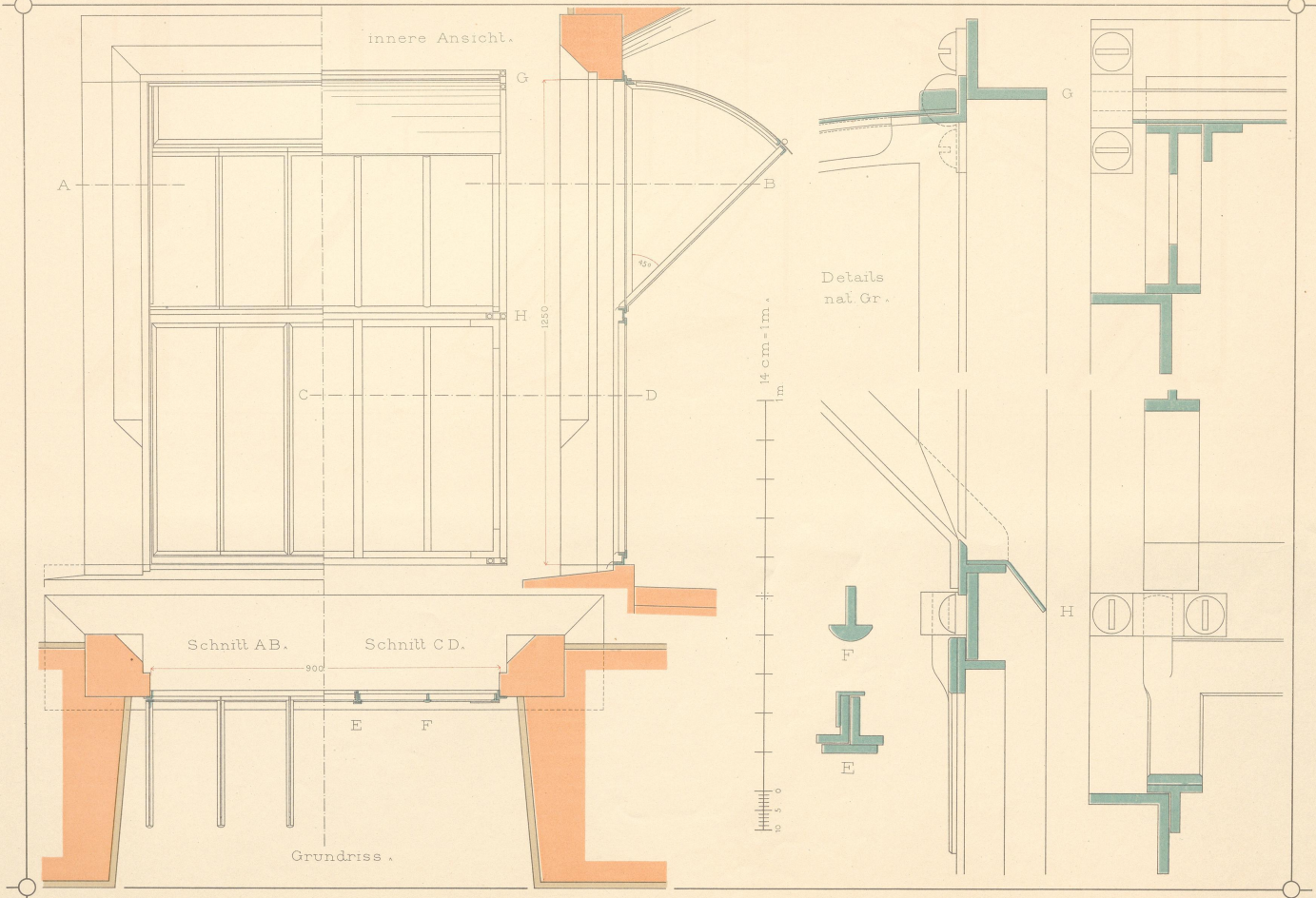
1:10



von aussen
1:2

Stallfenster.

Schlosserarbeiten.



Wohnort und Datum.

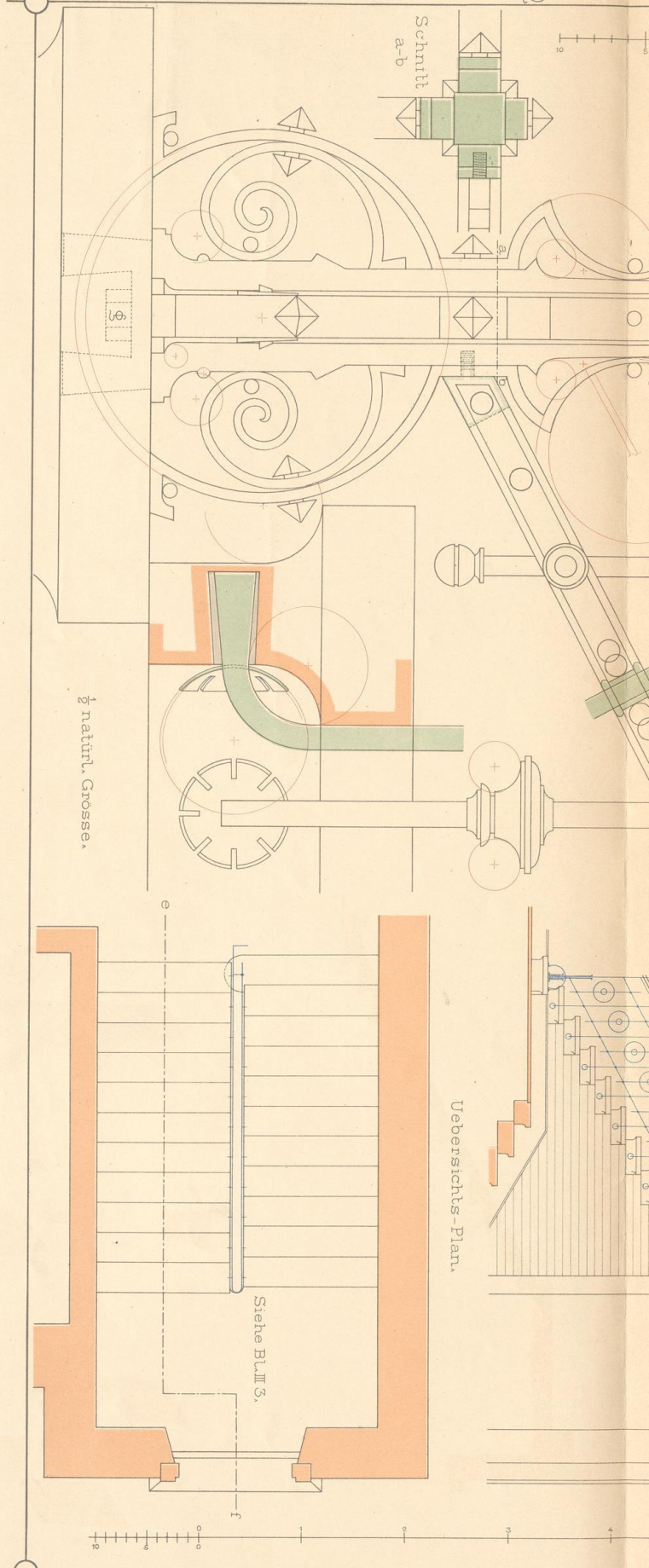
Namen.

EK 938
K D / X V



66/11
1076
90

Entwurf Gebäudeanlage.

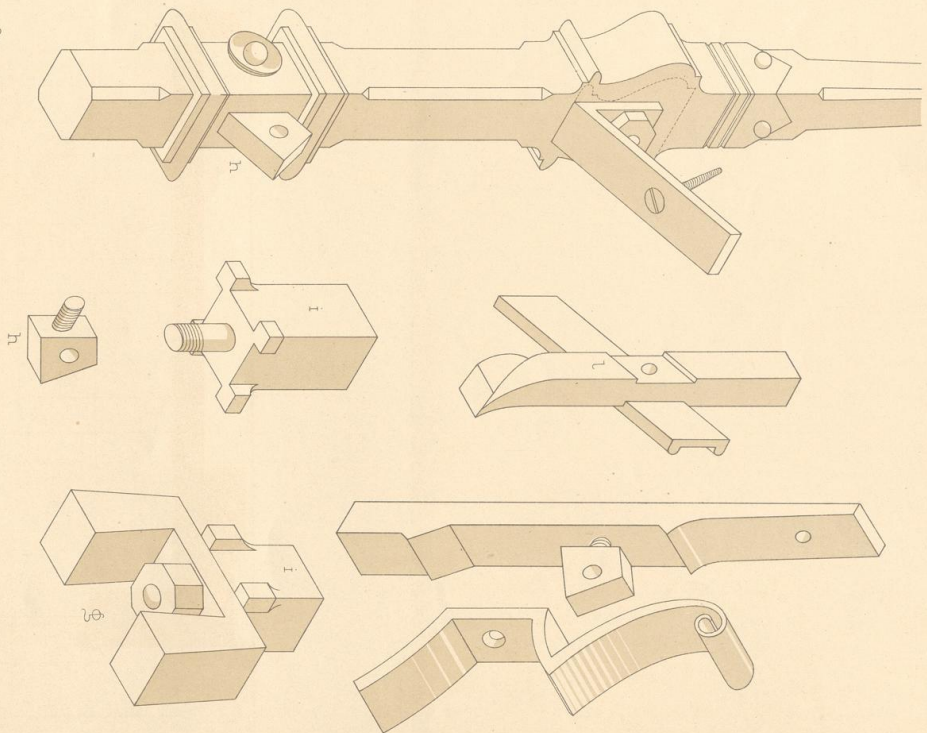
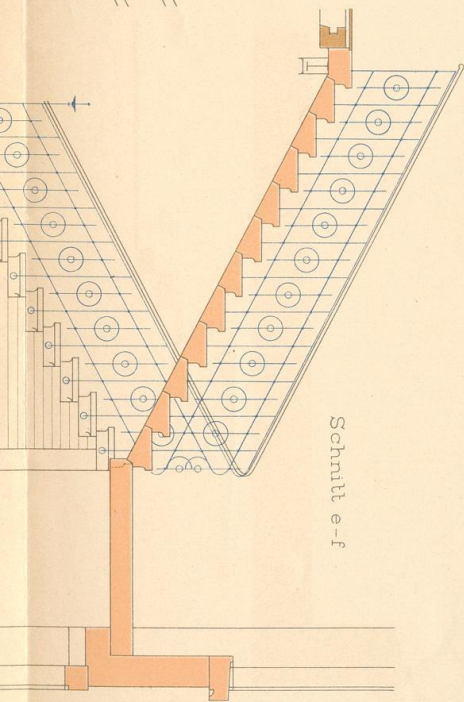
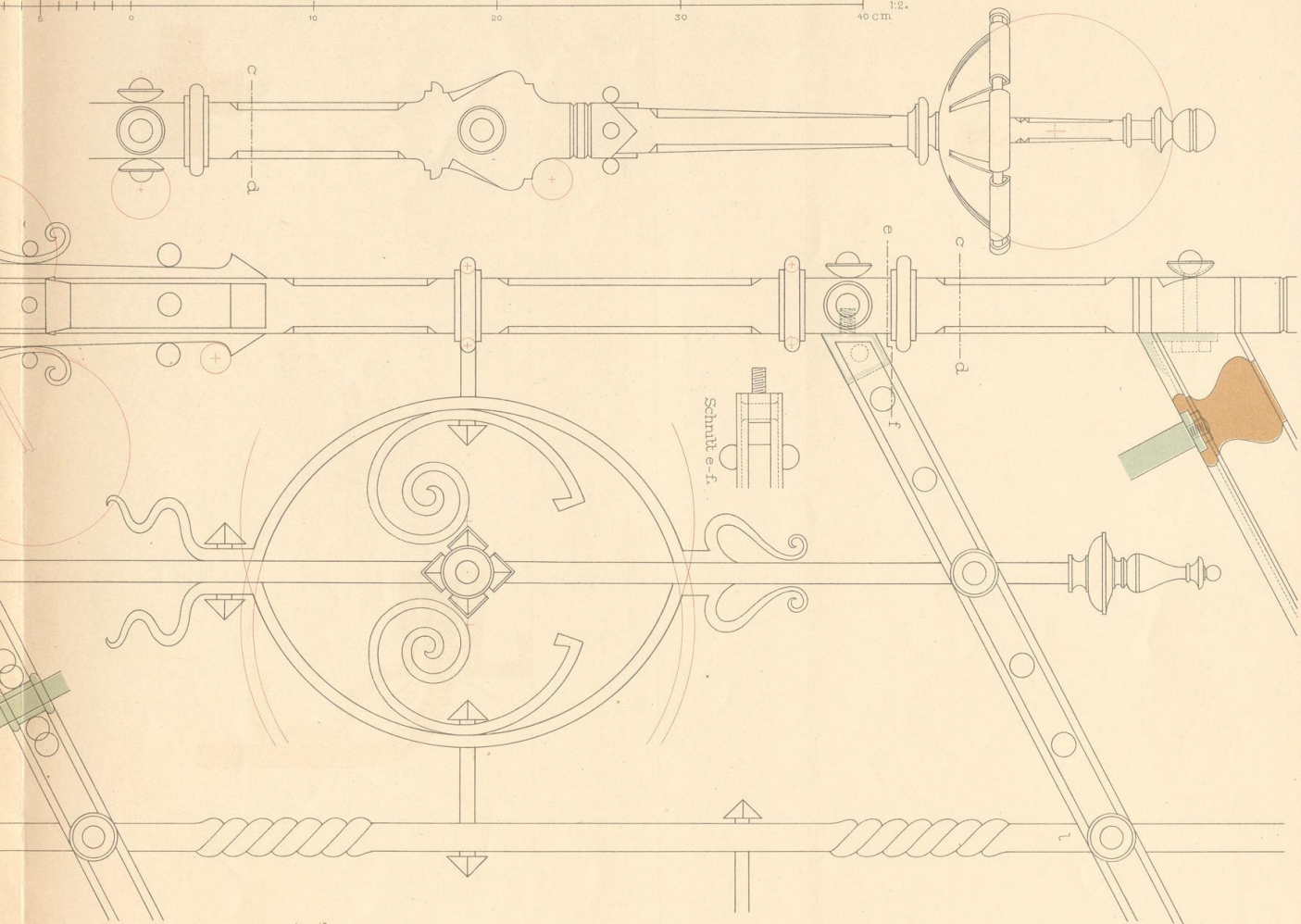
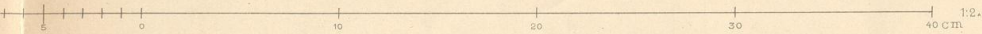


1/2 natürl. Grosse.

Siehe Bl. III 5.

Uebersichts-Plan.

Wohnort und Datum.

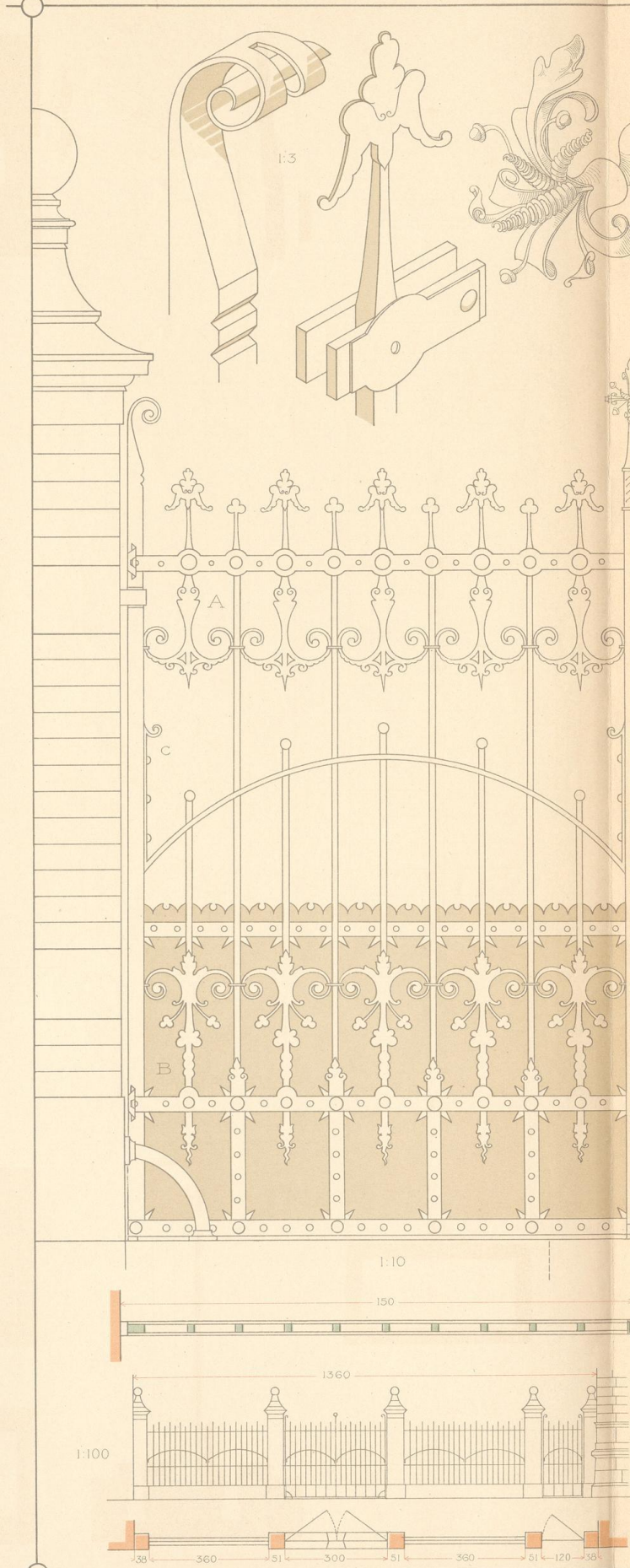




06
WTG
1199

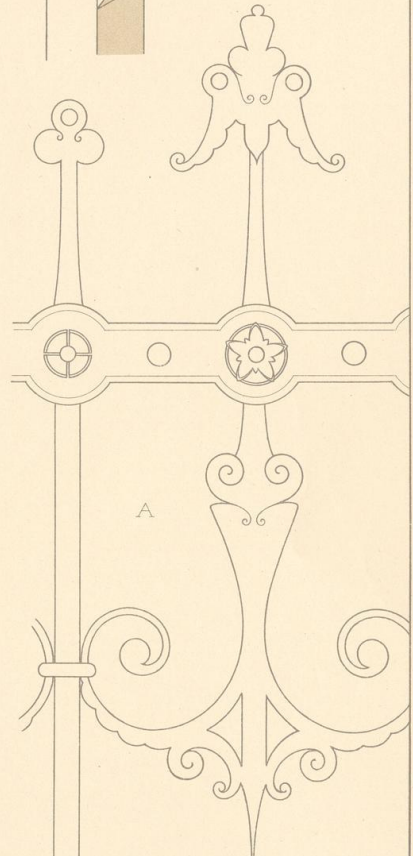
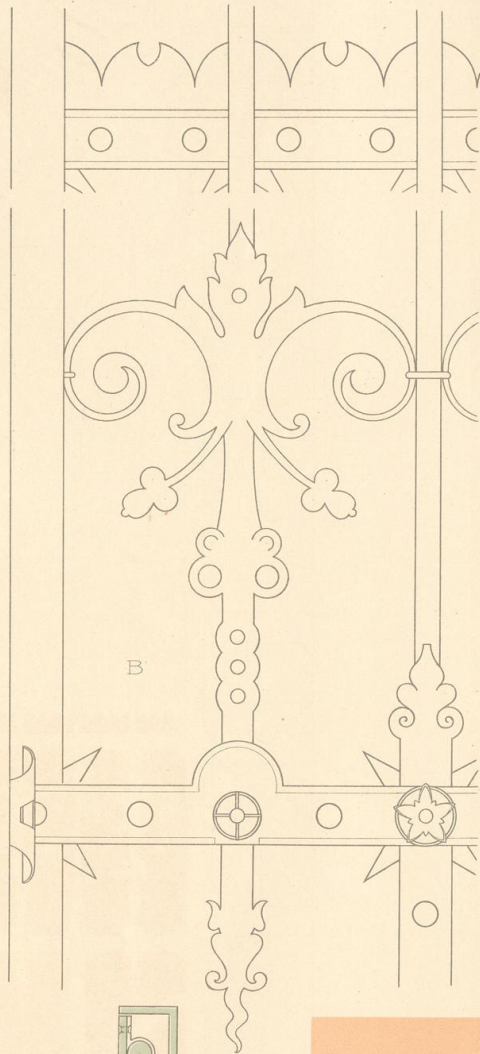
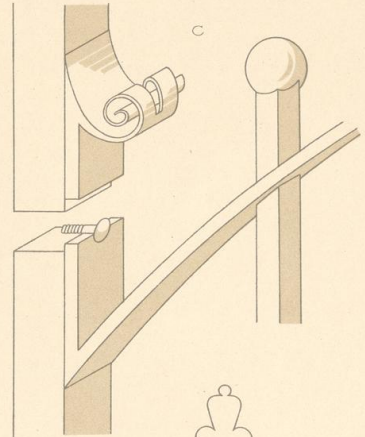
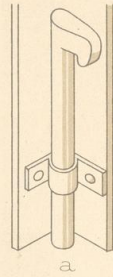
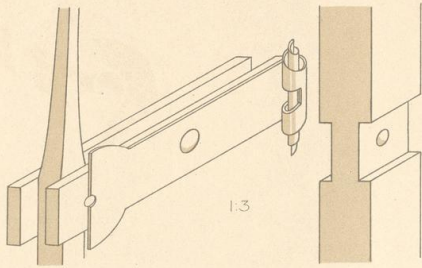
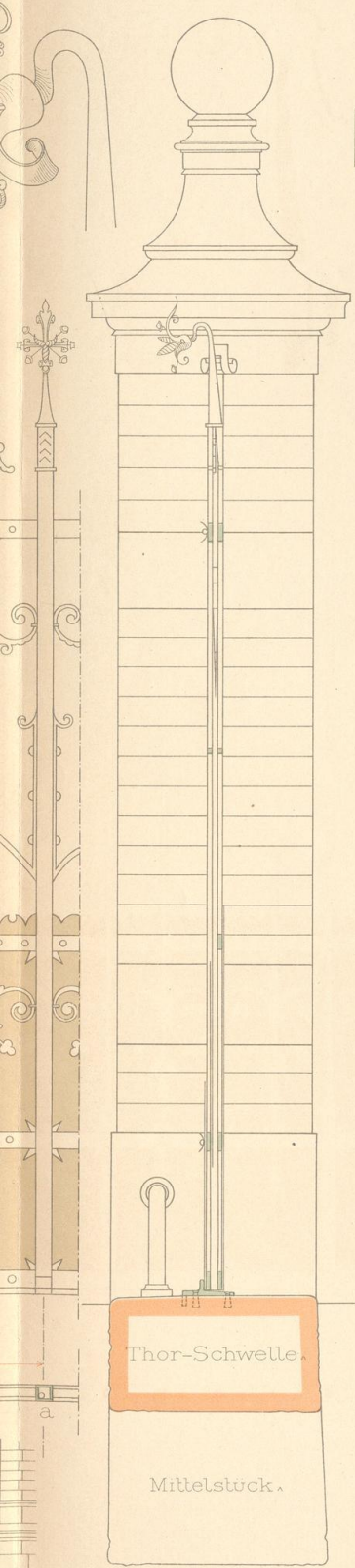
EK 938
K D / XV

Einfriedigung der Gebäudeanlage

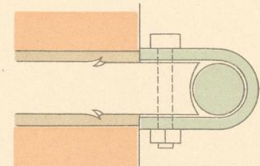
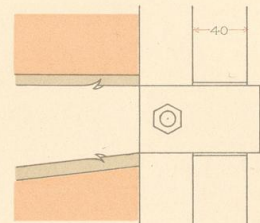
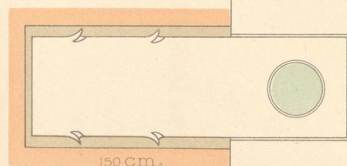
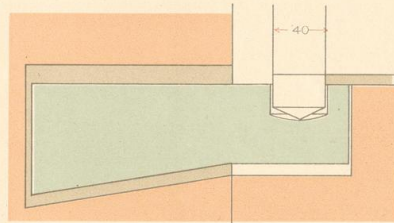
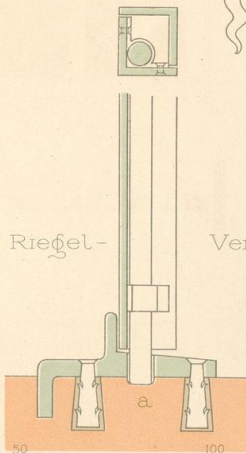


Wohnort und Datum.

J. Bielefeld's Verlag Karlsruhe.



Details $\frac{1}{3}$ nat. Grösse.



10 5 0

50 100

150 Cm. 1.10

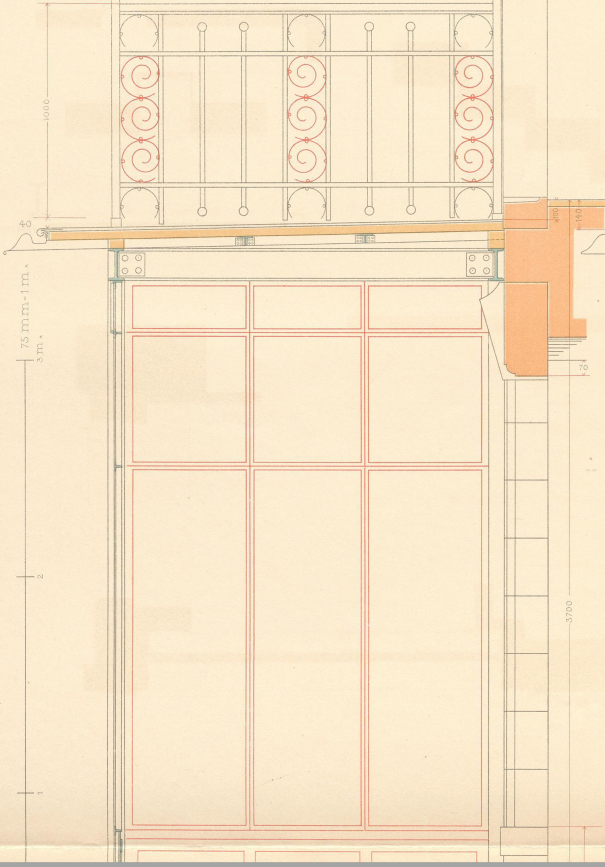


06
WTG
1199

EK 938
K D/XV

Eiserne Veranda.

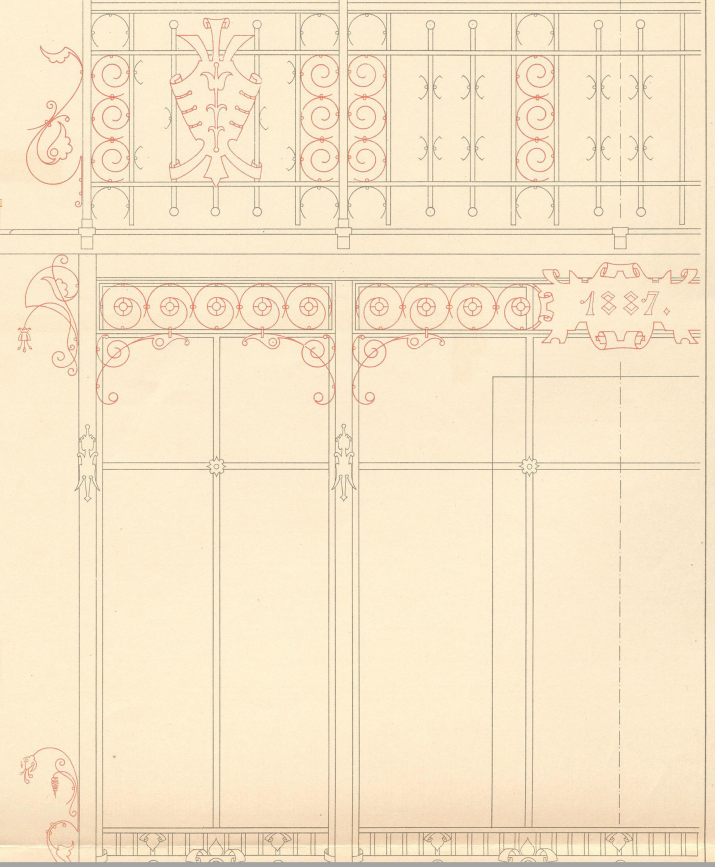
Schnitt A B.

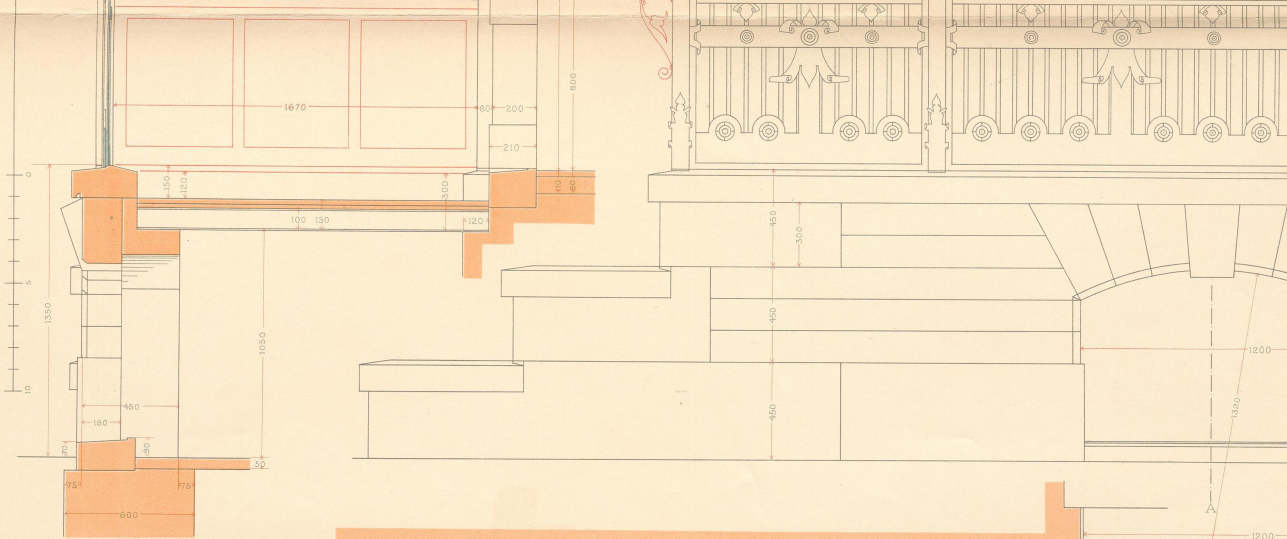


Schlosserarbeiten.

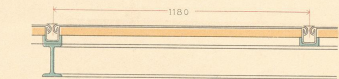
Ansicht.

H—Mitte

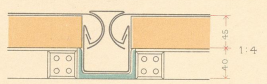




Längenschnitt des Balkonbodens.

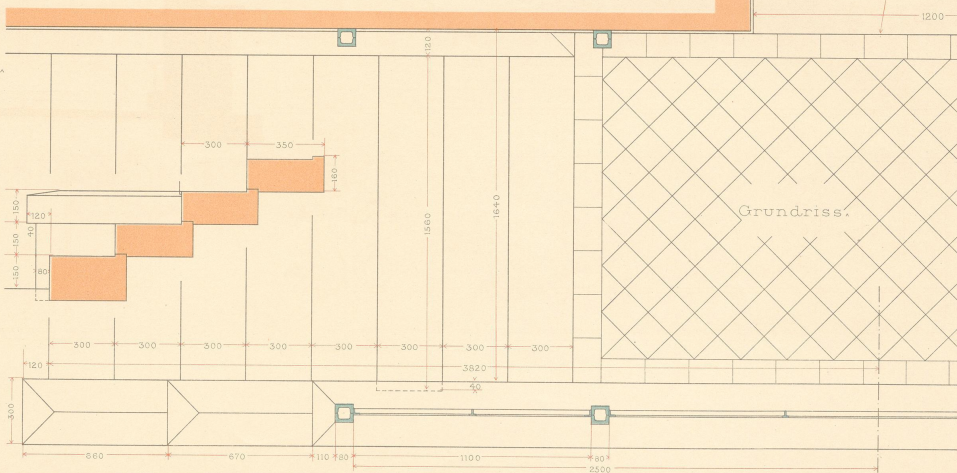


Detail



Variation bei Verglasung

1:100



Grundriss.

Wohnort und Datum.

Blatt IX 7 u 8.

Namen.

J. Bielefelds Verlag Karlsruhe.

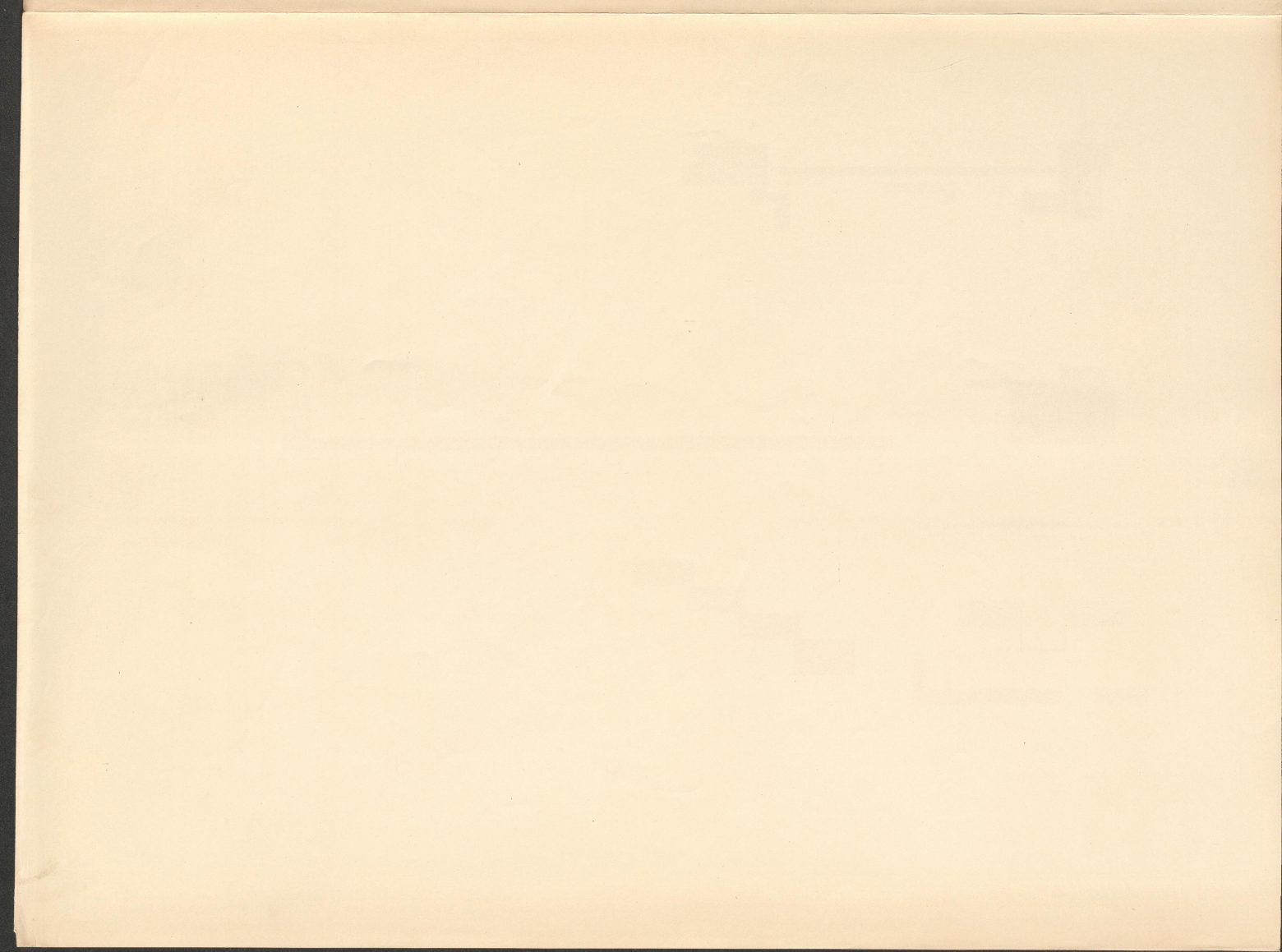
Kircher, Vorlagen f. d. gewerbl. Fachunterricht.

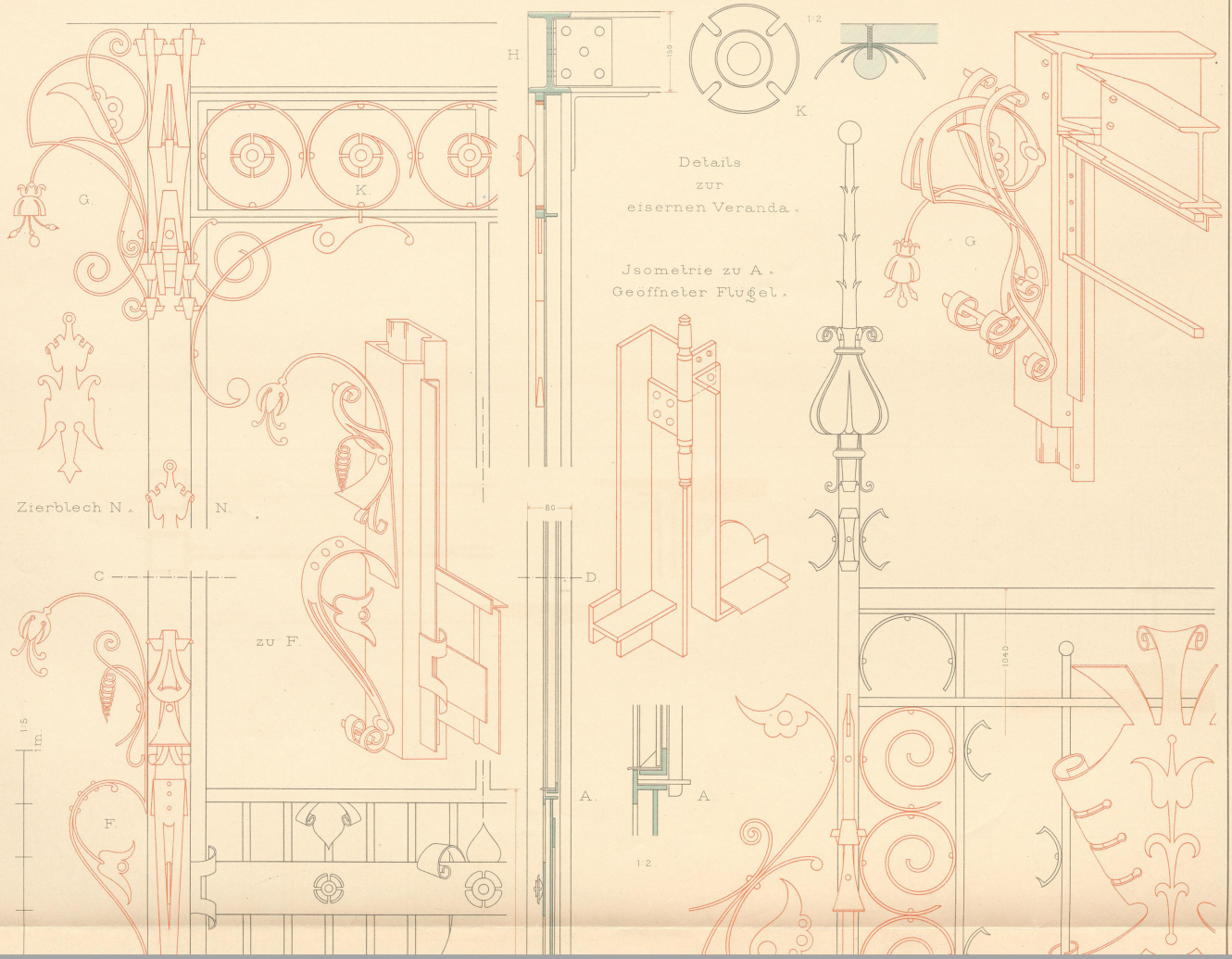
Lith. Anst. L. Geissendorfer.

K 3/XV
EK 938



20
212
1999





Details zur eisernen Veranda.

Isometrie zu A. Geöffneter Flügel.

Zierblech N.

zu F.

1.5 m.

H

1:2

K

G

G

K

N

N

F

A

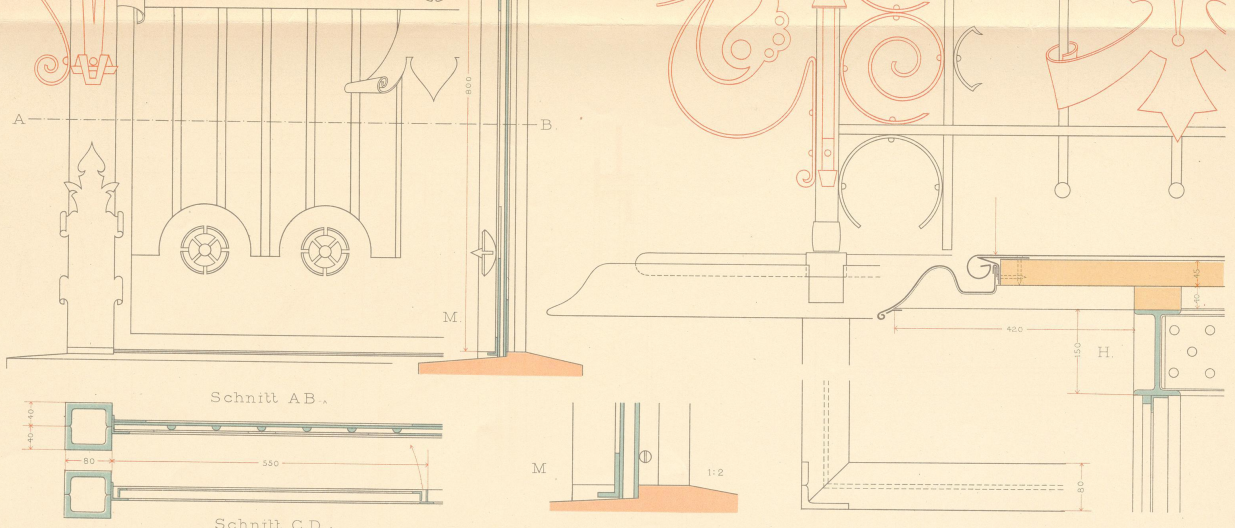
1:2

A

D

80

1540



Wohnort und Datum.

Blatt IX 9.

Namen.

J. Bielefeld's Verlag Karlsruhe.

Kircher. Vorlagen f. d. gewerbl. Fachunterricht.

Lith. Anst. L. Geissendörfer.

06
2176
1199



EK 938
K 0 / XV

