



UNIVERSITÄTS-
BIBLIOTHEK
PADERBORN

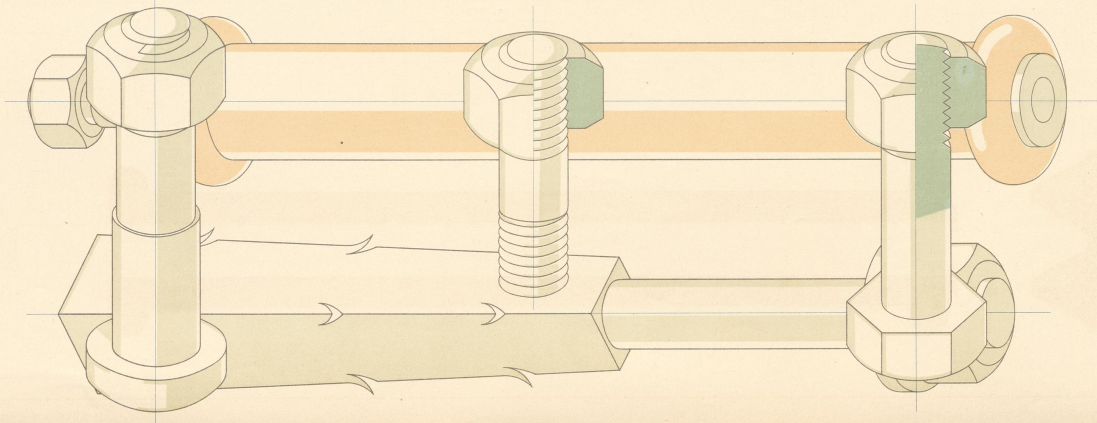
**Vorlagen für den gewerblichen Fachunterricht an
technischen Lehranstalten insbesondere an
Gewerbeschulen**

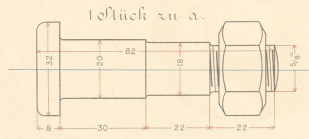
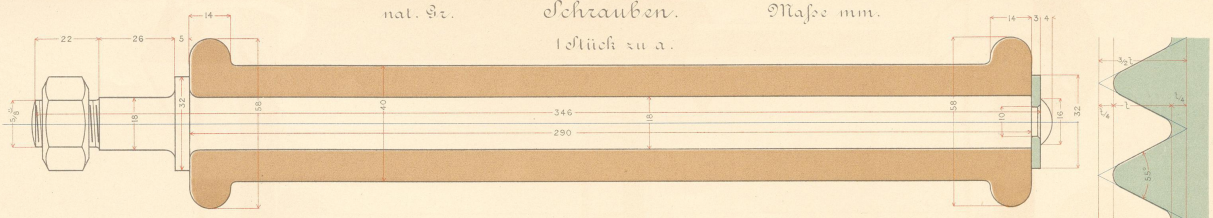
Kircher, Philipp

Karlsruhe, [1886 - 1889]

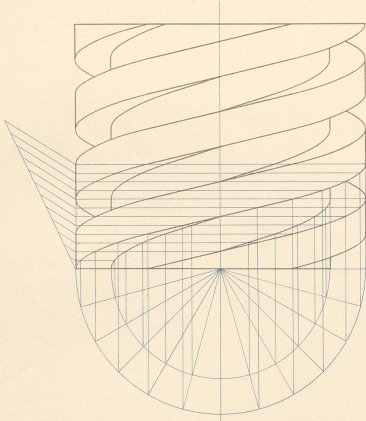
XII. Maschinenbau-Objekte.

[urn:nbn:de:hbz:466:1-97992](https://nbn-resolving.org/urn:nbn:de:hbz:466:1-97992)



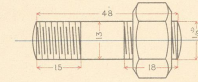
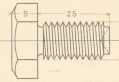
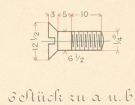


3-gängige Schraube mit flachem Gewinde.



a Brunnen mit Schwingrad.

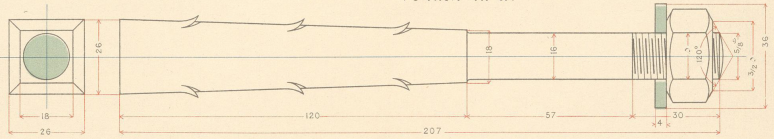
Durchmesser des Kopfes mm.	Gewinde- Durchmesser in den Spitzen mm.	Kern- Durchmesser mm.	Zahl der Gänge auf 1 Zoll engl.	Höhe des Kopfes mm.	Höhe des Mutter- kopfes mm.	eckiges Gewinde des Kopfes mm.	eckiges Gewinde des Mutter- kopfes mm.
10	3/8	9.5	7.5	16	7	10	17
13	1/2	12.7	10	12	9	13	22
16	5/8	15.9	12.9	11	12	16	28
20	3/4	19.1	15.8	10	14	20	33
23	7/8	22.2	18.6	9	16	23	39
26	1	25.4	21.3	8	18	26	44
30	1 1/8	28.6	23.9	7	20	30	50
33	1 1/4	31.8	27.1	7	22	33	55
36	1 3/8	34.9	29.5	6	24	36	61
40	1 1/2	38.1	32.7	6	26	40	66
43	1 5/8	41.3	34.8	5	29	43	72
46	1 3/4	44.5	37.9	5	31	46	77
50	1 7/8	47.6	40.4	4 1/2	34	50	83



20 Stück zu a u. b.

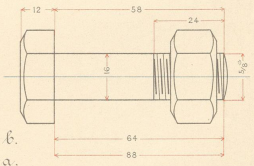
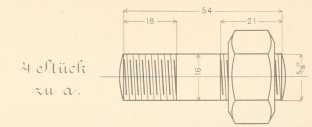
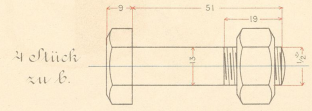
4 Stück zu b.
4 Stück zu a.

5 Stück zu a u. b.



b Brunnen mit Hebel.

Whitworth-Gewinde.



Wohnort und Datum.

Namen.

K 01/11
EK 938

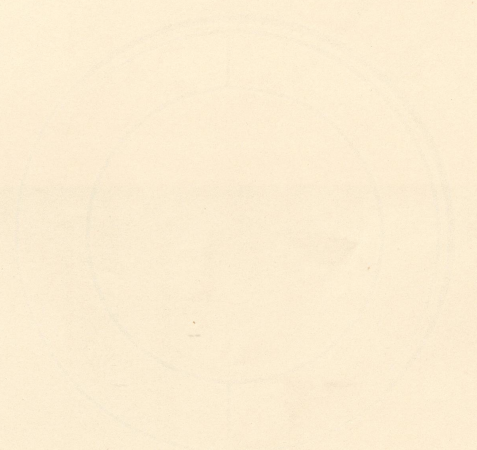


OC
WTC
1199

EK 438
K D/XV



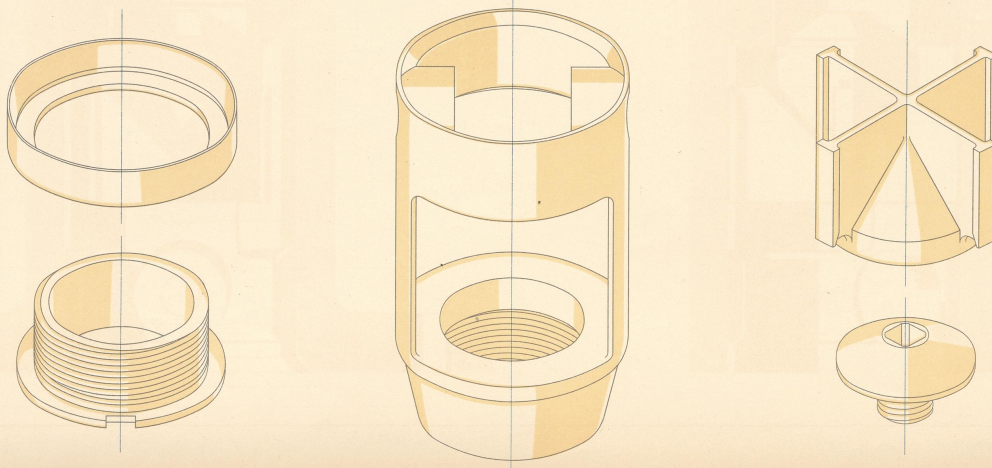
DC
WTC
/1999



EK 938
K D/V



06
MTG
11/98



EK 938
K D/XV

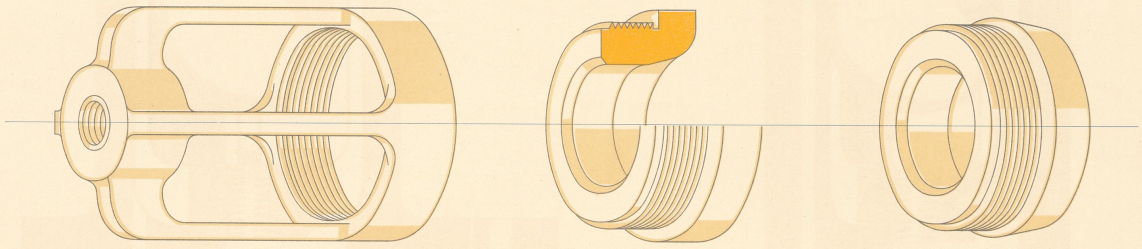


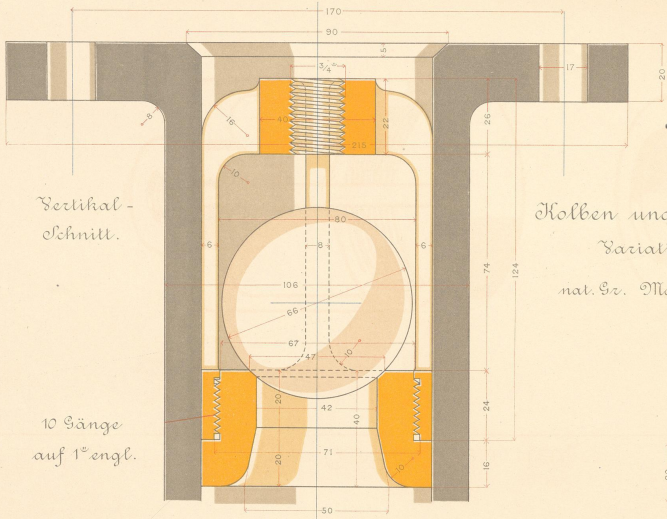
№ 1076
1199

EK 938
K 0/14



06
1576
1/199

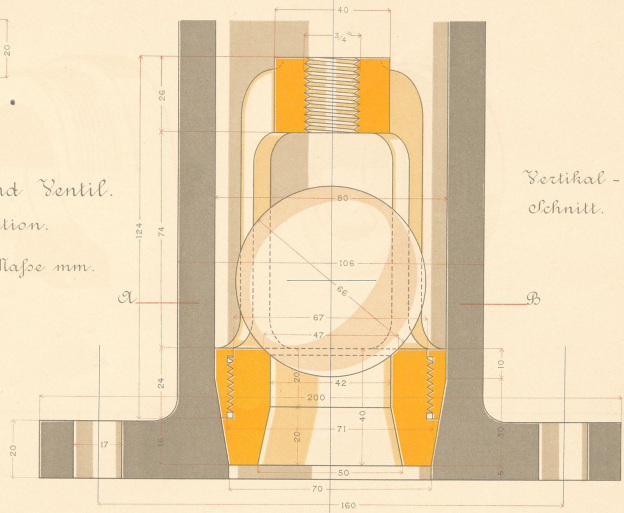




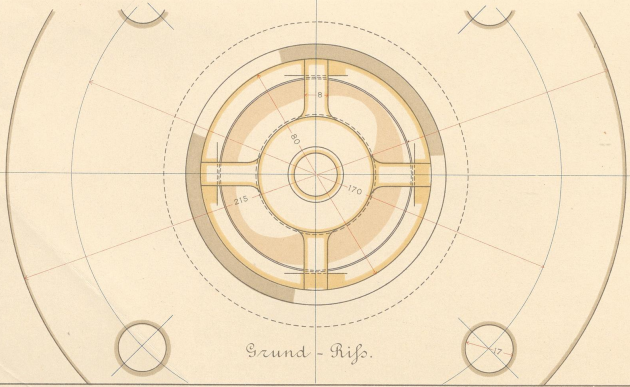
Vertikal-Schnitt.

10 Gänge auf 1° engl.

Kolben und Ventil.
Variation.
nat. Gr. Maße mm.

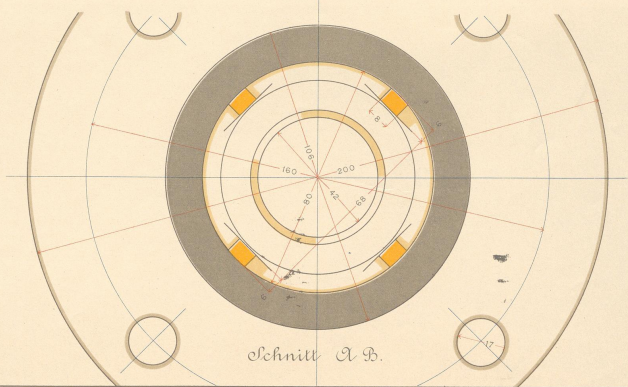


Vertikal-Schnitt.



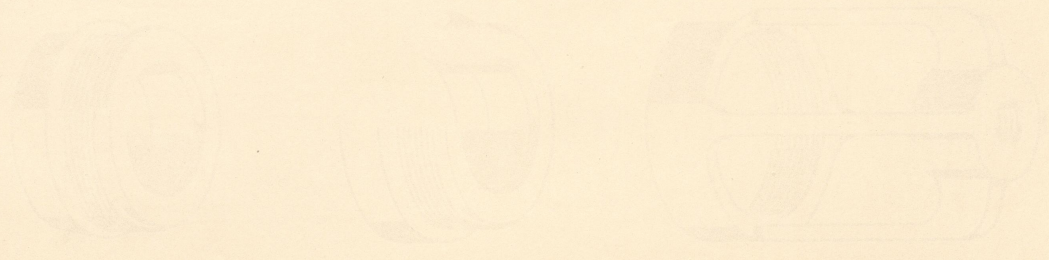
Grund-Riss.

Wohnort und Datum.



Schnitt A B.

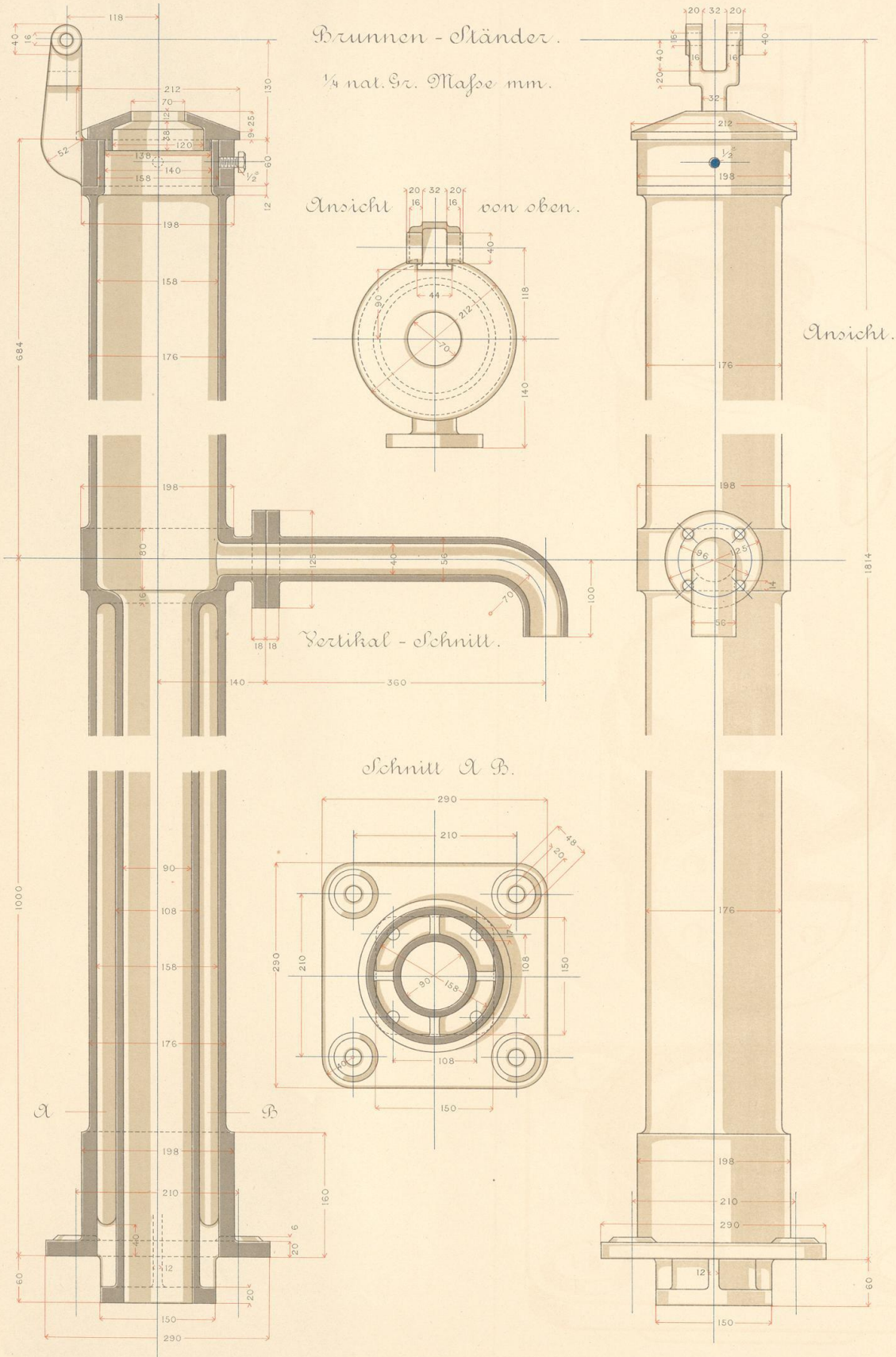
Namen.



5K438
K D/AV



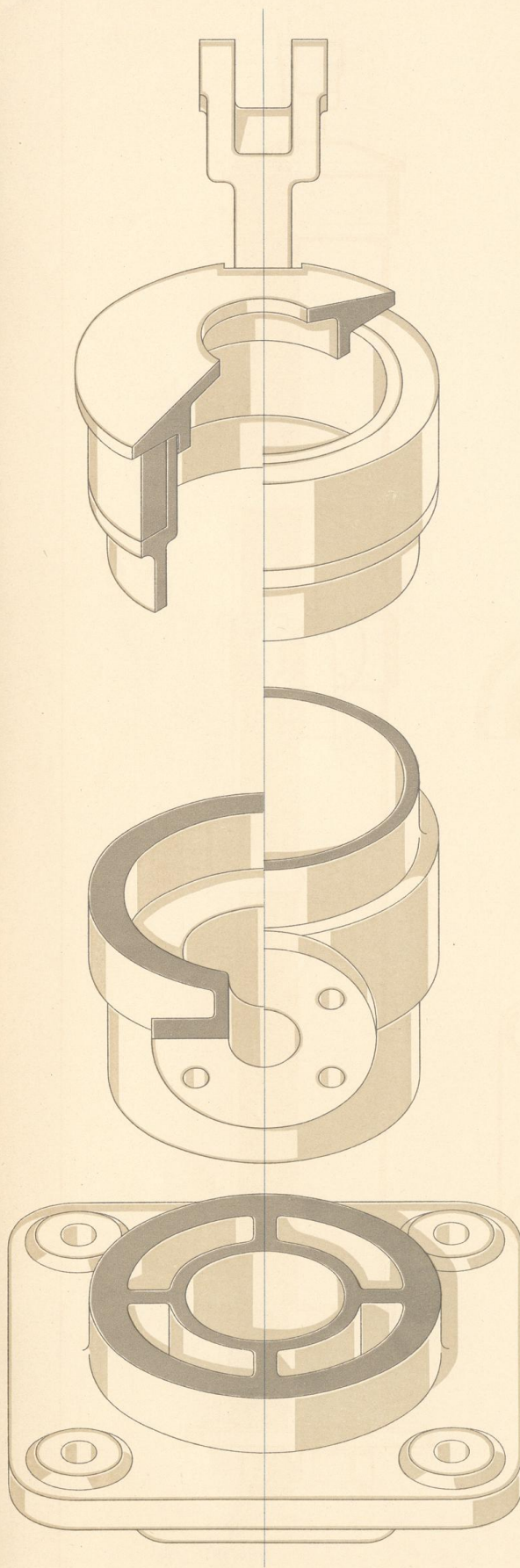
06
1576
1149



Wohnort und Datum.

Namen.

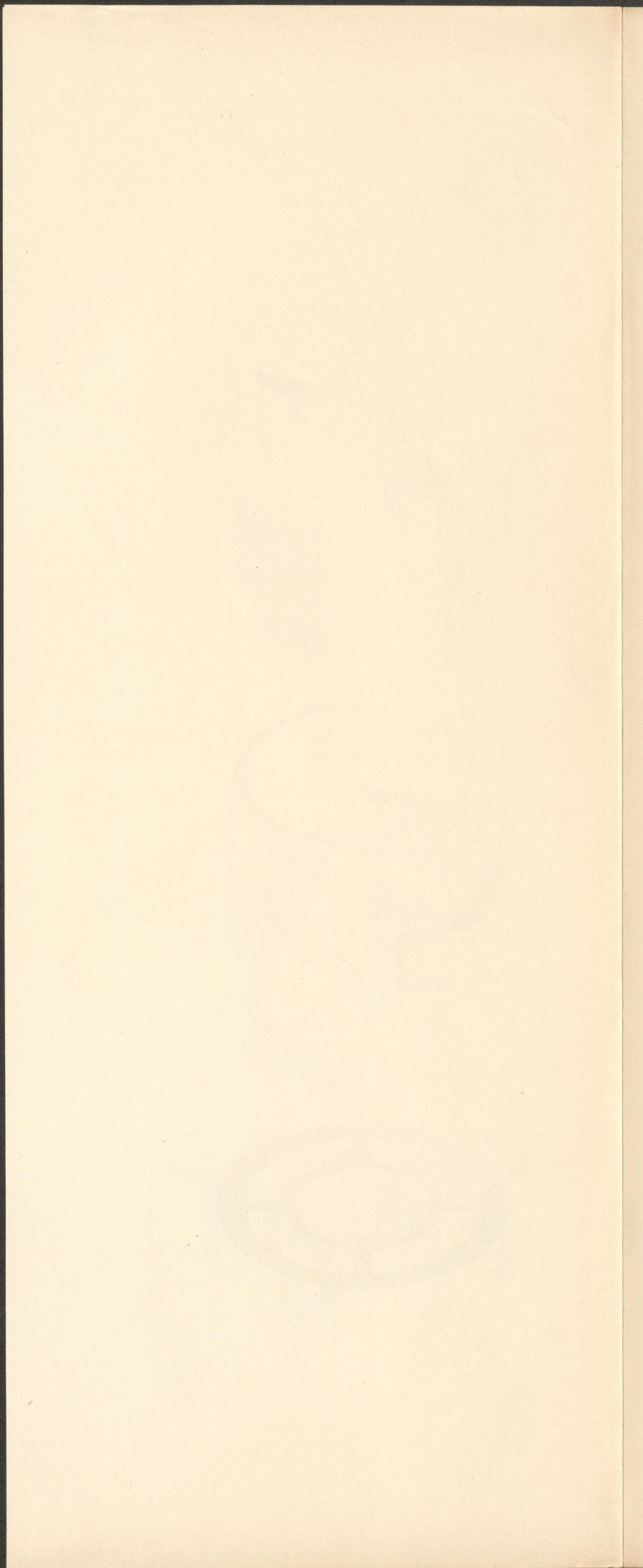






06
WJG
1199

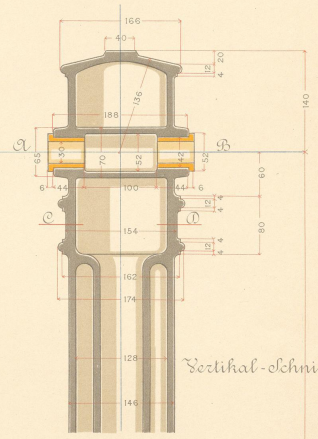
EK 938
K D/XV



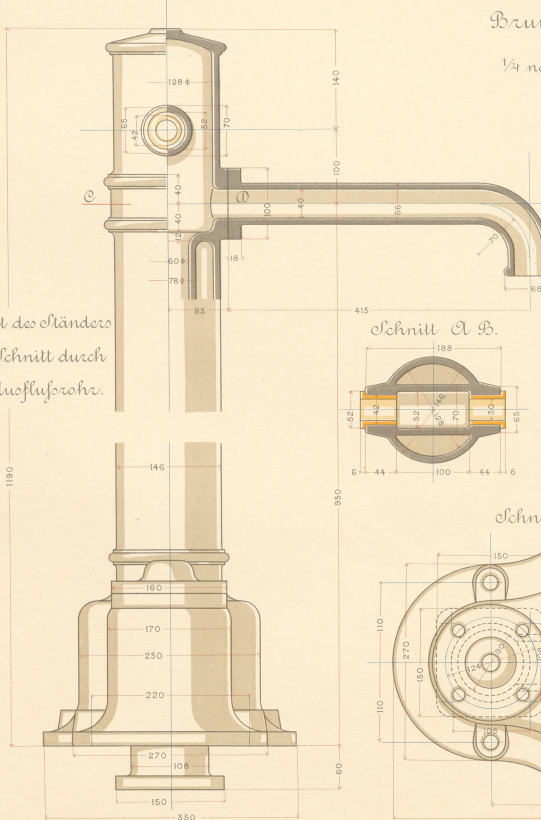
Brunnen - Ständer.

1/4 nat. Gr. Maße mm.

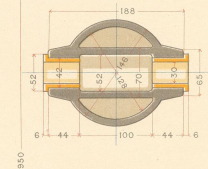
Ansicht des Ausflusrohres.



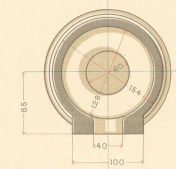
Ansicht des Ständers mit Schnitt durch das Ausflusrohr.



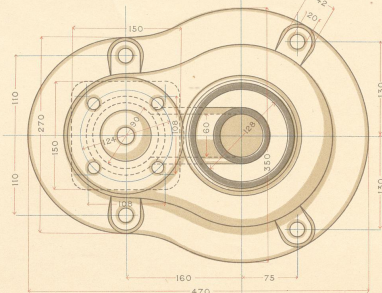
Schnitt A B.



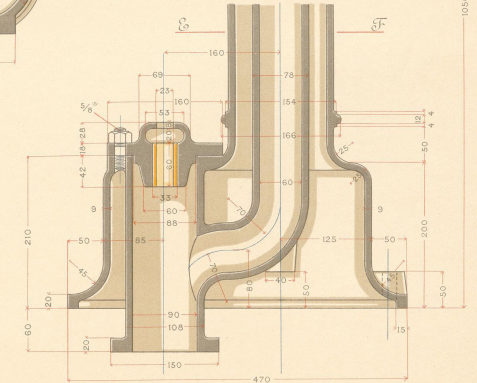
Schnitt C D.



Schnitt E F.



Vertikal-Schnitt.



Wohnort und Datum.



Namen.

E 4938
K D / XV



06
WTC
M499



06
WTG
1199

EK 938
K D/XV