



UNIVERSITÄTS-
BIBLIOTHEK
PADERBORN

**Vorlagen für den gewerblichen Fachunterricht an
technischen Lehranstalten insbesondere an
Gewerbeschulen**

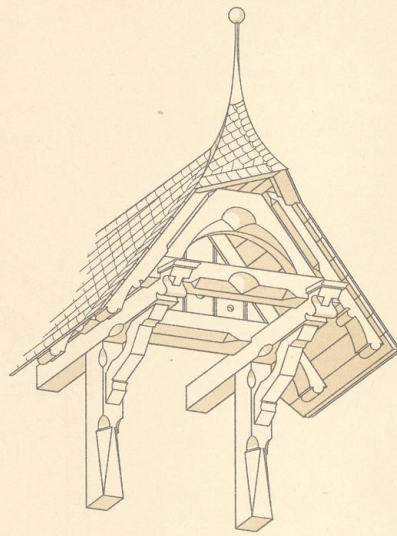
Kircher, Philipp

Karlsruhe, [1886 - 1889]

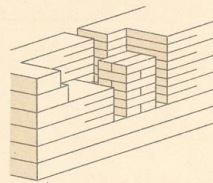
9. Giebelfaçade und Querschnitt des Ökonomiegebäudes.

[urn:nbn:de:hbz:466:1-97992](https://nbn-resolving.org/urn:nbn:de:hbz:466:1-97992)

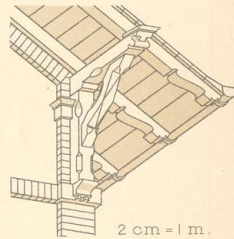
Entwurf Gebäudeanlage.



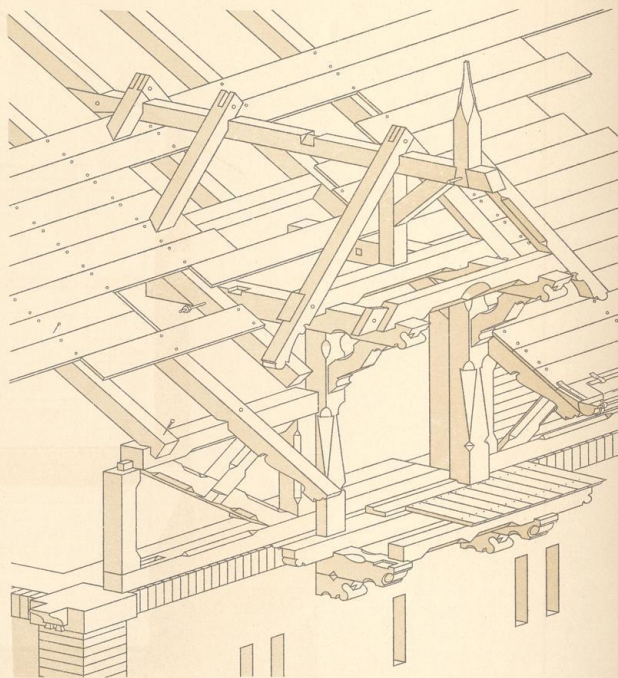
3 cm = 1 m.



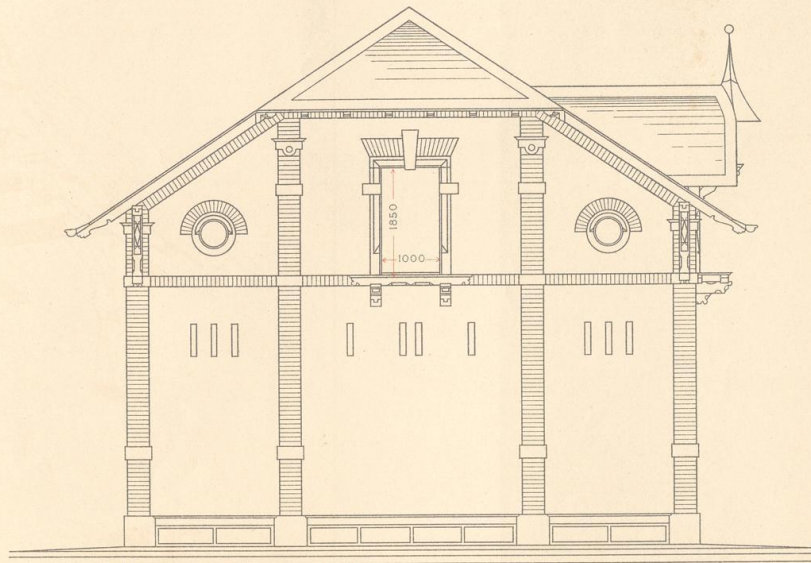
3 cm = 1 m.



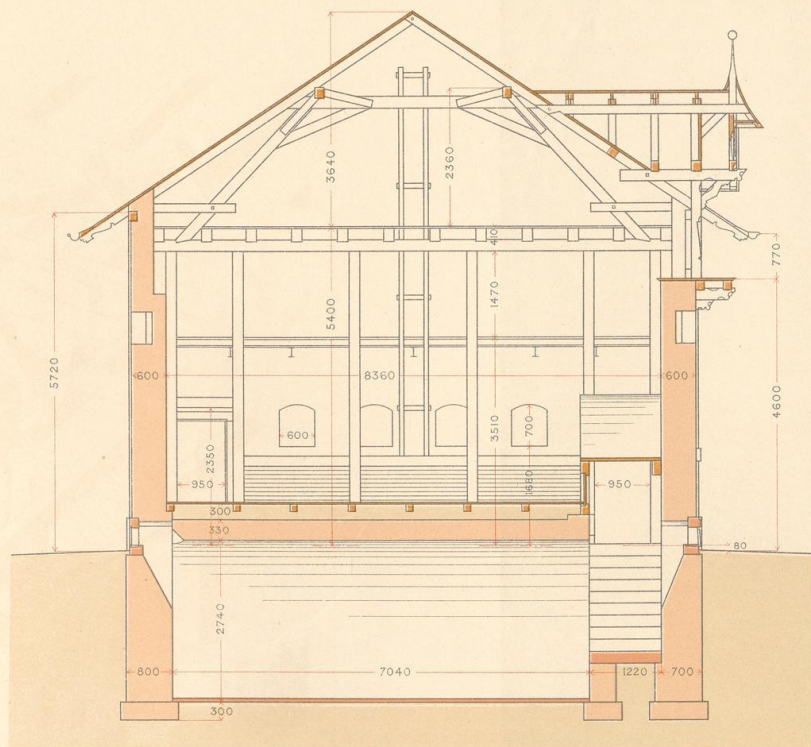
2 cm = 1 m.



3 cm = 1 m.



Giebelansicht.

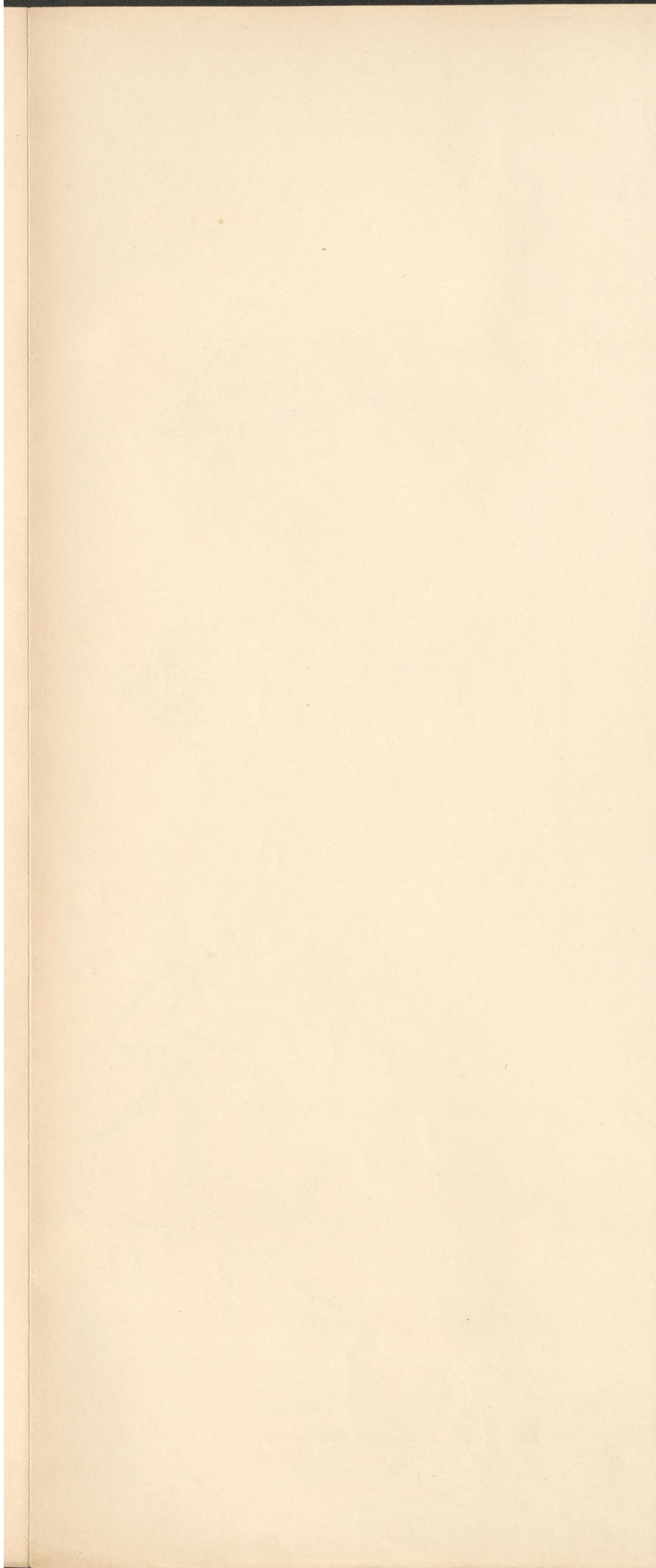


Querschnitt AB.



Wohnort und Datum.

Namen.





06
WTG
1199

EK 938
K D/XV