



UNIVERSITÄTS-  
BIBLIOTHEK  
PADERBORN

## **Die interessantesten Chörlein an Nürnberg's mittelalterlichen Gebäuden**

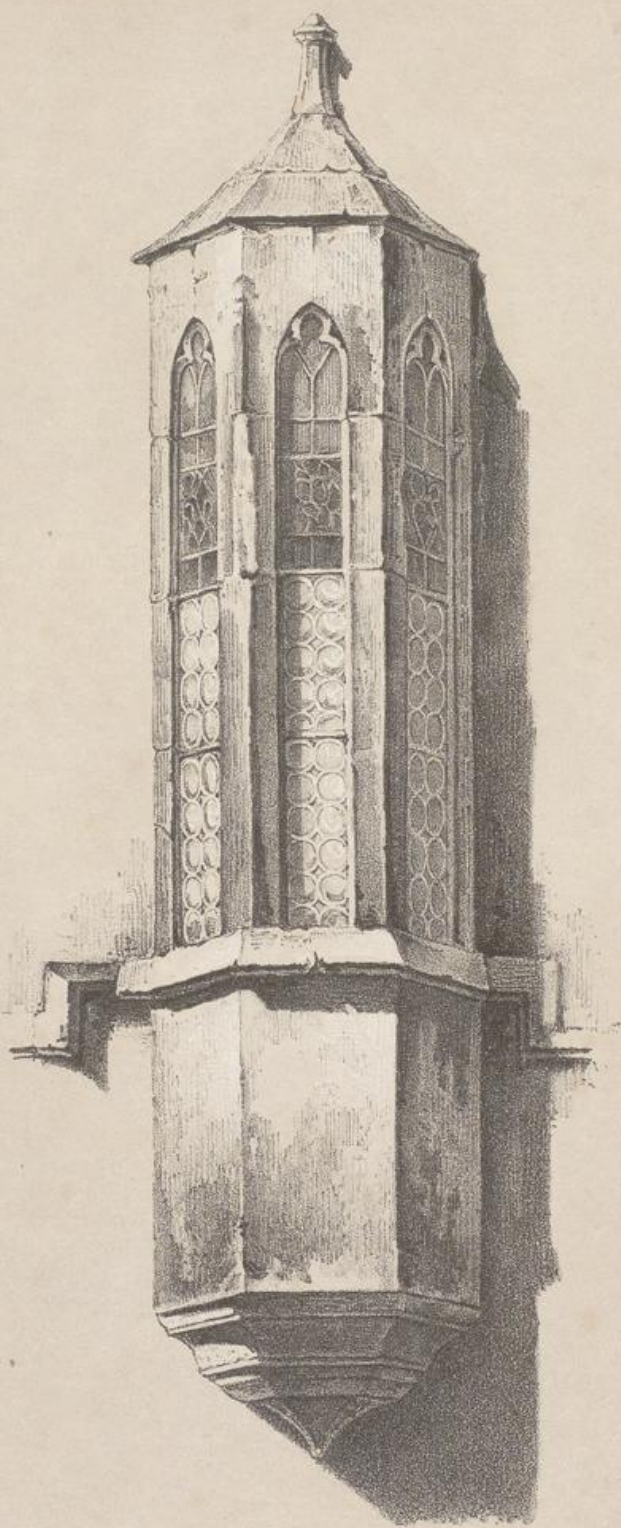
**Mayer, Friedrich**

**Nürnberg, [1847]**

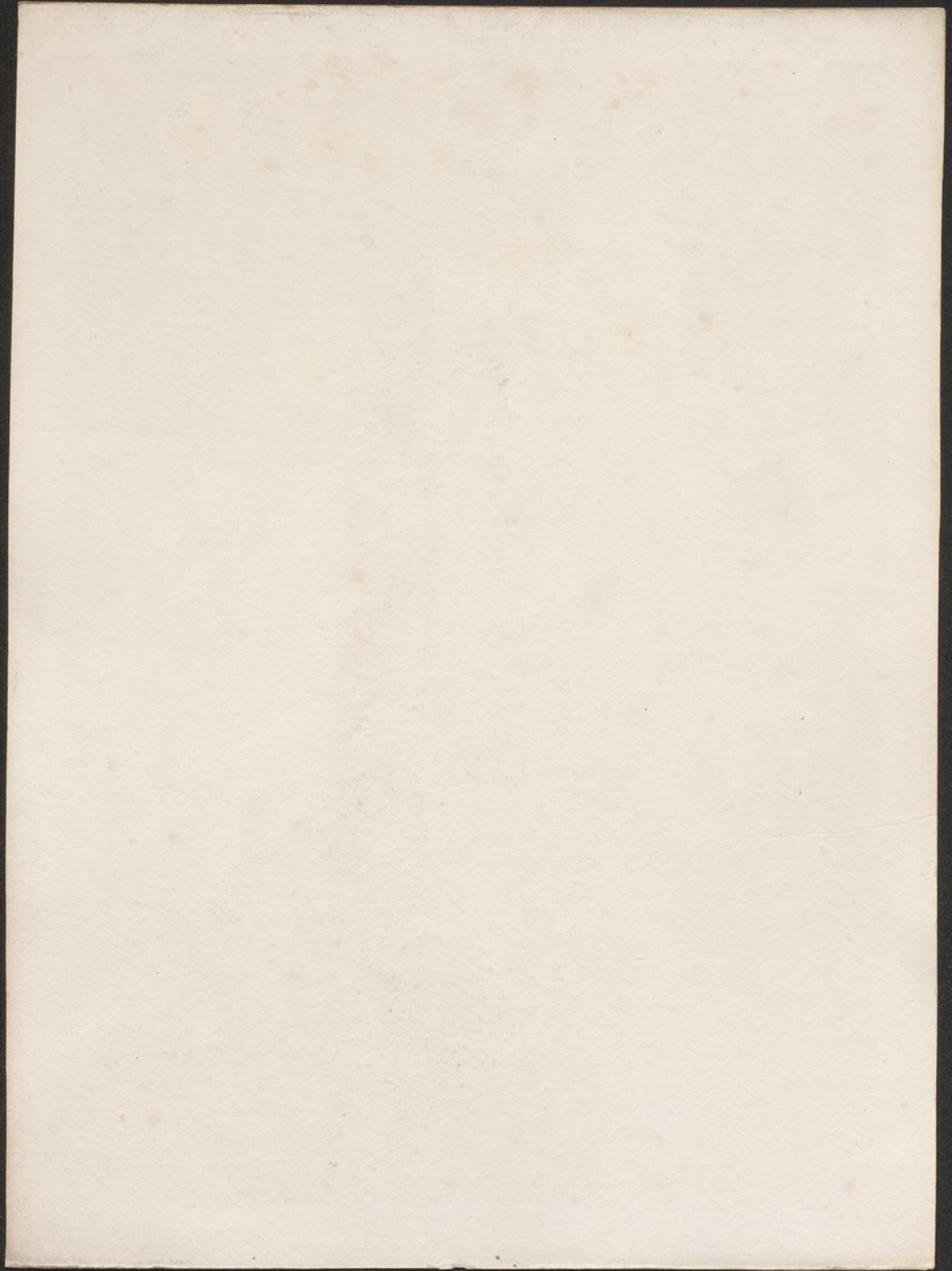
Illustrationen

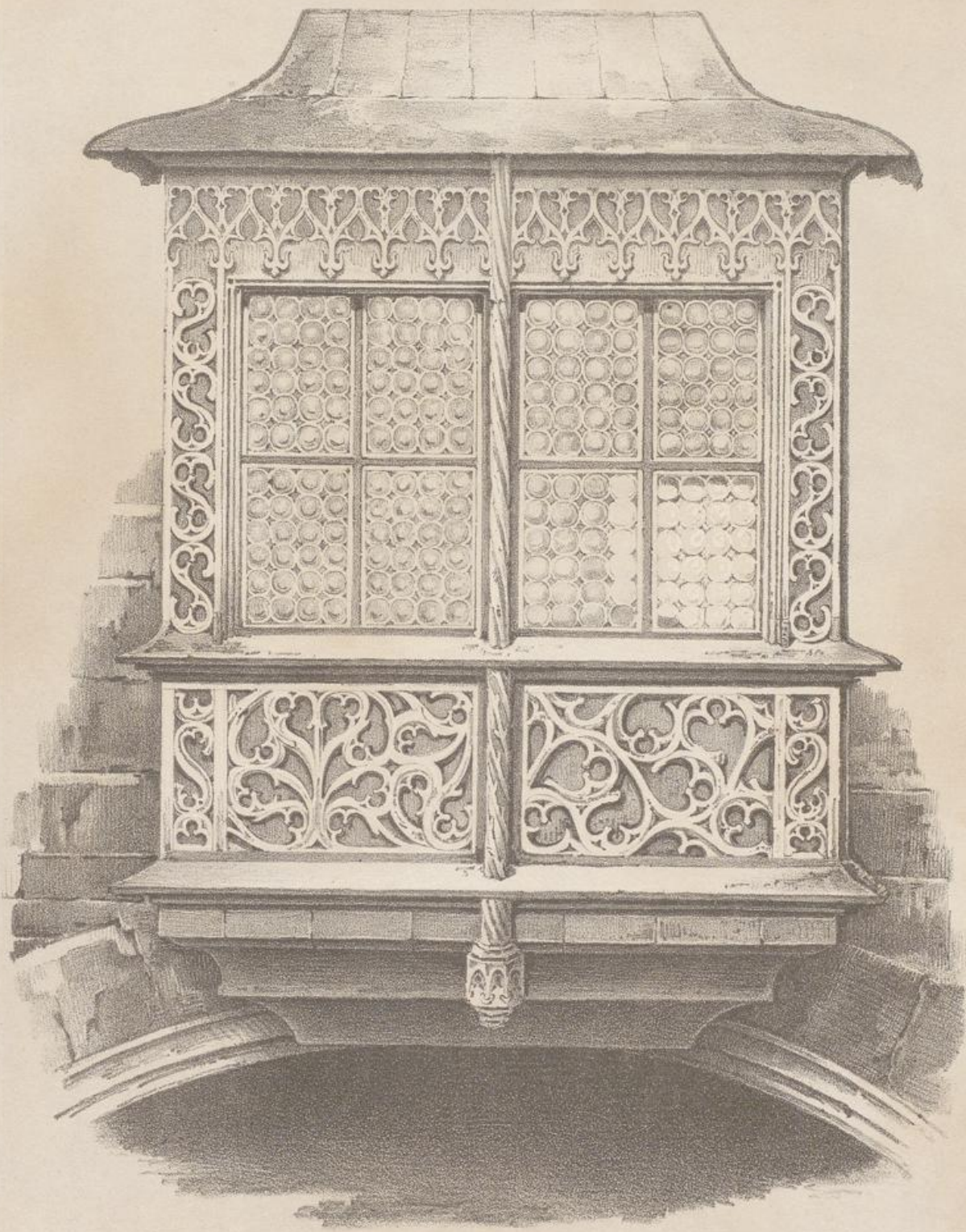
---

[urn:nbn:de:hbz:466:1-98069](https://nbn-resolving.org/urn:nbn:de:hbz:466:1-98069)

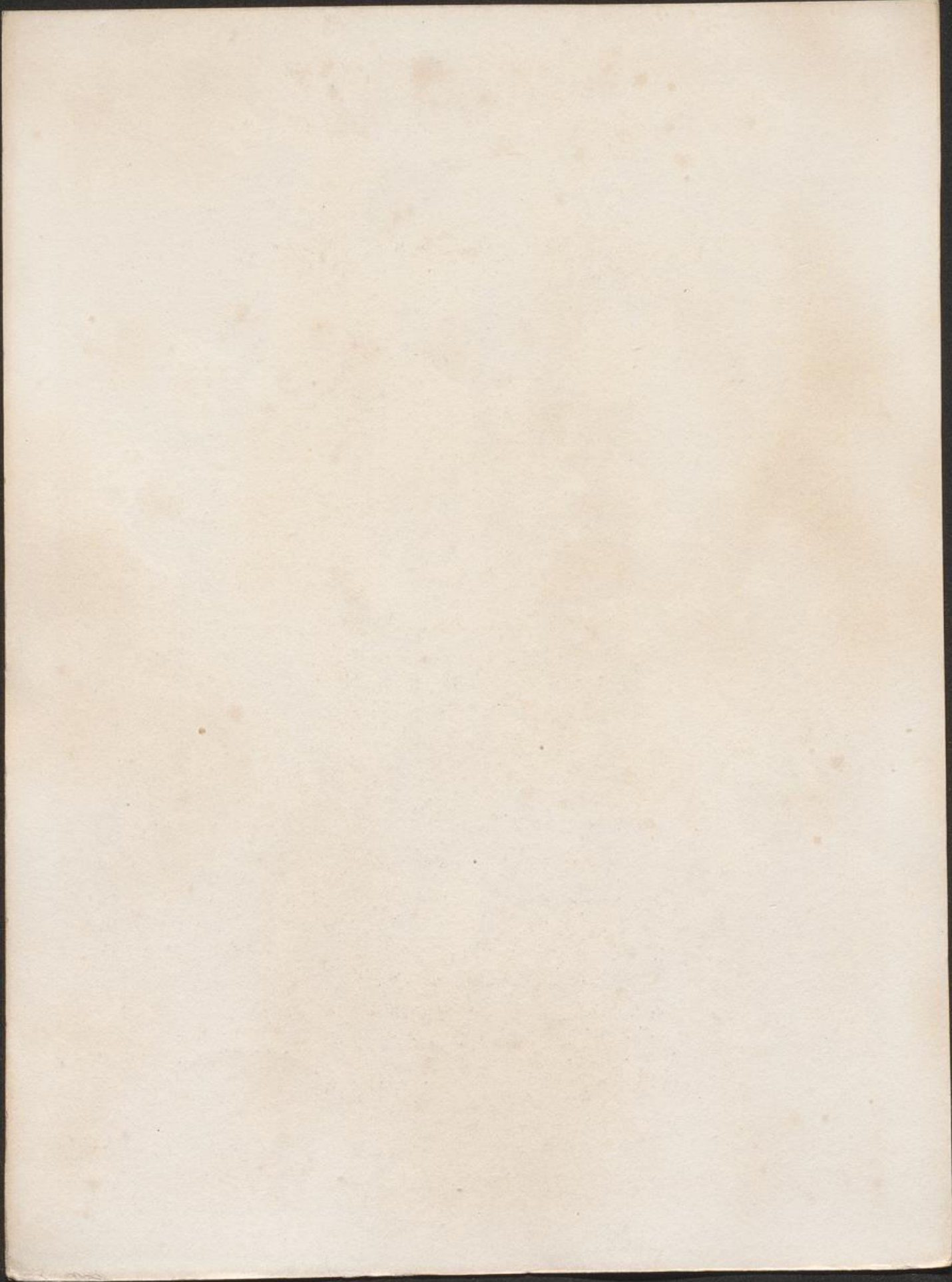


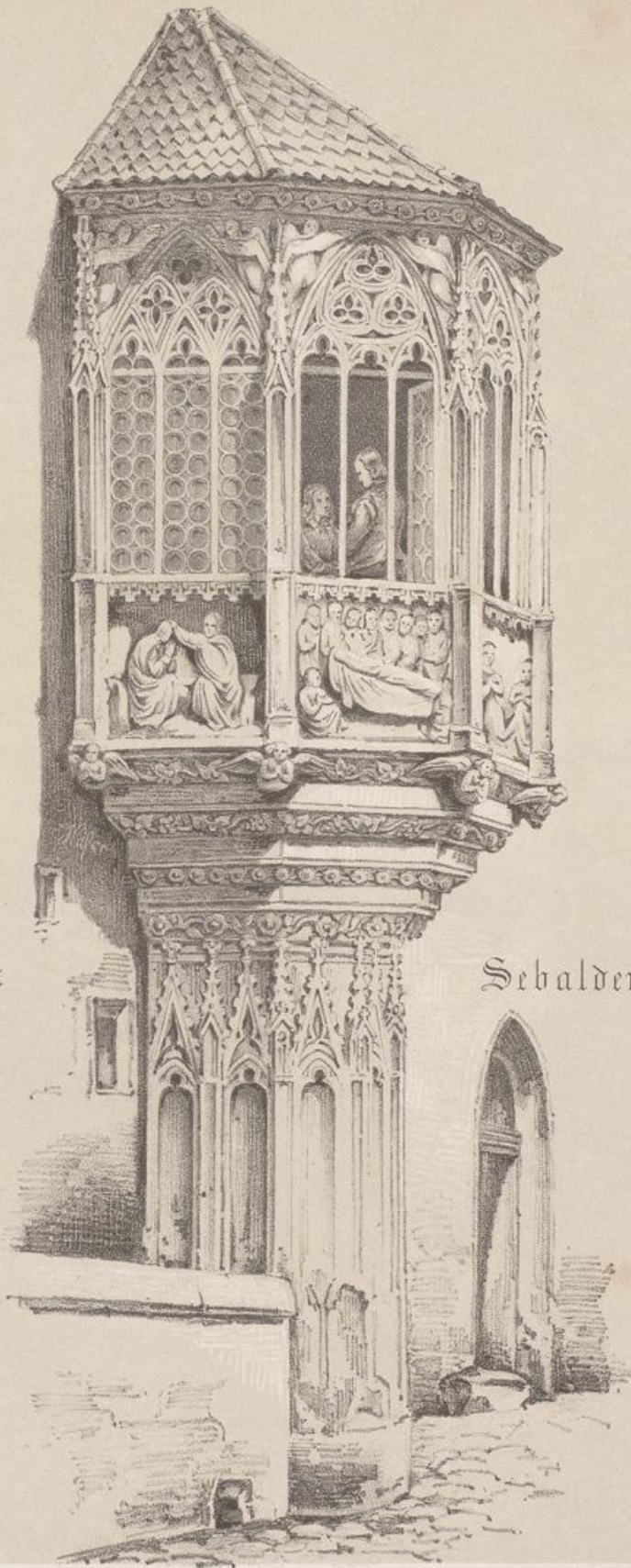
Am alten Theil des Rathhauses.





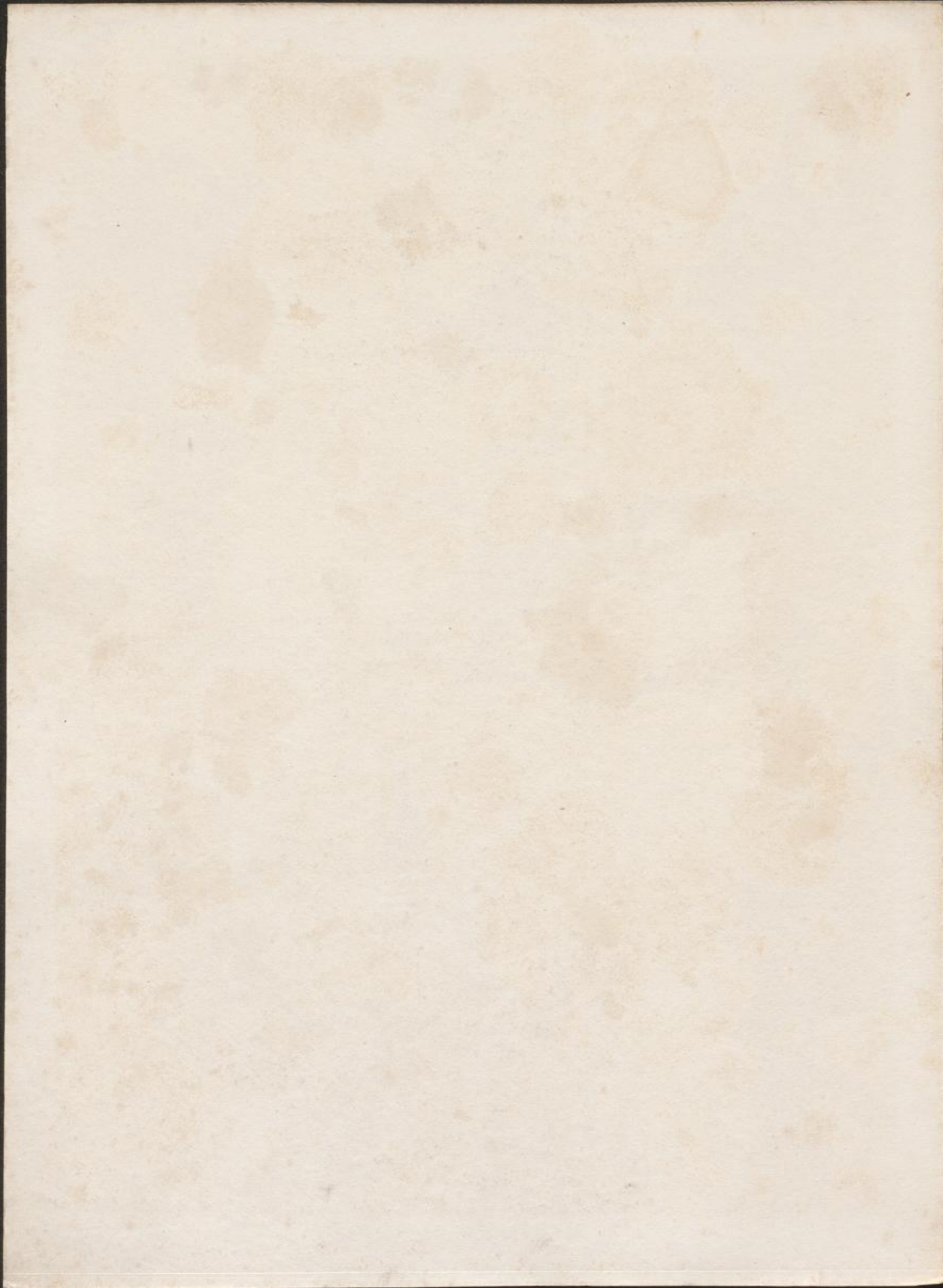
Im Rathhaus - Hofe.

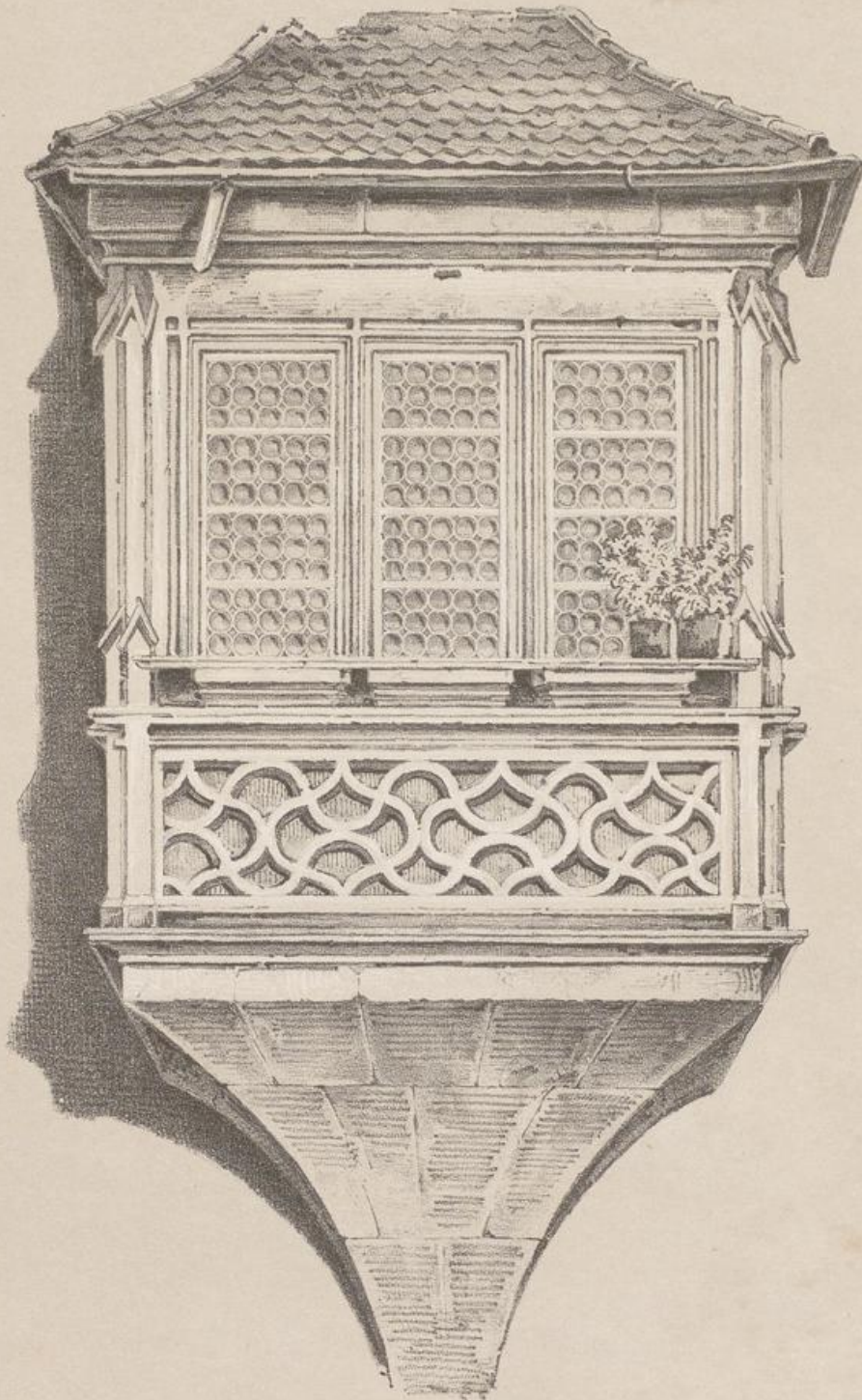




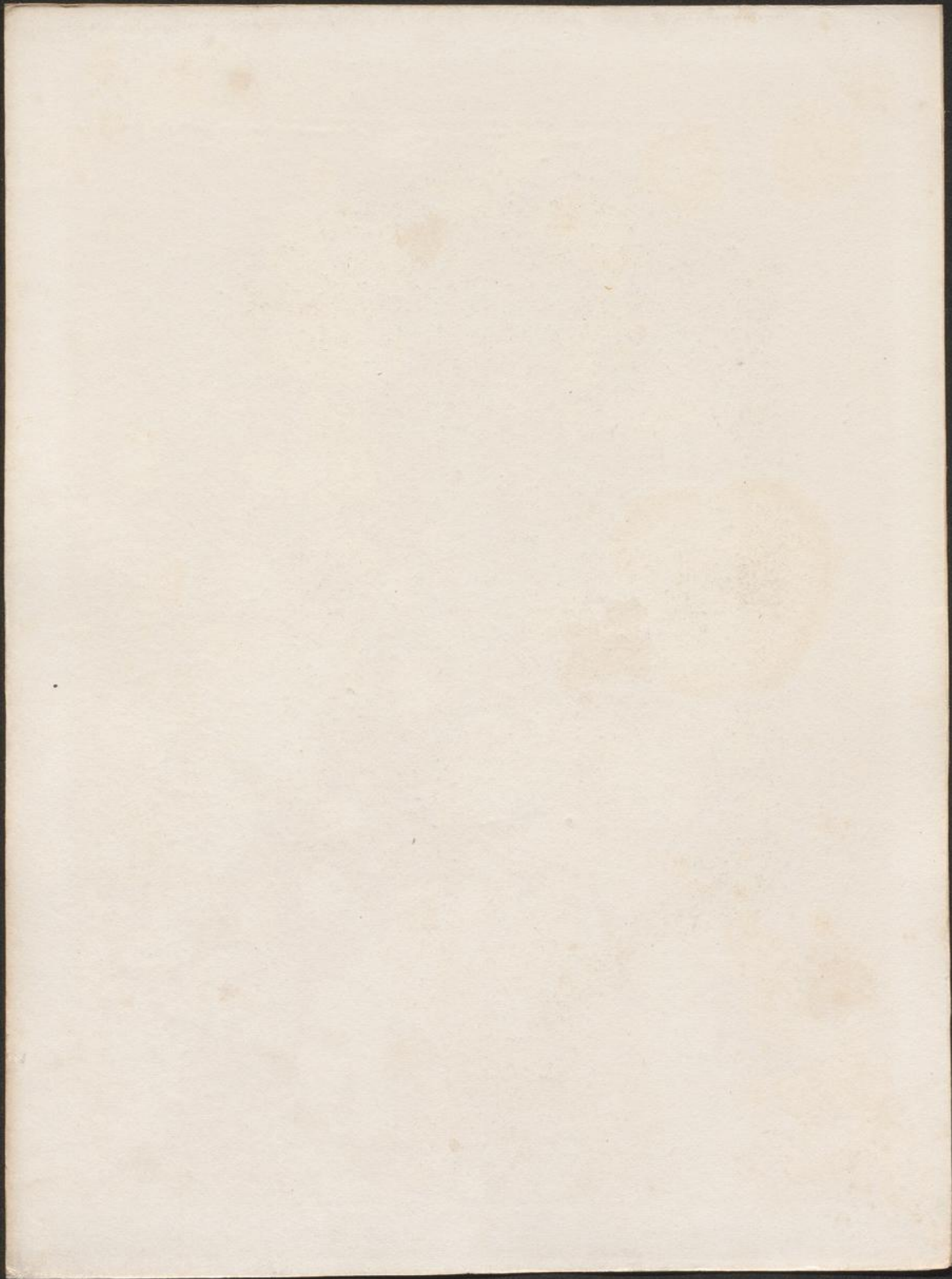
Haupt-Chor am

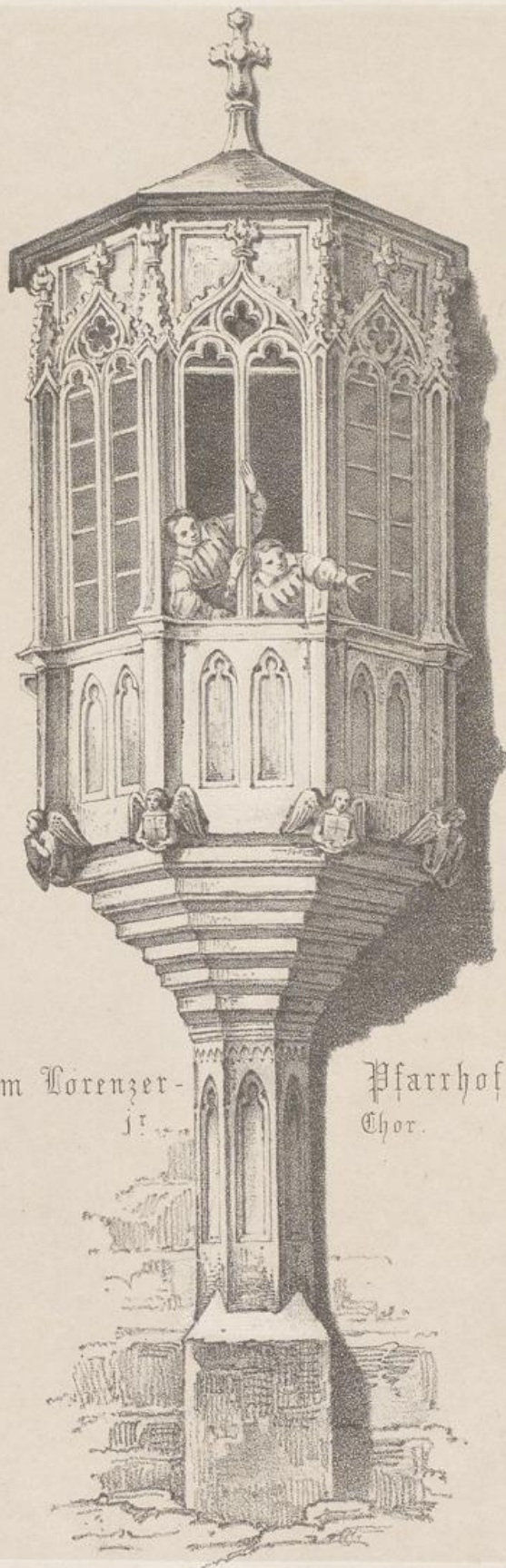
Sebalder Pfarrhof.





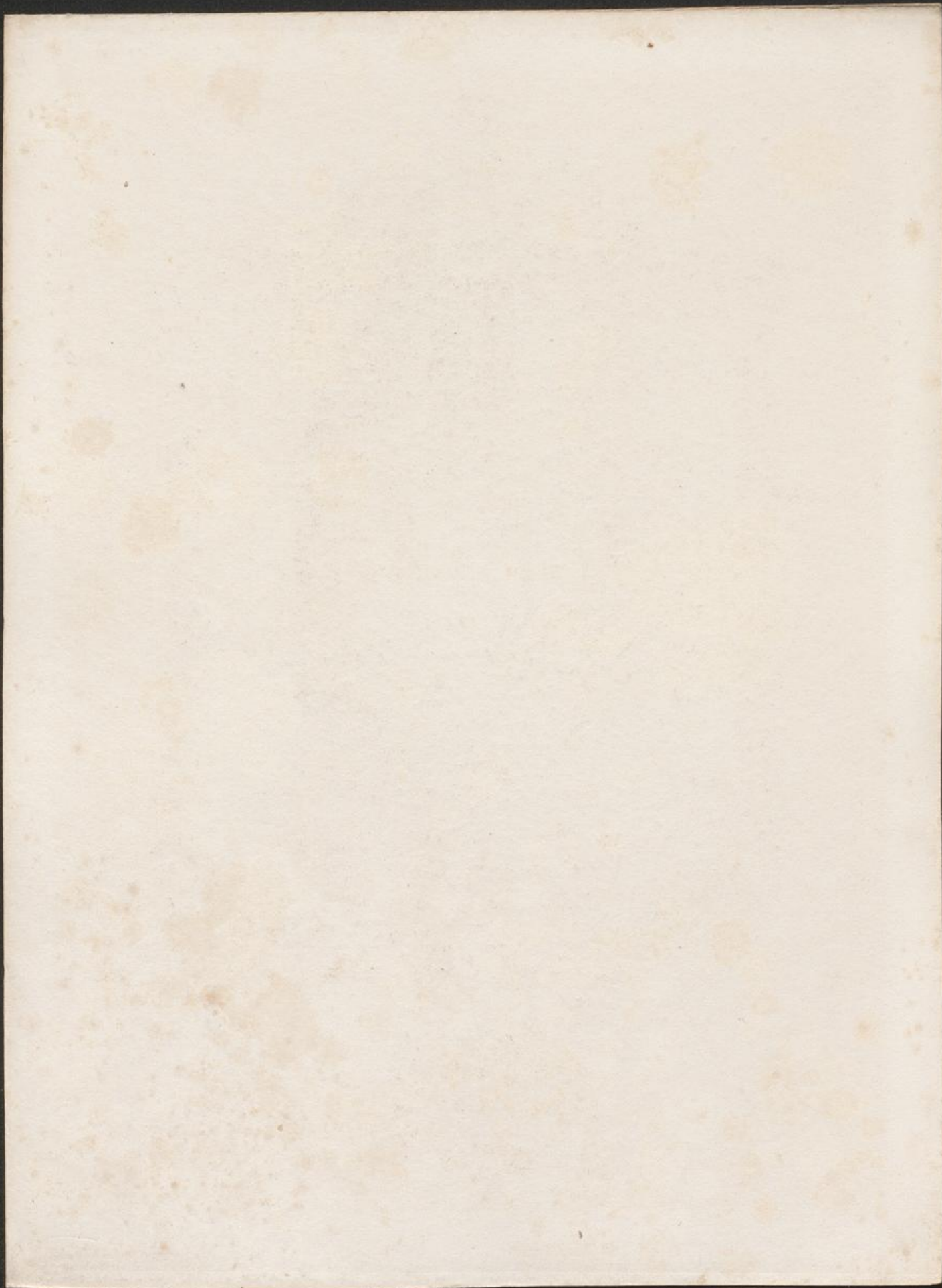
Am Sebalder Pfarrhof  
2<sup>ter</sup> Chor.

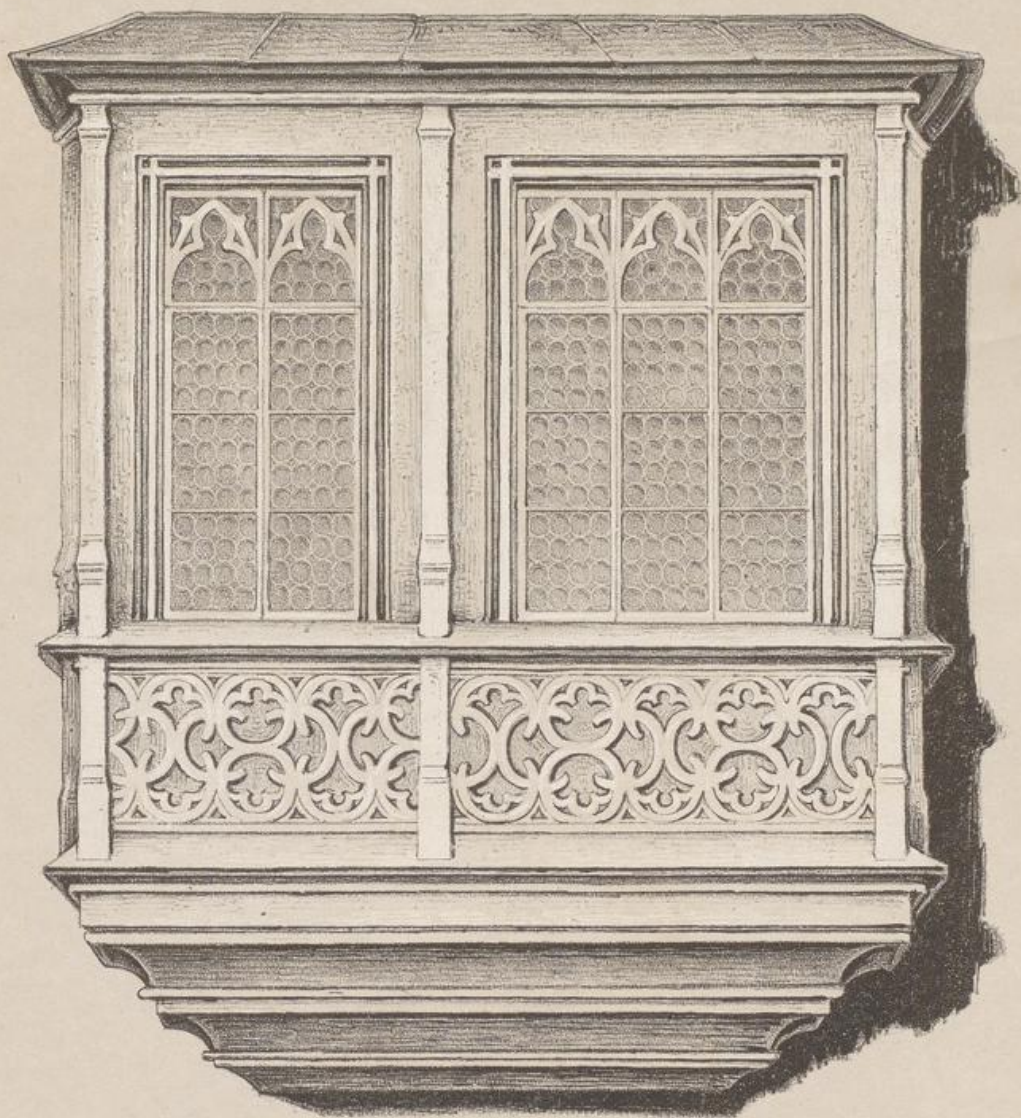




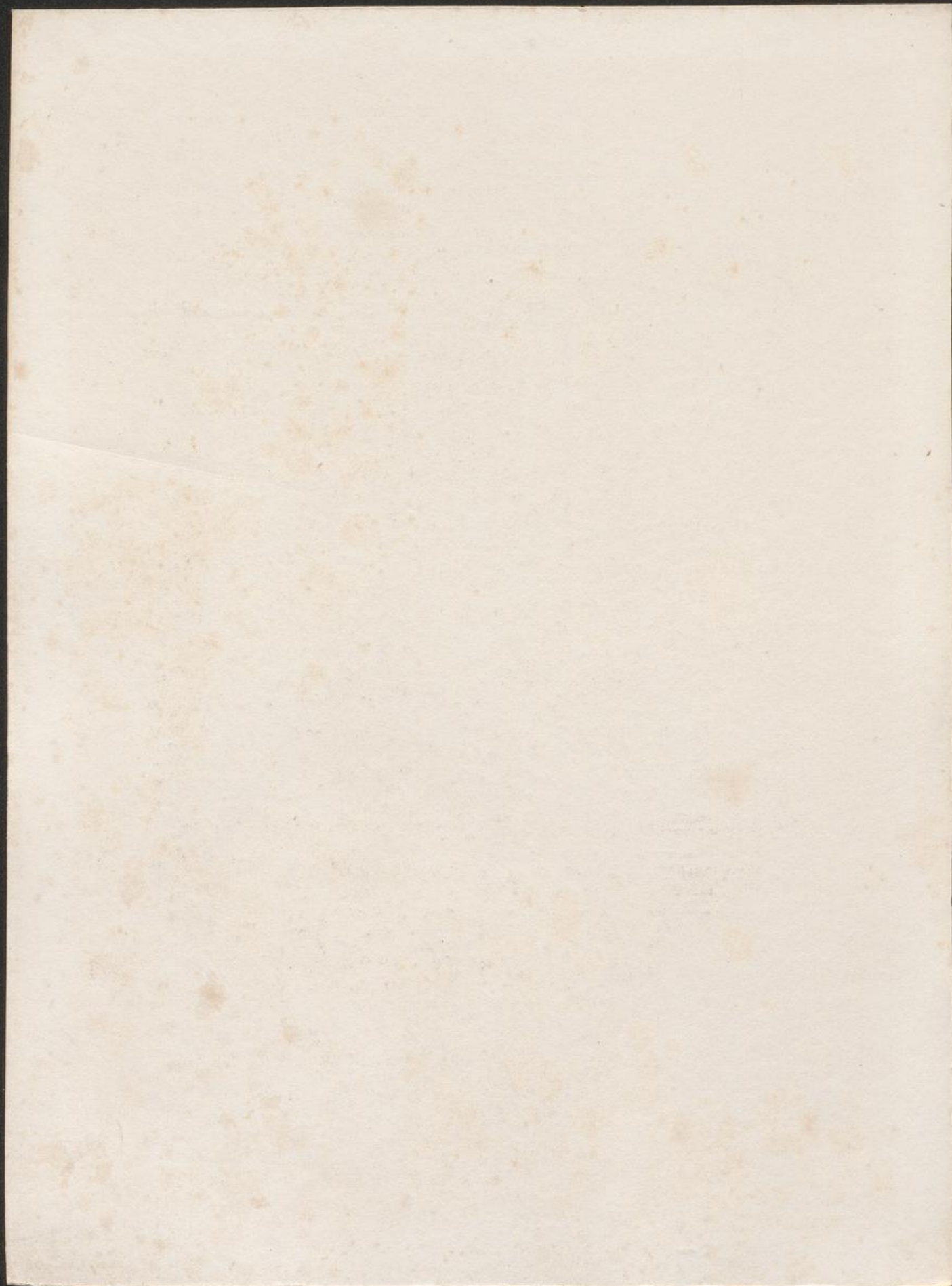
Am Lorenzer-  
St.

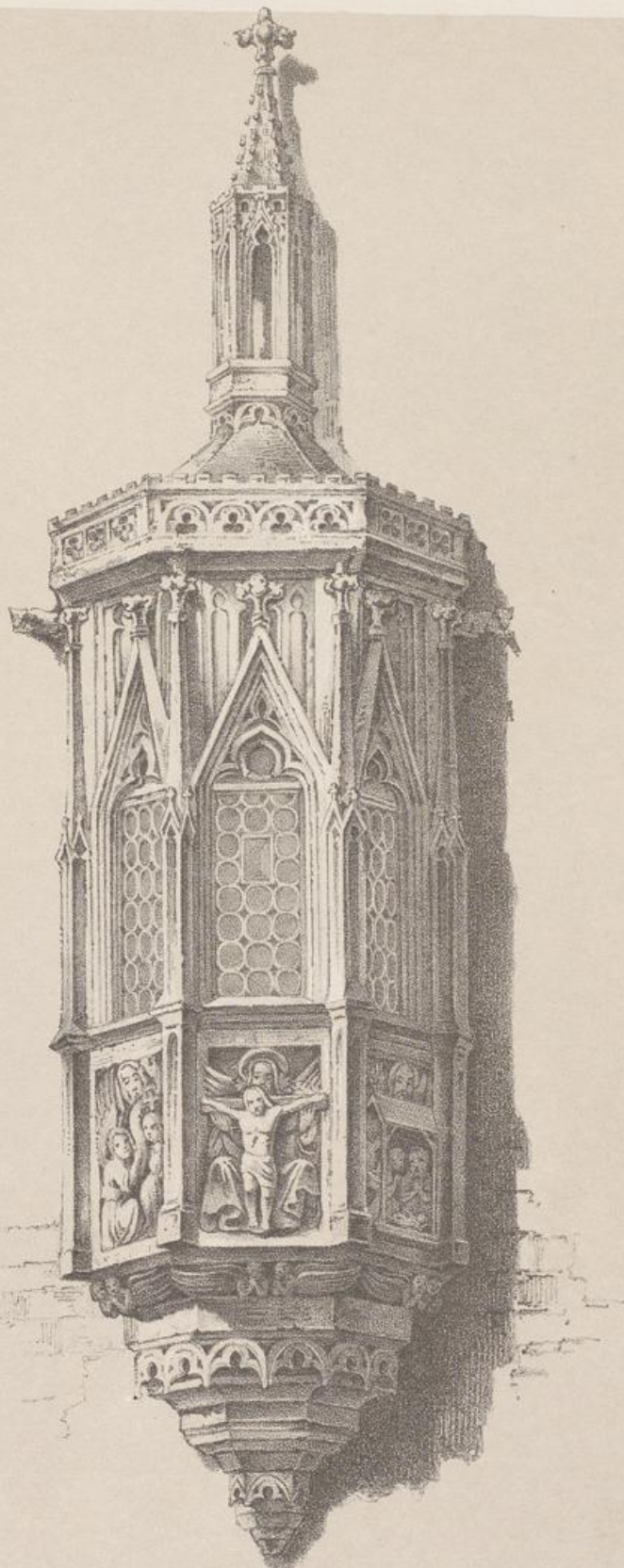
Pfarrhof  
Chor.



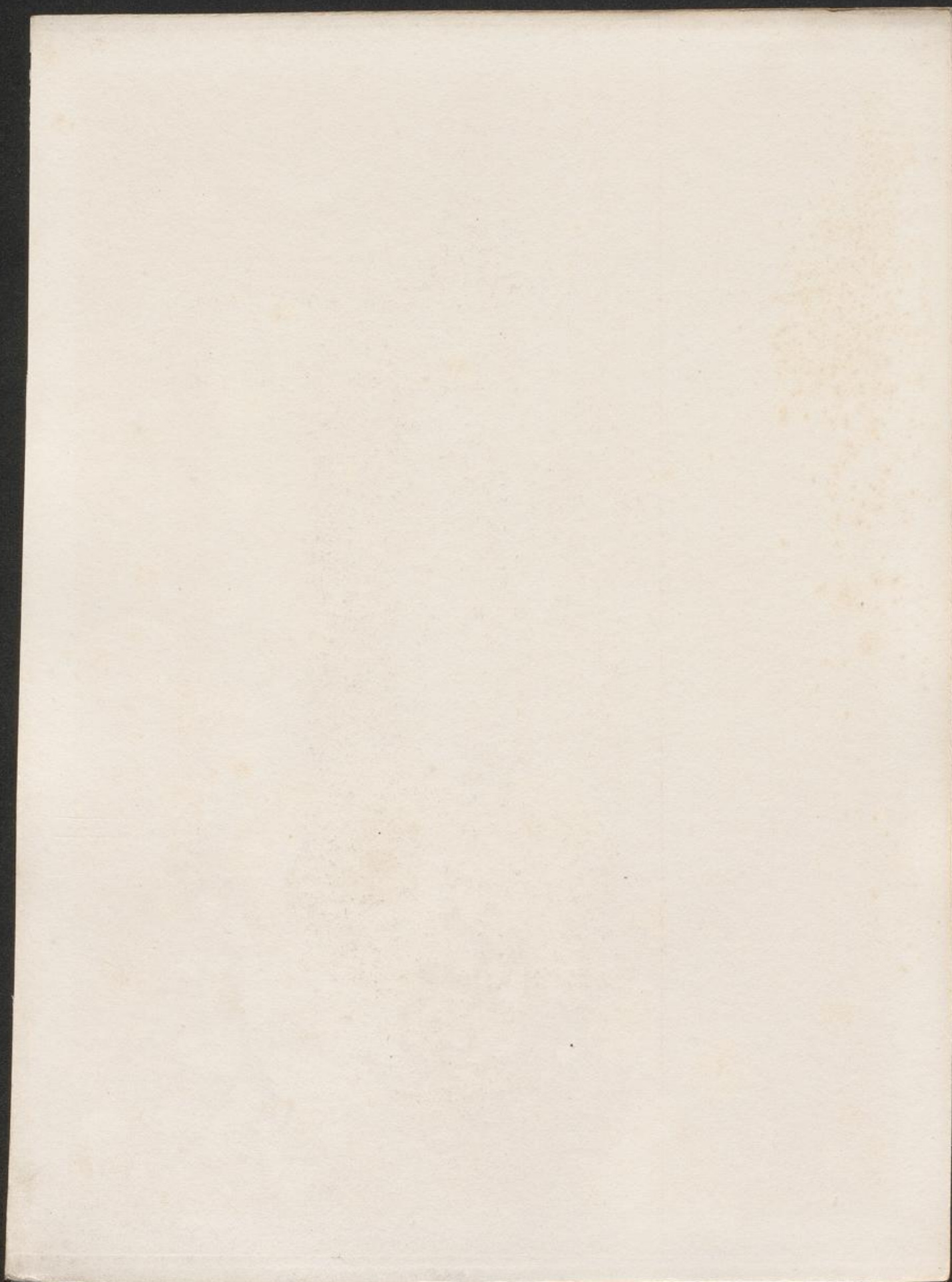


Am Lorenzer Pfarrhof  
25 Chor.





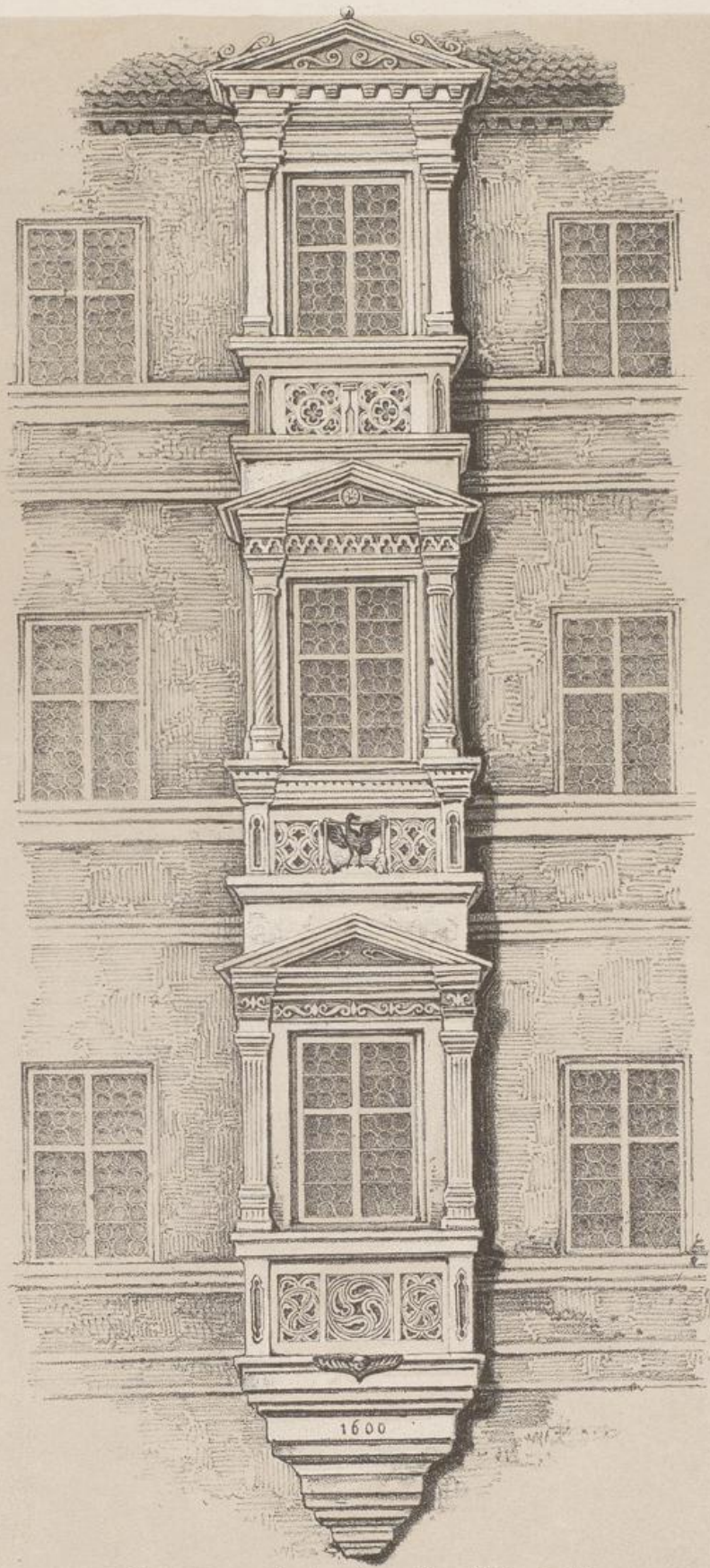
Am Hallauer-Haus.





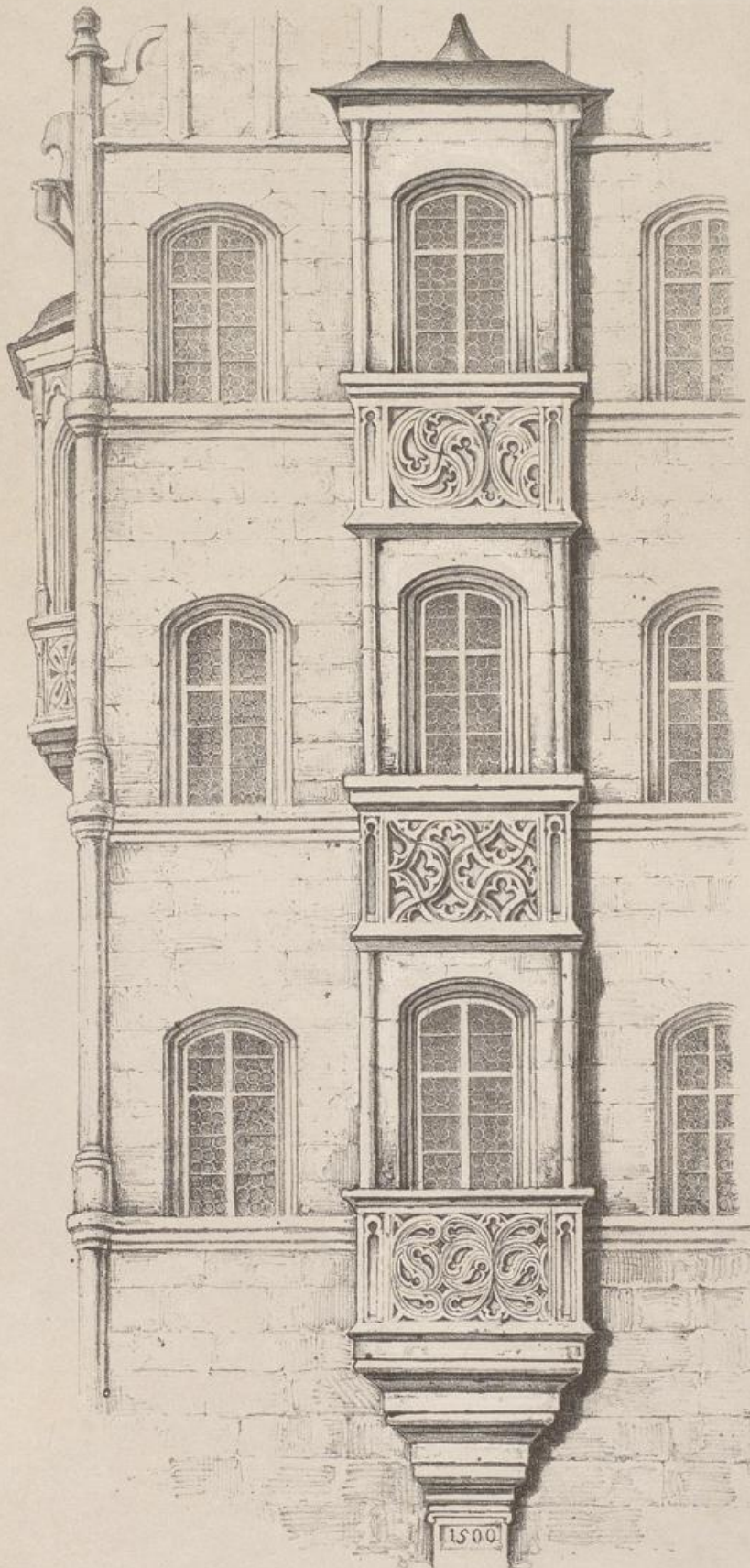
In der Sebaldus - Kirche.



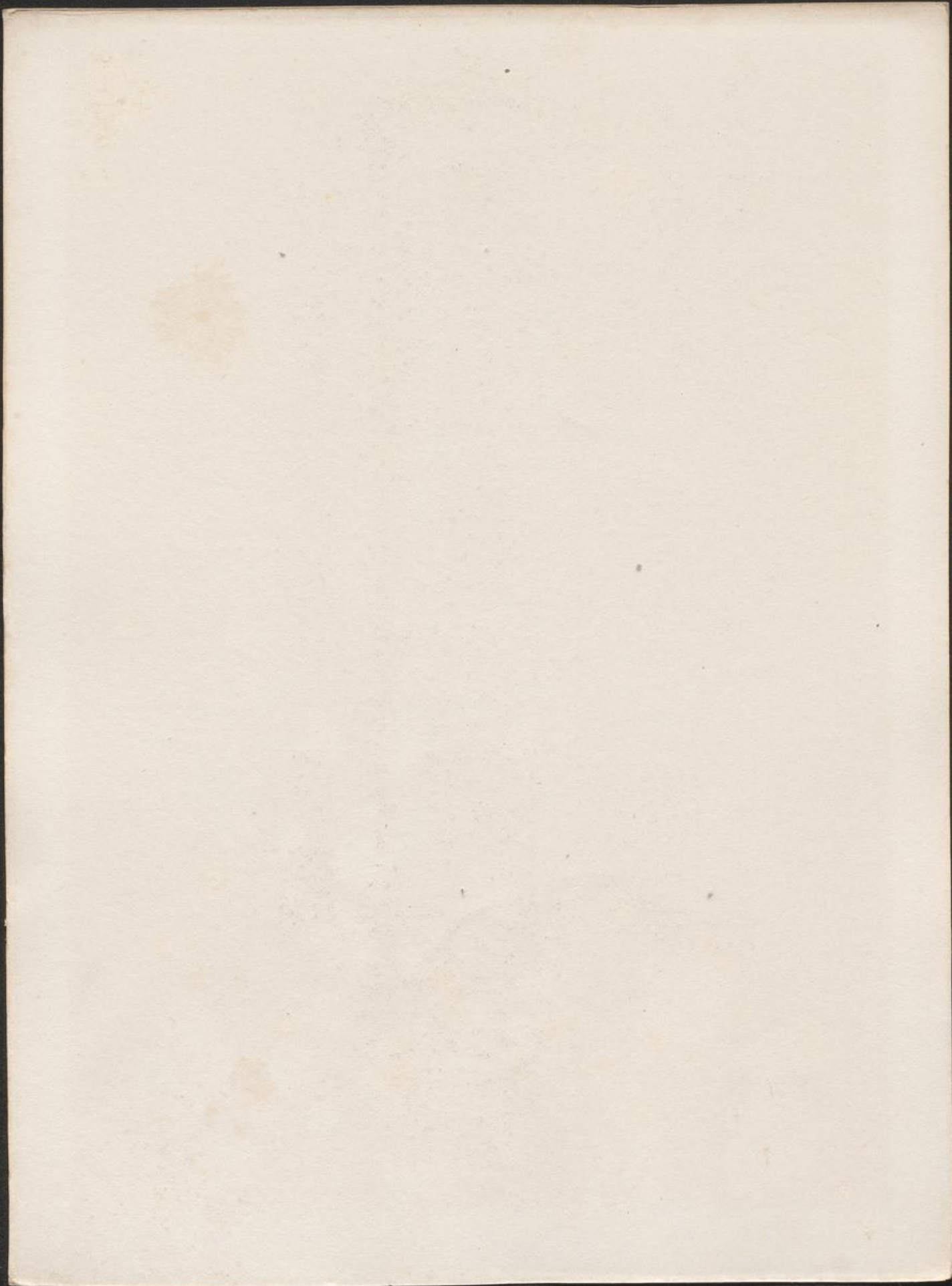


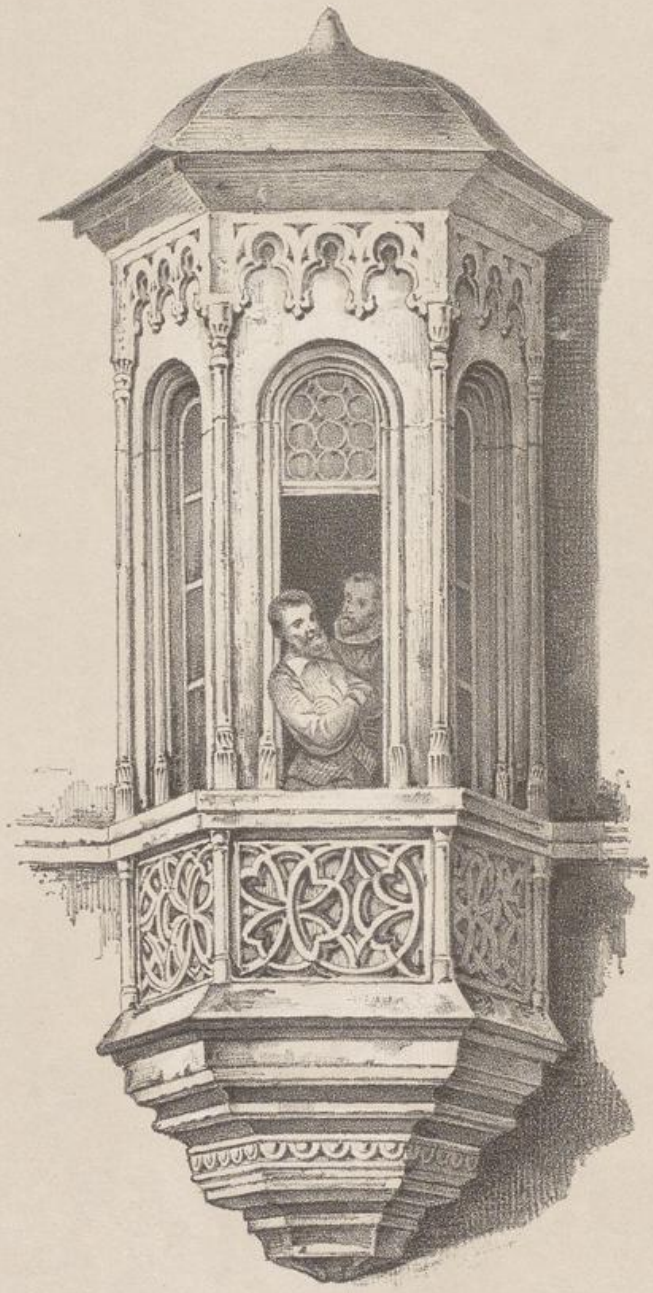
In der Adlerstraße N<sup>o</sup>. 306.





Am Eckhaus der Söldnersgasse, (1<sup>r</sup> Chor.)



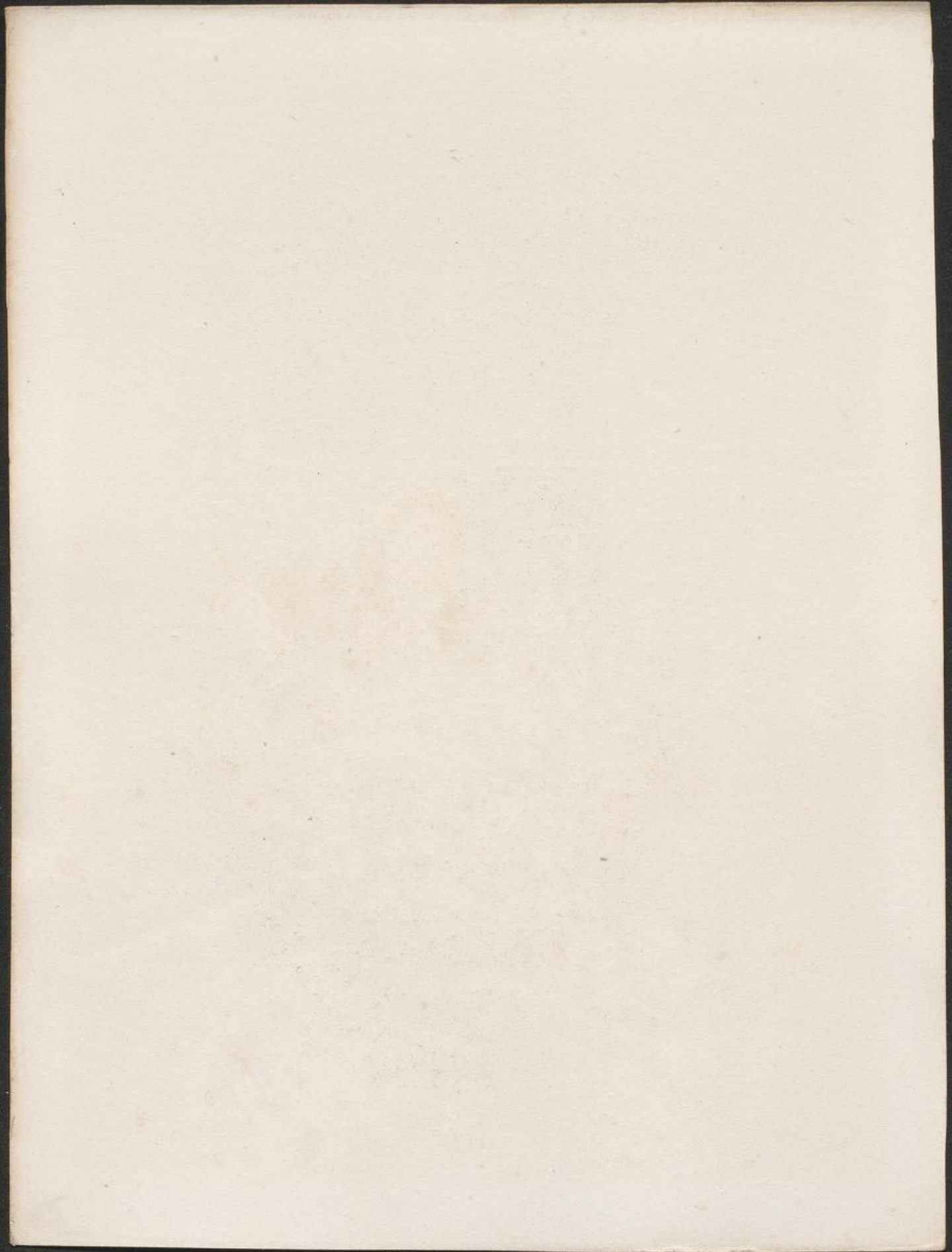


Am Eckhaus der Söldnergasse.  
.2<sup>r</sup> Chor.



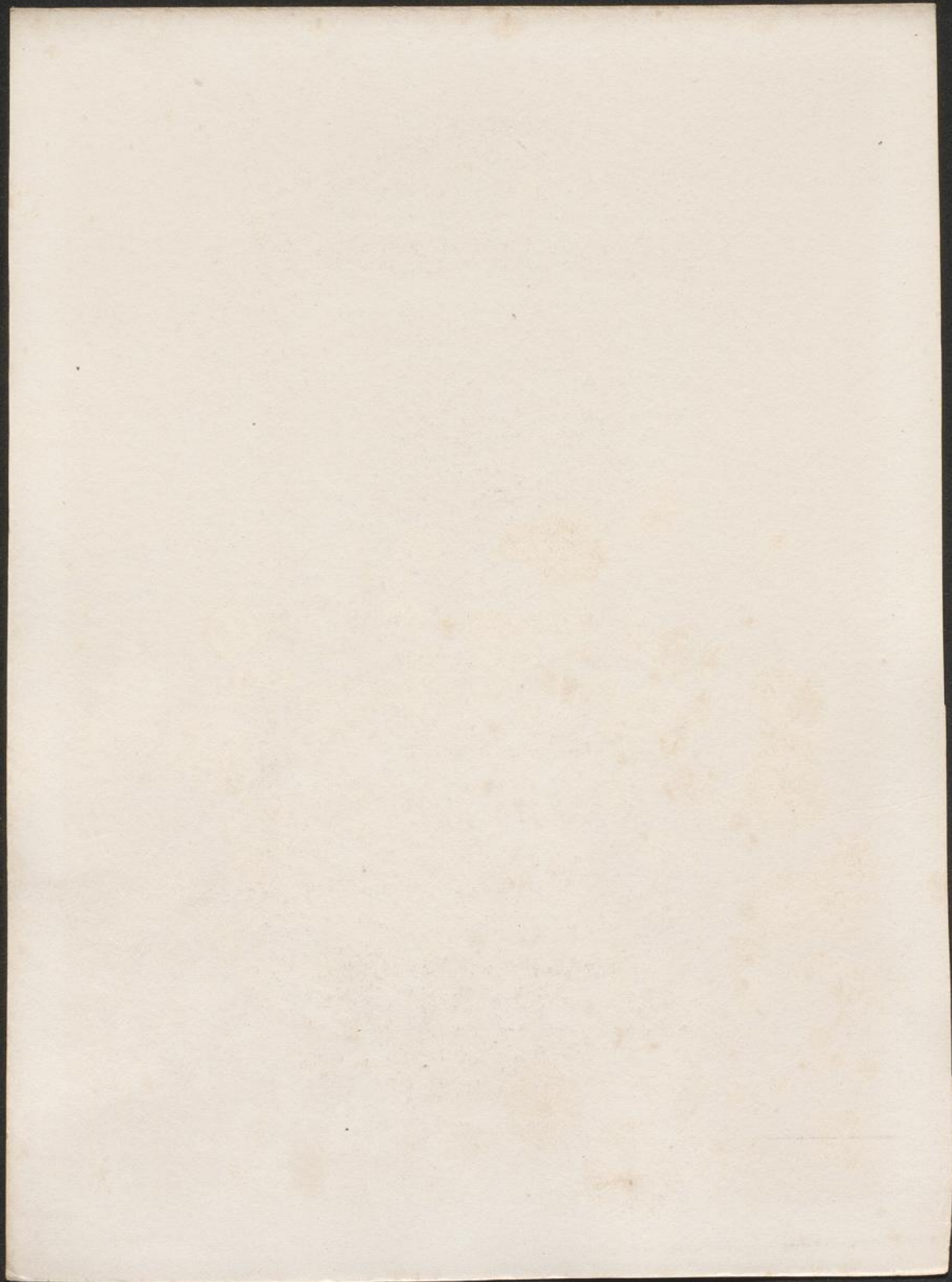


In der Paniergasse S. 733.



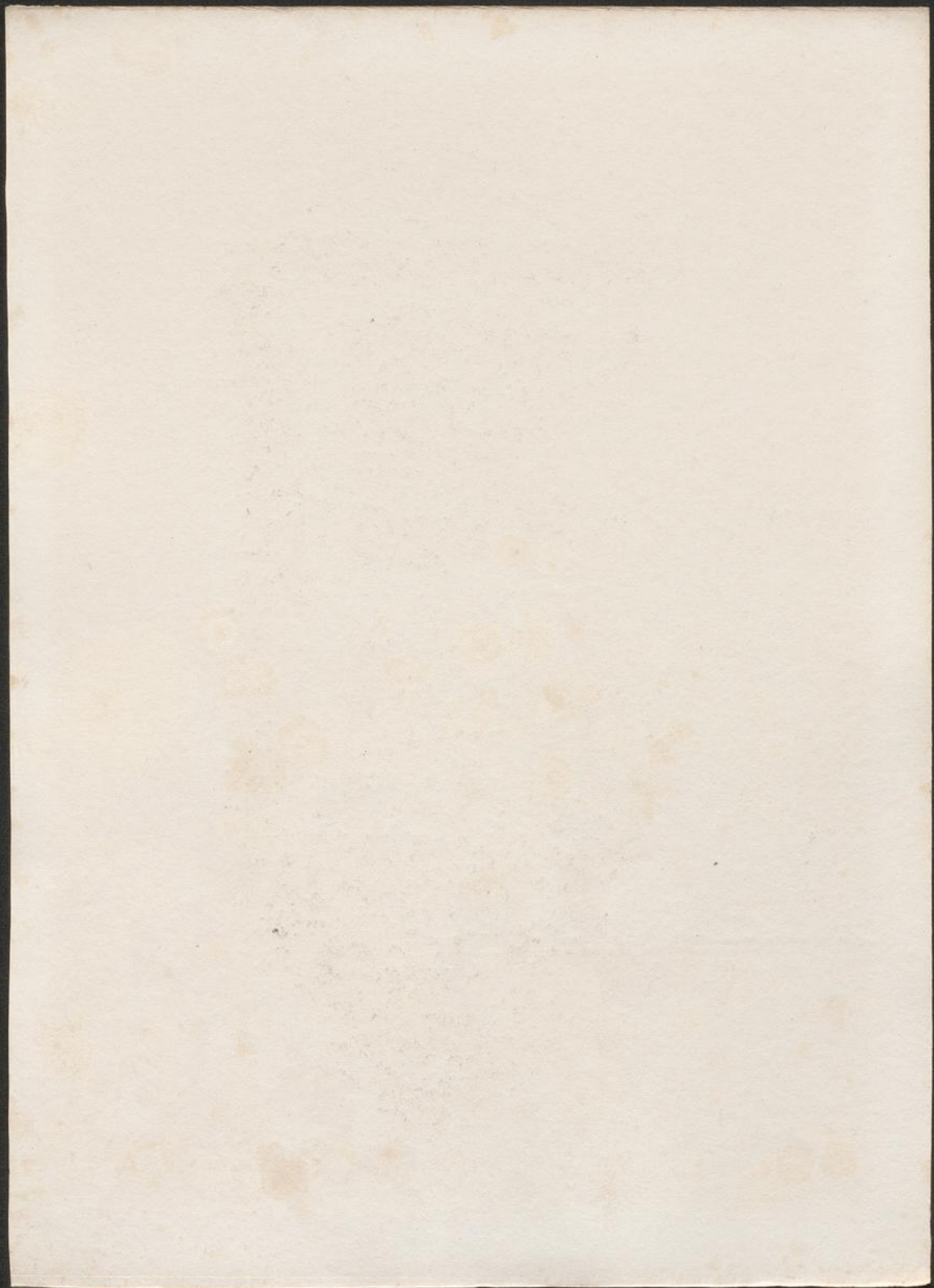


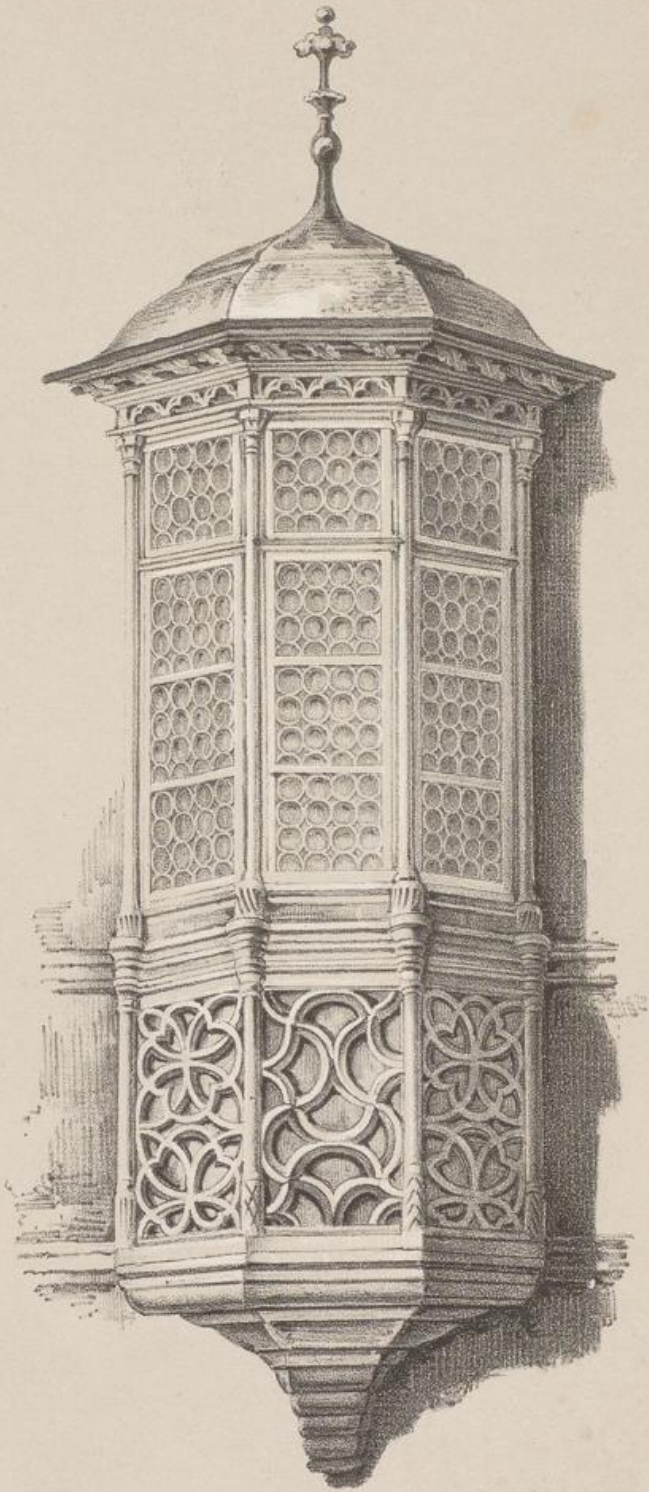
Am Dötschmannsplatz.





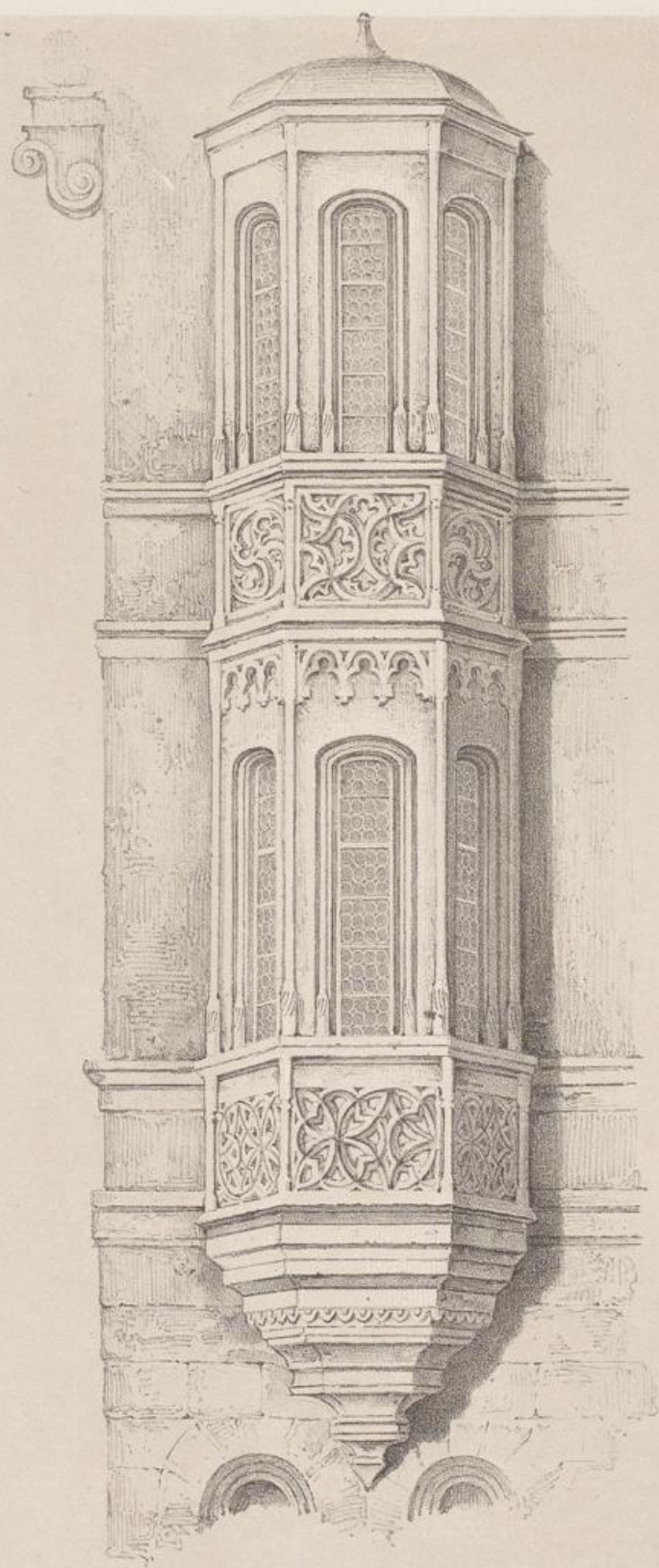
Im Prechtelsgäßlein, S. 925.





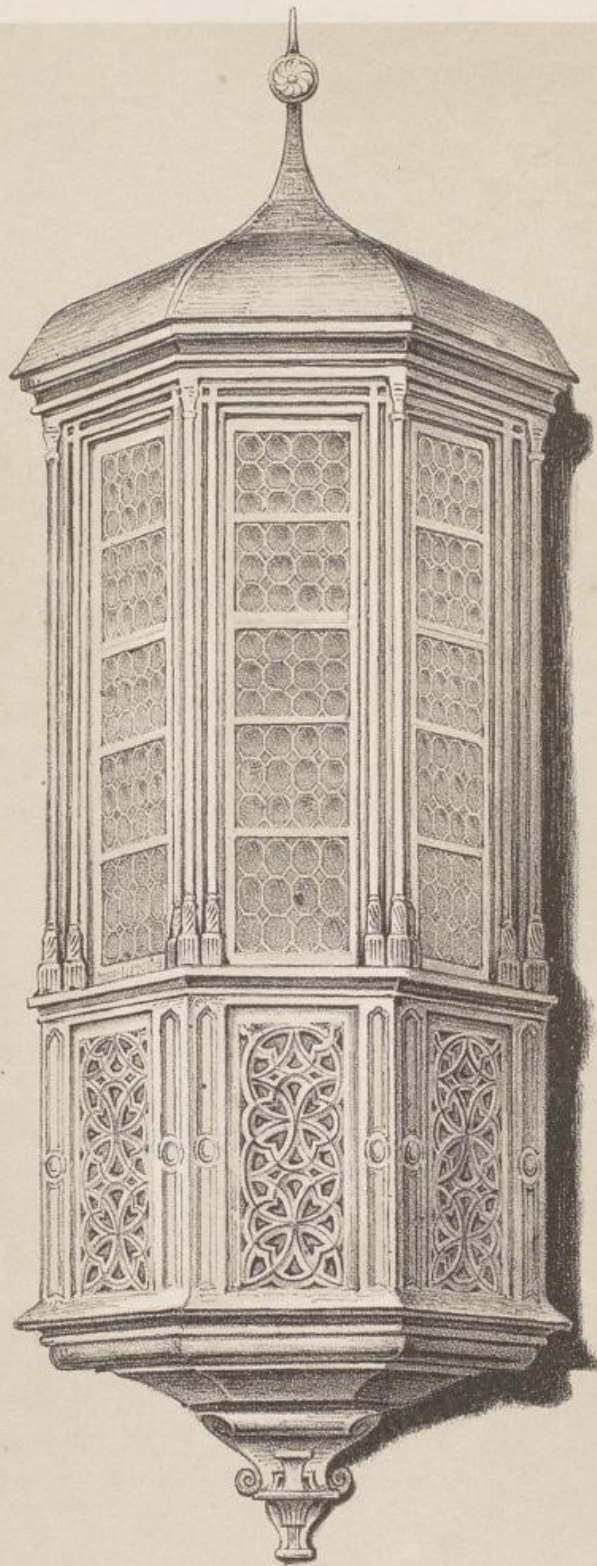
In der Judengasse.





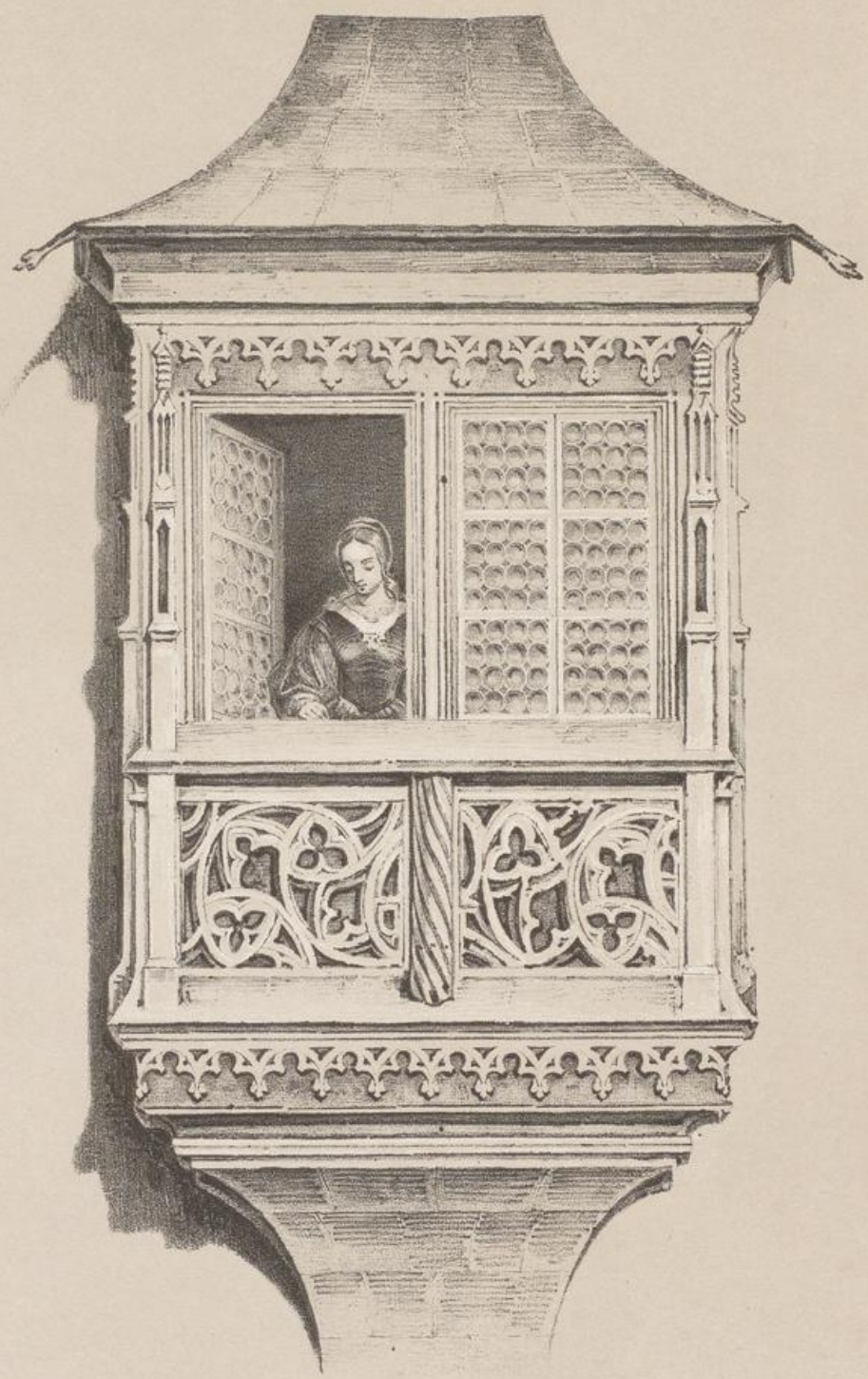
Am Eck der neuen Gasse S. 1199.



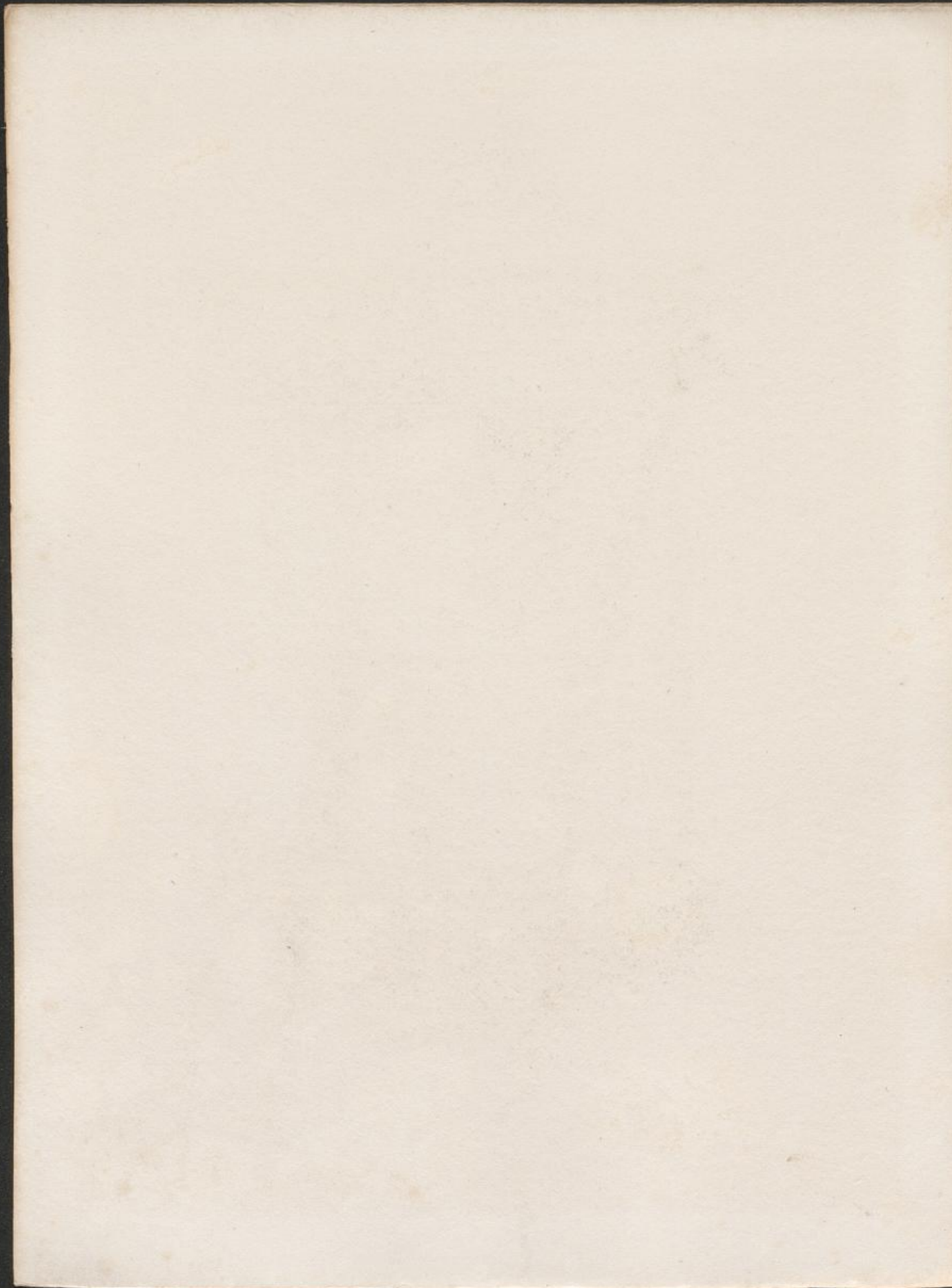


In der Kaiserstrasse N<sup>o</sup> 116.





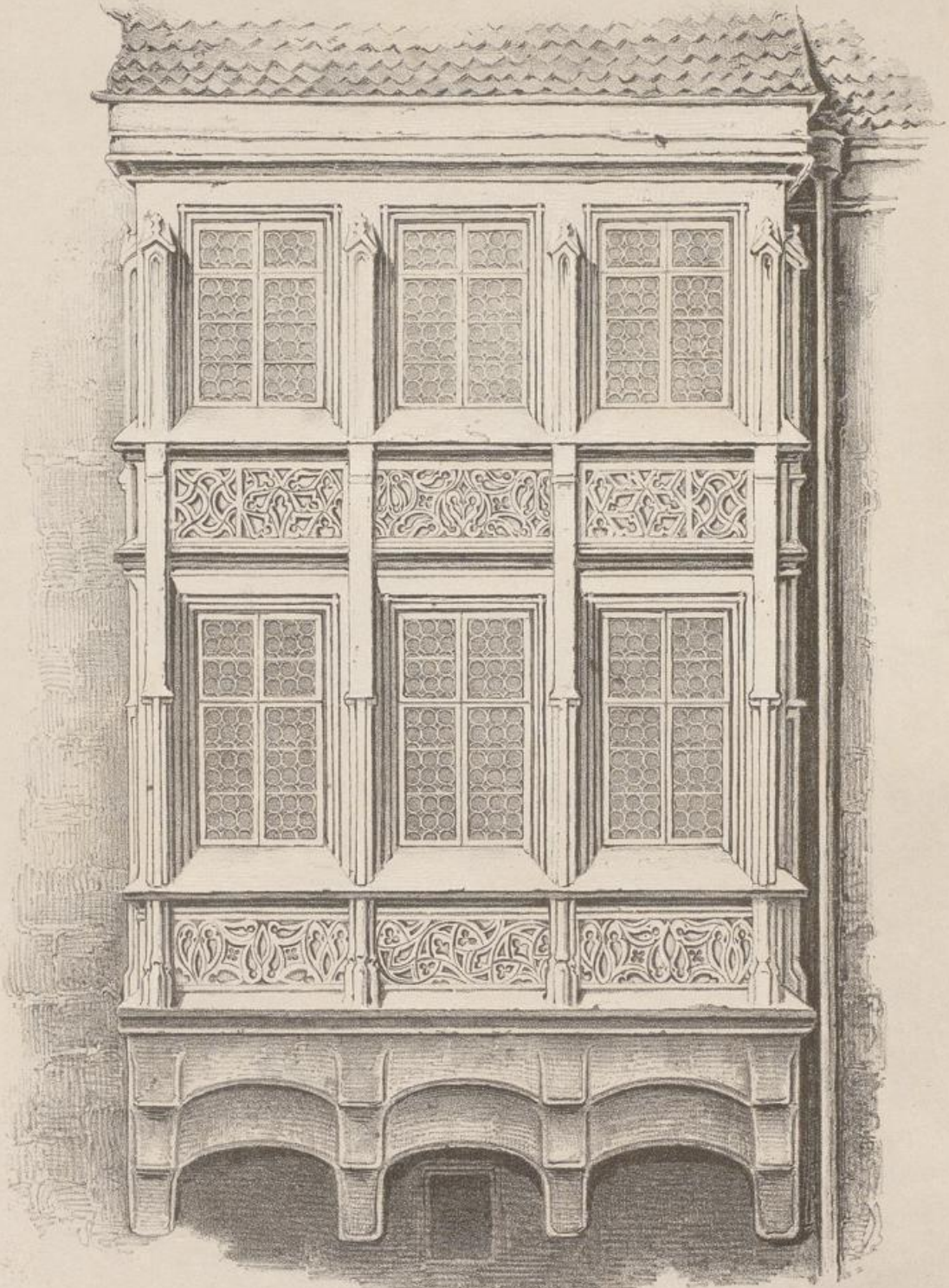
Am Obstmarkt S. 906.



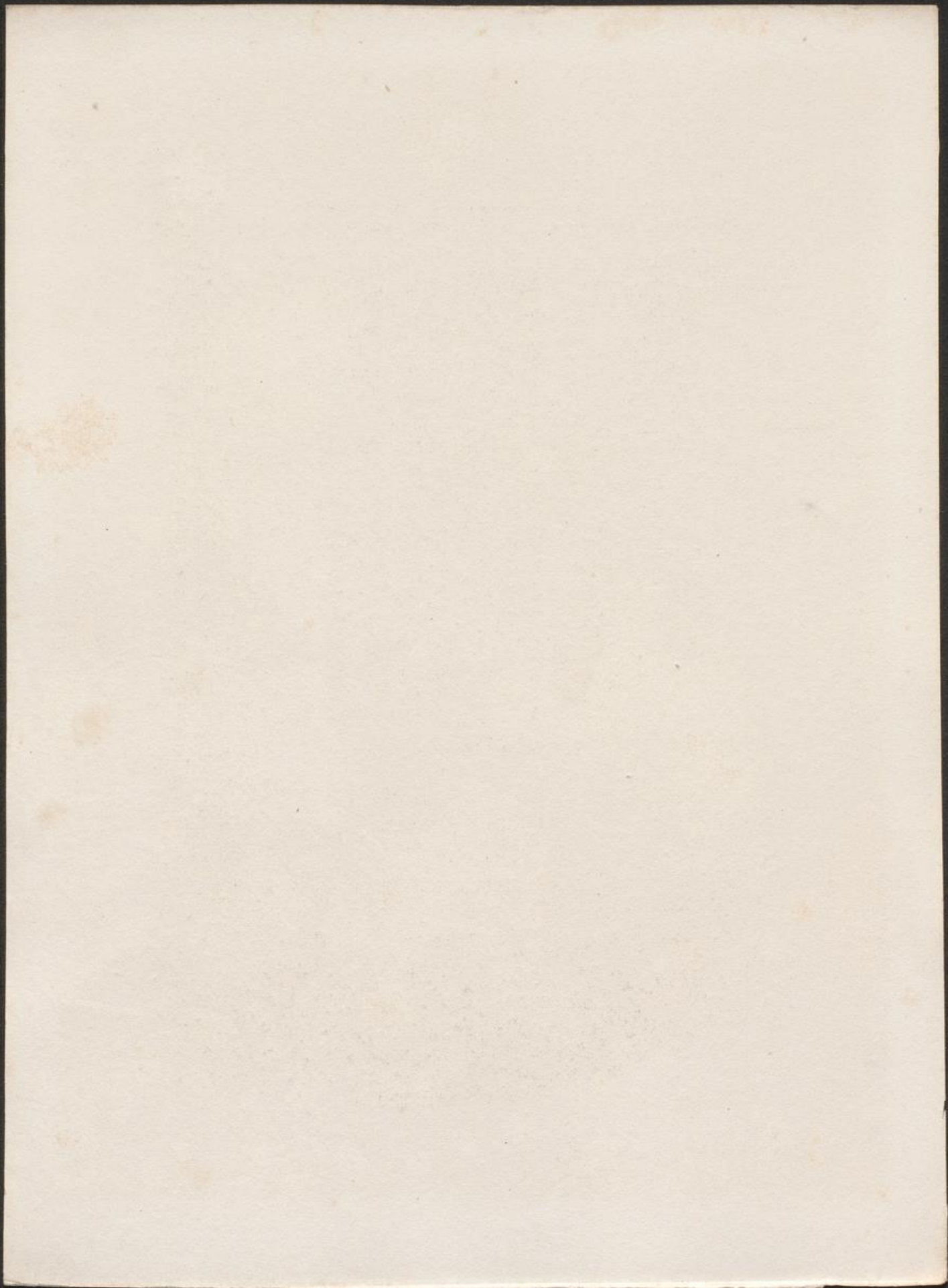


Am Obstmarkt S. 984.





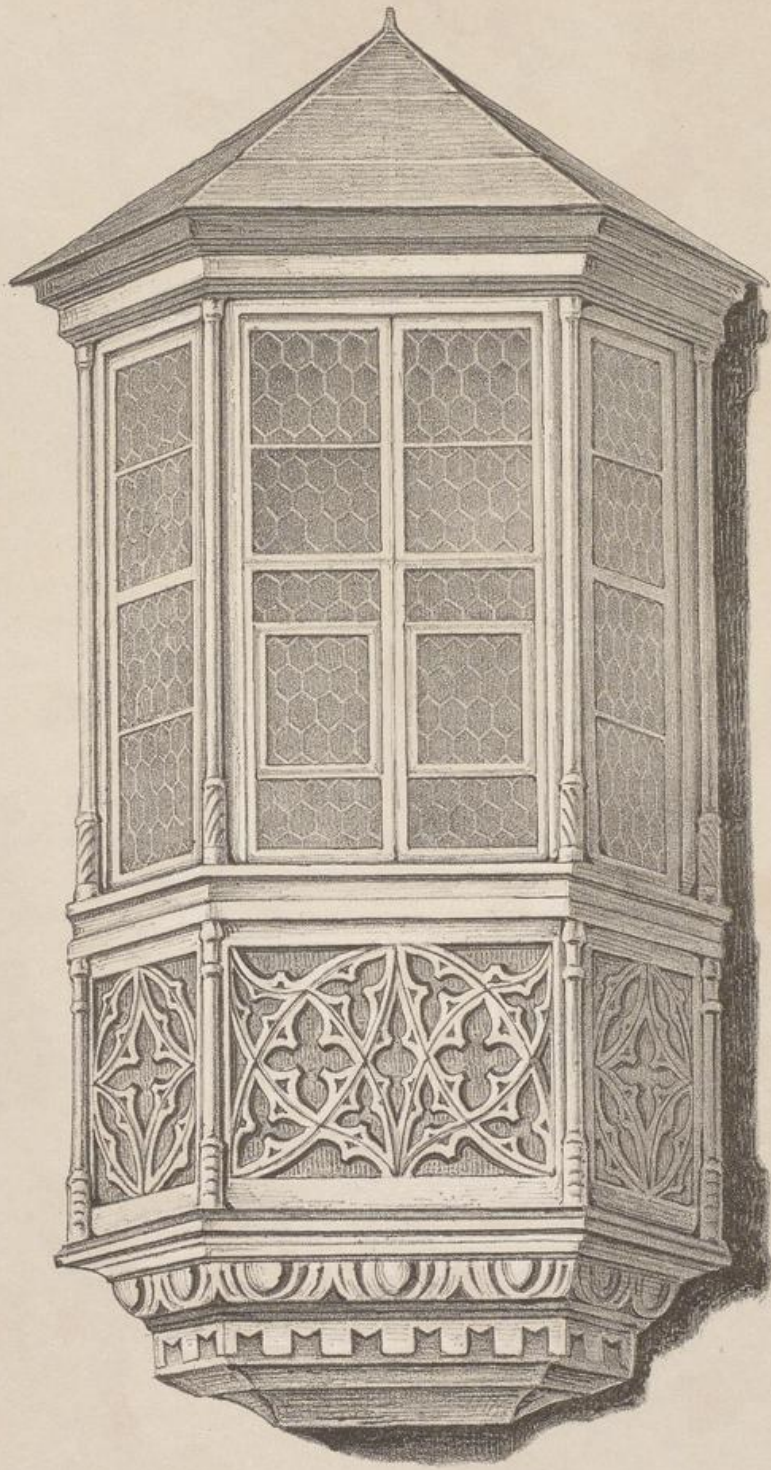
Am Lorenzerplatz.





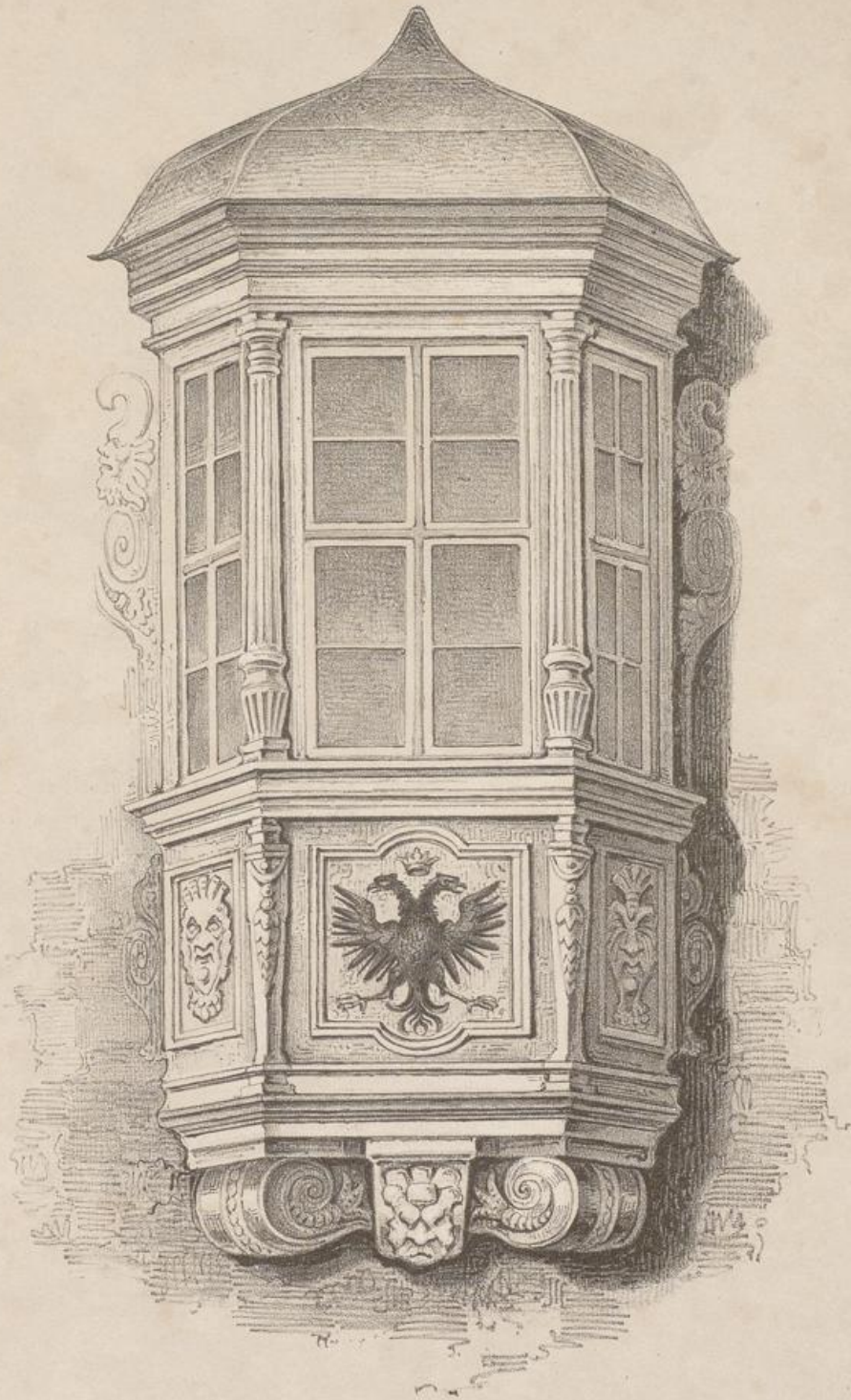
In der Frauenthor - StraÙe.





Am Hauptmarkt N<sup>o</sup>. 13.





Oberwöhrd N<sup>o</sup> 167.

