



UNIVERSITÄTS-  
BIBLIOTHEK  
PADERBORN

**Vorlagen für den gewerblichen Fachunterricht an  
technischen Lehranstalten insbesondere an  
Gewerbeschulen**

**Kircher, Philipp**

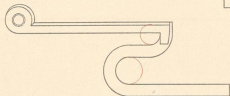
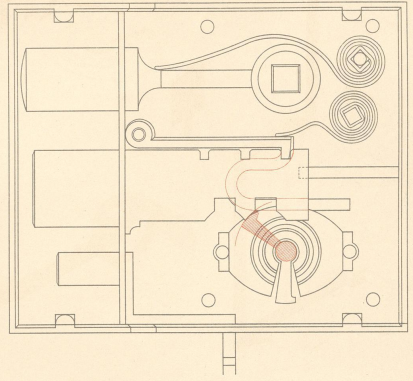
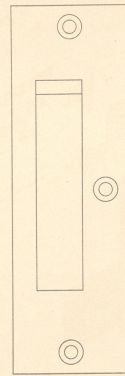
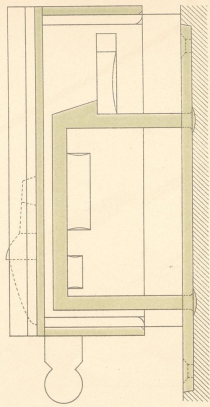
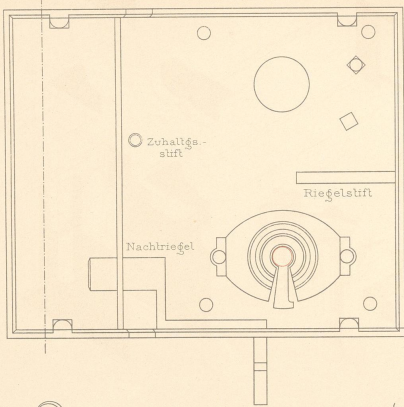
**Karlsruhe, [1886 - 1889]**

3. Zimmerthürschloss.

---

[urn:nbn:de:hbz:466:1-97992](https://nbn-resolving.org/urn:nbn:de:hbz:466:1-97992)

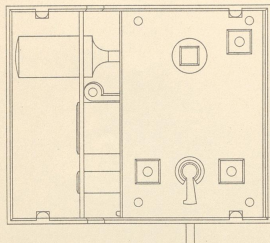




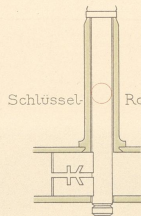
Zuhaltung.



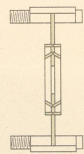
2/3 nat. Gr.



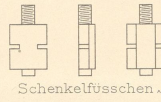
Wohnort und Datum.



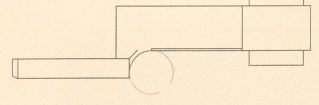
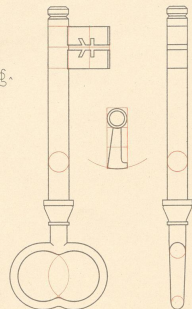
Schlüssel Rohr.



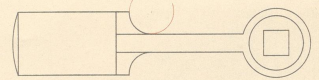
Mittelbruch mit Reifbesatzung.



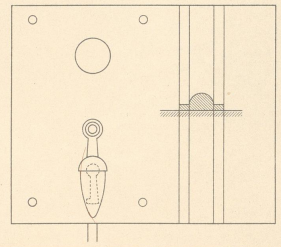
Schenkelfüsschen.



Falle.



2/3 nat. Gr.



Namen.



EK 938  
K 0/1v



06  
1576  
1199