



UNIVERSITÄTS-
BIBLIOTHEK
PADERBORN

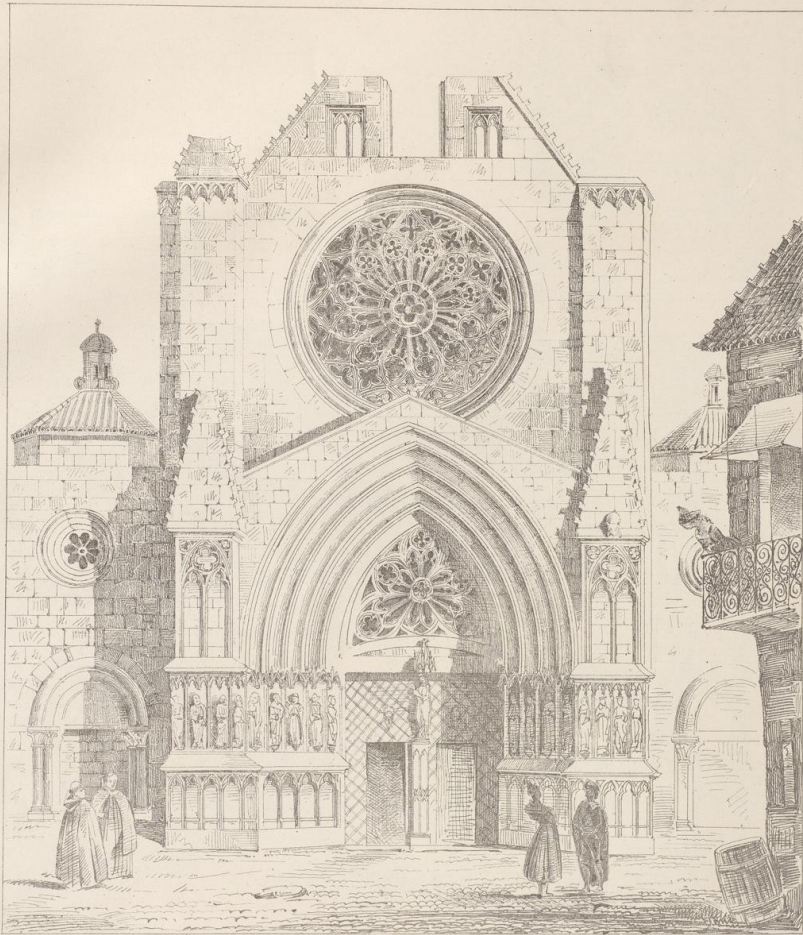
Architectonische Reiseskizzen aus Deutschland, Frankreich und Spanien

Ewerbeck, Franz

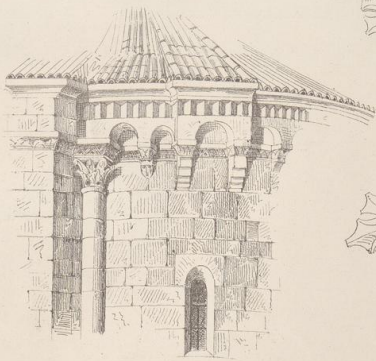
Hannover, 1865

11-13. Kathedrale zu Tarragona nebst Kreuzgang (gotisch, romanisch, maurisch), Details aus dem Kreuzgang zu Barcellona (gotisch).

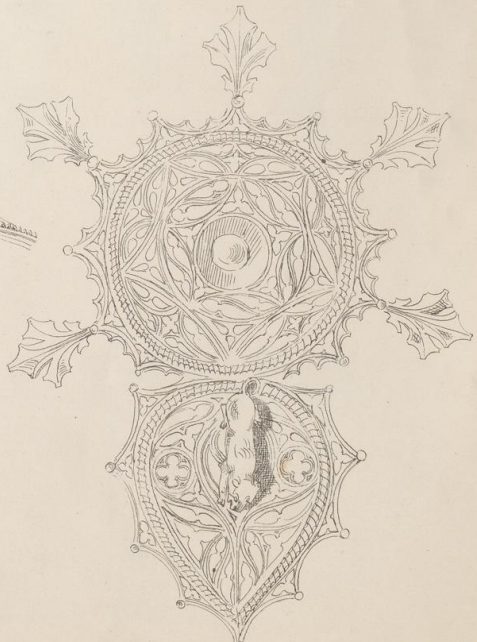
[urn:nbn:de:hbz:466:1-98055](https://nbn-resolving.org/urn:nbn:de:hbz:466:1-98055)

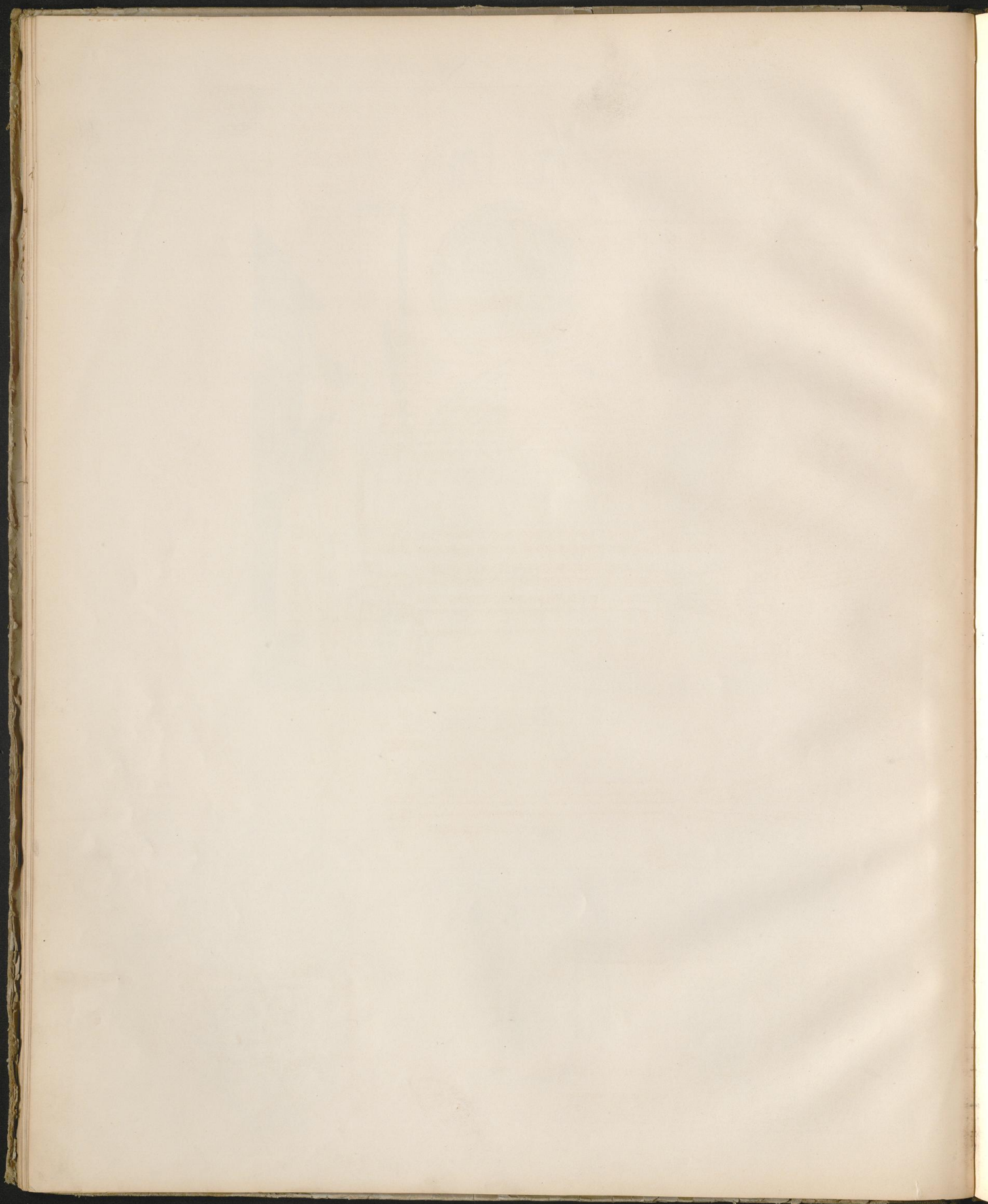


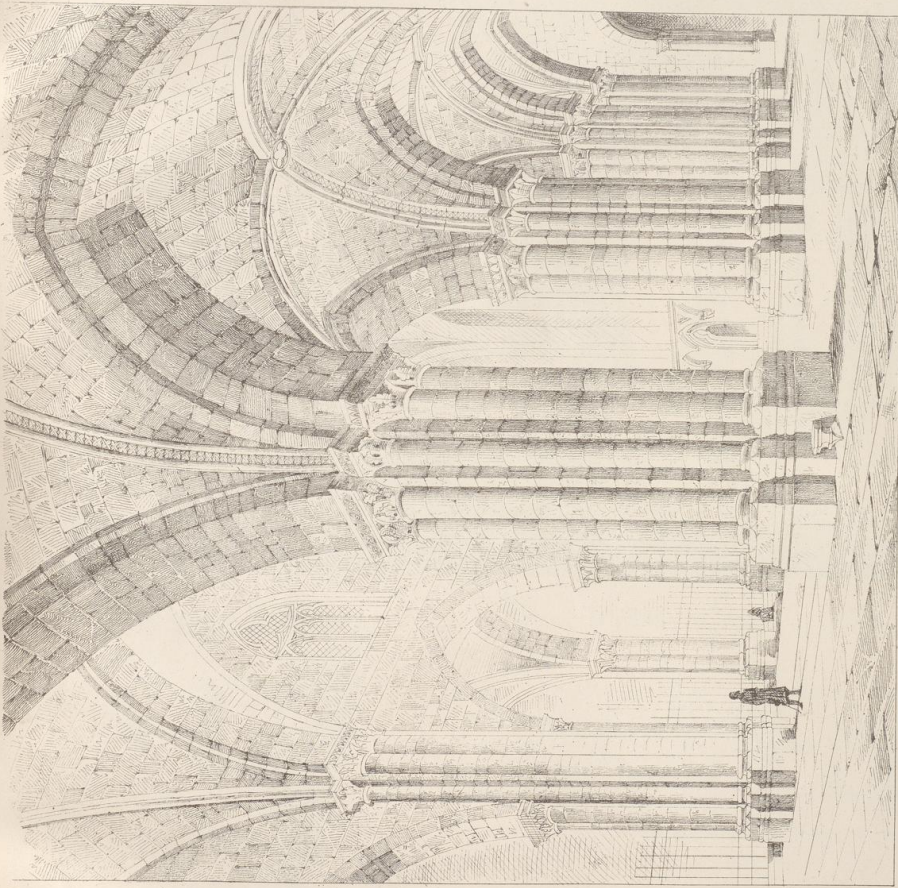
Cathedrale zu Tarragona. Vorder-Ansicht.



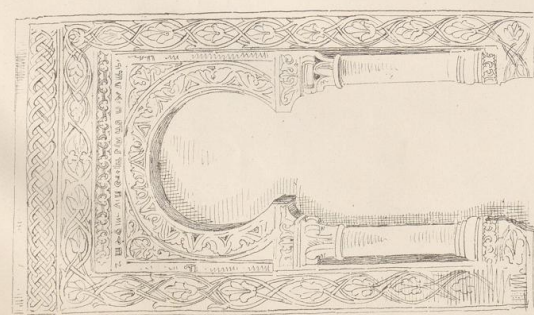
Tarragona. Apsis.



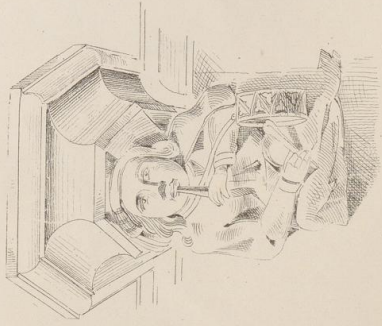




Interior der Kathedrale zu Carrara.

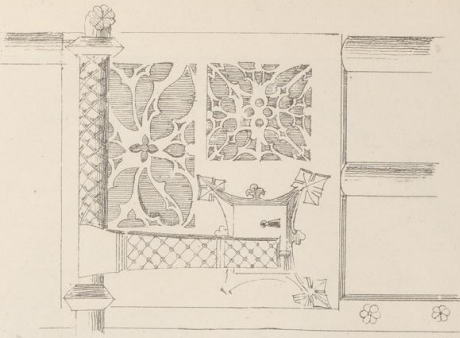
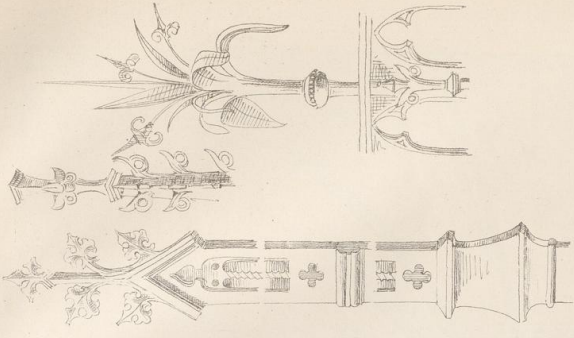


Carische Wandmalerei.



Carrara (Karte)

Ennebach, Neudruck

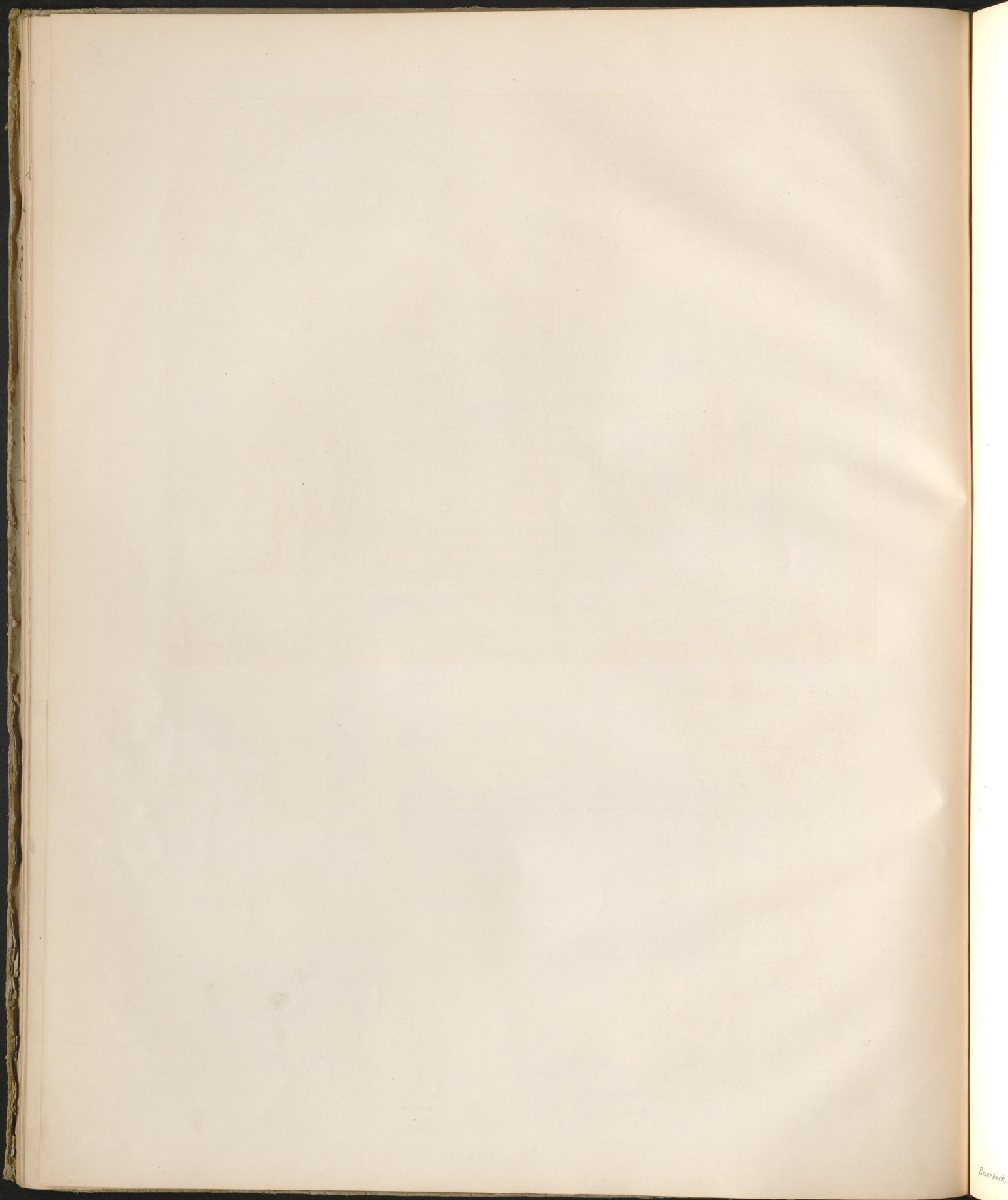


Kathedrale zu Barletta.

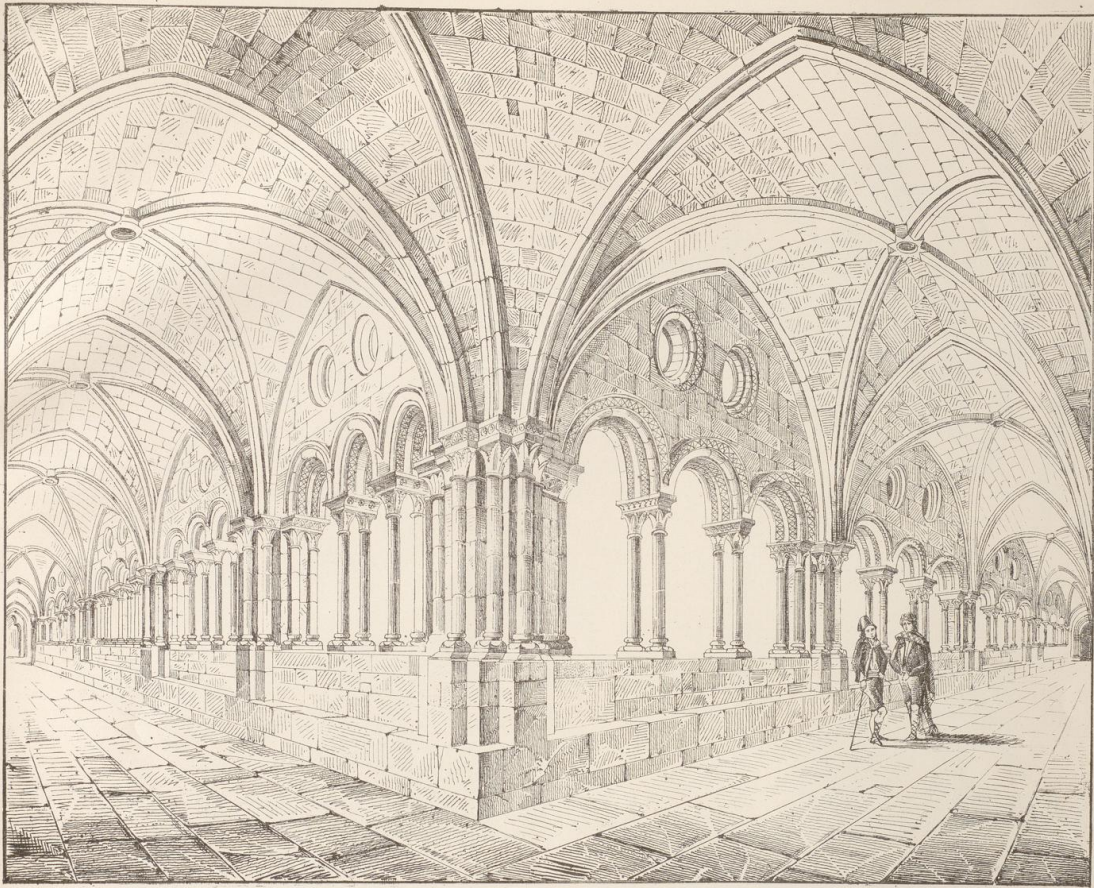
Wied. v. d. G. Schenk



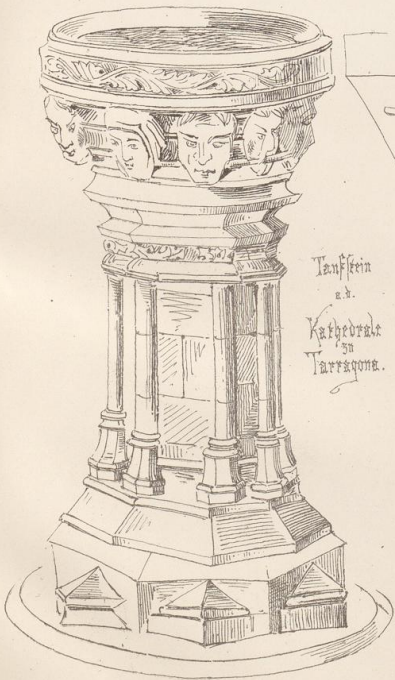
Carrara (Kathedrale)



Übersee,



Kreuzgang der Kathedrale zu Tarragona.



Taufstein
u. d.
Kathedrale
zu
Tarragona.



Fries und Kapitel a. d. Kreuzg. zu Tarragona.

